

16" POWER HEAD

IMPORTANT SAFETY INSTRUCTIONS



READ AND UNDERSTAND ALL INSTRUCTIONS
BEFORE OPERATING OR SERVICING MACHINE
THIS MACHINE IS INTENDED FOR COMMERCIAL USE ONLY



DANGER!

Failure to Observe These Instructions Can Cause Electrical Burn,
Shock or Electrocution To Machine Operator or Bystanders.

- **NEVER** attempt to operate machine unless you have been trained in its operation.
- This PowerHead is designed for **DRY** pickup only. DO NOT use on wet surfaces or for wet pickup. STORE INDOORS.
- **NEVER** operate machine with a cut, abraded or taped cord.
- **NEVER** operate machine with a broken grounding blade on the plug.
- **ALWAYS** replace entire cord when cord or plug is damaged in any manner. See page 2 for Wiring Diagram.
- **NEVER** handle machine, cord or plug with wet hands.
- **NEVER** drop or insert any object into any machine opening.
- **ALWAYS** keep face, fingers, hair or any body part, or loose clothing away from any machine opening or moving part, such as the rotating brush opening.
- **NEVER** attempt to service or perform maintenance functions while machine is plugged into electrical outlet.
- **NEVER** leave machine unattended when plugged in. Unplug machine from electrical outlet when not in use.
- **ALWAYS** turn machine off before unplugging from electrical outlet.
- **NEVER** operate machine in the presence of flammable or combustible liquid or fumes.

WARNING!

Failure to Observe These Instructions Can Machine Damage and
Possible Injury To Machine Operator or Bystanders.

When any electrical motor, switch, cord or plug service is required, maintenance should only be done by an authorized service station, an electrician or other qualified persons.

Never operate machine if it is not working properly, if it has been dropped, damaged, exposed to weather, or dropped into water. Return machine to service center for examination and repair.

Never operate machine with any air opening blocked. Keep all air openings free of dust, lint, hair and the like.

Do not operate vacuum source without dustbag and/or filters in place.

Always store machine indoors. Protect from rain or snow. Never spray top of machine with liquids.

Do not pull or carry machine by electrical supply cord, use cord as a handle, close door on cord, pull cord around sharp edges or corners or expose to heated surfaces.

Never disconnect plug by pulling on cord. To disconnect from outlet grasp the plug, not the cord.

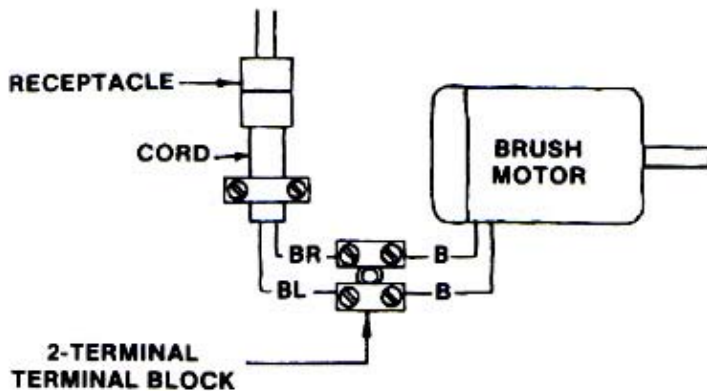
Always unplug vacuum source before connecting or disconnecting this motorized brush attachment.

Never run this motorized brush attachment over power cord.



READ ALL INSTRUCTIONS AND FOLLOW ALL ILLUSTRATIONS CAREFULLY

WIRING DIAGRAM 16" POWER HEAD



Refer to the Operating Manual of your vacuum cleaner for additional safety precautions.

Included will be instructions on cord and plug safety procedures, wiring diagrams including grounding procedures and routine maintenance requirements.

WARNING!

When any electrical motor, switch, cord or plug service is required, maintenance should only be done by an authorized service station, an electrician or other qualified persons.

16" Power Head Assembly and Operation Instructions

ASSEMBLY

Your NSS 16" Power Head is assembled for operation except for installation of the tube handle and attachment of a vacuum hose.

Hose

The hose is attached to the tube handle by means of the plastic hose coupling.

Tube Handle

The steel tube handle is a one-piece design.

To install on Power Head: 1) Slide large plastic ring #27 and small fixing ring #28 onto straight end of tube handle. 2) Push end of tube handle into swivel joint #29. 3) Slide both rings down tube handle and tighten threads onto swivel joint.

Cord

Attach cord to the tube handle and the hose with the rubber straps provided in the box. Wrap cord loosely around hose to adjust the cord length.

OPERATION

Ensure switch of the vacuum source is in the OFF position. Attach cord of the Power Head to electric outlet of vacuum source, making sure current is the same as that which machine is designed to operate on. Turn ON vacuum source to start cleaning.

General Floor Cleaning

Make strokes at a leisurely pace and at a length that feels the most natural. *Always work away from the machine, pulling machine behind you.*

DANGER! This Power Head is designed for **DRY PICKUP ONLY!** Failure to observe this warning can cause electrical burn, shock or electrocution to machine operator or bystanders.

16" Power Head Maintenance Instructions

WARNING! DO NOT ATTEMPT MAINTENANCE OR REPAIRS BEFORE DISCONNECTING CORD FROM ELECTRICAL POWER SOURCE.

MAINTENANCE

Lubrication—The motor has sealed bearings which require no further lubrication. Casters and wheels should be oiled as required.

Current—Machine should be run only on voltage specified on name plate.

Hose—should be removed from machine after each use. The tube handle should be removed from hose. It should then be laid in a loose coil or hung over several pegs on the wall to remove the strain on it.

Cord

- Unplug powerhead from the vacuum source.
- With Phillips head screwdriver, remove 4 screws holding #25 bottom plastic cover into position.
- Remove two screws holding strain relief into position with small flat blade screwdriver with blade about 1/8" wide.
- Remove 2-wire connections from terminal block. Note color and placement of wires removed for re-installation.
- Re-install strain relief on new cord and insert wires into terminal block and tighten.
- Move strain relief into position and re-assemble clamp onto the strain relief.
- Re-install 4 screws. Do not overtighten screws into brass inserts.
- Plug in brush power lead to vacuum source and test machine.

WHAT TO DO IN CASE OF LOSS OF SUCTION—Ordinarily loss of suction is caused by a simply created cause. The following suggestions are listed as a guide.

- Check tool, hose, and tube handle for plugging. If plugged, unplug.
- Remove hose from machine and check suction at intake. If still suction loss;
- Check all gaskets to see if making proper seal. If worn, replace.
- Check filter bag of vacuum source for clogging. If dirty, clean.

After 500 hours of running time, check vacuum motor carbon brush wear. When carbon brushes and copper on commutator are worn, return to authorized NSS service station for repair.

Belt & Brush

- Unplug powerhead from the vacuum source.
- With Phillips head screwdriver, remove 4 screws holding #25 bottom plastic cover into position.
- Pull out brush on the opposite end of belt until brush, bearing, and bearing block are removed from brush housing. Pull brush and remaining bearing until brush pulls free from machine. Remove strings and hair from brush and bearing shaft. Replace brush and bearings if necessary, see brush wear (e).
- Remove old belt and install new belt (or new brush /bearings) over brush motor shaft. Pull belt side bearing block and bearing on brush shaft making sure that bearing blocks are pointed in the right direction.

(Bearing blocks are marked on the side with 1 or 2.) #2 set down with head in opening position is the lowest extension of bristles. #1 set down extends the bristle an additional 1/16". (Make sure both are the same position.)

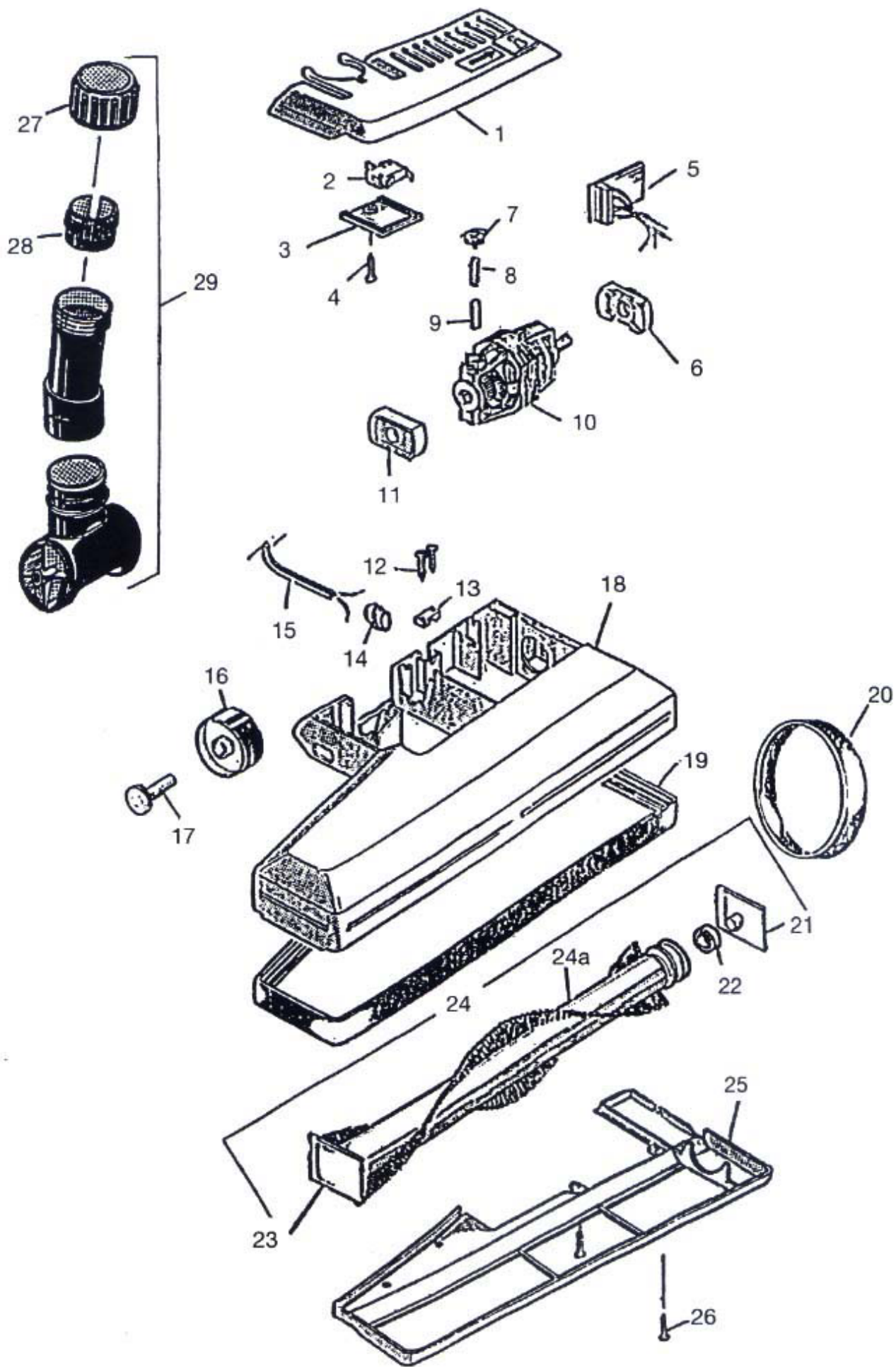
- Brush Wear:** If brush bristle fails to agitate carpet because of bristle wear, follow steps a thru e. Turn bearing blocks with #2 at the up position when brush head is in opening position.
- Run belt around pulley on brush, stretch belt and insert brush bearing into bearing block, belt side.
- Line up bearing block and bearing on shaft on opposite end of belt. Push both sides down into brush housing making sure that bearing blocks are all the way into position. Turn brush a few times to make sure that belt is running free.
- Make sure shoe seal is in place. Make sure shoe locks are in place on brush head, otherwise shoe will bow and vacuuming will be uneven.
- Re-install 4 screws. Do not overtighten screws into brass inserts.
- Plug in brush power lead to vacuum source and test machine.

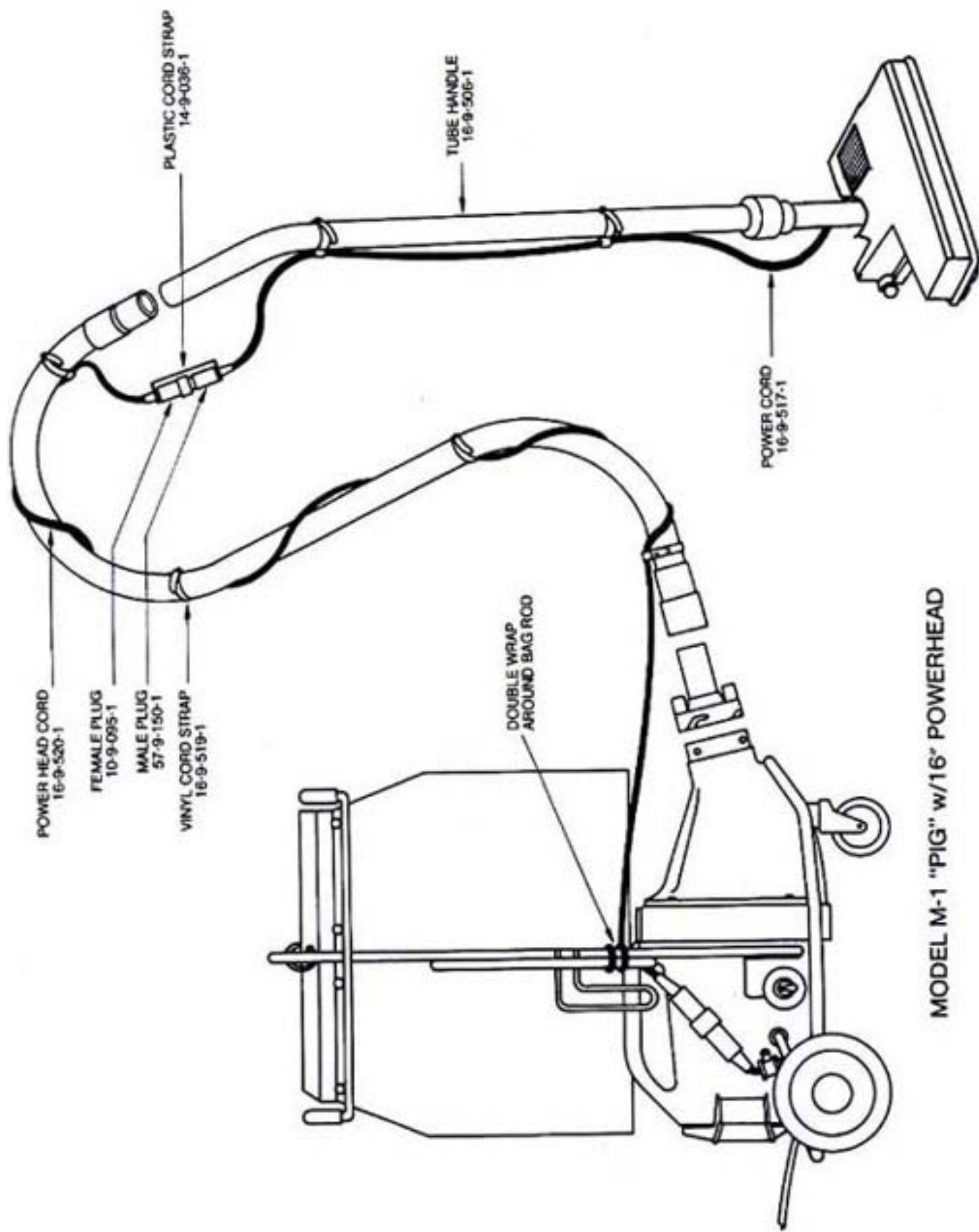
IMPORTANT
SAVE THESE INSTRUCTIONS

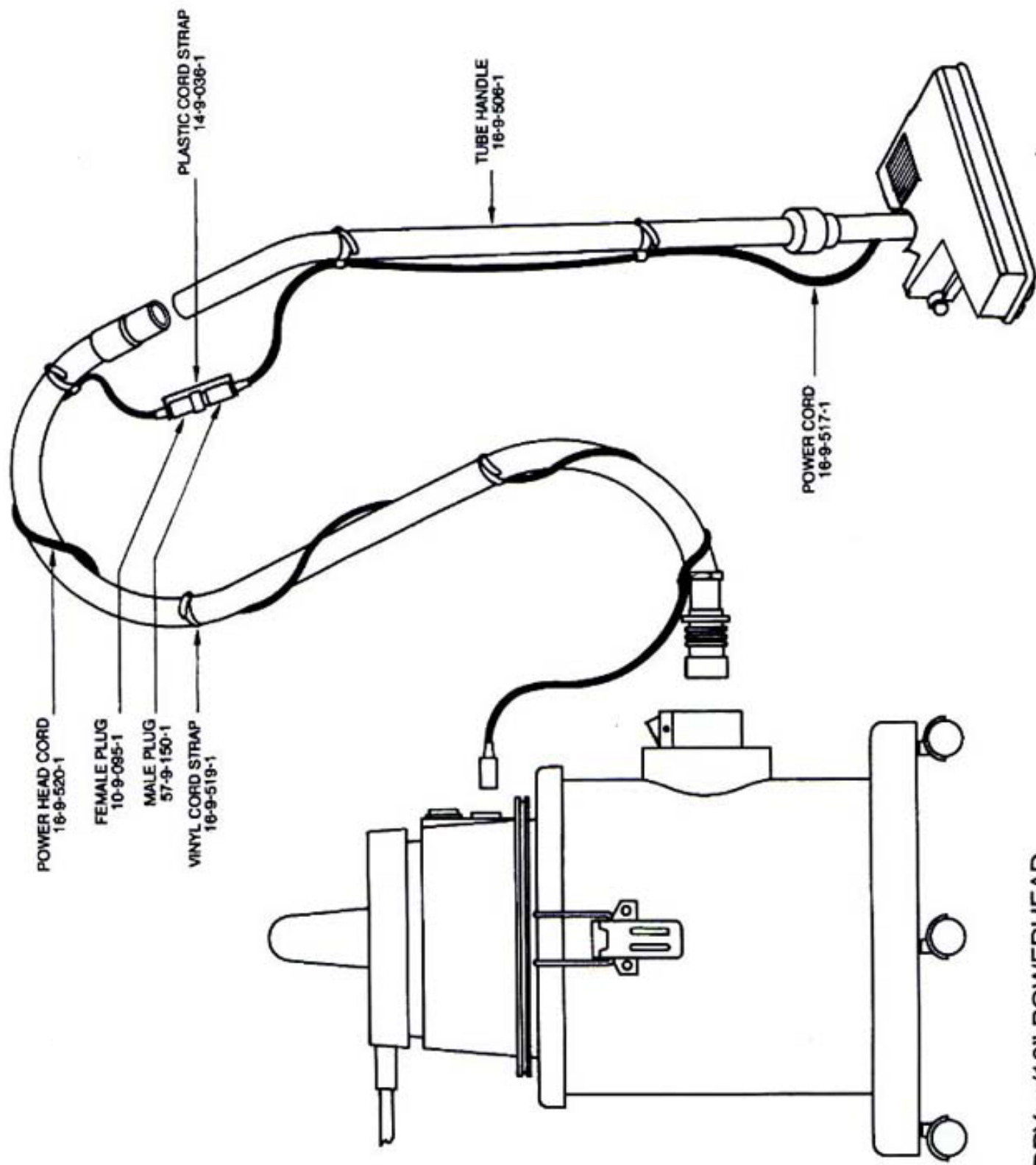
16" POWERWAND 400

Part Number 16-1604 115 Volt

<u>Item No.</u>	<u>Part No.</u>	<u>Description</u>	<u>Qty.</u>
1	16-9-400-1	Top Motor Cover	1
Not Shown	16-9-401-1	8-18 x 1/2 Pan Head Screw	3
Not Shown	16-9-402-1	8-18 x 5/8 Pan Head Screw	1
2	16-9-405-1	Micro Switch	1
3	16-9-404-1	Switch Cover Plate	1
4	16-9-403-1	4-24 x 1 Pan Head Screw	1
5	16-9-406-1	Terminal Block w/Wires	1
6	16-9-412-1	Motor Mount, Pulley End	1
7	16-9-407-1	Cap, Brush Spring	2
8	16-9-408-1	Carbon Brush Spring	2
9	16-9-409-1	Carbon Brush	2
10	16-9-410-1	Brush Drive Motor - 115 Volt	1
11	16-9-413-1	Motor Mount, Opposite Pulley	1
12	16-9-416-1	6-20 x 3/4 Pan Head Screw	2
13	16-9-415-1	Cord Clamp	1
14	16-9-414-1	Strain Relief	1
15	16-9-517-1	4.5 Ft. (1.4m) Cord for Powerhead	1
Not Shown	16-9-520-1	18 Ft. (5.5m) Cord, Handle To Vac	1
16	16-9-427-1	Wheel Only	2
--	16-9-434-1	Wheel w/Wheel Pin	2
17	16-9-426-1	Wheel Pin Only	2
18	16-9-417-1	Brush Cover Mount	1
19	16-9-418-1	Bumper	1
20	16-9-423-1	Brush Drive Belt	1
21	16-9-421-1	Bearing Mount Plate, Pulley End	1
--	16-9-431-1	Bearing Mount Plate w/Bearing	1
22	16-9-420-1	Brush Bearing	2
23	16-9-422-1	Bearing Mount Plate, Opp. Pulley	1
--	16-9-432-1	Bearing Mount Plate w/Bearing	1
24	16-9-433-1	Brush Assembly, includes #21-#23	1
--	16-9-419-1	Brush Only	1
25	16-9-424-1	Bottom Shoe Plate	1
26	16-9-425-1	8-18 x 5/8 Flat Head Screw	4
27	16-9-525-1	Threaded Collar	1
28	16-9-526-1	Split Friction Ring	1
29	16-9-435-1	Swivel Joint Complete	1







DESIGNER DRY w/16" POWERHEAD



THE NATIONAL SUPER SERVICE COMPANY

3115 FRENCHMENS ROAD, TOLEDO, OHIO 43607-2958

PHONE (419) 531-2121 • FAX (419) 531-3761

16" Power Head Orig. 10/97 9091606