

**Spare parts list**  
**(5.970-849.0) Spare parts list Radius 30**

The logo for Monster Janitorial, featuring a stylized 'M' with a red and blue gradient and a blue swoosh, followed by the word 'MONSTER' in blue and 'JANITORIAL' in red.  
**CLICK TO ORDER PARTS**

## DE HINWEISE

### Weitere Sprachen:

Diese Ersatzteilliste ist in weiteren Sprachen erhältlich. Sie erhalten diese unter [www.kaercher.com](http://www.kaercher.com) im Bereich Service.  
Die Schreibweise der Teilenummer, z.B. 75456380, entspricht der Teilenummer 7.545-638.0.

### Mengenangaben:

Die Mengenangaben in der Ersatzteilliste entsprechen den in der Baugruppe verbauten Stückzahlen der Bauteile.

### Meterware:

Ersatzteile welche als Meterware geliefert werden sind auf Einbaulänge selbst zu kürzen. Die Stückzahlen sind als Mindestbestellmenge =1m angegeben und müssen je nach Bedarf auf weitere volle Meterzahlen erhöht werden.

### Versionen/ Werknummern:

Sind Versionen oder Werknummern in der Ersatzteilliste angegeben, ist anhand dieser vor Bestellung zu prüfen, welches Bauteil für ihr Gerät verwendet werden muss.

### Lackierte Teile:

Bei Bestellungen von lackierten Teilen welche in der Ersatzteilliste nicht in verschiedenen Farben ausgewiesen sind, ist zusätzlich die Farbnummer oder Farbe mit anzugeben.

### Technische Änderungen:

Technische Änderungen sowie das Recht der ausschließlichen Auswertung unseres geistigen Eigentums behalten wir uns vor.

## EN INSTRUCTIONS

### Other languages:

This list of spare parts is also available in other languages. You can get this list from [www.kaercher.com](http://www.kaercher.com) in the Service division.  
The designation of the part number e.g. 75456380 is equal to 7.545-638.0.

### Quantity details:

The quantity details in the spare parts list correspond to the number of pieces of the component installed in the assembly group.

### Piece goods:

Spare parts that are sold as piece goods are to be cut to the desired length. The quantities have been indicated as minimum order quantity =1m and must be rounded off to the full meter figure depending on your requirements.

### Version/ Plant numbers:

If version or plant numbers are mentioned in the spare parts list, then use the same to check before ordering which spare part needs to be used for your appliance.

### Painted parts:

While ordering painted parts that are not mentioned in the spare parts list in their colour variations, please mention the colour number or the colour you require.

### Technical changes:

We reserve the right to make technical changes as well as the right to exclusive use of our intellectual property.

## FR REMARQUES

### Autres langues:

Cette liste de pièces de rechange est disponible en autres langues. Cela est disponible sous [www.kaercher.com](http://www.kaercher.com) dans le menu Service.  
La désignation du numéro de pièce, par ex. 75456380, correspond au numéro de pièce 7.545-638.0.

### Indications de quantité:

Les indications de quantité dans la liste de pièces de rechange correspondre aux nombres de pièces des composant utilisées dans la construction.

### Matériel au mètre:

Les pièces de rechange qui sont livrées au mètre doivent être raccourcies à longueur souhaitée par l'acheteur même. Les nombres des pièces sont indiquées en quantité de commande minimale = 1m et doivent être augmentés selon le besoin à une chiffre de mètre complète.

### Versions/ Numéros d'usine:

Lorsqu'il sont indiquées des versions ou des numéros d'usine dans la liste de pièces de rechange, vous devez vérifier que composant doit être utilisé pour votre appareil.

### Pièces laquées:

Pour commander des pièces laquées, où les différentes couleurs ne sont pas indiquées dans la liste des pièces de rechange, vous devez indiquer en plus le numéro de la couleur ou seulement la couleur.

### Modifications techniques:

Nous nous réservons la possibilité des modifications techniques ainsi le droit d'exploitation exclusive de notre propriété intellectuelle.

## IT AVVERTENZE

### Altre lingue:

Il presente elenco di parti di ricambio è disponibile sul nostro sito Web anche in altre lingue: sotto [www.kaercher.com](http://www.kaercher.com) alla voce "Service".

L'indicazione del codice pezzo, ad es. 75456380, corrisponde al codice pezzo 7.545-638.0

### Indicazioni di quantità:

Le indicazioni di quantità riportate dall'elenco "parti di ricambio" corrispondono al numero delle singole componenti contenute nella rispettiva unità.

### Merce a metro:

Le parti di ricambio fornite come "merce a metro" devono venire in seguito accorciate alla lunghezza necessaria per il montaggio. La quantità unitaria è indicata come "quantità minima di ordinazione = 1m" e deve all'occorrenza venire moltiplicata per il numero intero di metri necessari.

### Versioni / Numeri di fabbricazione:

Quando l'elenco "parti di ricambio" riporta diverse versioni o numeri di fabbricazione, confrontare la versione o il numero di fabbricazione del ricambio desiderato con quelle/i presenti nell'elenco e indicarla/o al momento dell'ordinazione.

### Parti di ricambio verniciate:

Nel caso di ricambi verniciati, se l'elenco parti di ricambio non ne riporta espressamente i diversi colori, al momento dell'ordinazione è necessario indicare anche il colore o il numero del colore desiderato.

### Modifiche tecniche:

Ci riserviamo il diritto di apportare modifiche tecniche così come il diritto di utilizzo esclusivo della nostra proprietà intellettuale.

## ES INDICACIONES

### Otros idiomas:

La lista de piezas de repuesto se puede adquirir en otros idiomas. La puede adquirir en [www.kaercher.com](http://www.kaercher.com) en el área de servicios.

La notación de los números de las piezas, p.ej. 75456380 corresponde al número de pieza 7.545-638.0.

### Cantidades:

Las indicaciones de cantidades de la lista de piezas de repuesto corresponden al número de piezas montadas en el componente.

### Mercancía por metros:

Las piezas de repuesto que se suministran por metros se pueden cortar al largo deseado. La unidad mínima de pedido es de = 1 m y el número de metros completos se puede aumentar según necesidad.

### Versiones/números de fábrica:

Si se indica la versión o número de fábrica en la lista de piezas de repuesto, se debe comprobar en ella la pieza a usar para su aparato antes de realizar el pedido.

### Piezas lacadas:

Al realizar pedidos de piezas lacadas que no estén indicadas en los diferentes colores en la lista de piezas de repuesto, se debe indicar también la referencia del color o el color.

### Modificaciones técnicas:

Reservados los derechos de realizar modificaciones técnicas y aprovechar nuestra propiedad intelectual.

## PL WSKAZÓWKI

### Pozostałe języki:

Ta lista części zamiennych jest dostępna w także w innych językach. Mogą ją Państwo pobrać ze strony [www.kaercher.com](http://www.kaercher.com) w dziale Serwis.

Sposób zapisywania numeru części, np. 75456380, odpowiada numerowi części 7.545-638.0.

### Dane ilości:

Dane ilości podane w liście części zamiennych odpowiadają liczbie sztuk podzespołów tworzących dany moduł.

### Towar sprzedawany na metry:

Części zamienne dostarczane jako towar sprzedawany na metry po zamontowaniu należy samodzielnie skrócić do potrzebnej długości. Liczba sztuk podana jest jako minimalna ilość zamówienia = 1m i w zależności od potrzeb zwiększa się ją o kolejne pełne metry.

### Wersje/ Numer zakładu:

Jeżeli w liście części zamiennych podane są wersje lub numery zakładu, przed zamówieniem na ich podstawie należy sprawdzić, który podzespół stosuje się w Państwa urządzeniu.

### Części lakierowane:

W przypadku zamówień części lakierowanych, które w liście części zamiennych nie podano w wielu kolorach, należy dodatkowo zaznaczyć nr koloru lub kolor.

### Zmiany techniczne:

Zastrzegamy sobie prawo do zmian technicznych oraz wyłącznego wykorzystywania naszej własności intelektualnej.

## **RU УКАЗАНИЯ:**

### **Другие языки:**

Данный список запасных частей также доступен на других языках. Вы найдете его на сайте [www.kaercher.com](http://www.kaercher.com) в разделе Service  
Маркировка номера детали, например, 75456380, соответствует номеру детали 7.545-638.0.

### **Указание количества:**

Количественные данные в списке запасных частей соответствуют числу компонентов, входящих в состав узлов.

### **Товар, продаваемый на метры:**

Запасные части, продающиеся на метры, необходимо обрезать до нужной длины. Число изделий указано в виде минимального объема заказа = 1м и их количество можно округлить до требуемого по мере необходимости.

### **Варианты исполнения/заводские номера:**

Если варианты исполнения или заводские номера указаны в списке запасных частей, то перед заказом необходимо проверить, какая деталь подходит для вашего устройства.

### **Лакированные детали:**

При заказе лакированных деталей, варианты расцветки которых не указаны в списке запасных частей, необходимо дополнительно указать номер цвета или необходимый для вас цвет.

### **Технические изменения:**

Мы оставляем за собой право на технические изменения, а также право на исключительное использование нашей интеллектуальной собственности.

## Table of contents

---

<b>Spare parts list Radius 30 (5.970-849.0)</b> .....	<b>6</b>
10 Basic machinery (0.208-752.0).....	7
20 Sweep tank (0.208-758.0) .....	10
30 Sweep roller chest (0.208-762.0).....	12
40 Transmission completely (0.208-763.0).....	15
50 Battery transmission (0.208-854.0) .....	18
60 Side broom (0.208-765.0).....	20
70 Filter box (0.208-766.0) .....	23
80 Operating unit battery (0.208-855.0) .....	25
90 ABS carpet sweep unit (0.208-857.0).....	27
100 Battery (0.209-010.0) .....	29
110 Add-on kit filter vibrator (0.209-501.0) .....	31

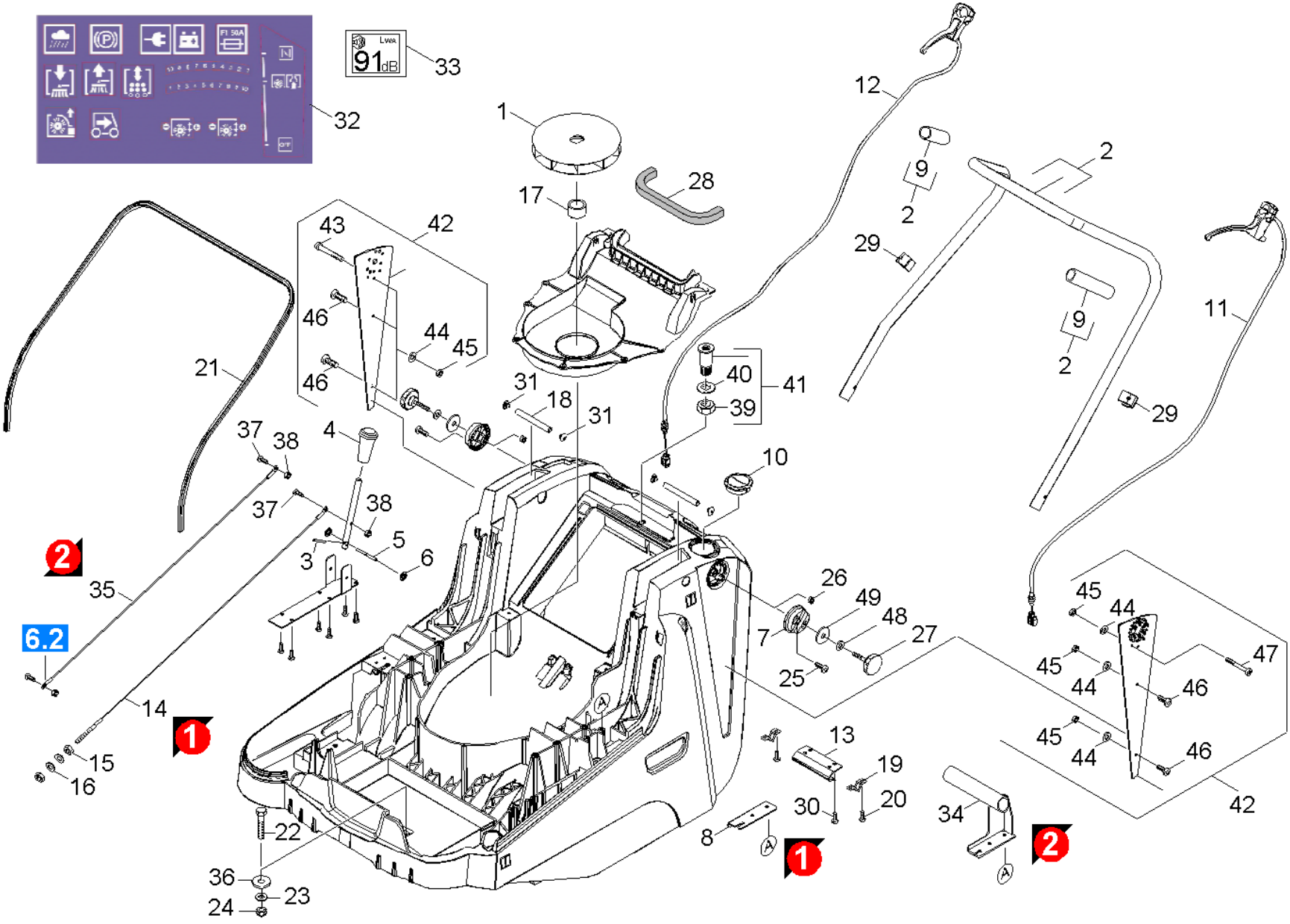
**Spare parts list Radius 30 (5.970-849.0)**

---

Pos	Material #	Name
10	0.208-752.0	Basic machinery
20	0.208-758.0	Sweep tank
30	0.208-762.0	Sweep roller chest
40	0.208-763.0	Transmission completely
50	0.208-854.0	Battery transmission
60	0.208-765.0	Side broom
70	0.208-766.0	Filter box
80	0.208-855.0	Operating unit battery
90	0.208-857.0	ABS carpet sweep unit
100	0.209-010.0	Battery
110	0.209-501.0	Add-on kit filter vibrator

---

10 Basic machinery (0.208-752.0)

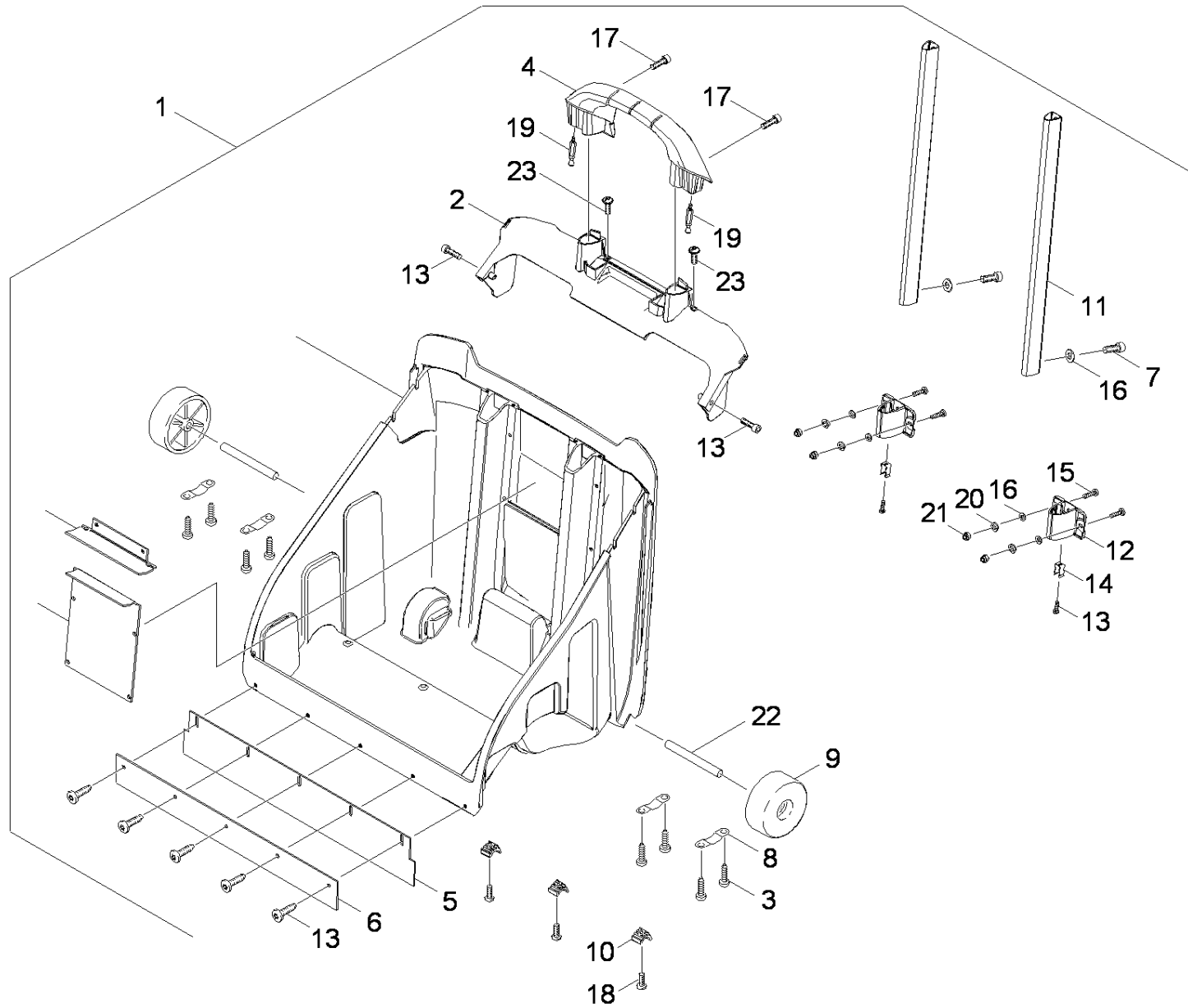


**10 Basic machinery (0.208-752.0)**

ET/VT (spare/wear parts)	Pos	Material #	Name	Qty.	Unit	var. information
	1	5.600-086.0	Blower wheel	1.000	ST	
	2	5.034-797.0	Shearing shackle	1.000	ST	
	3	7.314-953.0	Spring pin 2,5x12-St ISO 8752	1.000	ST	
	4	5.321-606.0	Hand grip	1.000	ST	
	5	5.317-221.0	Bolt adjustment side broom	1.000	ST	
X-X	6	6.343-119.0	Lock washer	2.000	ST	
X	7	5.093-324.0	Fixing retaining bracket	2.000	ST	
	8	5.009-337.0	Plate bowden wire gear	1.000	ST	Version 1
	9	6.390-269.0	Hose	1.000	M	
	10	6.415-896.0	Air flap	1.000	ST	
X-X	11	6.431-258.0	Bowden wire gear	1.000	ST	
X-X	12	6.431-257.0	Bowden wire bulk waste flap	1.000	ST	
	13	5.009-485.0	Plate frame retainer	1.000	ST	
	14	6.431-259.0	Tackle	1.000	ST	Version 1
X-X	15	7.311-004.0	Hexagon nut M8 -8-A3E ISO 4032	2.000	ST	
	16	7.311-003.0	Hexagon nut M6 -8-A2E ISO 4032	2.000	ST	
	17	5.116-337.0	Sleeve blower wheel	1.000	ST	
	18	5.116-319.0	Sleeve cover	2.000	ST	
X-X	19	6.330-149.0	Spring	2.000	ST	
	20	7.303-106.0	Screw 4x12 -10.9-R2R (IN6RD)	4.000	ST	
X-X	21	6.365-511.0	Sealing profile	1.000	M	
	22	7.304-461.0	Hexagonal head screw M 8x50-8.8-A2E IS	4.000	ST	
	23	7.313-004.0	Spring washer B 8-FSt-A3E DIN 127	4.000	ST	
	24	6.310-150.0	Hexagon nut self-locking M8	4.000	ST	
X-X	25	7.303-108.0	Screw 5x20 -10.9-R2R (In6Rd)	4.000	ST	

**10 Basic machinery (0.208-752.0)**

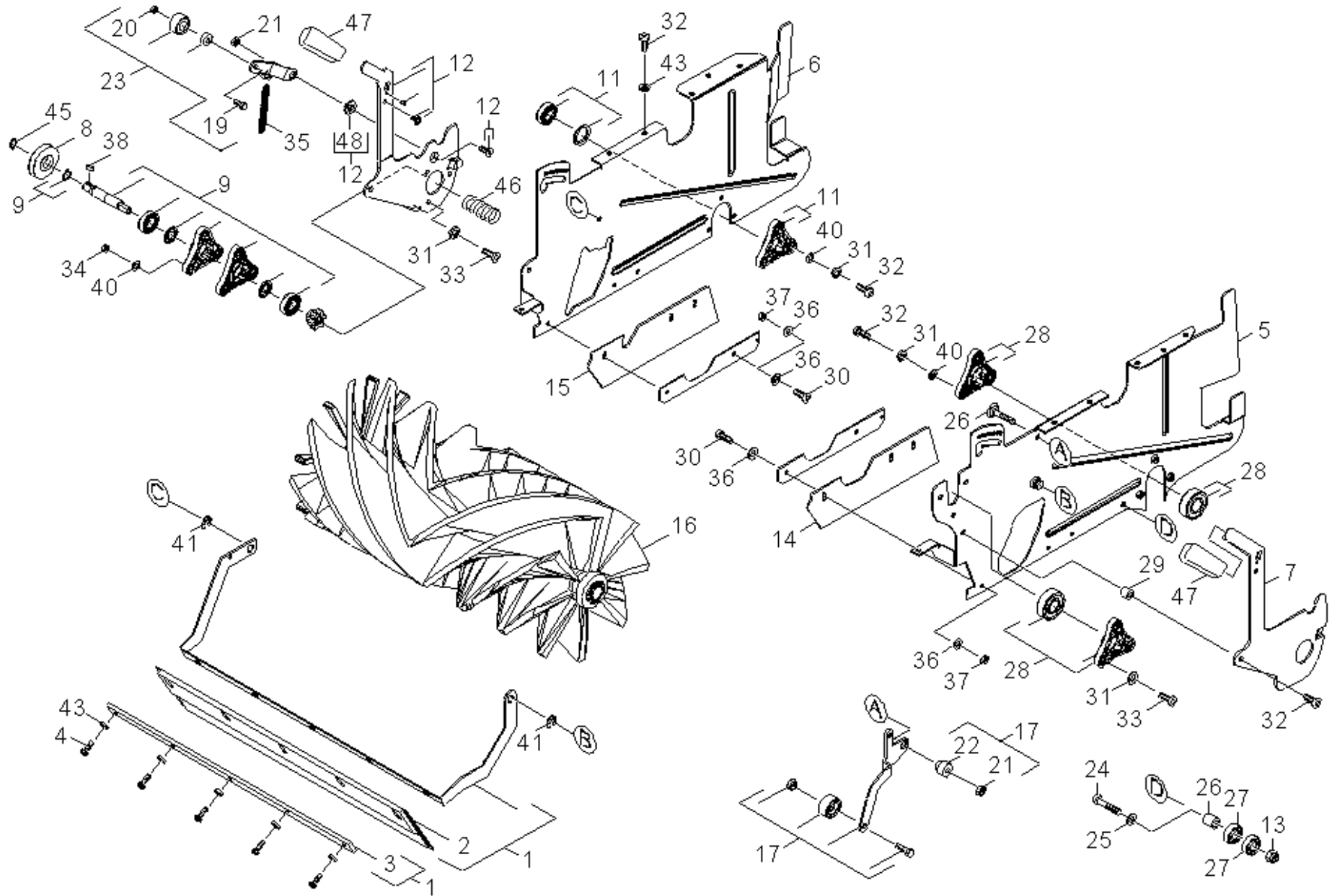
ET/VT (spare/wear parts)	Pos	Material #	Name	Qty.	Unit	var. information
X-X	26	7.311-570.0	Square nut M8 -05-A2E DIN 557	2.000	ST	
X-X	27	6.321-179.0	Star grip	2.000	ST	
	28	6.273-271.0	Cellular rubber profile	1.000	M	
	29	5.839-408.0	Cable clip	2.000	ST	
X-X	30	7.303-112.0	Screw 6x20 -10.9-R2R (In6Rd)	21.000	ST	
X	31	6.385-935.0	Plug	4.000	ST	
	32	5.392-928.0	Adhesive label safety instructions KM 75	1.000	ST	
	33	5.387-361.0	Label 91DB	1.000	ST	
	34	4.040-749.0	Exhaust complete	1.000	ST	Version 2
X-X	35	6.431-282.0	Tackle side broom	1.000	ST	Version 2
	36	7.312-277.0	Washer 8-200HV-A2E ISO7093-1	4.000	ST	
	37	7.306-078.0	Screw M5x20 -8.8-R2R (In6Rd)	1.000	ST	
X-X	38	7.311-421.0	Hexagon nut M 5-04-A2E ISO 10511	1.000	ST	
X-X	39	7.311-006.0	Hexagon nut M10 -8-A3E ISO 4032	1.000	ST	
X-X	40	7.312-005.0	Washer 10-200HV-A3E ISO 7090	1.000	ST	
X-X	41	2.641-968.0	Conversion kit insert screw connector	1.000	ST	
X-X	42	2.641-965.0	Conversion kit shearing shackle KM 75/40	1.000	ST	
	43	7.306-084.0	Screw M 5x40-ST- 8.8-A2R (IN6RD)	1.000	ST	
X	44	7.312-264.0	Washer 5-100HV-A3E ISO 7094	7.000	ST	
X-X	45	7.311-421.0	Hexagon nut M 5-04-A2E ISO 10511	7.000	ST	
	46	7.306-078.0	Screw M5x20 -8.8-R2R (In6Rd)	8.000	ST	
	47	7.306-187.0	Screw M5x50 -A2-70 (In6Rd)	2.000	ST	
	48	7.313-004.0	Spring washer B 8-FSt-A3E DIN 127	2.000	ST	
	49	7.312-277.0	Washer 8-200HV-A2E ISO7093-1	2.000	ST	



20 Sweep tank (0.208-758.0)

ET/VT (spare/wear parts)	Pos	Material #	Name	Qty.	Unit	var. information
	1	2.850-818.0	Sweep tank complete	1.000	ST	
	2	5.064-251.0	Reinforcement sweep tank	1.000	ST	
	3	7.303-106.0	Screw 4x12 -10.9-R2R (IN6RD)	10.000	ST	
	4	5.321-858.0	Trolley handhold	1.000	ST	
X-X	5	5.394-816.0	Skirting rear	1.000	ST	
	6	5.009-264.0	Plate skirting rear	1.000	ST	
X-X	7	6.303-193.0	Cylinder head screw M 6X 12-8.8-A2R	2.000	ST	
	8	6.903-241.0	Clamp clip	4.000	ST	
X-X	9	5.515-068.0	Wheel	2.000	ST	
	10	5.031-157.0	Slide part sweep tank KSM 750	3.000	ST	
	11	5.107-285.0	Bar sweep tank	2.000	ST	
X	12	5.064-250.0	Guide Trolley	2.000	ST	
X-X	13	7.303-112.0	Screw 6x20 -10.9-R2R (In6Rd)	9.000	ST	1.049-200 <10159, /-201 <10019, /-202 <10075
X-X	14	6.330-407.0	Spring clip	2.000	ST	
	15	7.306-094.0	Screw M6x25 -8.8-R3R (In6Rd)	4.000	ST	
X-X	16	7.312-003.0	Washer 6 -200HV-A3E ISO 7090	8.000	ST	
X-X	17	7.303-046.0	Screw M6x12 -St-R3R (In6Rd)	2.000	ST	
	18	6.303-057.0	Countersunk screw 5,0X 16-ST-A2R	3.000	ST	
	19	5.108-197.0	Locking plug long	2.000	ST	
	20	7.312-305.0	Spring washer B 6-FST-A2E DIN 137	4.000	ST	
X	21	7.311-512.0	Hexagon nut M 6-8-A2E ISO 7040	4.000	ST	
	22	5.317-063.0	Bolt	2.000	ST	
X-X	23	7.303-107.0	Screw 5x16 -10.9-P2R (K-In6Rd)	4.000	ST	

30 Sweep roller chest (0.208-762.0)



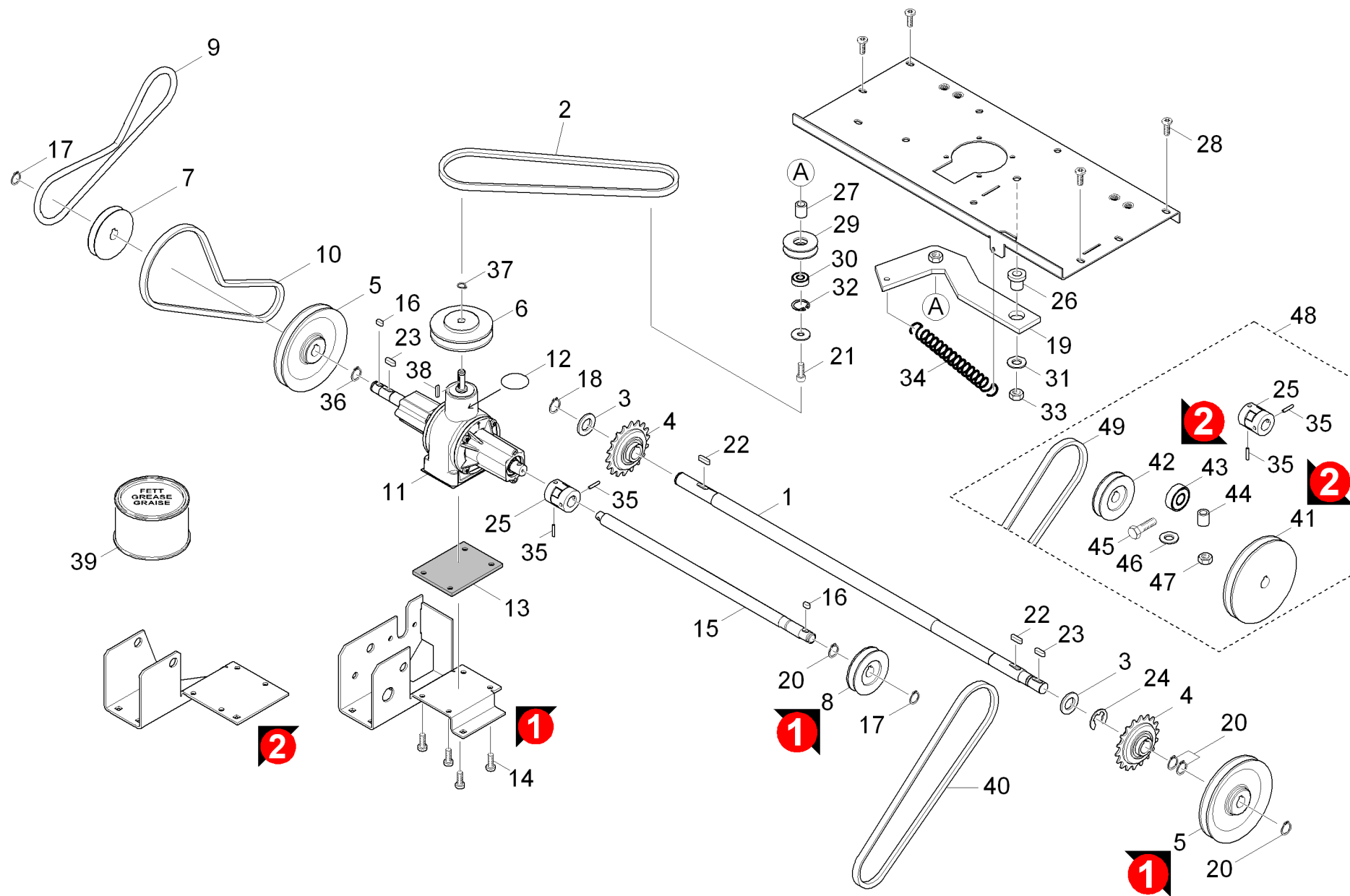
**30 Sweep roller chest (0.208-762.0)**

ET/VT (spare/wear parts)	Pos	Material #	Name	Qty.	Unit
	1	4.040-633.0	Bulk waste flap complete	1.000	ST
X-X	2	5.394-815.0	Skirting front	1.000	ST
	3	5.009-265.0	Plate skirting front	1.000	ST
	4	7.306-090.0	Screw M6x16 -8.8-R3R (In6Rd)	5.000	ST
	5	4.040-689.0	Side plate left complete	1.000	ST
	6	4.040-688.0	Side plate right complete	1.000	ST
	7	4.040-861.0	Lever left completely	1.000	ST
X	8	5.625-480.0	Belt pulley D 56,5	1.000	ST
X	9	4.253-001.0	Bearing flange shaft complete	5.000	ST
	10	6.401-331.0	Ball bearing	1.000	ST
	11	4.253-002.0	Bearing flange complete D 17	1.000	ST
	12	4.040-862.0	Lever right completely	1.000	ST
X	13	7.311-512.0	Hexagon nut M 6-8-A2E ISO 7040	1.000	ST
X-X	14	5.394-817.0	Skirting side left	1.000	ST
X-X	15	5.394-818.0	Skirting side right	1.000	ST
X-X	16	6.906-950.0	Reversing rolling mill antistatic	1.000	ST
X-X	16	6.906-884.0	Reversing rolling mill standard	1.000	ST
X-X	16	6.906-885.0	Reversing rolling mill hard	1.000	ST
X-X	16	6.906-886.0	Reversing rolling mill soft	1.000	ST
X	17	4.040-699.0	Belt stretcher gear	1.000	ST
X-X	19	7.304-399.0	Hexagonal head screw M 8x25-8.8-A2E ISO	1.000	ST
X-X	20	7.311-427.0	Hexagon nut M8 -04-A2E ISO 10511	1.000	ST
X-X	21	7.311-060.0	Hexagon nut M 8-A2-70 EN 1661	1.000	ST
X-X	22	5.116-336.0	Sleeve belt stretcher	1.000	ST
X-X	23	4.040-698.0	Belt stretcher reversing rolling mill	1.000	ST

**30 Sweep roller chest (0.208-762.0)**

ET/VT (spare/wear parts)	Pos	Material #	Name	Qty.	Unit
	24	7.304-120.0	Hexagonal head screw M 6x35-A4-70 ISO 4	1.000	ST
	25	7.312-045.0	Washer 6-200HV-P4E ISO 7089	1.000	ST
X	26	5.116-408.0	Sleeve	1.000	ST
X	27	7.401-047.0	Ball bearing 626-2RS -Wälzl.St. DIN 625	2.000	ST
X	28	4.253-003.0	Bearing flange complete D 15	1.000	ST
	29	5.110-177.0	Sleeve	4.000	ST
	30	7.306-079.0	Screw M5x25 -8.8-R2R (In6Rd)	6.000	ST
	31	7.312-305.0	Spring washer B 6-FST-A2E DIN 137	16.000	ST
	32	7.306-092.0	Screw M6x20-ST- 8.8-R3R (IN6RD)	20.000	ST
X-X	33	7.306-105.0	Screw M6x30 -8.8-R3R (In6Rd)	6.000	ST
X-X	34	7.311-425.0	Hexagon nut M6 -04-A2E ISO 10511	7.000	ST
X-X	35	6.330-103.0	Extension spring	1.000	ST
X-X	36	7.312-282.0	Washer 5 -A2 ISO 7093-1	12.000	ST
X-X	37	7.311-421.0	Hexagon nut M 5-04-A2E ISO 10511	6.000	ST
X-X	38	7.318-084.0	Parallel key 5x5x12 -C45R DIN 6885-1	1.000	ST
	40	7.312-045.0	Washer 6-200HV-P4E ISO 7089	18.000	ST
X-X	41	7.343-047.0	Lock washer 10-FST-A2E DIN 6799	2.000	ST
X-X	42	7.303-112.0	Screw 6x20 -10.9-R2R (In6Rd)	1.000	ST
X-X	43	7.312-276.0	Washer 6 -200HV-A2E ISO7093-1	6.000	ST
X-X	45	7.343-031.0	Locking ring 14x1-FST-PHR DIN 471	1.000	ST
X-X	46	5.332-114.0	Helical spring	1.000	ST
	47	6.321-221.0	Hand grip yellow	2.000	ST
	48	5.116-439.0	Sleeve belt stretcher	1.000	ST

40 Transmission completely (0.208-763.0)

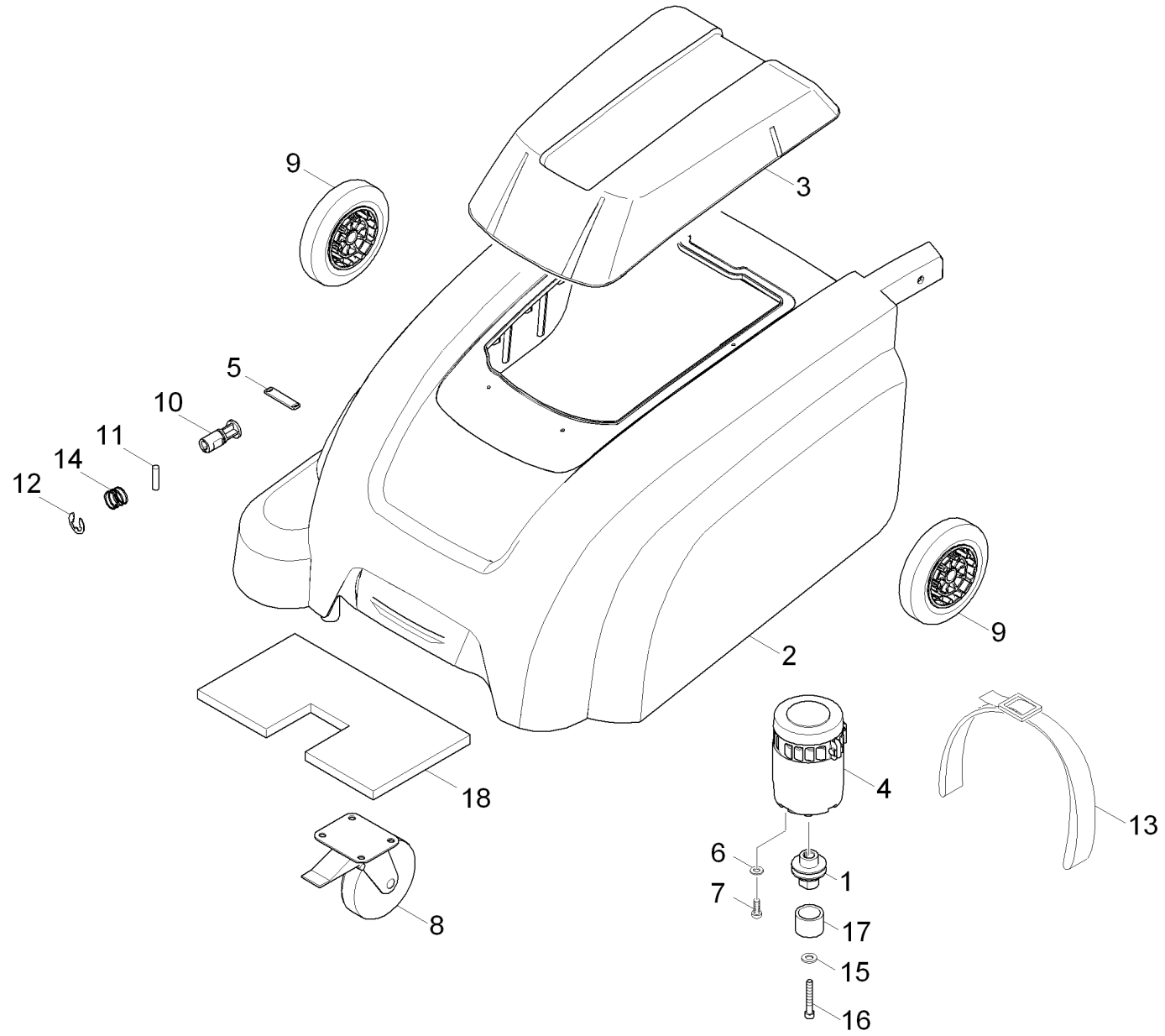


#### 40 Transmission completely (0.208-763.0)

ET/VT (spare/wear parts)	Pos	Material #	Name	Qty.	Unit	from ser.nr.	var. information
	1	5.100-523.0	Shaft wheel axle	1.000	ST		
X-X	2	6.348-438.0	Large V-belt motor	1.000	ST		
X-X	3	7.312-019.0	Washer 16-200HV-A3E ISO7090	3.000	ST		
	4	6.401-413.0	Sprag clutch	2.000	ST		
X-X	5	5.625-277.0	Belt pulley	2.000	ST		
	6	5.625-423.0	Belt pulley	1.000	ST		
	7	5.625-481.0	Belt pulley SB	1.000	ST		
	8	5.625-482.0	Belt pulley gear	1.000	ST		
X-X	9	6.348-436.0	Round belt D10	1.000	ST		
X-X	10	6.348-437.0	Large V-belt reversing rolling mill	1.000	ST		
X-X	11	4.060-831.0	Gear replacement	1.000	ST		
X	12	6.363-394.0	O-Ring seal 57x1,5	1.000	ST		
X	13	6.273-298.0	Seal	1.000	ST		
	14	7.306-076.0	Screw M 5x12-ST- 8.8-A2R (IN6RD)	4.000	ST		
	15	5.100-531.0	Shaft gear long	1.000	ST		
X-X	16	7.318-090.0	Parallel key A5x5x10-C45R DIN 6885	2.000	ST		
X-X	17	7.343-031.0	Locking ring 14x1-FST-PHR DIN 471	2.000	ST		
X-X	18	7.343-029.0	Locking ring 17x1-FST-RF DIN 471	1.000	ST		
	19	4.040-642.0	Belt stretcher motor	1.000	ST		
X-X	20	7.343-015.0	Locking ring 15x1-FST-RF DIN 471	4.000	ST		
	21	7.306-521.0	Cylinder head screw M 8x25-8.8-A2E DIN	1.000	ST		
X	22	7.318-003.0	Parallel key 5X 5X 18-C45R DIN 6885	2.000	ST		
X-X	23	7.318-002.0	Parallel key 5x5x16 -C45R DIN 6885-1	2.000	ST		
X-X	24	7.343-304.0	Lock washer 15 -A2 DIN 6799	1.000	ST		
X-X	25	6.465-027.0	Coupler	1.000	ST		

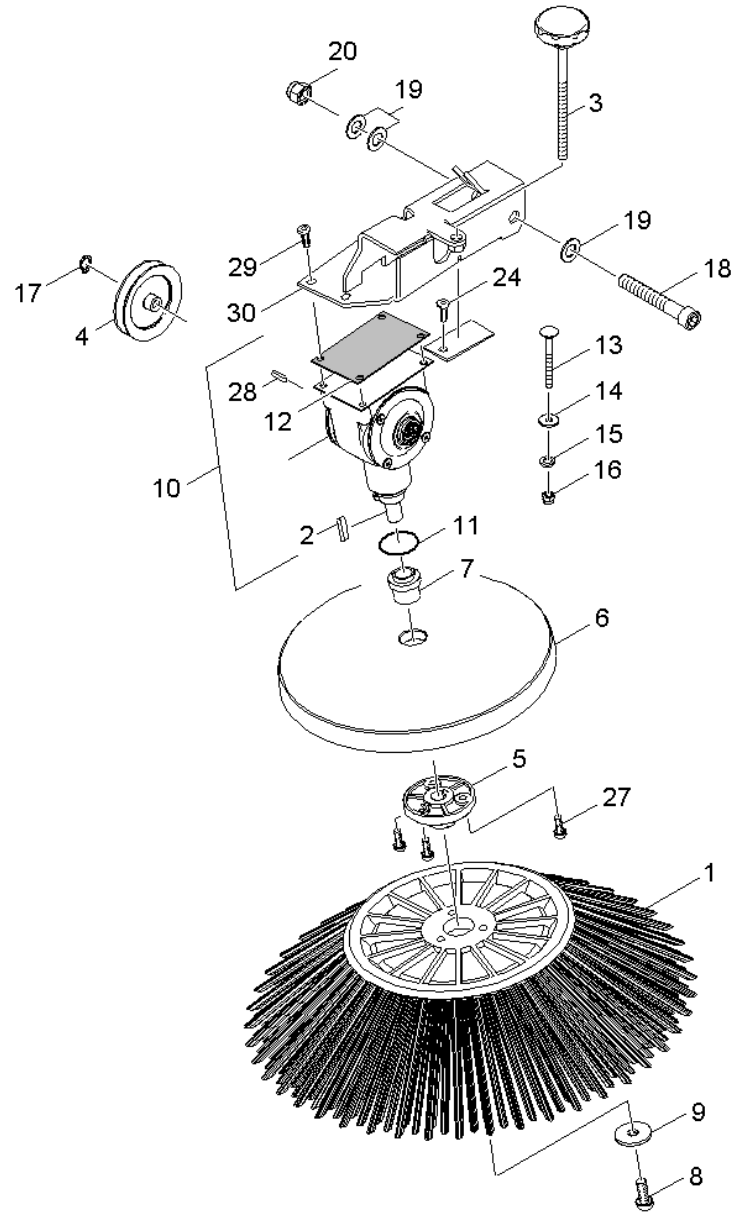
#### 40 Transmission completely (0.208-763.0)

ET/VT (spare/wear parts)	Pos	Material #	Name	Qty.	Unit	from ser.nr.	var. information
X-X	26	5.116-336.0	Sleeve belt stretcher	1.000	ST		
	27	5.317-069.0	Bush	1.000	ST		
	28	7.306-092.0	Screw M6x20-ST- 8.8-R3R (IN6RD)	4.000	ST	10143	1.049-202.0
	29	5.625-375.0	Belt pulley belt stretcher 750 HO	1.000	ST		
X	30	7.401-149.0	Ball bearing 608-2RS -Wälzl.St DIN 625	1.000	ST		
	31	7.312-277.0	Washer 8-200HV-A2E ISO7093-1	1.000	ST		
	32	7.343-105.0	Locking ring 22x1-FST-PHR DIN 472	1.000	ST		
X-X	33	7.311-060.0	Hexagon nut M 8-A2-70 EN 1661	1.000	ST		
X	34	6.330-183.0	Extension spring	1.000	ST		
X	35	6.491-557.0	Spring pin	2.000	ST		Version 1 (l = 25,4mmm)
X-X	35	7.314-945.0	Spring pin 5,0x28-St ISO 8752	2.000	ST		Version 2 (l = 28mm)
X-X	36	7.343-004.0	Locking ring 15x1-FST-PHR DIN 471	1.000	ST		
	37	7.343-033.0	Locking ring 9x1-FST-phr DIN 471	1.000	ST		
	38	7.318-105.0	Parallel key A3x3x18 -C45R DIN 6885	1.000	ST		
	39	6.288-095.0	Viscous oil	1.000	ST		
X-X	40	6.348-454.0	Large V-belt 1292 mm	1.000	ST		
	41	5.625-505.0	Belt pulley D=115mm	1.000	ST		
	42	5.625-500.0	Belt pulley gear	1.000	ST		
X	43	7.401-047.0	Ball bearing 626-2RS -Wälzl.St. DIN 625	2.000	ST		
X	44	5.116-408.0	Sleeve	1.000	ST		
	45	7.304-120.0	Hexagonal head screw M 6x35-A4-70 ISO 4	1.000	ST		
	46	7.312-045.0	Washer 6-200HV-P4E ISO 7089	1.000	ST		
X	47	7.311-512.0	Hexagon nut M 6-8-A2E ISO 7040	1.000	ST		
X-X	48	2.641-958.0	Conversion kit belt pulley KM 75/40	1.000	ST		
X-X	49	6.348-355.0	Large V-belt Z/10	1.000	ST		



**50 Battery transmission (0.208-854.0)**

ET/VT (spare/wear parts)	Pos	Material #	Name	Qty.	Unit
	1	5.100-528.0	Shaft motor battery	1.000	ST
	2	5.068-201.0	Cover battery Windsor Blau	1.000	ST
	3	5.064-263.0	Flap service battery	1.000	ST
	4	6.613-111.0	Direct current motor 400 W	1.000	ST
	5	5.094-328.0	Plate closure cover	1.000	ST
X-X	6	7.312-003.0	Washer 6 -200HV-A3E ISO 7090	4.000	ST
	7	7.306-092.0	Screw M6x20-ST- 8.8-R3R (IN6RD)	4.000	ST
X-X	8	6.435-322.0	Castor	1.000	ST
X	9	6.435-767.0	Wheel complete traceless	2.000	ST
	10	5.116-322.0	Bolt closure	1.000	ST
	11	7.314-153.0	Straight pin 5m6x35-A1 ISO 2338	1.000	ST
X-X	12	7.343-304.0	Lock washer 15 -A2 DIN 6799	1.000	ST
X	13	6.277-607.0	Retaining belt 1x25x1700	2.000	ST
X-X	14	5.332-236.0	Helical spring	1.000	ST
	15	7.312-277.0	Washer 8-200HV-A2E ISO7093-1	1.000	ST
X-X	16	7.306-222.0	Cylinder head screw M8x55 -A4-70 ISO 47	1.000	ST
	17	5.116-369.0	Sleeve blower wheel BAT	1.000	ST
	18	5.007-673.0	Plate	1.000	ST



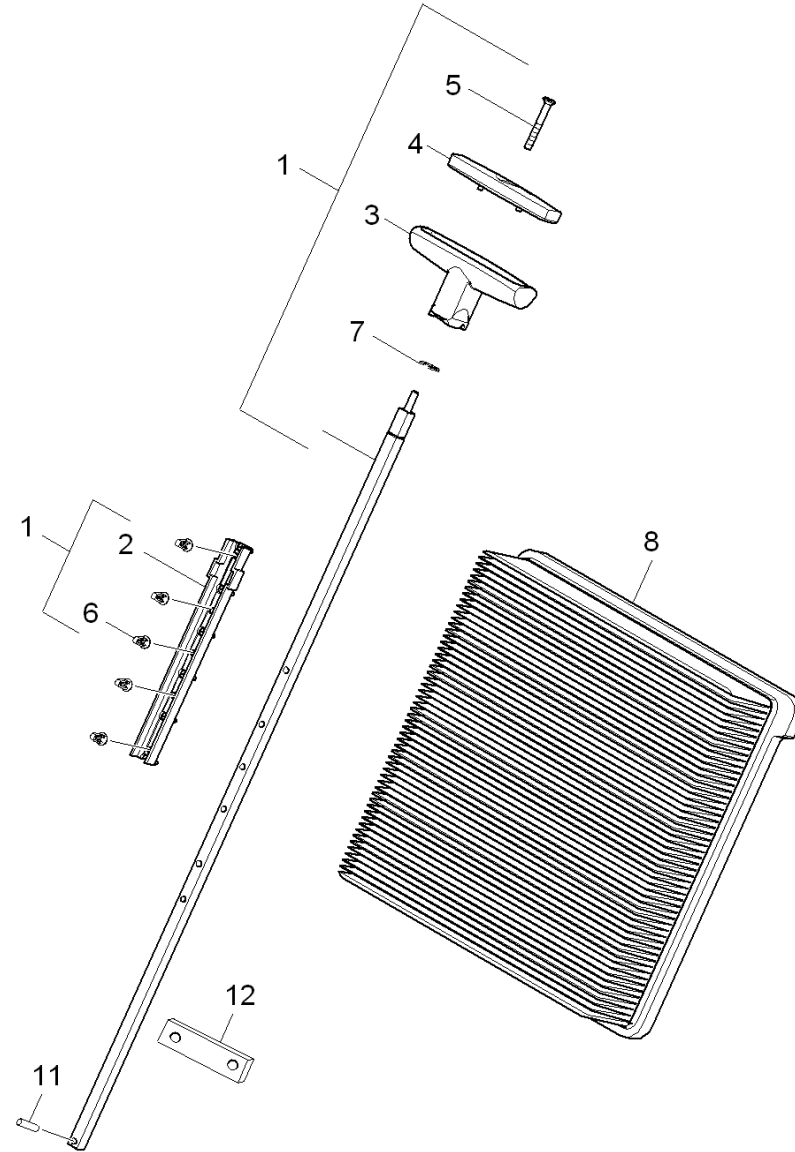
**60 Side broom (0.208-765.0)**

ET/VT (spare/wear parts)	Pos	Material #	Name	Qty.	Unit
X-X	1	6.905-626.0	Side broom soft	1.000	ST
X-X	1	6.905-625.0	Side broom hard	1.000	ST
X-X	2	7.318-079.0	Parallel key A 5x5x25-C45R DIN 6885	1.000	ST
	3	6.321-232.0	Star grip	1.000	ST
	4	5.625-490.0	Belt pulley round belt D10	1.000	ST
X-X	5	5.120-305.0	Hub	1.000	ST
X-X	6	5.064-252.0	Rejecting plate	1.000	ST
	7	5.116-321.0	Sleeve rejecting plate	1.000	ST
	8	7.306-092.0	Screw M6x20-ST- 8.8-R3R (IN6RD)	1.000	ST
X-X	9	7.312-260.0	Washer 6 -100HV-A3E ISO 7094	1.000	ST
	10	6.454-205.0	Gear side brush	1.000	ST
X-X	11	6.363-292.0	Joint ring NILOS 6002	2.000	ST
X	12	6.273-298.0	Seal	1.000	ST
	13	7.303-233.0	Saucer-head screw M6x60 -St-A0P DIN 603	5.000	ST
X-X	14	7.312-276.0	Washer 6 -200HV-A2E ISO7093-1	4.000	ST
	15	7.312-305.0	Spring washer B 6-FST-A2E DIN 137	5.000	ST
X	16	7.311-512.0	Hexagon nut M 6-8-A2E ISO 7040	5.000	ST
	17	7.343-014.0	Locking ring 8x0,8-FST-PHR DIN 471	1.000	ST
X-X	18	7.306-122.0	Cylinder head screw M12x80- 8.8-A3E IS	1.000	ST
X-X	19	5.115-681.0	Washer	3.000	ST
X-X	20	7.311-515.0	Hexagon nut M12-8-A2E ISO 7040	1.000	ST
X-X	24	7.303-112.0	Screw 6x20 -10.9-R2R (In6Rd)	1.000	ST
X-X	27	7.306-500.0	Cylinder head screw M6x12-8.8-A2E DIN 6	3.000	ST
	28	7.318-006.0	Parallel key 3x3x10-C45R DIN 6885	1.000	ST
	29	7.306-076.0	Screw M 5x12-ST- 8.8-A2R (IN6RD)	4.000	ST

60 Side broom (0.208-765.0)

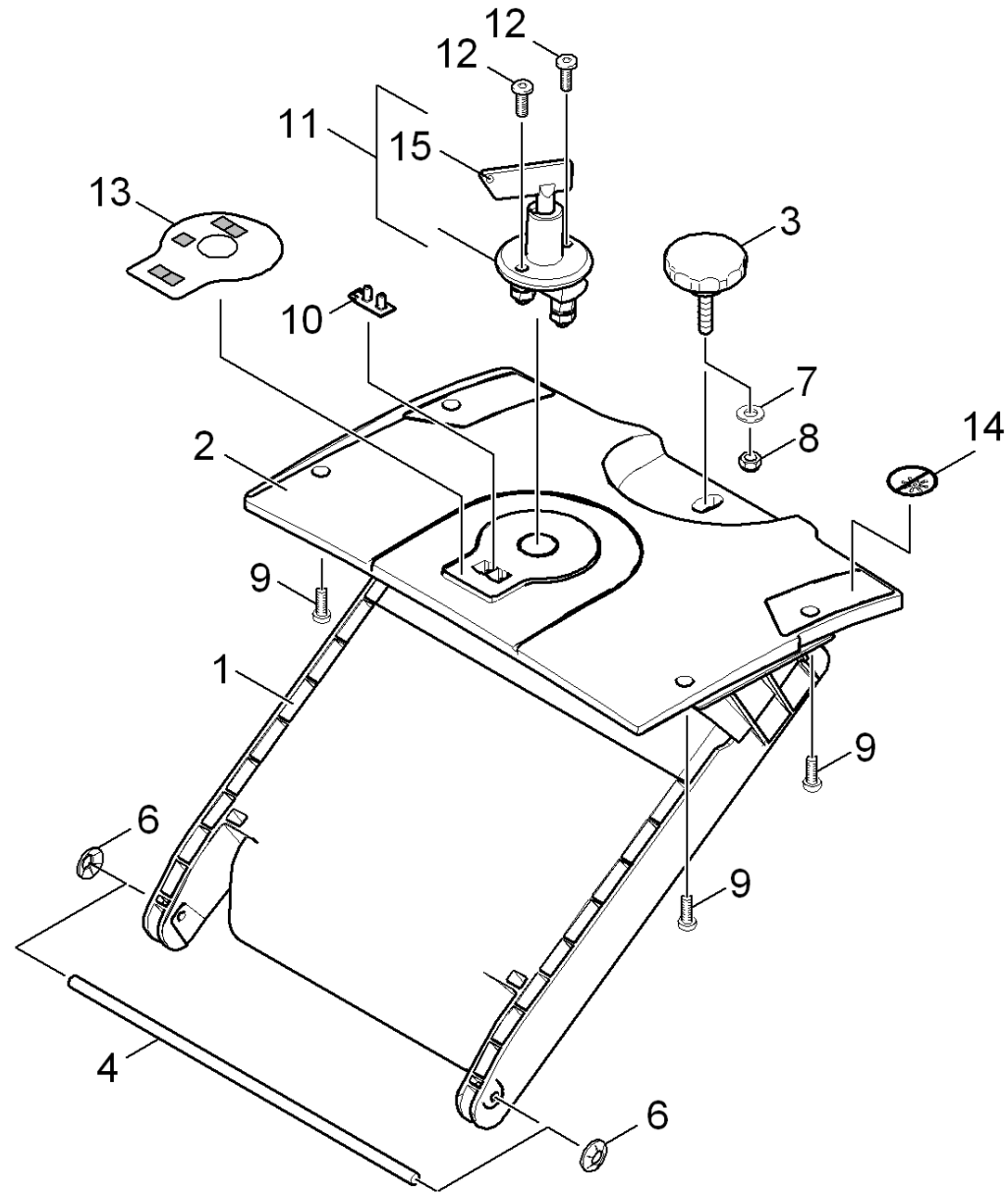
---

ET/VT (spare/wear parts)	Pos	Material #	Name	Qty.	Unit
X	30	5.094-266.0	Sheet metal component arm side broom	1.000	ST



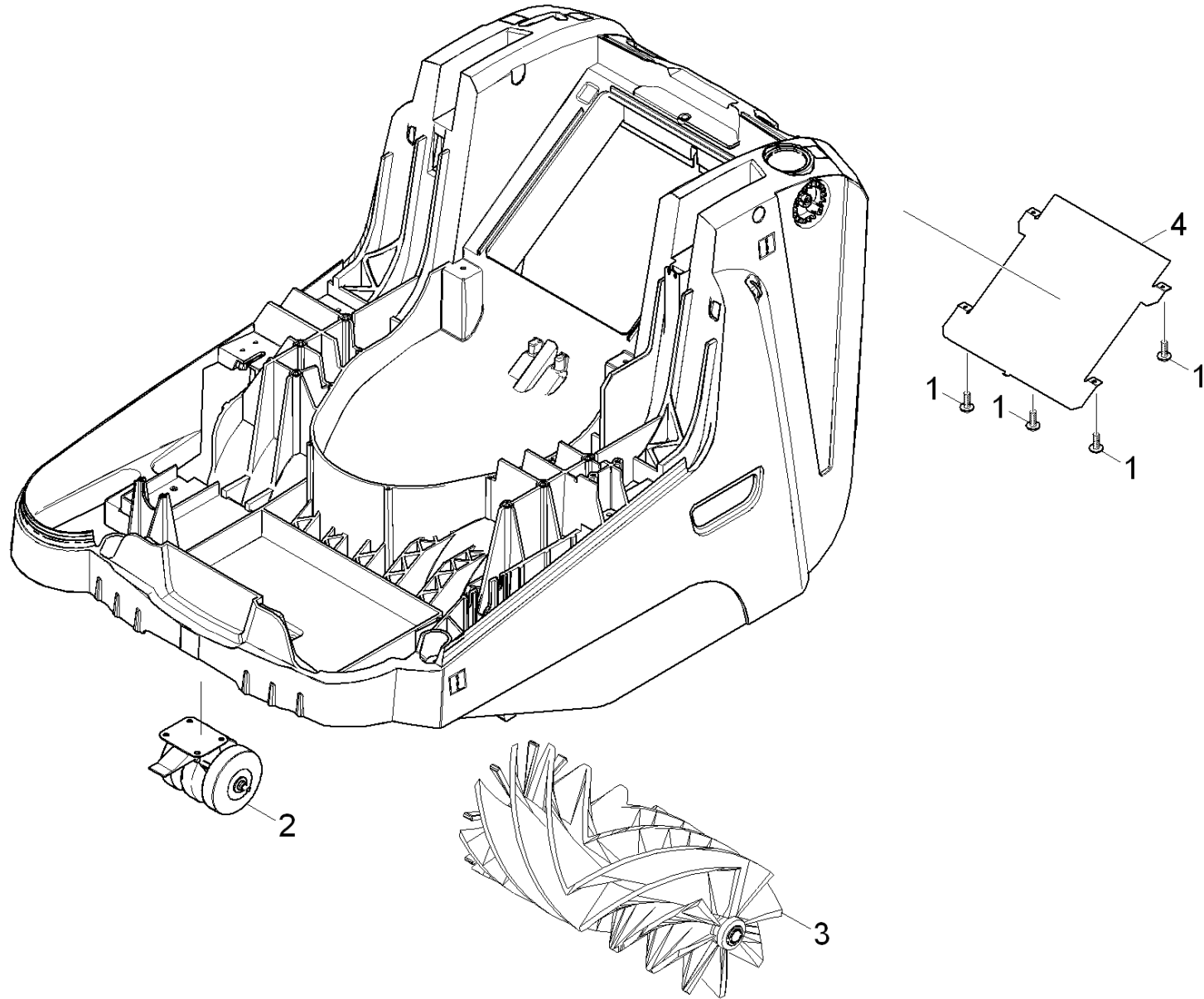
**70 Filter box (0.208-766.0)**

ET/VT (spare/wear parts)	Pos	Material #	Name	Qty.	Unit
	1	4.040-643.0	Filter vibrator complete	1.000	ST
X-X	2	5.030-900.0	Stripper	1.000	ST
	3	5.321-736.0	Handhold	1.000	ST
	4	5.326-028.0	Button	1.000	ST
	5	7.305-094.0	Countersunk screw M5x40 -A2-70 (IN6RD)	1.000	ST
X-X	6	6.315-068.0	Rivet	5.000	ST
X-X	7	7.343-303.0	Locking ring 8-A2 DIN 6799	1.000	ST
X-X	8	5.731-635.0	Filter cartridge without groove KM 75/40	1.000	ST
X-X	11	7.314-945.0	Spring pin 5,0x28-St ISO 8752	1.000	ST
	12	5.009-352.0	Sheet metal component guide	1.000	ST



## 80 Operating unit battery (0.208-855.0)

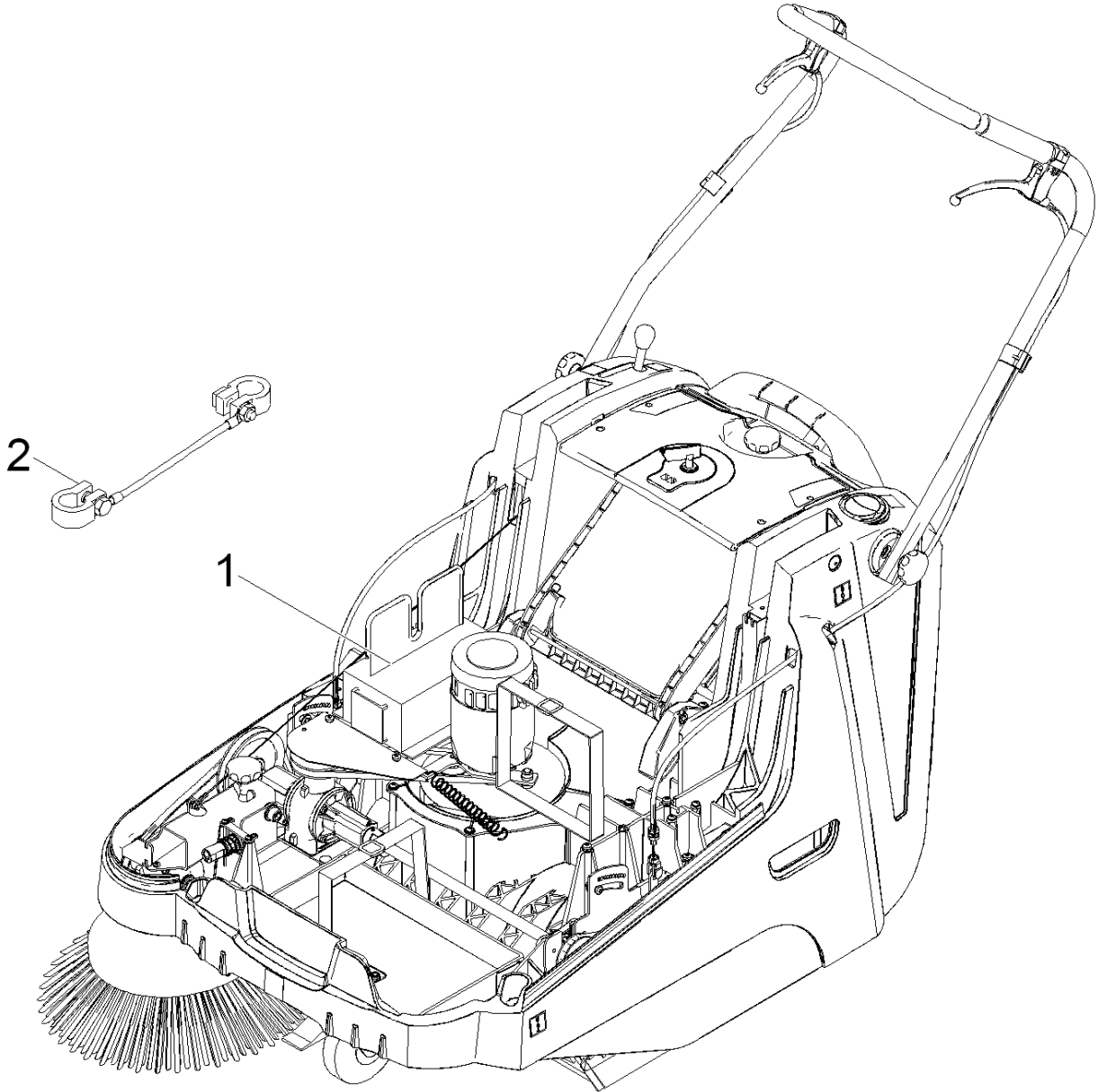
ET/VT (spare/wear parts)	Pos	Material #	Name	Qty.	Unit
	1	5.064-249.0	Cover filter	1.000	ST
	2	5.093-326.0	Operating unit battery	1.000	ST
	3	6.321-231.0	Star grip	1.000	ST
	4	7.316-212.0	Bolt B 6x50 -St-A2E ISO 2341	2.000	ST
X-X	5	7.316-321.0	Cotter 1,6x12-ST-A2E ISO 1234	2.000	ST
X-X	6	7.312-140.0	Washer 6-160HV-A3E ISO 8738	4.000	ST
X-X	7	7.312-004.0	Washer 8 -200HV-A3E ISO 7090	1.000	ST
X-X	8	7.311-427.0	Hexagon nut M8 -04-A2E ISO 10511	1.000	ST
X-X	9	7.303-107.0	Screw 5x16 -10.9-P2R (K-In6Rd)	4.000	ST
X-X	10	6.682-776.0	Circuit board LED BR/BD 40/25	1.000	ST
X-X	11	6.634-196.0	Key switch	1.000	ST
X-X	12	7.303-112.0	Screw 6x20 -10.9-R2R (In6Rd)	2.000	ST
	13	5.391-881.0	Foil control panel KM 75/40 W BAT	1.000	ST
	14	5.390-853.0	Label	1.000	ST
X-X	15	6.634-201.0	Key	1.000	ST



**90 ABS carpet sweep unit (0.208-857.0)**

---

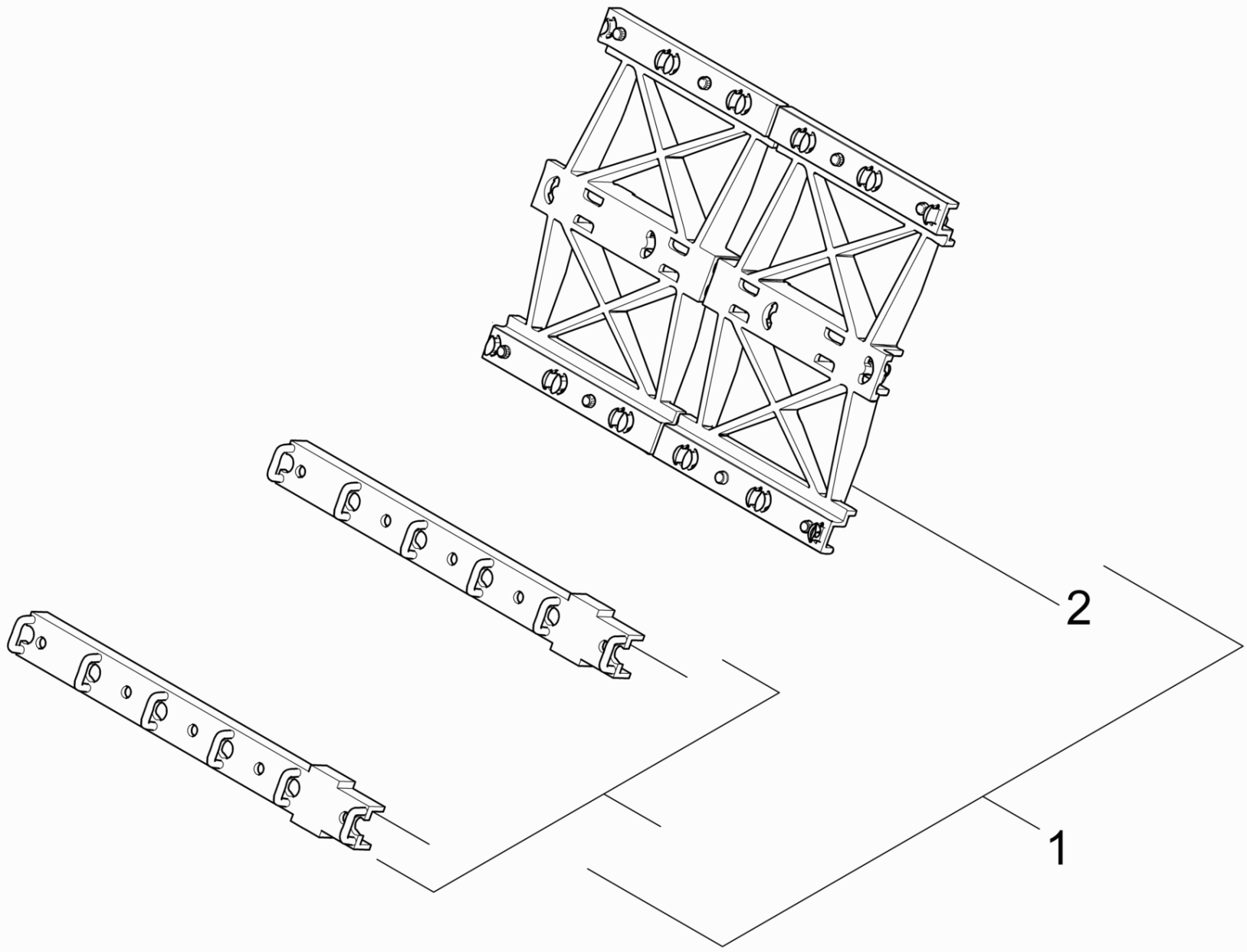
<b>ET/VT (spare/wear parts)</b>	<b>Pos</b>	<b>Material #</b>	<b>Name</b>	<b>Qty.</b>	<b>Unit</b>
X-X	1	7.303-112.0	Screw 6x20 -10.9-R2R (In6Rd)	4.000	ST
	2	4.515-297.0	Castor complete	1.000	ST
X-X	3	6.906-950.0	Reversing rolling mill antistatic	1.000	ST
	4	5.009-609.0	Perforated plate	1.000	ST



**100 Battery (0.209-010.0)**

---

Pos	Material #	Name	Qty.	Unit	var. information
1	6.654-240.0	Battery charger KFI 120V/60Hz 60Ah	1.000	ST	1.049-202.0
2	6.647-874.0	Cable complete	1.000	ST	1.049-202.0



**110 Add-on kit filter vibrator (0.209-501.0)**

---

Pos	Material #	Name	Qty.	Unit
1	2.851-040.0	ABS filter vibrator double	1.000	ST
2	5.033-248.0	Filter vibrator double	1.000	ST