



20 GALLON WET DRY VACUUM

20 Gallon Wet & Dry Vacuum • 110" Water Lift Vac Motor

• 24" Front Mount Squeegee Assembly • 50' Cord

• Special Tip Pour Feature • Warranty

*Contractor Tool Kit Includes: Wet p/u Tool, Dry p/u Tool, Crevice Tool,
Upholstery Tool, Dusting Brush,*

20 GALLON WET DRY VACUUM SAFETY INSTRUCTIONS

Description:

Each Renown wet vacuum features an automatic float shut off system designed to keep water and foam out of the vacuum motor. The unique tip and pour design makes draining into tall slop sinks or toilets easy to do. The large 1.33 HP vacuum motor provides superior suction resulting in dry, readily usable floors. The dry filter bag element converts this tip and pour vacuum into a dry vacuum for the appropriate applications. A drain hose is attached to the front of the machine for convenient draining. A 24-inch front mounted squeegee and contractor tool kit is included with each machine.

Features/Benefits:

Tip & Pour Tank: 20-gallon blow molded tank has 12-year warranty. Tank will not rust. Removable tip & pour drain allows user to easily empty tank.

Hose Drain: 1" flexible drain hose is convenient for facilities with floor surface drains.

Front Mount Squeegee: 24" front mount squeegee assembly is standard with an optional 30" squeegee assembly.

Transport Wheels: Non-marking gray rubber wheels will not mark floors.

Modular Vacuum Motor: No tools needed to remove or replace vacuum head. Automatic float shut off prevents motor water damage.

Crush Proof Vacuum Hose: 9' flexible hose will not crush if stepped on.

Micro Filter: Dry filter keeps dirt and dust from exiting vacuum when used in dry applications. Wet (blue mesh) filter prevents foam from entering vacuum motor.

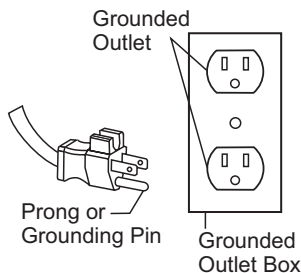
Warranty: 3-year vac motor replacement. 12-year tank warranty against manufacturer defect.

! WARNING ! IMPORTANT SAFETY INSTRUCTIONS

Carefully read and understand this manual before operating this machine.

This machine must be grounded!

Grounding provides a path of least resistance for electric current. To reduce the risk of electric shock should the machine malfunction This appliance is equipped with a cord having an equipment-grounding conductor and grounding plug. The plug must be plugged into an appropriate outlet that is properly installed and grounded in accordance with all local codes and ordinances. Do not remove the ground pin under any circumstances.



This machine is intended for commercial use. It is constructed for use in an indoor environment and is not intended for any other use. Use only recommended accessories.

1. Do not operate machine:

- Unless trained and authorized.
- Unless you have read and understand the operators manual.
- In flammable or explosive areas.
- With a damaged cord or plug.
- If not in proper operating condition.
- In outdoor areas.
- In standing water.
- Without bag/filters in place.
- With the use of extension cords.

2. Before operating machine:

- Make sure all safety devices are in place and operating properly.

3. When using machine:

- Do not run machine over cord.
- Do not pull machine by cord or plug.
- Do not pull cord around sharp edges or corners.
- Do not unplug by pulling on the cord.
- Do not stretch cord.
- Do not handle plug with wet hands.
- Keep cord away from heated surfaces.
- Do not pick up burning or smoking debris such as cigarettes, matches or hot ashes.
- Report machine damage or faulty operation immediately.

4. Before leaving or servicing machine:

- Turn off machine.
- Unplug cord from outlet.

5. When servicing machine:

- Unplug cord from outlet.
- Use manufacturer supplied or approved replacement parts.

! To avoid electrical shock, please replace the power cord immediately if any damage is being detected. The replacement must be performed only by an authorized person or by our customer service center.

20 GALLON WET DRY VACUUM OPERATING INSTRUCTIONS

Wet Pick-Up

1. Remove vacuum head and remove the cloth or paper filter from vacuum.
2. While vacuum head is removed, check to make sure that the float shut-off is unobstructed and fully functional.
3. Add blue nylon "bubble buster" filter into tank.
4. Replace vacuum head and latch it in place.
5. Connect vacuum hose to inlet on the machine body.
6. Attach appropriate accessory tool for the job to be completed.
7. Plug power cord into a grounded outlet.

Do not use extension cord in conjunction with the standard power cord!

7. If using the front-mounted squeegee assembly, be sure that squeegee is attached to front of machine.
8. If using the front-mounted squeegee assembly, lower squeegee to the floor by depressing the top half of the pedal (rear of the machine) forward with your foot.
9. Turn power switch to "on" position.
10. During wet pick-up, the float shut-off will automatically prevent water from entering the recovery tank once the recovery tank is full.

If foam develops in the recovery tank during wet vacuuming, use de-foamer chemical to help eliminate the foam. Foam will not activate the float shut-off, and therefore, may cause vacuum motor damage.

11. To raise the squeegee assembly back to transport position, depress the bottom half of the pedal (rear of the machine) downward with your foot.

Be sure that the handle is properly assembled on machine body prior to operating machine.

Dry Pick-Up

1. Remove vacuum head and be sure the cloth or paper filter is properly installed.

Do not operate machine without bag or filter properly installed!

2. Replace vacuum head and latch it in place.
3. Connect vacuum hose to inlet on the machine body.
4. Attach appropriate accessory tool for the job to be completed.
5. Plug power cord into a grounded outlet.

Do not use extension cord in conjunction with the standard power cord!

6. Turn power switch to "on" position.
7. Check the filter bag periodically to see if it is full. For optimal performance, replace bag when it is 3/4 full.

Draining the Recovery Tank

1. Unplug machine from power outlet.
2. Transport machine to nearest floor drain or bucket.
3. Remove drain hose from front of machine. Remove ball plug from drain hose and drain the contents of the tank.
4. After the contents have drained, remove the vacuum head and rinse recovery tank with clean water.
5. Replace the ball plug on the drain hose and hang hose back on the front of the machine.

To prevent odors in the recovery tank, remove the vacuum head when machine is not in operation to allow air to circulate.

Maintenance

To keep the machine performing well for many years, please follow the following maintenance procedures.

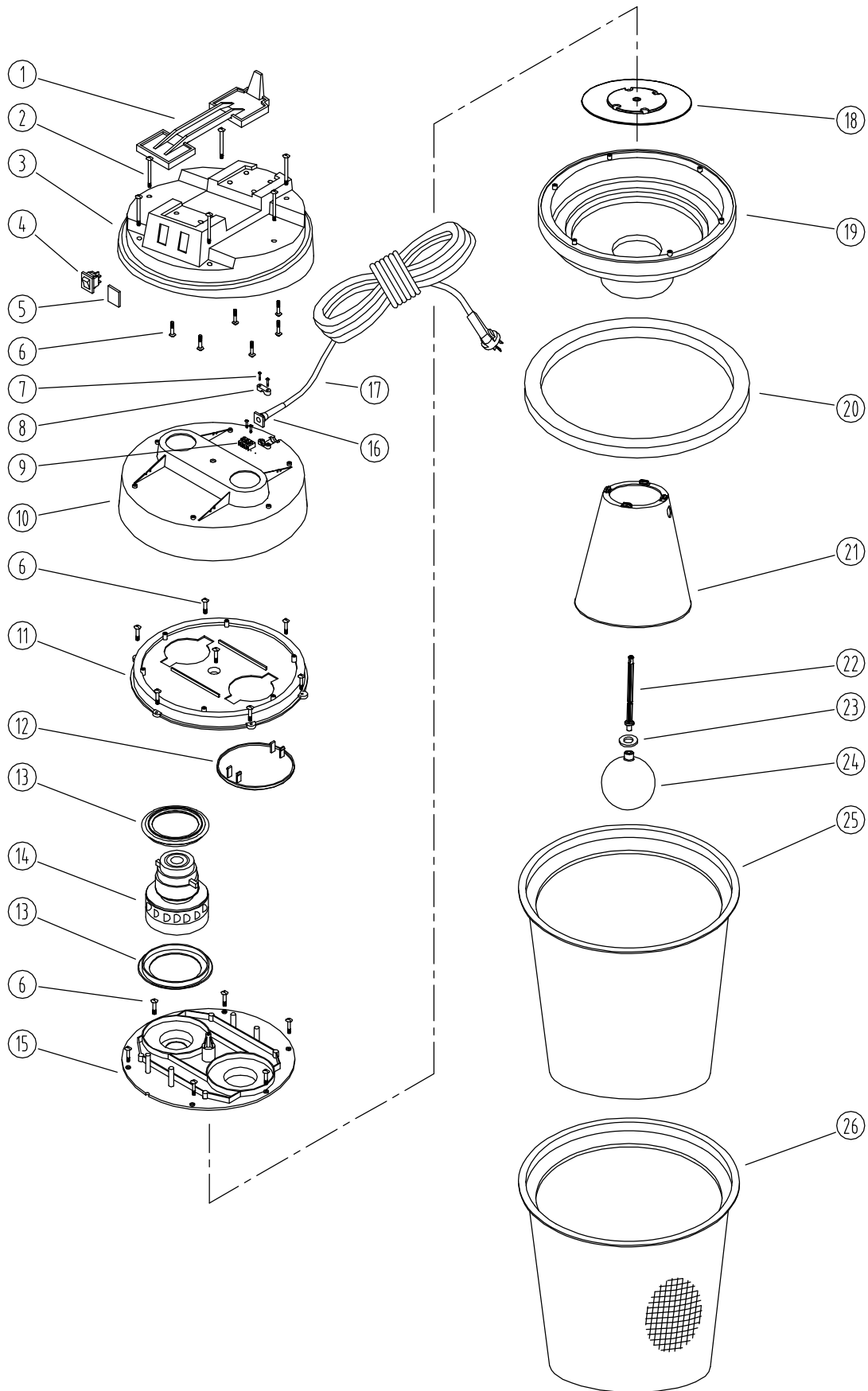
Always confirm that the machine is unplugged prior to performing any maintenance or repairs.

1. Drain and rinse recovery tank after each use.
 2. Clean float shut-off after each use.
 3. Check bag to see if full after each use. Replace bag when it is 3/4 full.
 4. Clean outside of machine with a mild cleaner.
 5. Check power cord for any damage. If any damage is detected, replace the cord immediately.
 6. Clean squeegee blades with a cloth.
- Do not use your fingers to wipe the blades!***
7. Check vacuum hose for holes and clogs.
 8. Lubricate wheels, casters and axles with a water resistant lubricant every month.
 9. Check machine for loose or missing nuts and bolts, and replace as necessary.

Storage

1. Unplug machine from power source.
2. Store in upright position in a dry area.
3. Store with squeegee assembly off the ground.
4. Store with vacuum head off unit so that tank may breathe.

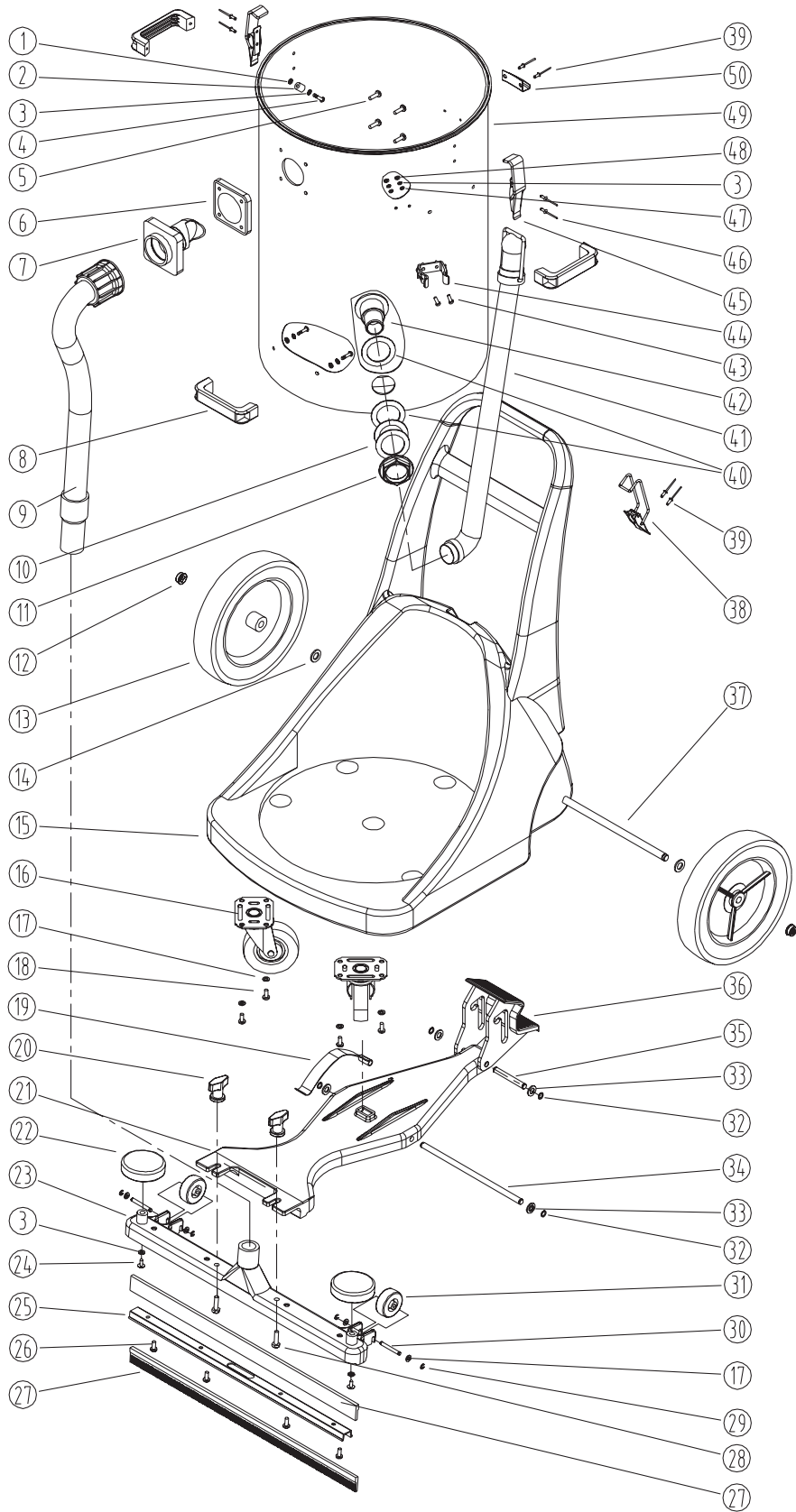
20 GALLON WET DRY VACUUM VACUUM GROUP PARTS LIST



20 GALLON WET DRY VACUUM VACUUM GROUP PARTS LIST

DIA NO	PART NUMBER	DESCRIPTION	NO REQ'D
1	GV70006S	HANDLE	1
2	GT13005	PH ST 5 x 74	6
3	GV70007S	COVER,VAC HEAD	1
4	VA91346	SWITCH	1
5	GV70103	COVER,SWITCH	1
6	GT13001	PH ST 5 x 12	19
7	VA13470	PH 3 x 16	4
8	VA21517	CLAMP BLOCK	1
9	VV50000	CONNECTOR	3
10	GV70005S	MOTOR COVER	1
11	GV70003A	MOTOR MOUNTING COVER	1
12	GV70105	SEAL PLATE	1
13	VA41032	GASKET,MOTOR	2
14	ZD49000A	VAC MOTOR,115V	1
15	GV70001S	BOTTOM PLATE,MOTOR	1
16	VA21521	GROMMET	1
17	VA65001	POWER CORD,14/3C SJTW 15m	1
18	GV70204	SEAL PLATE	1
19	GV70201	MOTOR MOUNTING BASE	1
20	GV70009	GASKET,MOUNTING BASE	1
21	GV70206	TRUMPET	1
22	GV25003	POLE, BALL	1
23	GV25007	"O" RING	1
24	GV25005	BALL	1
25	GV0072A	VACUUM FILTER ASSY	1
26	VW70207	BUBBLE BUSTER	1

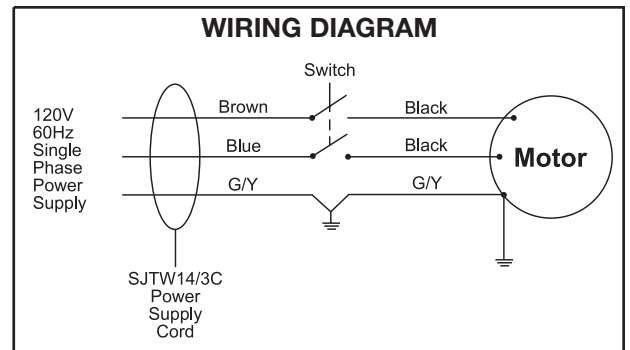
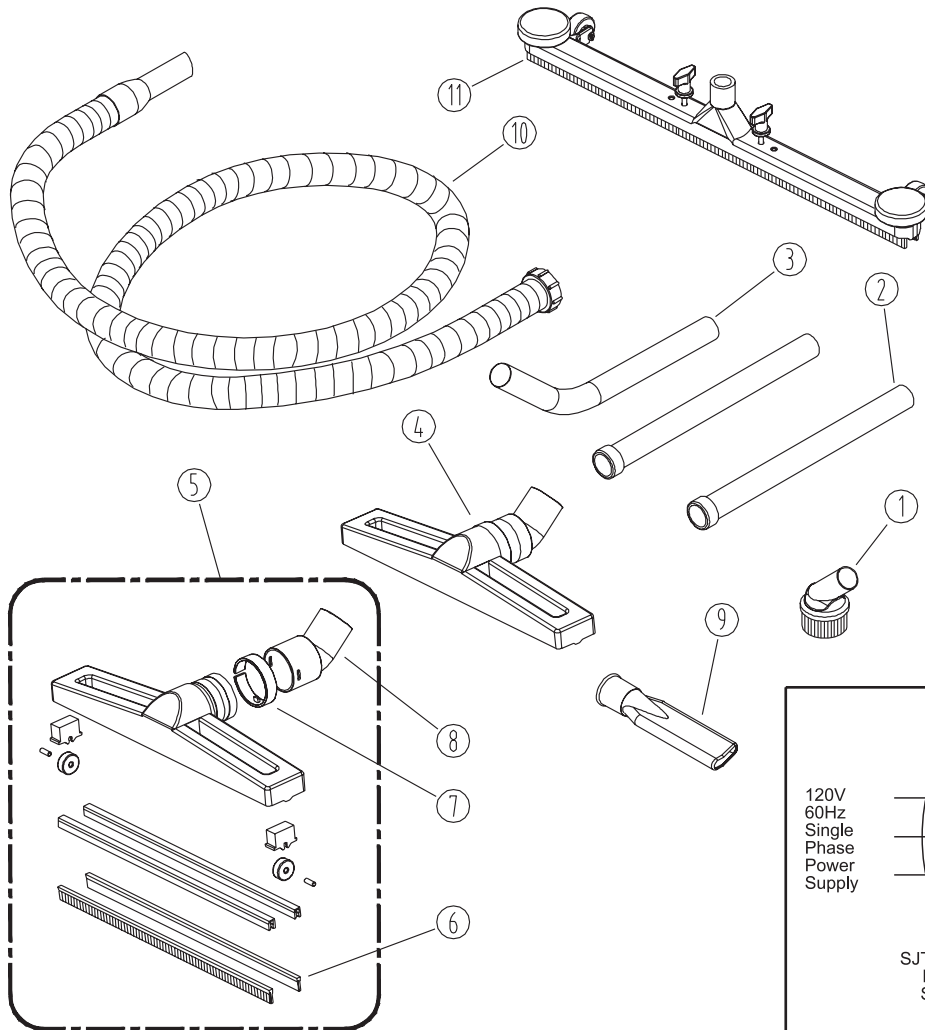
20 GALLON WET DRY VACUUM
TANK GROUP PARTS LIST



20 GALLON WET DRY VACUUM TANK GROUP PARTS LIST

DIA NO	PART NUMBER	DESCRIPTION	NO REQ'D
1	GV70013	"O" RING	6
2	GV70029	SPACER, HANDLE LIFT	6
3	VF13474A	WASHER, PLAIN, M5 x 16	10
4	VA13475	SCREW, M5 x 25, PH	6
5	VA13477	SCREW, ST4 x 16, SST, PH	4
6	GV70042	GASKET, INTAKE	1
7	VA21513	INTAKE	1
8	GV70011R	HANDLE, LIFT	3
9	VA85018	HOSE ASSEMBLY	1
10	GT13036	WASHER, PLAIN, M42.6 x 61	2
11	VA20103	NUT, OUTLET	1
12	VW10011	CAP, AXLE	2
13	VA75004R	10" WHEEL	2
14	VV60113S	WASHER, PLAIN, M12.7 x 25	2
15	VW70201	HANDLE	1
16	VA91342	3.5" CASTER	2
17	VF13600	WASHER, PLAIN, M6 x 16	8
18	VF13495	BOLT, M6 x 16, SST	4
19	VA75005	LEAF SPRING	1
20	VA85003	KNOB, FLOOR TOOL	2
21	VA75006	MOUNTING PLATE, FLOOR TOOL	1
22	VA75007	BUMPER	2
23	VA85002	BODY, PICK-UP TOOL, 24"	1
24	VA13471	SELF-TAPPING SCREW, M5 x 10	2
25	VA85001	CLAMP, BLADE, 24"	1
26	VV20501	SCREW, M5 x 14, PH	6
27	VA85007	BLADE, 24"	2
28	VA13491	BOLT, M8 x 25	2
29	VA85005	RETAINING RING	4
30	VA85004	AXLE, 2" WHEEL	2
31	VA91345-8	2" WHEEL	2
32	VA14001	RETAINING RING	4
33	VF13516	WASHER, PLAIN, M10 x 30	4
34	VA75011	AXLE, MOUNTING PLATE	1
35	VA75013	AXLE, PEDAL	1
36	VA75012	PEDAL	1
37	VW70204	AXLE, 10" WHEEL	1
38	VW10002	CATCH	1
39	VA13486	RIVET, M4.8 x 14	4
40	GV70041	GASKET, OUTLET	2
41	VA93208A	DRAIN HOSE ASSEMBLY	1
42	VA20101	OUTLET	1
43	VV13635	SCREW, M5 x 20, PH	2
44	GV70034	CLAMP, DRAIN HOSE	1
45	VA21595	CATCH	2
46	VA13461	RIVET, M4.8 x 18	4
47	GV70019	SEAL	2
48	GT13022	NUT, NYLON INSERT, M5	2
49	GV70020A	TANK, 70L	1
50	VW70202	CATCH	1

20 GALLON WET DRY VACUUM ACCESSORIES PARTS LIST



DIA NO	PART NUMBER	DESCRIPTION	NO REQ'D
1	VA20803	DUSTING TOOL	1
2	VA20248	TUBE	2
3	VA20209	WAND	1
4	GV0040-D	DRY PICK-UP TOOL	1
5	GV0040-W	WET PICK-UP TOOL	1
6	VA20207-8	RUBBER BLADES, 400mm	2
7	VA20207-3	CLIP, FLOOR TOOL ADAPTER	1
8	VA20207-2	FLOOR TOOL ADAPTER (38mm)	1
9	VA20806	CREVICE TOOL	1
10	VA20288	HOSE ASSEMBLY	1
11	VA00001	24" FRONT MOUNT SQUEEGEE ASSY	1