



**PACIFIC**<sup>™</sup>  
F L O O R C A R E

**PURPOSE BUILT.**<sup>™</sup>

# **PARTS & OPERATING MANUAL**

## **WDV-18 WET/DRY VACUUM**

**PLEASE READ THIS BOOK**

---

This operator's book has important information for the use and safe operation of this machine. Read this book carefully before starting the machine. Keep this book and tell all operators to read the book. If you do not follow the instructions, you can cause an injury or damage equipment, furniture or buildings.

For new books, please download your copy from our website [www.pacificfloorcare.com](http://www.pacificfloorcare.com) or write to:

***Pacific Floorcare***  
*2259 S. Sheridan Drive*  
*Muskegon, MI 49442-6252*

Carefully inspect all components to ensure that there is no concealed freight damage. If such damage is discovered, file a "CONCEALED DAMAGE REPORT" immediately with the delivering carrier.

The contents of this manual are based on the latest product information available at the time of publication. Pacific reserves the right to make changes or improvements without notice.

**Thank you for purchasing a Pacific Floorcare product. Warranty registration will allow us to better serve you over the lifetime of the product. For quick and easy registration, go to:  
[www.pacificfloorcare.com/Register Product](http://www.pacificfloorcare.com/Register Product).**

# IMPORTANT SAFETY INSTRUCTIONS

## READ AND UNDERSTAND ALL WARNINGS AND INSTRUCTIONS BEFORE USING THIS MACHINE!

### WARNING! To reduce the risk of fire, electric shock, or injury:

1. You must be trained to operate this machine. This machine is to be operated for its intended use only.
2. Do not operate this machine unless it is completely assembled.
3. Always use a three-wire electrical system connected to the electrical ground. For maximum protection against electrical shock, use a circuit that is protected by a ground fault circuit interrupter. Consult your electrical contractor.
4. To prevent electrical shock: Always remove the electrical plug from the electrical outlet before performing any repairs, maintenance or cleanup and when leaving the machine unattended.
5. To prevent electrical shock: Keep the machine surface dry; Do not subject to rain; Store the machine in a dry building area; Clean the machine with a dry cloth only.
6. Machines can cause an explosion when near flammable materials and vapors. Do not use or store this machine with or near fuels, grain dust, solvents, thinners, or other flammable materials. Do not use flammables to clean this machine.
7. Maintenance and repairs must be done by a qualified or authorized person.
8. If the machine is not working as it should, has been dropped, damaged, left outdoors, or dropped into water, bring it to a service center.
9. To avoid damage to the machine's electrical cord, always lift the machine over the cord. Do not run the machine over the electrical cord.
10. Make sure all labels, decals, warnings, cautions and instructions are fastened to the machine.

### Grounding Instructions

This machine must be grounded. If it should malfunction or break down, grounding provides a path of least resistance for electric current to reduce the risk of electric shock. This machine is equipped with a cord having an equipment-grounding conductor and grounding plug. The plug must be inserted into an appropriate outlet that is properly installed and grounded in accordance with all local codes and ordinances.

**WARNING** - Improper connection of the equipment-grounding conductor can result in a risk of electric shock. Check with a qualified electrician or service person if you are in doubt as to whether the outlet is properly grounded. Do not modify the plug provided with the machine. If it will not fit the outlet, have a proper outlet installed by a qualified electrician.

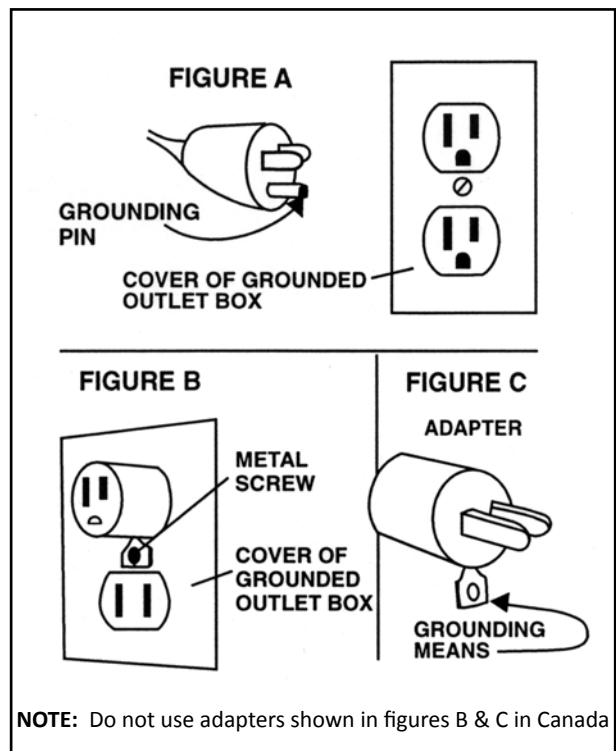
This machine is for use on a nominal 120-volt circuit, and has a grounded plug that looks like the plug illustrated in figure A. A temporary adapter that looks like the adapter illustrated in figures B and C may be used to connect this plug to a 2-pole receptacle as shown in figure B if a properly grounded outlet is not available. The temporary adapter should be used only until a properly grounded outlet (figure A) can be installed by a qualified electrician. The green colored rigid ear, lug, or the like extending from the adapter must be connected to a permanent ground such as a properly grounded outlet box cover. Whenever the adapter is used, it must be held in place by a metal screw.

*NOTE: In Canada, the use of a temporary adapter is not permitted by the Canadian Electrical Code*

#### EXTENSION CORDS

Use only three-wire 16/3 or larger gauge approved extension cords that have three-prong grounding type plugs and three-pole receptacles that accept the appliance's plug. Replace or repair any damaged cords or plugs.

When servicing, refer to authorized person only. Use only identical replacement parts.



# OPERATING PROCEDURES

---

**WARNING!** For the safe operation of this machine follow the instructions given in this booklet and the training given by your supervisor. Failure to do so can result in personal injury and/or damage to machine and property!

**DO NOT OPERATE MACHINE IN AN EXPLOSIVE ENVIRONMENT!**

**WARNING! NEVER USE THIS MACHINE TO PICK UP VOLATILE OR EXPLOSIVE MATERIALS.**

## OPERATION

---

To prepare the machine for operation, make sure it is of the correct voltage and properly assembled. If in doubt, ask your supervisor.

### FOR DRY PICK-UP:

“Dry” refers to material such as dust, dirt, debris and dry foam shampoo.

1. Release the clamp on the side of the tank and head assembly. Lift the head assembly off and set it aside.
2. Then lift the cloth filter assembly out of the collector tank. Clean the cloth filter if needed (reference the “Maintenance” section).
3. Empty the collector tank of all dust and debris. If the debris is wet, empty and dry the inside of the tank thoroughly.
4. Place the cloth filter assembly back into the collector tank. Check for a good seal around the outer filter lip and tank rim.
5. Replace the head assembly and fasten the clamp. Attach the hose, wand and floor tool of choice (reference page 5).
6. Plug the power cord into a 115-volt, 60 cycle grounded outlet.
7. Turn the machine’s motor on by pressing the rocker switch which is located on the head assembly.

### FOR WET PICK-UP:

“Wet” refers to liquids such as water, scrub solutions and detergents; **NOT** volatile or explosive materials.

1. Release the clamp on the side of the tank and head assembly. Lift the head assembly off and set it aside.
2. Then lift the cloth filter assembly out of the collector tank. Store the filter assembly for future, dry pick-up use. **DO NOT REINSTALL.**
3. Empty the collector tank of all dust and debris. Also wipe the inside of the collector tank to remove clinging dust.
4. Check the float shut-off device on the lower portion of the head assembly. The float should have free movement. When the recovered liquid soilage reaches the collector tank capacity, the float will rise to shut off the air flow, stopping the liquid recovery. This prevents damaging overflow and signals the operator when to empty the collector tank.
5. Replace the head assembly and fasten the clamp. Attach the hose, wand and floor tool of choice (reference page 5).
6. Plug the power cord into a 115-volt, 60 cycle grounded outlet.
7. Turn the machine’s motor on by pressing the rocker switch which is located on the head assembly.

## ACCESSORIES

The **Front Mounted Squeegee, #608521**, is included with this model. **Reference Pages 8 & 9 for the squeegee’s illustration and assembly instructions.**

The tool kit (part #608809) is available as an optional accessory.

# MAINTENANCE

---

Good maintenance procedures assure better operation, fewer repairs and longer life to your machine.

**DISCONNECT THE ELECTRICAL PLUG OF THE MACHINE FROM THE ELECTRICAL OUTLET BEFORE DOING ANY CLEANUP, REPAIRS OR MAINTENANCE OF THE MACHINE AND WHEN LEAVING THE MACHINE UNATTENDED.**

**CLEAN THE MACHINE AFTER EACH USE:**

1. **Wipe the outside with a clean cloth.**
2. **Clean the collector tank:** Release the clamps on each side of the tank and head assembly. Lift the head assembly off and set aside. Lift the filter assembly out of the collector tank and set aside. Then wipe the inside of the collector tank with a clean cloth.
3. **Empty and check the filter assembly:** Empty the recovered soilage into a suitable container and shake to remove clinging dirt. Brush the outside of the filter bag to remove embedded dirt. Check the filter assembly for tears or holes; repair or replace if necessary. Install the clean filter assembly into the clean collector tank.

**ELECTRICAL CABLE:**

Check the cord for any nicks, cuts or damage. Report these to your supervisor for correction.

**VACUUM HEAD ASSEMBLY:**

1. **Head Assembly:** Replace and leave ajar if the collector tank is damp to prevent mildew.
2. **Gaskets:** Clean the vacuum head gasket (23) and the float shut-off gasket (24 on page 6).
3. **Float Shut-Off Device:** This should move freely. Remove any debris or strings from the float cage.

**WHEELS AND CASTERS:**

Check these for cuts and nicks. Remove any strings or debris that may restrict the free movement of the wheels. Wipe the treads clean.

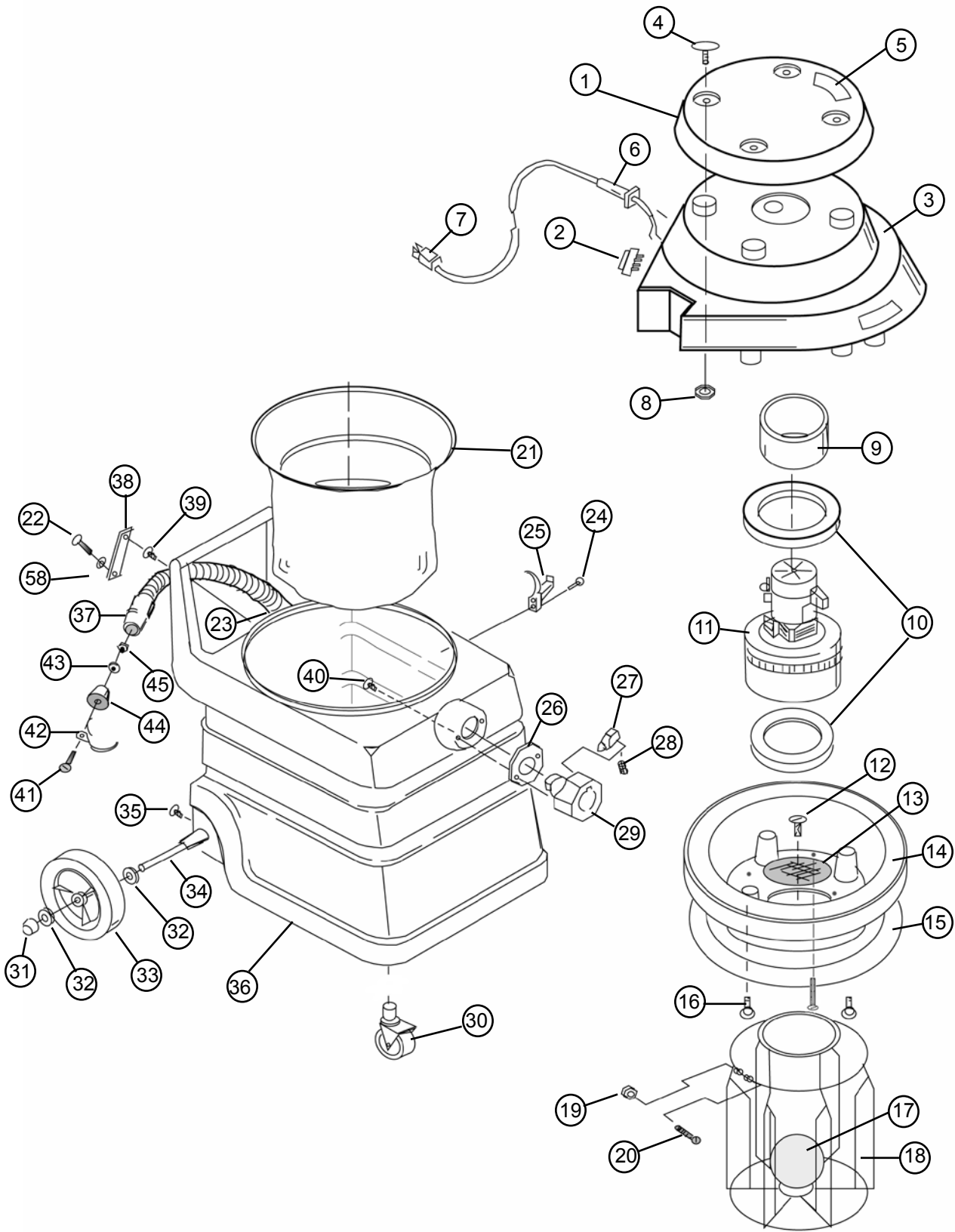
**CARBON BRUSH INSPECTION:**

Check for wear at six month intervals or every 600 hours of operation. The carbon brushes must be replaced if worn shorter than 3/8 inch.

## NOTES

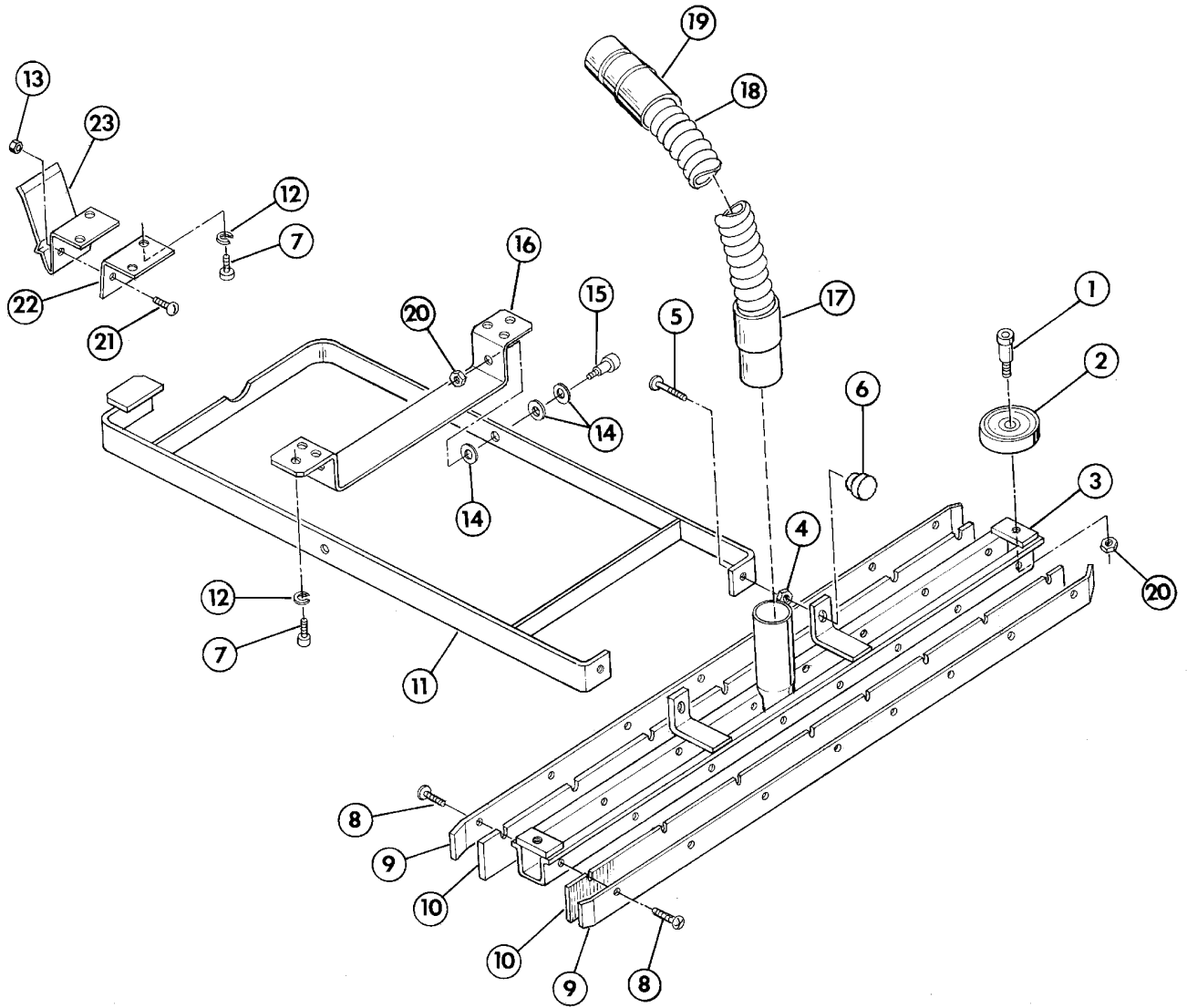
---

# WDV-18 WET/DRY VACUUM



ITEM	PART NO.	DESCRIPTION	QTY
1	602370	Cap	1
2	911089	Switch	1
3	602770	Cover, Motor	1
4	960030	Screw, Motor Cover	4
5	515150	Warning Label	1
6	A13020	Strain Relief	1
7	908104	Power Cord, 14-3x50ft	1
8	W148D	Nut, Cap	4
9	602771	Filter, Air Vent	1
10	603473	Gasket, Motor	2
11	605213	Motor, 115V	1
	200951	Brush, Carbon	2
12	W136D1	Screw, Screen	4
13	608570	Screen	1
14	600272	Adaptor, Tank Head	1
15	603472	Gasket, Head	1
16	962019	Screw 10-32 x 5/8	4
17	603370	Float-Ball	1
18	602471	Cage	1
19	W106D	Nut	1
20	962120	Screw	1
21	600670	Filter Bag Asm.	1
22	962015	Screw	2
23	602012	Clamp, Hose (where hose exits tank)	1
24	930005	Pop Rivet	4
25	605101	Latch	2
26	603415	Gasket, Plastic Cover	1
	603425	Gasket, Foam Adaptor	1
27	607001	Pawl	1
28	608303	Spring	1
29	602415	Coupler Asm, Tank	1
30	619701	Caster, 3" Dia.	2
31	S482P	Snap Axle Cap	2
32	509820	Washer	4
33	609758	Wheel	2
34	607711	Shaft, Wheel	1
35	962109	Screw	1
36	608674	Tank	1
37	604107	Hose, Drain	1
38	608508	Strap	2
39	603313	Fastener	2
40	962112	Screw	2
41	962113	Screw	1
42	602408	Stretch Cord	1
43	W105D	Washer	1
44	608504	Stopper	1
45	920017	Nut	1

# WDV-18 WET/DRY VACUUM - FRONT MOUNT SQUEEGEE ASSEMBLY





ITEM	PART NO.	DESCRIPTION	QTY.
1	960008	Bolt, Shoulder	2
2	609703	Wheel	2
3	608506	Squeegee Channel Weldment	1
4	920019	Nut, 1/4-20 Hex Jam	3
5	962010	Screw, 1/4-20x1 HHCS	2
6	A13018	Knob	2
7	W506D	Screw, 5/16-18x3/4 HH MS	6
8	W380D	Screw, 10-32x3/4 PHP	16
9	607209	Retainer-Squeegee Blade	2
10	600705	Blade, 28" Squeegee	2
11	600301	Arm Weldment-Squeegee	1
12	980006	Washer, 5/16 Lock	6
13	920001	Nut, 10-32 Elastic Stop	2
14	980007	Washer, 5/16 Flat	6

ITEM	PART NO.	DESCRIPTION	QTY.
15	960007	Bolt, Shoulder, 3/8x1/2 Lg	2
16	600806	Bracket, Arm Support	2
17	600205	Adaptor, Hose	1
18	604106	Hose, Vacuum	1
19	600206	Adaptor, Hose	1
20	920012	Nut, 5/16-18 ESNA Lock	4
21	962015	Screw, 10-32x3/8 Pan Hd	2
22	608507	Support, Lock Backup	1
23	605102	Lock, Squeegee Spring	1
24	608201	Spacer, Squeegee Support	2
25	608512	Stop, Squeegee Arm	1
26	W168D	Screw, Set	1
27	962010	Screw, 1/4-20x1 HHCS	1

## MOUNTING INSTRUCTIONS

1. Position the machine on a level surface.
2. Unlock the lower squeegee lift arm weldment (11).
3. Align the squeegee with the lift arm weldment; using the shoulder screws (5) on the back side of the lift arm weldment, place the jam nuts (4) between the arm weldment and squeegee and then screw the knobs (6) on the front of the squeegee assembly. Leave the hardware slightly loose.
4. Position the squeegee assembly to assure that it sits flat from side to side level with the surface. Then tighten the knobs.
5. Connect the vacuum hose assembly, Items 17, 18 and 19 to the tank adaptor and squeegee adaptor.
6. Adjust the squeegee height by rotating the screw (27) clockwise to lower the squeegee and counterclockwise to raise the squeegee.

**WARRANTY POLICY**  
**WET/DRY VACUUM, WDV-18**

The **Pacific Floorcare WDV-18** wet/dry vacuum has been manufactured, tested and inspected in accordance with specific engineering requirements and is **WARRANTED** to be free from defects in workmanship and materials as follows:

Five (5) years parts, One (1) year labor - Polyethylene components

One (1) year parts and labor – All other components unless excluded below.

This warranty extends to the original user/purchaser and only when used, operated and maintained in accordance with **Pacific** Operating and Maintenance instructions.

This warranty does not apply to the following wear parts and accessories of the machine including:

<u>Part Number</u>	<u>Part Name</u>
908104	Cord Assembly
609758	Wheel
619701	Caster
600705	Blade, Squeegee
604106	Vacuum Hose
600670	Filter Bag Assembly
602771	Filter, Air Vent
200951	Carbon Brush, 115V

Nor does it apply to damage or failure caused by improper use, abuse or neglect. Warranty credit or replacement of return parts including motors, etc., is subject to incoming inspection of those items.

To secure repair under this warranty, the following procedure should be taken:

- The inoperative machine or warranted parts must be delivered to the authorized dealer with shipping and delivery charges prepaid. If unable to locate the Dealer, you may contact **Pacific** at the address listed herein for the location of the nearest **Pacific** repair center or agent or for other instructions pertaining to your warranty difficulty.
- Upon compliance with the above warranty procedure, all warranted repairs would be completed at no additional charge or cost to the user.
- Only **Pacific** or its authorized dealers and agents may make no charge warranty repairs on this product. All others do so at their own risk.

This warranty limits **Pacific** liability to the repair of the product and/or warranted parts replacement and does not include incidental or consequential damages arising from the use of a **Pacific** machine whether defective or not.

This warranty is in lieu of all other expressed or implied warranties and is extended to the original purchaser/user.



**PACIFIC™**  
F L O O R C A R E

**PURPOSE BUILT.™**

2259 S. SHERIDAN DRIVE  
MUSKEGON, MICHIGAN 49442-6252  
800-968-1332  
FAX 800-863-9536