

PACIFIC

TRIUMPH HEAT WAVE

Heated Portable Extractor/Spotter

INTRODUCTION

OPERATING & MAINTENANCE INSTRUCTIONS

READ THIS BOOK

This operator's book has important information for the use and safe operation of this machine. Read this book carefully before starting the machine. Keep this book and tell all operators to read the book. If you do not follow the instructions, you can cause an injury or damage equipment, furniture or buildings.

For new books write to:

Pacific Steamex, Inc.
2259 S. Sheridan
Muskegon, MI 49442-6252

Carefully inspect all components to ensure that there is no concealed freight damage. If such damage is discovered, file a "CONCEALED DAMAGE REPORT" immediately with the delivering carrier.

The contents of this manual are based on the latest product information available at the time of publication. Pacific Steamex reserves the right to make changes or improvements to its machines without notice.

FOR YOUR CONVENIENCE, RECORD THE FOLLOWING IMPORTANT INFORMATION:

MODEL _____

SERIAL NUMBER _____

PART NUMBER _____

DATE PURCHASED _____

IMPORTANT SAFETY INSTRUCTIONS

READ AND UNDERSTAND ALL WARNINGS AND INSTRUCTIONS BEFORE USING THIS APPLIANCE!

WARNING! To reduce the risk of fire, electric shock, or injury:

1. Unplug from outlet when not in use and before servicing.
2. Do not use outdoors. Protect the machine from rain.
3. Do not allow to be used as a toy. Close attention is necessary when used by or near children.
4. Use only as described in this manual.
5. Never use this machine to pick up volatile or explosive materials!
6. Do not use this machine for pick up of dust or dry debris.
7. Do not use with damaged cord or plug. If appliance should not work as it should, has been dropped or damaged, left outdoors, or dropped into water, return it to service center.
8. Do not pull or carry by cord, use cord as handle, close a door on cord or pull cord around sharp edges or corners. Do not run appliance over cord. Keep cord away from heated surfaces.
9. Do not unplug by pulling on cord. To unplug, grasp the plug, not the cord
10. Do not handle plug or appliance with wet hands. Do not immerse. Keep the machine in a dry building.
11. Do not put any objects into opening. Do not use with any opening blocked: keep free of dust, lint, hair and anything that may reduce airflow.
12. Keep hair, loose clothing, fingers and all parts of the body away from openings and moving parts.
13. Turn off all controls before unplugging.
14. Do not use in areas where flammable or combustible liquids such as gasoline may be present.
15. Connect to a properly grounded outlet only.
16. Do not use water that is hotter than 140°F (60°C).
17. To prevent damage to the solution system, do not store in freezing temperatures without proper maintenance.

Grounding Instructions

This machine must be grounded. If it should malfunction or break down, grounding provides a path of least resistance for electric current to reduce the risk of electric shock. This machine is equipped with a cord having an equipment-grounding conductor and grounding plug. The plug must be inserted into an appropriate outlet that is properly installed and grounded in accordance with all local codes and ordinances.

WARNING - Improper connection of the equipment-grounding conductor can result in a risk of electric shock. Check with a qualified electrician or service person if you are in doubt as to whether the outlet is properly grounded. Do not modify the plug provided with the machine - if it will not fit the outlet, have a proper outlet installed by a qualified electrician.

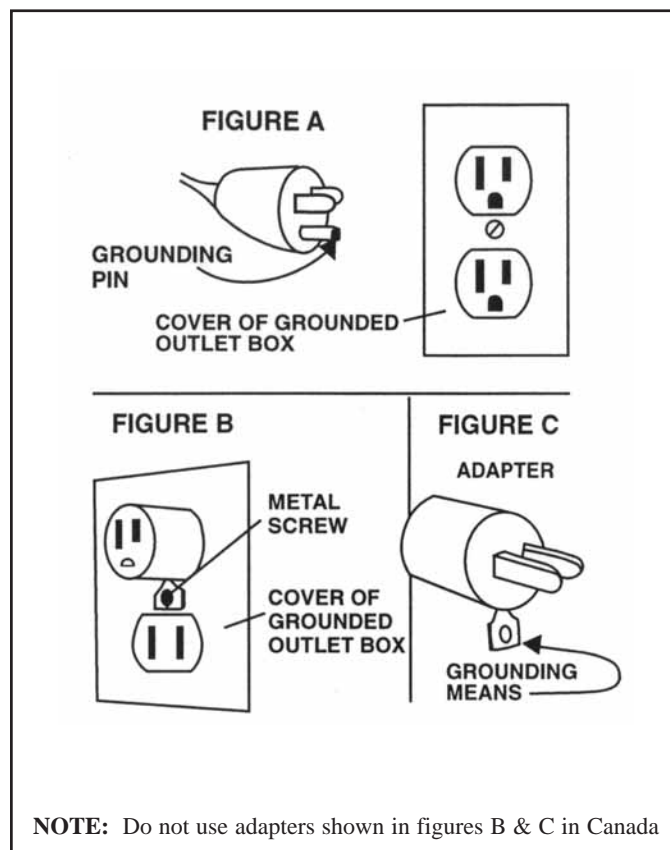
This machine is for use on a nominal 120-volt circuit, and has a grounded plug that looks like the plug illustrated in figure A. A temporary adapter that looks like the adapter illustrated in figures B and C may be used to connect this plug to a 2-pole receptacle as shown in figure B if a properly grounded outlet is not available. The temporary adapter should be used only until a properly grounded outlet (figure A) can be installed by a qualified electrician. The green colored rigid ear, lug, or the like extending from the adapter must be connected to a permanent ground such as a properly grounded outlet box cover. Whenever the adapter is used, it must be held in place by a metal screw.

NOTE: In Canada, the use of a temporary adapter is not permitted by the Canadian Electrical Code

EXTENSION CORDS

Use only three-wire 14/3 or larger gauge approved extension cords that have three-prong grounding type plugs and three-pole receptacles that accept the appliance's plug. Replace or repair any damaged cords or plugs.

When servicing, refer to authorized person only. Use only identical replacement parts.



OPERATING INSTRUCTIONS

WARNING! For the safe operation of this machine follow the instructions given in this booklet and the training given by your supervisor. Failure to do so can result in personal injury and/or damage to machine and property!

DO NOT OPERATE MACHINE IN AN EXPLOSIVE ENVIRONMENT!

NEVER USE THIS MACHINE TO PICK UP VOLATILE OR EXPLOSIVE MATERIALS!

The model shown in this manual is intended for commercial use.

DO NOT OPERATE MACHINE IN AN EXPLOSIVE ENVIRONMENT!



WARNING! Liquid ejected from the spray nozzle could be dangerous due to its temperature, chemical content or pressure.

ASSEMBLY & OPERATION

1. Inspect the machine, hoses and tool for cleanliness and readiness for use.
2. To fill the solution tank with water you must first remove the recovery tank: release the two clamps located at the front and rear of the machine, then grasp the recovery tank handle and pull up. Set the recovery tank to the side.
3. Pour up to 2 gallons of clean, warm water into the solution tank. **Water temperature must not exceed 140°F(60°C).** This unit has a built-in heater that will supply continuous hot water at the spray tip. Add a non-foaming cleaning concentrate for use in extractors at the proportions noted on the container.
4. To reattach the tanks, place the recovery tank on top of the solution tank and fasten the two latches.
5. Attach the solution hose female quick connect fitting to the brass male fitting located on the side of the extractor on the base. Attach the other end of the solution hose to your cleaning tool.
6. Attach the vacuum hose to the vacuum inlet port on the recovery tank and the other end of the vacuum hose to your cleaning tool.
7. Plug the power cord into a grounded wall socket.
8. Turn on the pump (Figure 1, set the switch to the right to turn on both the pump and the vacuum. Setting the switch to the left turns on only the vacuum motor and the middle position is off) and spray through your cleaning tool and heater for a few seconds to fill the lines with water, then turn the switch off.
9. Turn on the heat switch (Figure 1) to allow the heater two minutes to reach operating temperature.
10. Pre-spray the area to be cleaned with a high-quality, non-foaming cleaner mixed to product specifications.

NOTE: If foaming occurs, use a defoaming agent to prevent damage to electrical components. Water damage is not covered by the warranty.

11. Turn on both the pump and vacuum (Figure 1).
12. Begin cleaning by placing the cleaning tool on the spot to be cleaned and pulling the trigger pulling the tool towards you along the spot to vacuum up the moisture. **NOTE:** The machine is equipped with a float shut-off to signal that the recovery tank needs emptying. If suction stops, turn off the machine and empty the recovery tank by repeating steps 2-4. Rinse recovery tank out with clean water.

DAILY OR REGULAR MAINTENANCE

1. Rinse solution and recovery tanks out after every use.
2. If spray jet becomes clogged, remove spray tip, wash thoroughly and blow dry.

PERIODIC MAINTENANCE

1. Periodically inspect all hoses, electrical cable and connections on the machine. Frayed or cracked hoses should be replaced to eliminate vacuum or water pressure loss. Check power cable for damage. Repair or replace damaged cord to prevent fire or electric shock.

PROTECT FROM FREEZING

Do not allow machine to freeze with water in the solution or recovery system. To avoid damage, run pump dry before exposing to freezing temperatures.

If machine is stored for a long period of time in freezing temperatures, completely drain machine of all solution or recovered water. Pour undiluted antifreeze into the solution tank and squeeze hand tool lever until anti-freeze solution is present in the solution system.

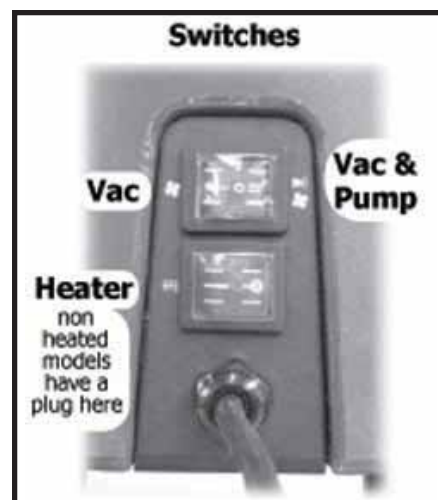
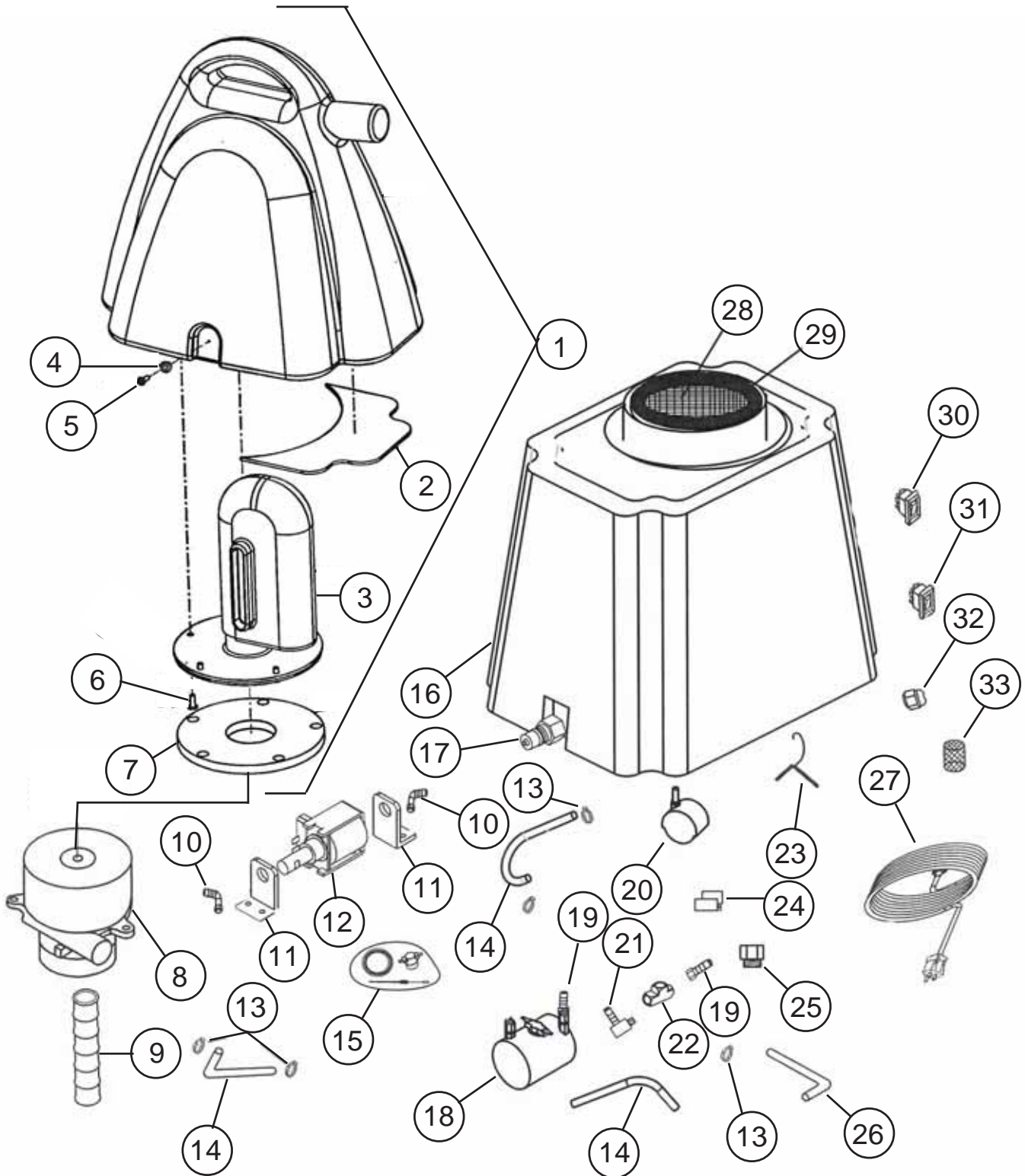


Figure 1

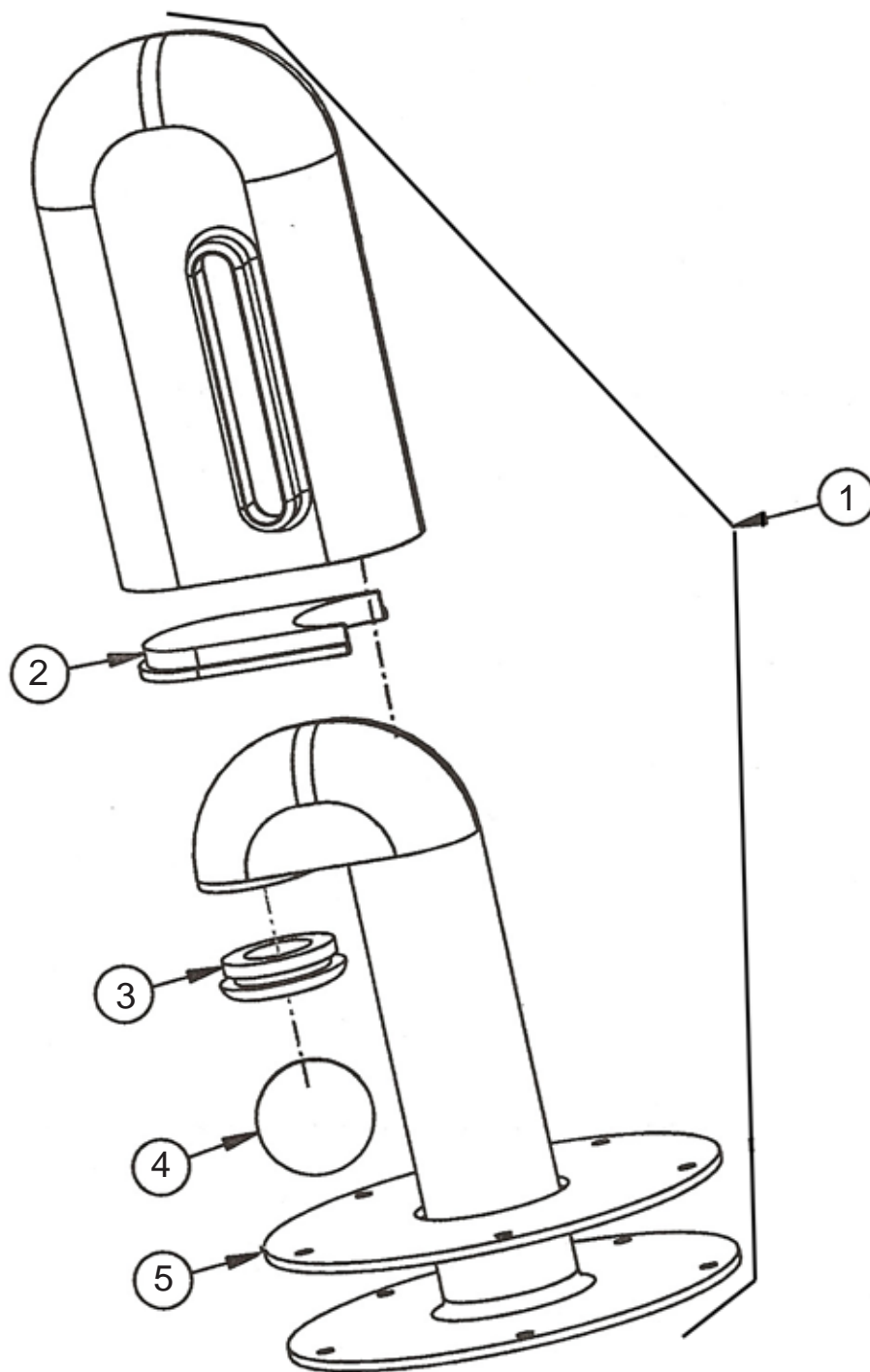
TRIUMPH HEAT WAVE FINAL ASSEMBLY



TRIUMPH HEAT WAVE FINAL ASSEMBLY PARTS LIST

ITEM	PART NO.	DESCRIPTION	QTY.
1	258682	Recovery Tank Assembly, Blue	1
2	253441	Gasket, .125 Ensolite	2
3	253301	Ball & Float Assembly	1
4	255120	Latch w/ Keeper	2
5	962344	Screw, 8-32 x 1/2 FHP Zinc	2
6	962002	Screw, 10-32 x 1/2 Oval Head	5
7	253439	Gasket, .125 Ensolite	1
8	255207	Motor, Vacuum, 2-Stage	1
9	254106	Tube, 1.5" x 13" w/Wire Support	1
10	3770	Elbow, Male, 1/8 to 3/8 Barb	2
11	250808	Bracket, L, Pump	2
12	257003	Pump, 55PSI	1
13	S453P	Clamp, Hose	6
14	214110	Hose, 3/8HP, 12"	4
15	255057	Kit, Heater Repair	1
16	251331	Base Assembly, Heated Spotter	1
	258681	Tank, Solution, Heated Spotter	1
17	203302	Quick Connect, 1/4" Male	1
18	254557	Heater, Complete	1
19	203359	Fitting, Hose Barb, 3/8"	2
20	252412	Caster	4
21	203360	Fitting, Hose Barb, 3/8", 90°	1
22	863305	Fitting, Tee	1
23	255120	Latch w/ Keeper	2
24	258515	Switch, Low Pressure	1
25	S342P	Bushing, Brass, 1/8 FIP x 1/4	1
26	254107	Hose, 1/4HP, 8"	1
27	908116	Cord Assembly, 18/3, 25'	1
28	258513	Screen, Vac Inlet	1
29	253443	Gasket, Vac Inlet	1
30	911597	Switch, Rocker	1
31	258514	Switch, Rocker, Heater	1
32	258506	Strain Relief	1
33	S626P	Strainer, Inlet	1

TRIUMPH HEAT WAVE FLOAT ASSEMBLY



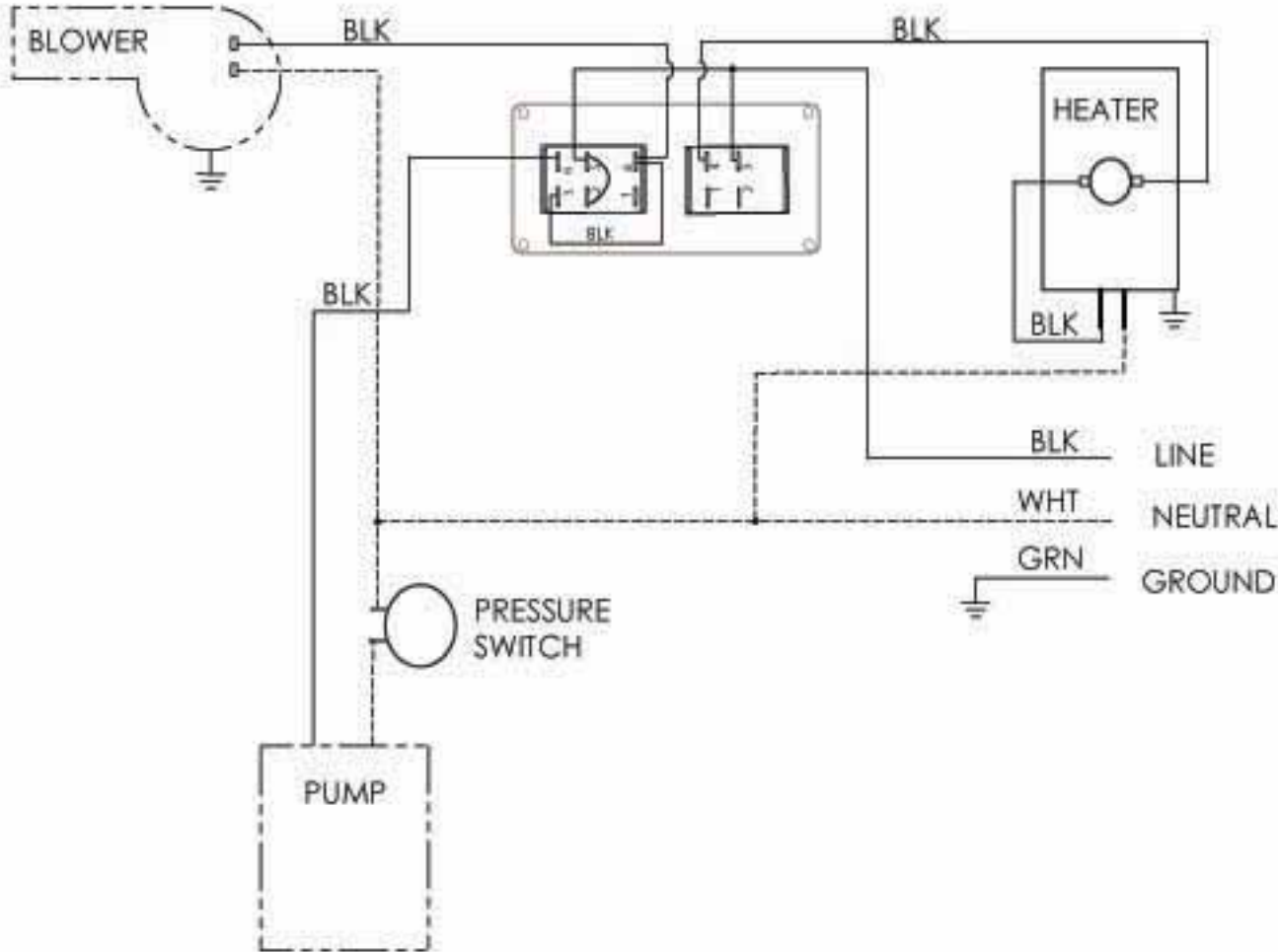
TRIUMPH HEAT WAVE FLOAT ASSEMBLY PARTS LIST

ITEM	PART NO.	DESCRIPTION	QTY.
1	253301	Ball and Float Assm-Complete	1
2	252406	Cap-Ball Float Cup	1
3	253801	Grommet-Float Shut Off	1
4	251308	Ball-Float Shut Off	1
5	253439	Gasket-.125 Ensolite	1

TRIUMPH HEAT WAVE HAND TOOL ASSEMBLY PARTS LIST

PART NO.	DESCRIPTION	QTY.
258807	Hand Tool-4" Aluminum Detail	1
219401	Valve Assembly-400PSI	1
255704	Jet-Spray	1
254141	8' Vac & Sol Hose Assembly	
254122	Hose-Vacuum Assembly 8'	1
S267P6	Cuff-Vac Hose	2
254117	Hose-Solution 8'	1
203308	Quick Connect-Female 1/4"	2
217501	Strain Relief-Pressure	2
S226P	Ferrule	2
S223P	Barb-Brass 1/4 to 1/4 MPT	2
911104	Tie-Cable	4
258101	Sleeve, Vinyl (Covers Quick Connects)	2

TRIUMPH HEAT WAVE WIRING DIAGRAM



WARRANTY POLICY

TRIUMPH HEAT WAVE HEATED SPOTTER/EXTRACTOR

The **Pacific** Triumph Heat Wave has been manufactured, tested and inspected in accordance with specific engineering requirements and is **WARRANTED** to be free from defects in workmanship and materials as follows:

Five (5) years parts, One (1) year labor – Rotational molded tanks.
One (1) year parts & labor – All other components unless excluded below.

This warranty extends to the original user/purchaser and only when used, operated and maintained in accordance with **Pacific's** Operating and Maintenance instructions.

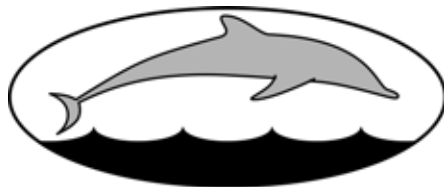
This warranty does not apply to certain wear parts of the machine such as electrical cords, carbon motor brushes, hoses, tools, etc., nor does it apply to damage or failure caused by improper use, abuse or neglect. Warranty credit or replacement of return parts including motors, tools, etc., is subject to incoming inspection of those items.

To secure repair under this warranty, the following procedure should be taken:

- The inoperative machine or warranted parts must be delivered to the authorized dealer with shipping and delivery charges prepaid. If unable to locate the Dealer, you may contact **Pacific** at the address listed herein for the location of the nearest **Pacific** repair center or agent or for other instructions pertaining to your warranty difficulty.
- Upon compliance with the above warranty procedure, all warranted repairs would be completed at no additional charge or cost to the user.
- Only **Pacific** or its authorized dealers and agents may make no charge warranty repairs on this product. All others do so at their own risk.

This warranty limits **Pacific** liability to the repair of the product and/or warranted parts replacement and does not include incidental or consequential damages arising from the use of a **Pacific** machine whether defective or not.

This warranty is in lieu of all other expressed or implied warranties and is extended to the original purchaser/user.



PACIFIC

2259 S. Sheridan • Muskegon, MI 49442
Ph: (231) 773-1330 • (800) 968-1332 • Fax (800) 863-9536
www.pacificfloorcare.com