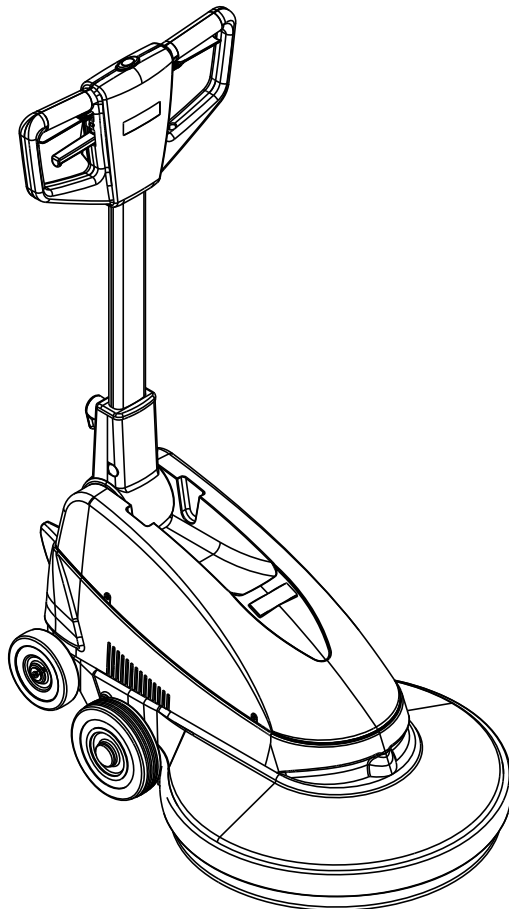


BU500

Parts List



12/2010 revised 4/2016 REV C
Form no. 56042570



Models:
56380063, 56380064 (UK)

<u>DESCRIPTION</u>	<u>PAGE</u>
Base System-BU500.....	2-3
Handle System-BU500	4-5
Wiring Diagram	6
Recommended Spare Parts.....	7
Pad Selector Guide.....	8

WHEN ORDERING PARTS

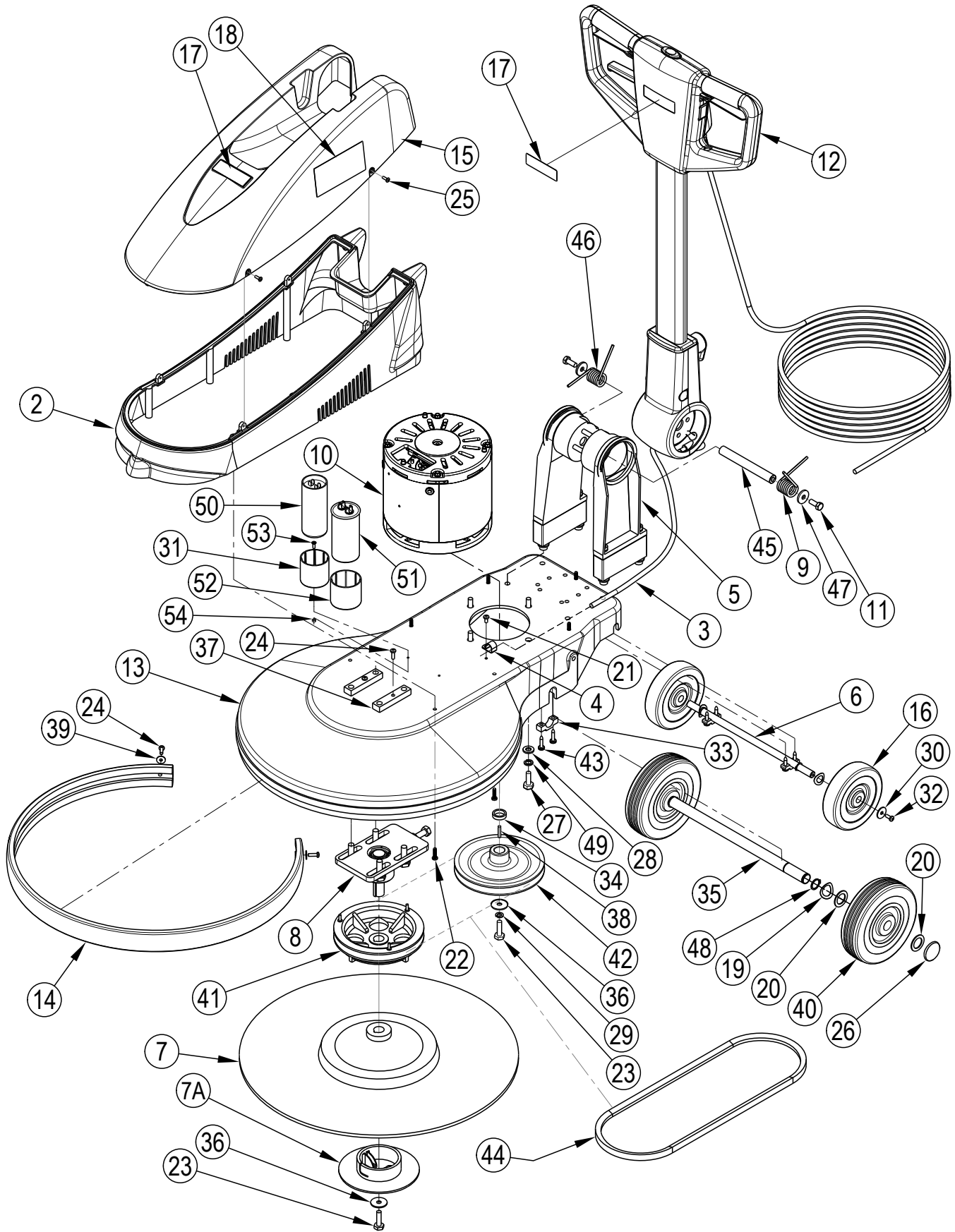
* Use the part numbers from the "Ref. No." columns in this parts list. If the "Ref. No." column is blank; look under the "Kit" column to identify which kit contains the part in question, then use the kit callout, for example "K1", to find the "Ref. No." for that kit.

Kit	Item	Ref. No.	Qty	Description
<u>K1</u>	1		16	Washer Flat 3/16 Zinc Plat
K1	2		2	Screw-BHS-Brass-10-32x3/8-MS
K1	3		3	Washer EPDM 7/32 X 1/8
	4	805	1	Chain-Cover
	5	905	2	Caster Swivel 4 Gray Non MA
K1	6		2	Nut, Hex Nyl Loc 10-24
K1	7		3	Scr- Hex SS 1/4-20 X .75
K1	8		16	Scr, Hex Hd Loc 1/4-20 x .50
K1	9		3	Wsh, Flt SS .260 X 1.000 X .074
	10	56113012	1	Solution Tank
	11	56113034	2	Hinge Plate
<u>K1</u>		<u>56113103</u>	1	Kit-Hardware Solution Tank

* Specify the model and serial number of the machine.

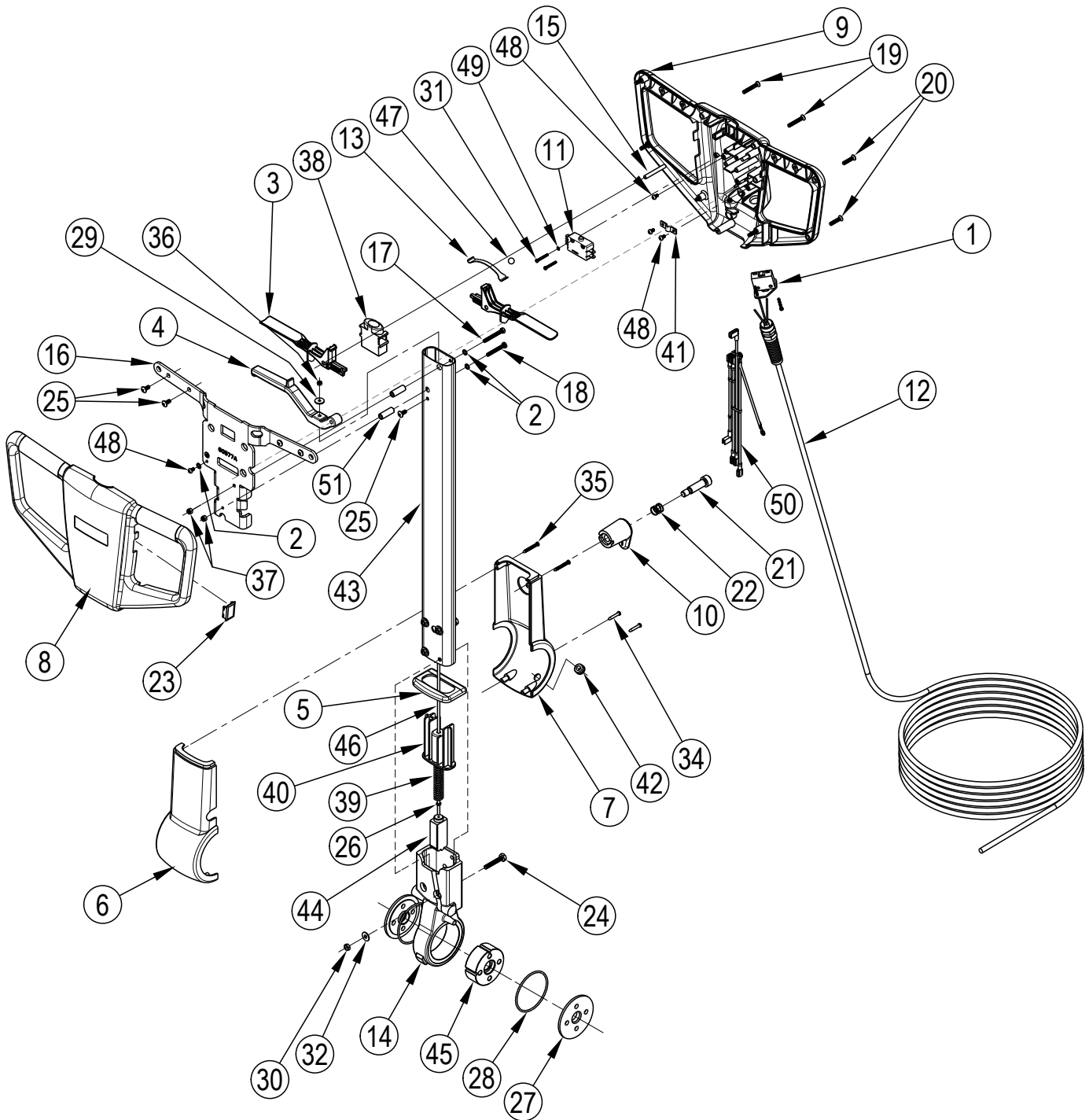
* Use the space below to record the model and serial number for future reference.

Model _____ Serial No. _____



Kit	Item	Ref. No.	Qty	Description	Service Kits			
K2	2		1	Bottom Cover	K1	56381549	1	Nilfisk BU500 Upper Cover Kit
	3	VF45121B	1	Interconnect Cable	K2	56381551	1	Nilfisk BU500 Lower Cover Kit
	4	VV50712	1	Cable Clamp	K3	56381554	1	Burnisher Balance Spring Kit
	5	VF52213	1	Bracket Asm	K4	56381556	1	Main Axle Kit
	6	VF52214	1	Transport Axle Asm	K5	11282A	2	Wheel Kit-160mm
	7	56925A	1	Pad Driver	K6	56381544	1	Nilfisk BU500 Decal Kit
	7A	57369A	1	Retainer, Bottom Half (part of 56925A)				
	8	VF52220	1	Bearing Unit				
K3	9		1	Spring, CW				
	10	YLQ36000	1	Motor 1.1 KW 1500 RPM				
K3	11		2	Scr M8 x 20 Hex				
	12	N/A	1	See Handle System				
	13	20038A	1	Mainframe Gray Burnisher				
	14	30886A	1	Bumper				
K1	15		1	Cover Upper				
	16	VF52017N	2	Wheels Transport 127MM				
K6	17		2	Label Handle Nilfisk				
K6	18		2	Label Nilfisk BU500				
K5	19		2	Washer Bowed 20 mm				
K5	20		4	Washer Flat 20 mm				
	21	VV20509	1	Scr ST 5.0X10 mm				
K2	22		7	Screw M5 X 20-St Ph				
	23	GT13018	2	Bolt				
	24	VA13474	4	Screw				
K1	25		4	Screw				
K5	26	VA96851	2	Wheel Retainer				
	27	VF14006	4	Bolt				
	28	VF13517	4	Washer Flat				
	29	VF13519	1	Washer Lock				
	30	VF13666	2	Washer Flat				
	31	VF72124	1	Capacitor Holder				
	32	VF44012	2	Screw				
K4	33		2	Wheel Clamp Large				
	34	VF52008	1	Spacer				
K4	35		1	Axle Main				
	36	VF52021	2	Washer Fender				
	37	VF52106	2	Riser Front				
	38	ZD40205	1	Key Motor				
	39	VF13474A	2	Washer				
K5	40		2	Wheel 160mm Dia. Gray				
	41	VF52004A	1	Pulley				
	42	VF52009D	1	Pulley Motor				
K4	43		4	Scr M5x20 Self Tapping Cross Recess Pan				
	44	VF14079	1	Belt				
K3	45		1	Shaft				
K3	46		1	Spring, CCW				
K3	47		2	Washer 8mm				
K5	48		2	Ring-Retaining External 19mm (.750)				
	49	VF13518	4	Washer Lock				
	50	VF999849	1	Capacitor Start 100 MFD/300vac				
	51	VF32109	1	Capacitor Run 20 MFD/500vac				
	52	VF74102	1	Capacitor Holder				
	53	VF13490	2	Scr. M4-.7 x 12MM Fit Phillips				
	54	GT13014	2	Nut M4				
	[]	56044601	1	Literature Pack				

[] = Not Shown



2010-12

HANDLE SYSTEM-BU500

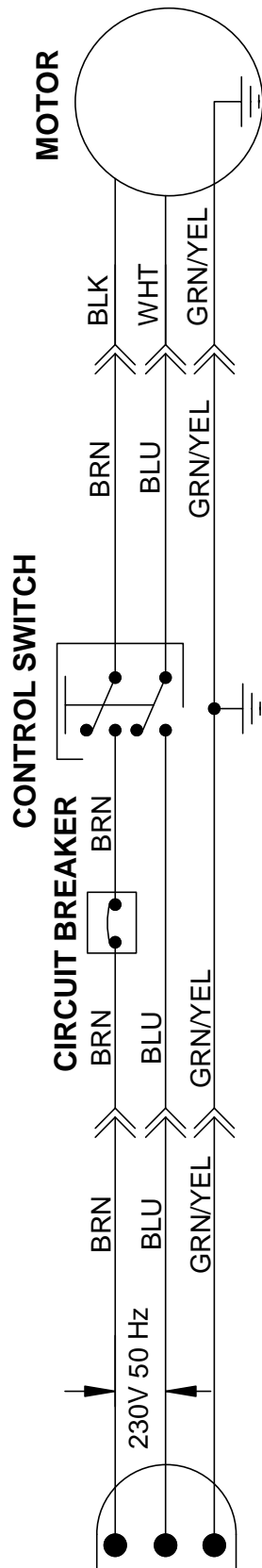
2012-2

BU500**5**

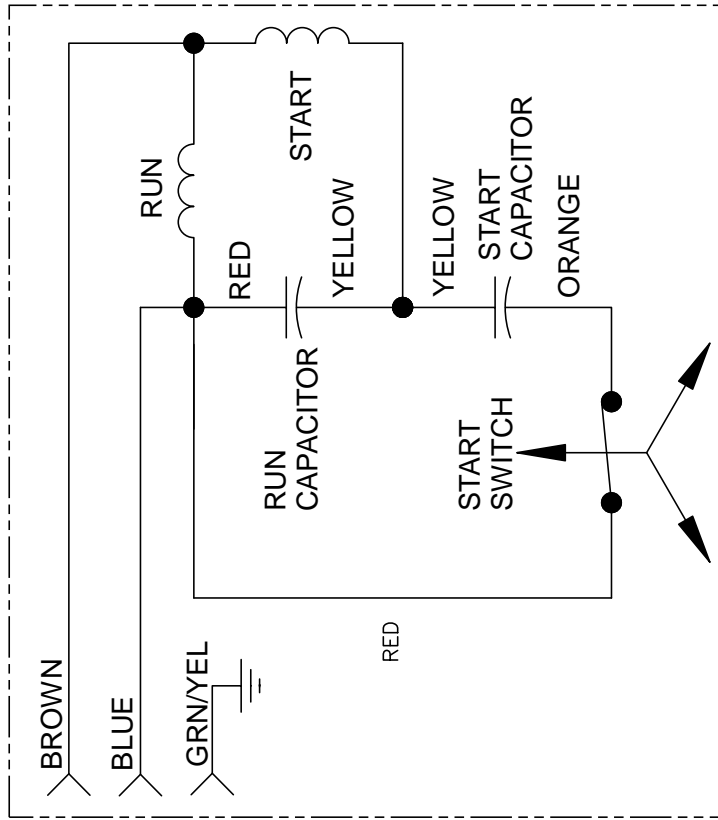
Kit	Item	Ref. No.	Qty	Description
	1	VF99012	1	Circuit Breaker Assembly
K3	2		3	Washer Sh#1210-00
K4	3		2	Lever Switch
K4	4		1	Lever Handle Adjustment
K5	5		1	Cap Rubber
K5	6		1	Cover Front
K5	7		1	Cover Rear
K2	8		1	Cover Handle Front
K2	9		1	Cover Handle Rear
K1	10		1	Hook Cord
	11	40263A	1	Switch DPDT
	12	40268A	1	Electric Cable W/CEE 7/7 (only on 56380063)
		40249A	1	Electric Cable W/BS-1363 (only on 56380064)
K4	13		1	Spring Interlock Button
K7	14		1	Housing Gear Index
K4	15		3	Pin Handle Support
K3	16		1	Handle Support
K3	17		1	Screw M5 X 43 SS Hex Head
K3	18		1	Screw M5 X 40 SS Pan Head Phillips
K2	19		2	Screw M5 X 35 SS Flat Head Phillips
K2	20		6	Screw M5 X 25 SS Flat Head Phillips
K1	21		1	Scr Shoulder 12mm X 35mm, M10-1.5
K1	22		1	Spring 15 Mm X 15 Mm Long
	23	VF54041	1	Handle Plug
K7	24		4	Screw M6 X 40 SS Hex Head
K3	25		5	Screw M5 X 12 SS Truss Head Phillips
K8	26		1	Nut
K6	27		2	Plate-Grooved
K6	28		2	O-Ring
K4,K8	29		1	Washer M4 x 16
K7	30		4	Nut
K4	31		2	Screw M3 X 25 SS Pan Head Phillips
K7	32		4	Washer
	33			Deleted
K5	34		2	Screw St4-1.4 X25 Pan Head
K5	35		2	Screw St4-1.4 X 30 Pan Head
K4,K8	36		1	Nut M4 SS Nylon Insert
K3	37		2	Nut Lock M5 SS Hex
K4	38		1	Button Interlock
K8	39		1	Spring
K7	40		1	Housing Spring Black
K4	41		1	Clamp Cord
K5	42		1	Strain Relief
K7	43		1	Tube Handle
K6	44		1	Gear Handle Adjustment
K6	45		1	Gear
K8	46		1	Plunger Rod
K4	47		1	Ball Interlock 10mm
K4	48		4	Screw, M4 X 8 SS Pan Head Phillips
K4	49		2	Washer M3 External Tooth
	50	56381542	1	Switch Wire Asm
K7	51		2	Support Handle Tube

Service Kits

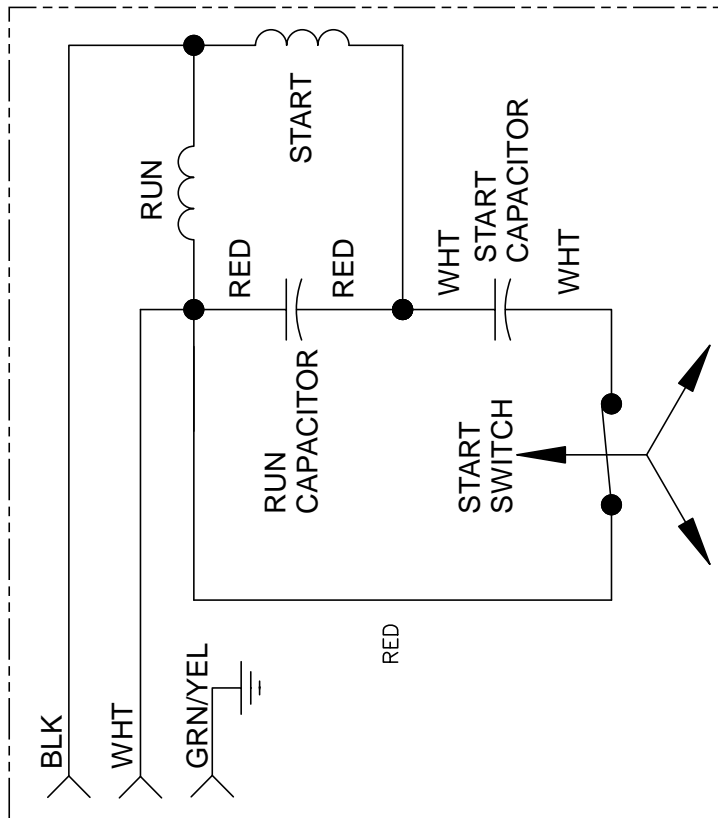
K1	11269A	1	Cord Wrap Kit
K2	11280A	1	Handle Cover Kit Nilfisk
K3	11273A	1	Handle Support Kit
K4	11274A	1	Handle Switch Lever Asm
K5	56381557	1	Gear Housing Cover Kit
K6	56381558	1	Burnisher Gear Set Kit
K7	56381559	1	Gear Housing and Tube Kit
K8	11286A	1	Release Spring and Rod Kit



MOTOR DIAGRAM (new)



MOTOR DIAGRAM (old)



2010-12

RECOMMENDED SPARE PARTS

2012-2

BU500**7****CLASS**

W = Normal Wear

OM = Ordinary Maintenance

EM = Extra-Ordinary Maintenance

PART NO.	QTY	DESCRIPTION	CLASS
-----------------	------------	--------------------	--------------

FINAL ASSEMBLY

40268A	1	Cord, Power	EM
40249A	1	Cord, Power UK	EM

BASE SYSTEM

30886A	1	Bumper	OM
VF14079	1	Belt	OM
VF32109	1	Capacitor Run 20 MFD/500vac	OM
56925A	1	Driver	OM
VF52220	1	Bearing Unit	OM
VF999849	1	Capacitor Start 100 MFD/300vac	OM
56381544	1	Decal Kit Nilfisk	EM
56381549	1	Nilfisk BU500 Upper Cover Kit	EM
56381551	1	Nilfisk BU500 Lower Cover Kit	EM
56381554	1	Burnisher Balance Spring Kit	EM
11282A	2	Wheel Kit	EM
VF52004A	1	Pulley	EM
VF52009D	1	Pulley Motor	EM
VF52017N	2	Wheel	EM
YLQ36000	1	Motor	EM

HANDLE ASSEMBLY

11274A	1	Handle Switch Lever Kit	OM
40263A	1	Main Switch	OM
11269A	1	Cord Wrap Kit	EM
11273A	1	Handle Support Kit	EM
11280A	1	Handle Cover Kit	EM
11286A	1	Release Spring and Rod Kit	EM
56381558	1	Burnisher Gear Set Kit	EM
56381559	1	Gear Housing and Tube Kit	EM
56381557	1	Gear Housing Cover Kit	EM
VF99012	1	Circuit Breaker Asm	EM

PAD SELECTOR GUIDE

2010-12

8**BU500**

Natural Blend (Tan): Natural hair and synthetic fiber pad designed for best mark removal. For use on harder finishes or in high traffic areas. Removes marks and scratches while it polishes.

UHS (Aqua): A superior soft pad that lightly polishes the floor for a reflective appearance.

Natural Blend (White): Natural hair and synthetic fiber pad designed for best gloss. Provides excellent results on a wide variety of floor finishes and traffic conditions.

20" (505 mm) Burnishing Pad Selection Chart (RECOMMENDED)

Part No.	Description	Application	Use	RPM	Color	Finish
976352	Natural Blend HS	Burnish	Dry	1500-3000	Tan	Soft finish/high traffic
976240	UHS Aqua Buffer	Burnish	Dry	1500-3000	Aqua	Wet-look soft finish
976327	Natural Blend HS	Burnish	Dry	1500-3000	White	Glossy finish



Nilfisk A/S
Kornmarksvej 1 · DK-2605 Brøndby · Denmark
Tel.: +45 43 23 81 00 · Fax: +45 43 43 77 00
mail.com@nilfisk.com
www.nilfisk.com

