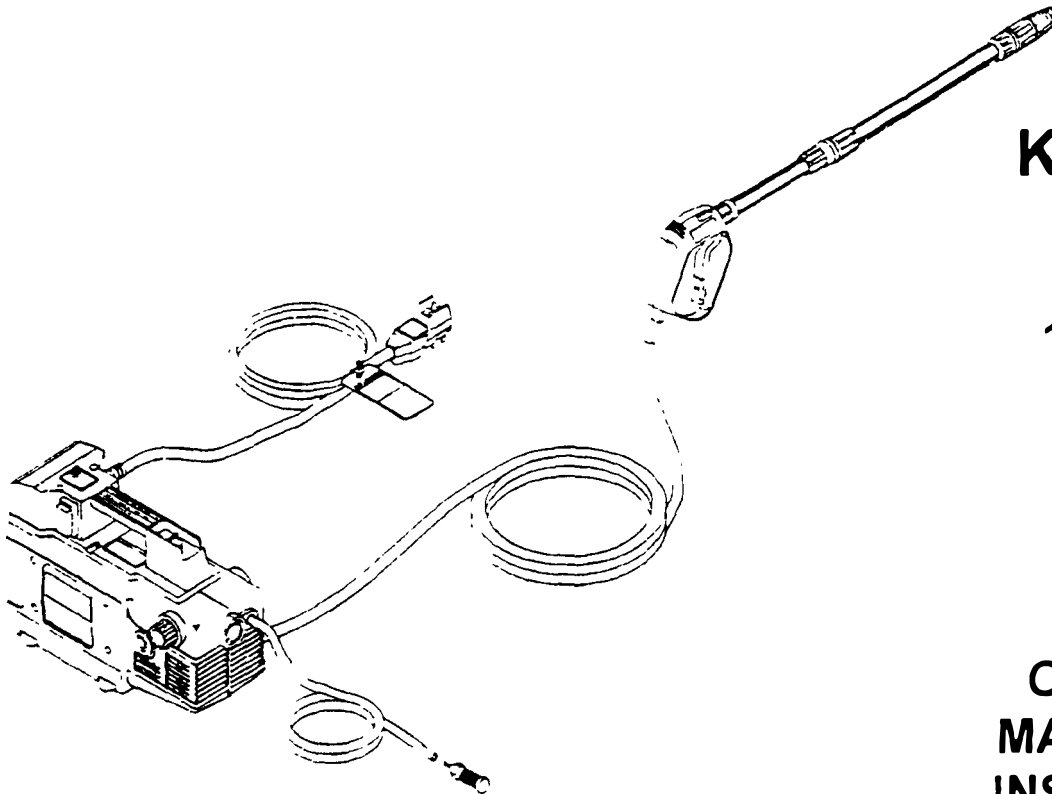


# KENT



MODEL:  
**KW-1015W**  
**PRESSURE**  
**WASHER**  
**120/1 Phase**

## OPERATING, MAINTENANCE INSTRUCTIONS & ILLUSTRATED PARTS LIST

**THE KENT COMPANY**

**P.O. Box 1665**

**2310 Industrial Parkway**

**Elkhart, IN 46515**

**TEL: (219) 293-8861**

**(800) 334-1083**

~~(800) 642-0090 (toll-free)~~

**FAX: (219) 295-8610**

**TELEX: 25-8331 KENT CO EKR**

**JULY, 1995**

This symbol on the nameplate means the product is Listed by Underwriters Laboratories Inc.



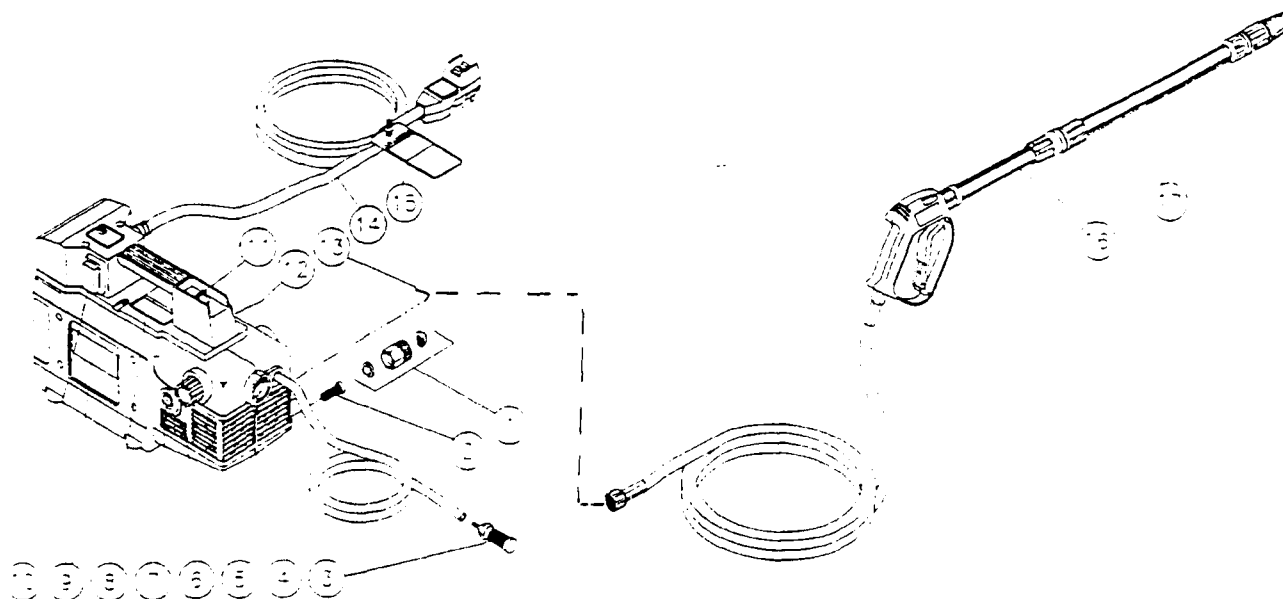
# TABLE OF CONTENTS

INTRODUCTION	3
IMPORTANT SAFETY WARNINGS	4-7
ELECTRICAL PRECAUTIONS	4
SPRAY PRECAUTIONS	5
DETERGENT CLEANING PRECAUTIONS	6
MISCELLANEOUS SAFETY PRECAUTIONS	6
ADJUSTMENT PRECAUTIONS	7
FEATURES & SPECIFICATIONS	8
SAFETY DECALS	9
INSTALLATION & PREPARATION	10-13
ATTIRE	10
SET-UP	10
TRIGGER GUN	10
ADJUSTABLE NOZZLE ASSEMBLY	11
WATER SUPPLY	11
UNLOADER	12
POWER CORD CONNECTION	12
PRE-START INSPECTION PROCEDURES	12
OPERATING INSTRUCTIONS	14-15
PRIMING THE PUMP	14
START-UP	14
CLEANING WITH DETERGENTS	15
SHUTDOWN	15
STORAGE & MAINTENANCE	16-17
GENERAL MAINTENANCE	16
NOZZLE MAINTENANCE	16
WINTERIZING	17
START UP AFTER EXTENDED STORAGE	17
TROUBLESHOOTING	18
NOTES	19
ASSEMBLY & PARTS LIST	20-21
EXPLODED VIEW & PARTS LIST	22-23
GUN ASSEMBLY & PARTS LIST	24-25
WIRING DIAGRAM	26
STATEMENT OF WARRANTY	BACK COVER

# KW-1015W FEATURES

**NOTE:** This drawing is referenced through-out the manual. Locations of specific items will be noted by listing the **REFERENCE #** in parenthesis.

Example: Adjustable Unloader Knob (6)



## FEATURES LISTING

- |  |  |
|--|--|
| 1. Water Inlet                           | 10. On/Off Switch                        |
| 2. Water Inlet Strainer                  | 11. Oil Fill                             |
| 3. Detergent Strainer                    | 12. Decal-Warning: Risk of Electrocution |
| 4. Detergent Hose                        | 13. High Pressure Discharge Hose         |
| 5. Pressure Indicator                    | 14. GFCI Power Cord                      |
| 6. Adjustable Unloader Knob              | 15. Tag-Warning: Risk of Electrocution   |
| 7. Oil Sight Glass                       | 16. Gun w/Screw Lance                    |
| 8. Decal-Warning: Risk of Inject/Explode | 17. Variable Nozzle Assembly             |
| 9. Decal-Caution Statements              |  |

## SPECIFICATIONS

	UNITED STATES	CANADA
Model Number	KW-1015W	KW-1015W
Operating Voltage/Phase / Hz	120/1/60	120/1/60
Amperage	12.5	12.5
Pressure	1000	1000
Flow Rate (gpm/lpm)	2/8	2/8
Maximum Inlet Water Temperature F/C	70°F / 21°C	70°F / 21°C
Power Cord Length	35 foot w/GFCI	35 foot w/GFCI
Pressure Hose Length	23 feet	23 feet
Nozzle Angle	0°-65° Adjustable	0°-65° Adjustable
Lance Length (in/cm)	36" / 91	36" / 91
Motor Horsepower	1.5	1.5
Motor RPM	1725	1725
Pump Style	Triplex Axial Piston	Triplex Axial Piston
Pump Oil Type	SAE 30 Non-Detergent	SAE 30 Non-Detergent
Unit L x W x H (in/cm)	16 x 7 x 10.5 / 40 x 17.7 x 26.6	16 x 7 x 10.5 / 40 x 17.7 x 26.6
Unit Weight	44	44
Shipping Weight	53	53

## INSTALLATION & PREPARATION



### ATTIRE:

1. Proper attire is essential to your safety. It is advised to utilize whatever means necessary to protect eyes, ears, and skin. Additional safety attire (such as respiratory mask) may be required when using detergent cleaning agents with this washer.

### SET-UP:

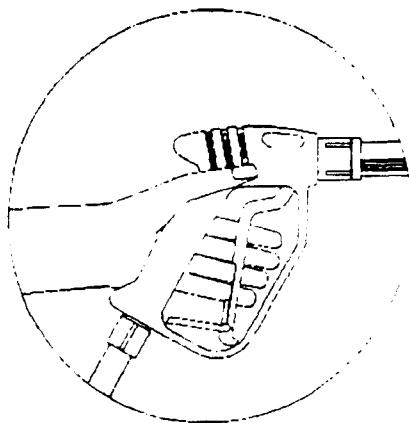
1. This unit should only be placed on a level surface to ensure proper lubrication for the water pump while operating. Do not allow the unit to be exposed to rain, snow or freezing temperatures. NEVER spray water directly on the unit.
2. Before initial use, replace the oil travel plug with the vented plug provided with the unit. Make sure that the oil level is in the center of the oil sight glass. Pump oil level should be checked before each use. If low, fill with SAE 30 non-detergent oil. DO NOT OVERFILL!



### WARNING

#### RISK OF SEVERE INJURY!

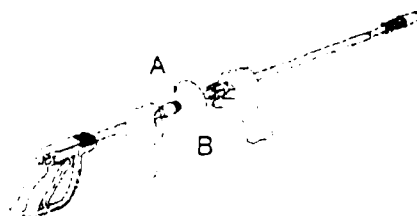
THE TRIGGER GUN SHOULD ALWAYS BE LOCKED IN THE OFF POSITION WHEN NOT IN USE



### TRIGGER GUN:

1. Be certain the trigger gun is locked in the "OFF" position. See WARNING, left.
2. The nozzle assembly should be disconnected from the gun assembly at this time by unscrewing the nozzle/lance assembly from the gun/lance assembly.

DIRECTION "A"=CONNECTION / "B"=DIS-CONNECTION



## INSTALLATION & PREPARATION

### ADJUSTABLE NOZZLE ASSEMBLY

The Adjustable Spray Pattern Nozzle (with lance) has two functions: (NOTE: Nozzle assembly should NOT be connected to the gun assembly at this time.)

1. Selections of high and low pressure can be achieved by pulling the nozzle cover at the end of the wand "TOWARD" yourself for the High Pressure setting, and pushing the nozzle cover "AWAY" from yourself for Low Pressure and detergent application.
2. The spray pattern can be adjusted from 0° to 65° by rotating the nozzle cover at the end of the wand in a clockwise and counter-clockwise direction.



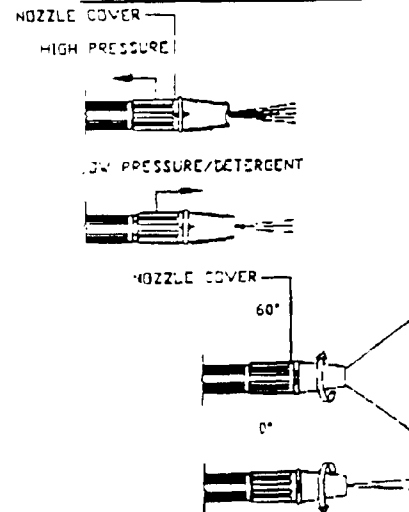
### WARNING

**RISK OF INJECTION CAUSING SEVERE INJURY!**

**NEVER LOOK DIRECTLY AT THE NOZZLE ORIFICE UNLESS IT IS DISCONNECTED FROM THE GUN/WAND ASSEMBLY!**

**WHEN USING THE ADJUSTABLE NOZZLE, NEVER ADJUST THE SPRAY PATTERN WHILE THE TRIGGER GUN IS OPEN!**

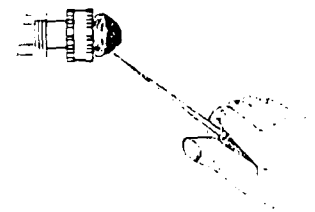
### ADJUSTABLE NOZZLE



### WATER SUPPLY:

1. Select a water supply hose which is a quality grade of garden hose measuring at least 3/4" ID and no longer than 50 feet.
2. Check the water inlet strainer (2) to ensure it is clean and free of any obstructions. Periodic cleaning of the water strainer will help prevent pump problems. As a strainer becomes obstructed, it restricts proper flow of water to the pump. This can result in cavitations which will cause premature failure of pump packings. Using a screw driver, remove the screen; clean or replace. Using a screwdriver, remove the strainer from the unit. Clean, or replace with KENT #M19-0001 if necessary.
3. Connect one end of the water supply hose to the water inlet (1) of the unit. Connect the other end of the hose to your pressurized water supply. **NOTE:** Do not use a non-pressurized water supply (i.e. well or pond water) with this unit.
4. Screw-connect the high pressure discharge hose (13) to the water outlet of the unit.
5. Be certain all connections are securely tightened.
  - a. Water supply hose to the Water Inlet on the unit.
  - b. Water supply hose to Pressurized Water Supply.
  - c. High Pressure Discharge Hose to Water Outlet on the unit.
6. Follow the incoming water requirements listed below:
  - a. Water pressure must be a minimum of 20 pounds per square inch (PSI) and a maximum of 125 PSI. (A typical outdoor faucet will generally supply this PSI if turned completely "ON".)
  - b. Incoming GPM must be approximately one gallon more than the outgoing GPM stated on the pressure washer nameplate. (You can check GPM by timing how long it takes to fill a 5 gallon container.)
  - c. Incoming water temperature must not exceed 70°F/21°C. Excessive pump damage may result if the water temperature exceeds this acceptable level.

### CHECK WATER INLET STRAINER



# OPERATING INSTRUCTIONS

## PRIMING THE PUMP:

1. It is essential to prime the pump on initial start-up and each time the water supply is disconnected from the unit after initial use.
2. Lay the high pressure hose out to release any kinks. Water flow will constrict the hose, creating tight loops if the hose is not straight.
3. Securely connect the gun assembly to the high pressure hose. (NOTE: The nozzle assembly should NOT be connected to the gun assembly at this time. See "Trigger Gun", pg. 10)
4. With the trigger gun locked in the "OFF" position, turn the water supply completely on. Pointing the gun in a safe direction, unlock the trigger gun and squeeze the trigger.
5. Low pressure water will begin flowing from the hose/gun assembly. This allows the unit to prime and purge any air from the system. The unit is primed when water flow is uninterrupted by air.
6. Once the unit is primed, release the trigger and lock the gun in the "OFF" position. Securely connect the nozzle assembly. (See "Trigger Gun", pg. 10)

## START-UP:

1. Refer to the "Safety Precautions" pgs. 4-7 before starting the unit.
2. Find the Safety Decals on your unit and heed the warnings. (8, 9, 12 & 15)
3. With the gun locked in the "OFF" position, point the trigger gun away from yourself or anyone else. Ensure water supply is turned completely on.
4. Disengage the safety lock-off on the gun and squeeze the trigger. Low pressure water will begin flowing from the nozzle. Before starting the unit, brace yourself as the gun will kick-back from the high pressure created by the pump once the unit has started.
5. Press the On/Off Switch to the "ON" position. This switch includes a circuit breaker for protection of the motor. In case of excess load, the circuit breaker will automatically move the switch to the "OFF" position. To restart, push the On/Off Switch again.
6. Once the unit is turned on, perform the following procedures:
  - a. Inspect for system water leaks and oil leaks.  
If a leak is found, **TURN UNIT OFF IMMEDIATELY!**  
Be sure that all damaged parts are replaced and that the mechanical problems are corrected prior to operation of the unit.  
If you require service, contact KENT Customer Service.
  - b. Inspect high pressure hose and electrical cord for kinking, cuts or leaks.  
If a cut or leak is found, **DO NOT TOUCH HOSE OR CORD AT CUT OR LEAK!!! TURN UNIT OFF IMMEDIATELY!** Replace hose or cord before re-starting the unit. See "Miscellaneous Safety Precautions #5, pg. 6. Be sure that all damaged parts are replaced and that the mechanical problems are corrected prior to operation of the unit. If you require service, contact KENT Customer Service.
7. Trigger the gun several times and try adjusting the spray pattern. **Be certain** to LOCK the trigger gun in the "OFF" position whenever moving the adjustable nozzle. **NEVER** look directly into the nozzle! High pressure water creates a risk of severe injury!
8. Because your pressure washer delivers a high pressure spray and a variety of spray patterns, there are many cleaning jobs that can be done without the use of detergents. If a cleaning agent is required, see "Cleaning With Detergents" pg. 15 for the correct procedures.



### WARNING

**RISK OF INJECTION CAUSING SEVERE INJURY!**

**KEEP CLEAR OF NOZZLE!  
NEVER PLACE HAND OR  
FINGERS IN FRONT OF NOZZLE!**

**DO NOT DIRECT DISCHARGE  
STREAM AT PEOPLE OR PETS!**

**BE CERTAIN THE ADJUSTABLE  
NOZZLE ASSY. IS SECURELY  
CONNECTED TO THE WAND TO  
PREVENT AN ACCIDENTAL  
DISCHARGE!**



### CAUTION

**RISK OF DAMAGE.**

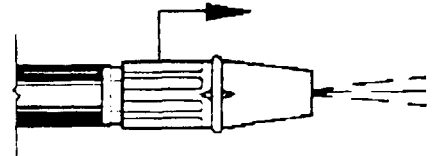
**DO NOT ALLOW SPRAY  
PATTERN TO REMAIN ON A  
FIXED AREA FOR AN EXTENDED  
PERIOD OF TIME. POSSIBLE  
DAMAGE MAY OCCUR TO THE  
AREA.**

# OPERATING INSTRUCTIONS

## CLEANING WITH DETERGENTS:

1. Refer to "Detergent Cleaning Precautions" pg. 6 before working with detergents. Be certain to wear protective safety attire as stated on pg. 10.
2. Prepare detergent solution according to label directions.
3. Connect the detergent hose (4) to the unit as shown on page 8.
4. Immerse the strainer into the detergent solution to allow detergent to siphon.
5. Be certain the water supply is completely turned "ON".
6. With the trigger gun locked in the "OFF" position, push the nozzle cover at the end of the wand away from the trigger gun for low pressure.
7. To apply solution, unlock the trigger gun and squeeze the trigger. In a few moments a detergent/water mixture will exit the low pressure nozzle. Start spraying the lower portion of the surface being cleaned and move up, using long overlapping strokes. Applying from the bottom up helps avoid streaking. Allow to soak briefly. DO NOT allow detergent solution to dry on the surface.
8. To rinse; lock the trigger gun in the "OFF" position, pull the nozzle cover at the end of the wand toward the gun. Unlock the trigger gun and spray. It will take about 30 seconds to purge all detergent from the line. For best rinsing results, start at the top and work down.
9. Siphon a gallon of water through the low pressure detergent injection system after each use. This prevents the possibility of corrosion or detergent residue causing mechanical problems during the next use.

ADJ. NOZZLE DETERGENT



---

## SHUT-DOWN:

1. Move the On/Off switch to the "OFF" position to turn unit off.
2. Turn the water supply "OFF".
3. Pointing the gun in a safe direction, trigger gun momentarily to relieve any trapped pressure. Once pressure is relieved, disconnect the nozzle assembly.
4. Disconnect the unit from the power source.
5. Drain gun, wand and hoses. Once drained, disconnect hoses.
6. Wipe unit clean and store with gun, wand and hoses in a safe area.

## STORAGE & MAINTENANCE

### GENERAL MAINTENANCE:

1. ALWAYS be certain the unit is receiving proper voltage. DO NOT allow electrical cords or connections to lay in water or in such a position where water could come in contact with them.

2. There is a water screen at the water intake on the unit. It should be inspected, removed and cleaned before each use.

3. Never allow the unit to operate without incoming water line attached and the water supply turned all the way on. Incoming water pressure should NOT exceed 125 PSI and incoming water temperature should not exceed 70°F/21°C.

4. Do not allow unit to operate in bypass mode (with trigger closed) for more than three minutes without triggering the gun. Failure to follow this simple rule can cause premature failure of pump packing seals, resulting in costly pump repair.

5. Never spray water directly on the unit or store the unit outdoors where it can be exposed to rain or other adverse weather conditions.

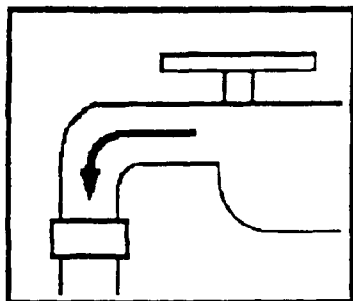
6. Do not store the unit in a freezing environment. This can cause "lock-up" conditions in the water pump. Never pour hot water on a frozen pump; let pump thaw in a warm place. If storage in freezing conditions is necessary, follow the winterizing procedures outlined below.

7. Never pump acids, alkaline, abrasive fluids or solvents through the unit.

8. Do not make repairs while the unit is running.

9. Be cautious when using the straight narrow stream. It is not recommended for use on painted or wood surfaces, OR items attached with adhesive backings.

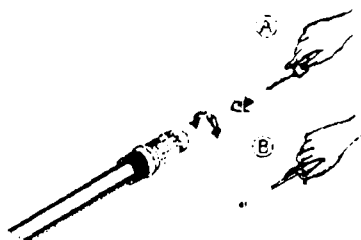
10. Always follow the "SHUT-DOWN" procedures outlined in this manual.



### WARNING

#### RISK OF SEVERE INJURY!

TO PREVENT ACCIDENTAL DISCHARGE, THE ADJUSTABLE NOZZLE/LANCE ASSEMBLY MUST BE DISCONNECTED FROM THE GUN ASSEMBLY WHEN USING THE NOZZLE CLEANER.



### NOZZLE MAINTENANCE

Nozzle orifices should be kept clean and free of obstructions. If the nozzle becomes clogged, the pump pressure will increase causing risk of pump damage. Therefore, should the nozzle become clogged, the nozzle orifice must be cleaned immediately. Follow the procedure listed below to clean nozzle orifice: (See WARNING, left.)

1. Disconnect the wand from the gun.
2. Insert the nozzle cleaner (supplied with unit) into the nozzle and rotate.
3. Flush the nozzle with water.
4. Reconnect the wand and gun assembly.
5. Turn the unit "ON". Point the gun in a safe direction and trigger the gun to begin spraying. Adjust spray pattern to 0°. If spray pattern is still distorted, repeat steps 1-4. If you are unable to thoroughly clean the nozzle using this procedure, then the nozzle must be replaced.

#### To Remove or Replace Adjustable Nozzle:

1. Insert a 2.0mm allen wrench into the nozzle.
2. Rotate the wrench counter-clockwise to remove the nozzle.
3. Inspect the nozzle and clean or replace before re-inserting.

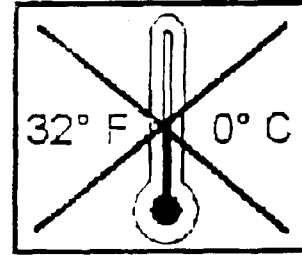


## STORAGE & MAINTENANCE

### WINTERIZING:

1. Always store your unit in an area where the temperature will not fall below 32°F (0°C). The pump in this unit may be permanently damaged if frozen. **FREEZE DAMAGE IS NOT COVERED BY WARRANTY.** If you must store your unit in an area where the temperature may fall below 32°F/0°C, you can protect your unit from the chance of damage by following the procedure outlined below.

1. Gather the following items:
  - a. Blow-down kit KENT #M852-0066.
  - b. Air line with air chuck. (Portable air tanks are available at most rental yards.)
2. Procedure:
  - a. Ensure the water supply hose is disconnected from the water inlet (1) of the unit, and the nozzle assembly (17) is disconnected from the wand assembly.
  - b. Assemble the blowdown valve and connect it to the water inlet of the unit.
  - c. Point the trigger gun in a safe direction and squeeze the trigger. While trigger is open, attach the air line to the blowdown valve to blow water from the system.
  - d. Continue blowing for approximately three minutes.
  - e. Detach the air line and release the trigger gun.
  - f. Remove the blowdown valve from the unit inlet.
  - g. Store the hose, gun and wand with the unit in a safe area.



---

### STARTING UNIT AFTER EXTENDED STORAGE:

#### CAUTION

Prior to restarting the unit, thaw out any possible ice from the wand, gun and hose.

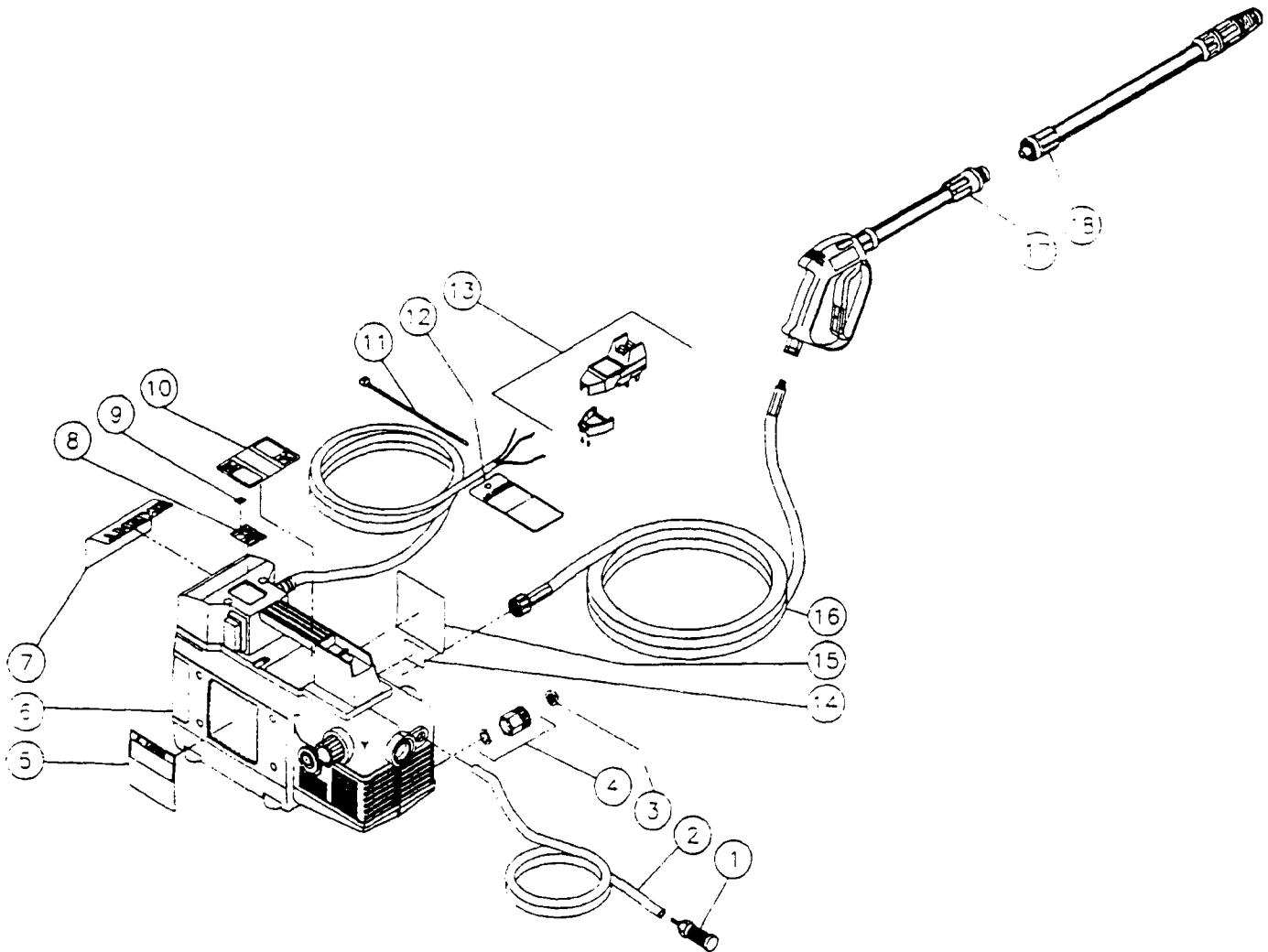
1. **BE CERTAIN** the unit is **NOT** plugged into the power source.
2. Insert a 4mm allen wrench into the motor shaft and rotate to verify the motor turns freely.
3. After following all "PREPARATION" instructions, start the unit momentarily and immediately turn "OFF" to ensure all parts are lubricated before operation.



# TROUBLESHOOTING

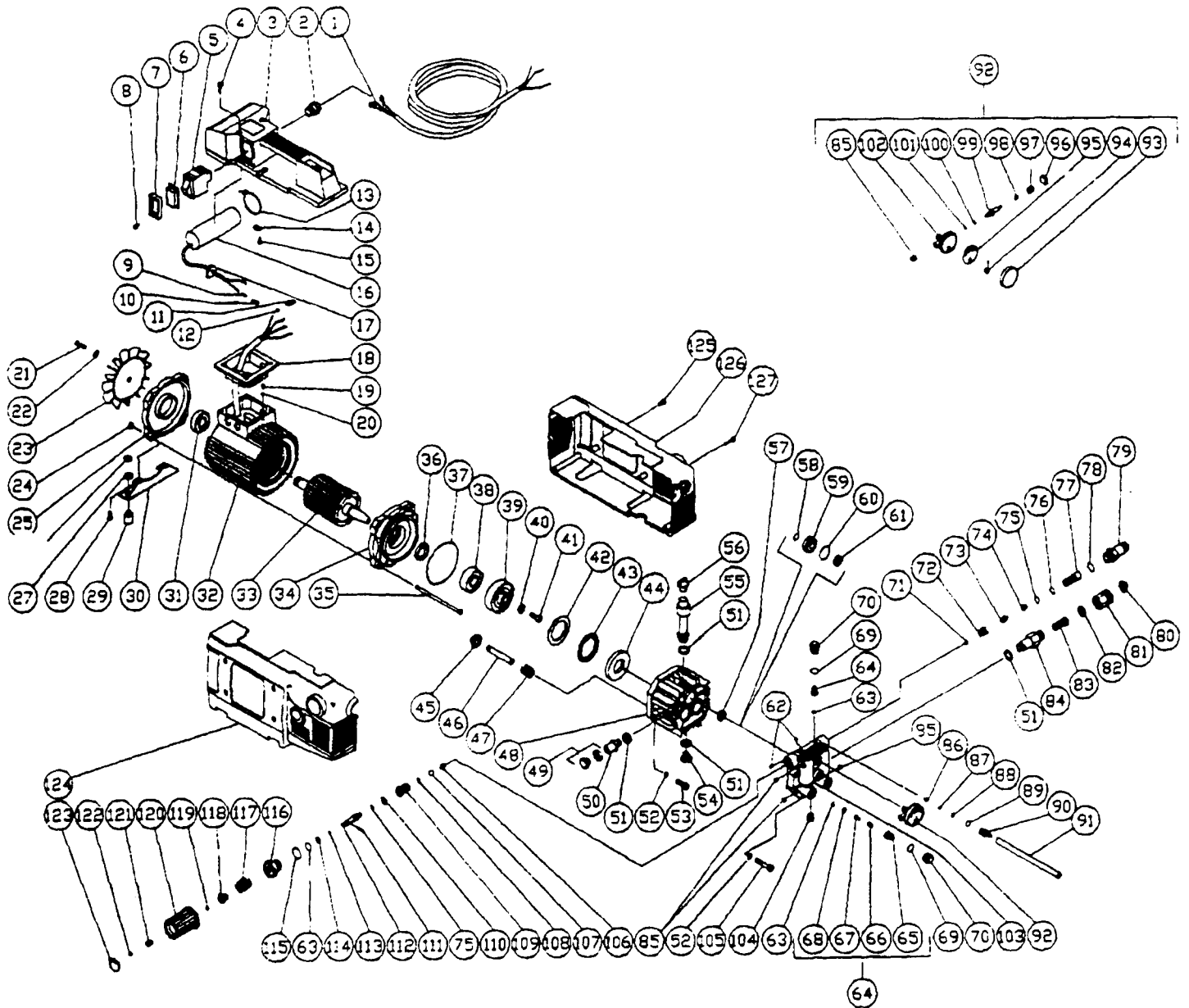
SYMPTOM	PROBABLE CAUSE	REMEDY
Pump motor will not start, or stops while operating	GFCI tripped or was not reset.	Turn unit "OFF". Press GFCI reset button after it has been plugged into the electrical source.
	Tripped circuit breaker or fuse blown in circuit fuse box.	Disconnect all other plugs on the circuit being used and reset circuit breaker OR check and replace fuse.
	Loose or disconnected plug.	Reconnect plug.
	Tripped circuit breaker in unit.	Allow to cool and restart unit.
Circuit breaker trips or fuse blows in fuse box.	Pump pistons stuck.	See "Extended Storage" pg. 17.
	Circuit overload.	Check that the circuit is rated at 15 amps or greater. Disconnect all plugs on the circuit.
	Extension cord is too long or wire is too small.	Use correct electrical requirements as listed on pg. 4.
GFCI trips.	Too much pressure.	Reduce pressure by using pressure adjustment knob.
	Incorrect voltage.	Ensure electrical supply is 120 Volt/15 Amp/60 Hertz/Single-Phase
Motor runs but there is no discharge at nozzle when trigger mechanism is squeezed.	Internal short.	Contact KENT Service Center.
	Inadequate water supply.	Ensure hose is 3/4" diameter and incoming water supply is turned on.
Low or fluctuating pressure.	Kink in water inlet hose or in high pressure discharge hose.	Remove kink.
	Water inlet screen obstructed.	Remove screen, clean or replace.
	Pump sucking air. (Prime eliminated)	Tighten all water intake connections Eliminate leaks in intake line.
	Not in high pressure mode.	Pull nozzle cover toward the gun to engage in high pressure mode.
	Obstructed or worn orifice.	Remove and clean. OR Replace.
	Bypass valve not operating correctly.	Contact KENT Service Center.
Water or Oil leaking from unit.	DO NOT USE!!!!	Contact KENT Service Center.
Water flows from the nozzle when the trigger gun is in the "OFF" position.	Gun is malfunctioning.	DO NOT USE!!! Contact KENT Service Center.
Detergent will not siphon into Low Pressure Detergent mode.	Detergent strainer is not completely submerged in detergent solution	Check; submerge if necessary.
	Detergent hose is obstructed or cut.	Inspect, clean or replace.
	Not in Low Pressure mode.	Push nozzle cover away from gun.
	Nozzle assembly is plugged.	Clean or replace.
	Too many high pressure hose extensions attached to the water outlet.	Use one extension maximum.
	Ball & Spring in Venturi stuck.	Run warm water thru injection line.
	Ball & Spring in Venturi reversed, missing or corroded.	Remove, clean OR Replace.

## ASSEMBLY FOR KW-1015-W



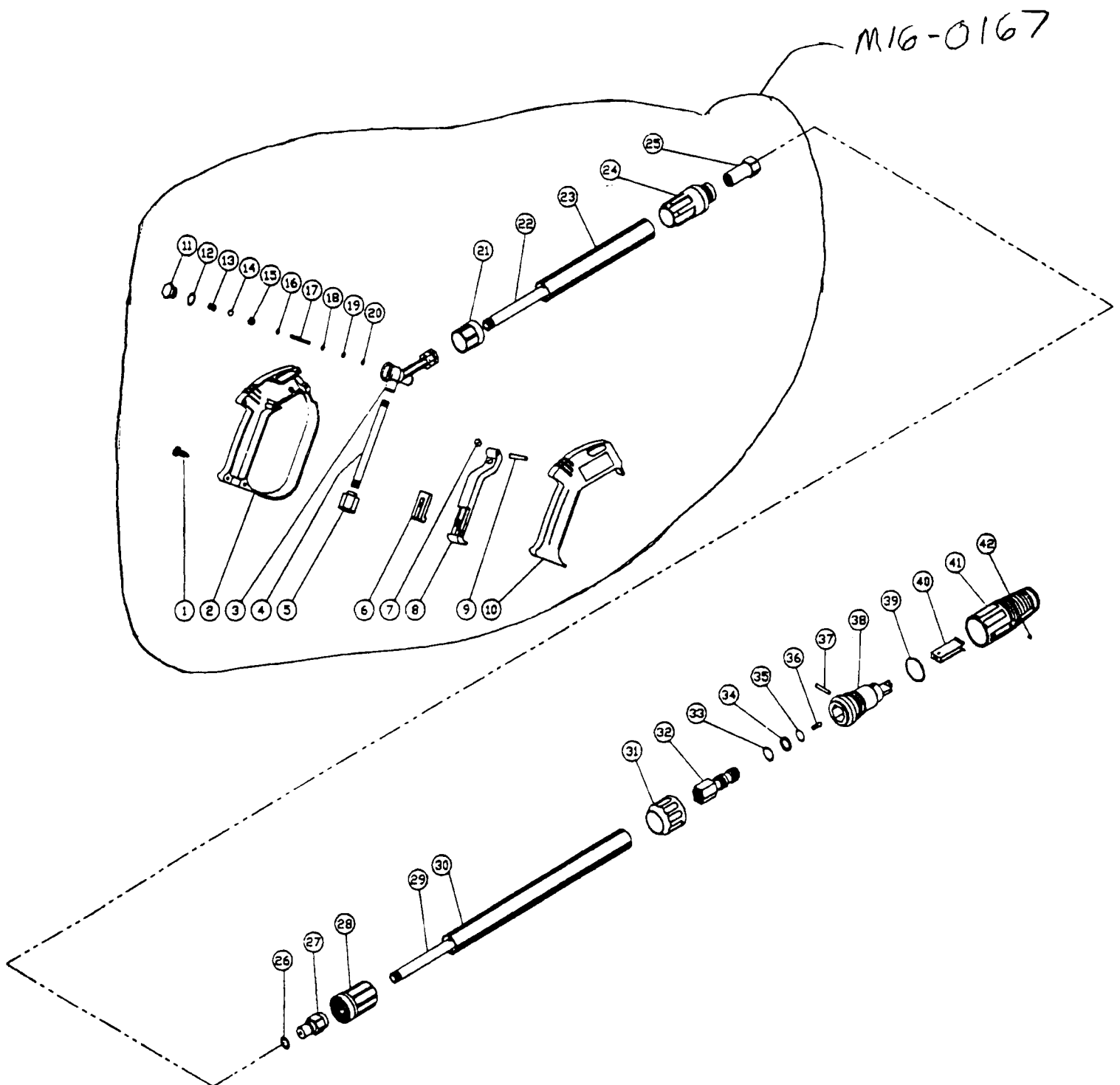
ASSEMBLY FOR KW-1015-W			
REF. #	DESCRIPTION	PART #	QTY.
1	Detergent Strainer	M19-0050	1
2	Detergent Hose	M15-0110	1
3	Filter for Water Inlet	M19-0001	1
4	Water Inlet	M23-0162	1
5	Decal-Caution Statements	M34-0607	1
	Decal-Caution Statements (Bilingual)	M34-0640	1
6	Motor/Pump Assembly	N/A	1
7	Decal-KENT Logo	M34-0496	1
8	Decal-U/L Specs	M34-0615	1
	Decal-U/L Specs (Canada)	M34-0638	1
9	U/L Date Code	N/A	1
10	Decal-Warning: Risk of Inject/Explode	M34-0616	1
	Decal-Warning: Risk of Injection/Explosion (Bilingual)	M34-0639	1
11	Cable Tie	M33-0022	1
12	Hang Tag-U/L Warnings	M34-0605	1
	Hang Tag-U/L Warnings (Bilingual)	M34-0628	1
13	GFCI 15 Amp w/o Power Cord	M32-0364	1
	GFCI 15 Amp w/Power Cord	M32-0352	1
14	Decal-Serial #	N/A	1
15	Decal-Warning Risk of Electrocution	M34-0606	1
	Decal-Warn Risk of Elec (Bilingual)	M34-0464	1
16	High Pressure Hose	M15-0117	1
17	Gun w/Screw Lance 1116-0167	M16-0166	1
18	Variable Nozzle Assembly 1 4 mm	M16-0173	1

# EXPLODED VIEW FOR KW-1015-W



Ref #	Part Number	Qty	Description				
1	M32-0352	1	15 Amp GFCI w/Power Cord	74	~NIA Sep.	1	Injector Nozzle (See PIN M70-0108)
	M32-0364	1	15 Amp GFCI w/o Power Cord	75	~NIA Sep.	2	O-ring (See PIN M70-0108)
2	M9-0051	1	Strain Relief	76	~NIA Sep.	1	O-ring (See PIN M70-0108)
3	M62-0060	1	Handle Assemble	77	~NIA Sep.	1	Injector Bushing (See PIN M70-0108)
4	M27-8196	4	Screw	78	M25-0241	1	O-ring
5	M22-0184	1	Switch 16 Amp	79	M23-0163	1	Outlet Connector
6	~NIA Sep.	1	Switch Protector (See PIN M70-0067)	80	M19-0001	1	Garden Hose Filter (See PIN M70-0068)
7	~NIA Sep.	1	Switch Protector Frame (See PIN M70-0067)	81	~NIA Sep.	1	Garden Hose Conn (See PIN M70-0068)
8	~NIA Sep.	2	Screw (See PIN M70-0067)	82	~NIA Sep.	1	Garden Hose Gasket See
9	~NIA Sep.	2	Electric Connector-Male (See PIN M70-0105)	83	M19-00611	1	Filter Inlet
10	~NIA Sep.	2	Electric Connector Protector Female (See PIN M70-0105)	84	~NIA Sep.	1	Inlet Connector (See PIN M70-0087)
11	NIA	4	Electric Connection Protector-Male	85	M27 -8197	4	Screw
12	NIA	4	Elec. Connector-Female	86	~NIA Sep.	1	Detergent Spring (See PIN M70-0102)
13	~NIA Sep.	1	Plastic Wire Tie (See PIN M70-0105)	87	~NIA Sep.	1	Detergent Ball SS (See PIN M70-0102)
14	~NIA Sep.	1	Clip (See PIN M70-0105)	88	~NIA Sep.	1	O-ring (See PIN M70-0102)
15	~NIA Sep.	1	Screw (See PIN M70-0105)	89	~NIA Sep.	1	O-ring (See PIN M70-0102)
16	M46-0345	1	Capacitor	90	M33-0151	1	HoseBarb
17	~NIA Sep.	1	Grommet (See PIN M70-0105)	91	M15-0110	1	Detergent Hose
18	M26-0165	1	Gasket	92	M22-0181	1	Pressure Gauge Complete (Includes 85, 93-102)
19	M27-8187	1	Screw	93	~NIA Sep.	1	Pressure Gauge Cover (See PIN M22-0181)
20	M28-0061	1	Washer	94	~NIA Sep.	1	Pressure Gauge Indicator (See PIN M22-0181)
21	M27-8864	1	Screw	95	~NIA Sep.	1	Pressure Gauge Dialplate (See PIN M22-0181)
22	M28-1022	2	Washer	96	~NIA Sep.	1	Locknut (See PIN M22-0181 )
23	M52-0043	1	Motor Fan	97	~NIA Sep.	1	Adjusting Screw (See PIN M22-0181)
24	M30-3003	4	Nut	98	~NIA Sep.	1	Spring (See PIN M22-0181)
25	M52-0020	1	Motor Flange-Rear	99	~NIA Sep.	1	Piston (See PIN M22-0181 )
26	M30-3024	4	Nut	100	~NIA Sep.	1	Back-up Ring (See PIN M22-0181 )
27	M28-0132	4	Washer	101	~NIA Sep.	1	O-ring (See PIN M22-0181 )
28	M28-8190	4	Screw	102	~NIA Sep.	1	Body (See PIN M22-0181)
29	M14-0055	4	Rubber Foot	103	M852-0141	1	Pump Manifold
30	M20-0318	2	Angle Support for Motor	104	M27-8198	1	Screw
31	M48-0029	1	Ball Bearing	105	~NIA Sep.	4	Screw (See PIN M70-0088)
32	M52-0022	1	Stator	106	~NIA Sep.	1	Spring (See PIN M70-0047 or PIN M70-0089)
33	M52-0044	1	Rotor	107	~NIA Sep.	1	Ball (See PIN M70-0047 or PIN M70-0089)
34	M52-0025	1	Motor Flange-Front	108	~NIA Sep.	1	O-ring (See PIN M70-0047 or PIN M70-0089)
35	M27-8188	4	Screw For Motor	109	~NIA Sep.	1	Valve Seat (See PIN M70-0047 or PIN M70-0089)
36	M25-0244	1	Oil Seal for Motor	110	~NIA Sep.	1	Back-up Ring (See PIN M70-0047 or PIN M70-0089)
37	M25-0243	1	O-ring	111	~NIA Sep.	1	Roll Pin (See PIN M70-0047 or PIN M70-0089)
38	M48-0033	1	Bell Bearing	112	~NIA Sep.	1	Piston Bypass Valve (See PIN M70-0047 or PIN M70-0089)
39	M52-0026	1	Wobble Plate for Motor	113	~NIA Sep.	1	O-ring (See PIN M70-0047 or PIN M70-0089)
40	M28-0133	1	Washer for Motor	114	~NIA Sep.	1	Back-up Ring (See PIN M70-0047 or PIN M70-0089)
41	M27-8195	1	Screw for Motor	115	~NIA Sep.	1	O-ring (See PIN M70-0047 or PIN M70-0089)
42	M48-0035	1	Bearing Disk-Rear	116	~NIA Sep.	1	Body By-pass Valvet (See PIN M70-0047 or PIN M70-0089)
43	M48-0030	1	Bearing	117	~NIA Sep.	1	Pressure Regulator Spring (See PIN M70-0047 or PIN M70-0089)
44	M48-0032	1	Bearing Disk-Front	118	~NIA Sep.	1	Pressure Regulator Screw (See PIN M70-0047 or PIN M70-0089)
45	M46-0362	3	Piston Spring Retainer	119	~NIA Sep.	1	Snap Ring (See PIN M70-0047 or PIN M70-0089)
46	M46-0363	3	Piston	120	~NIA Sep.	1	Knob (See PIN M70-0047 or PIN M70-0089)
47	M49-0081	3	Piston Spring	121	~NIA Sep.	1	Screw (See PIN M70-0047 or PIN M70-0089)
48	M48-0031	1	Pump Housing	122	~NIA Sep.	1	Set Screw (See PIN M70-0047)
49	~NIA Sep.	1	Oil Sight Glass (See PIN M70-0082)	123	M7-0088	1	Cap
50	~NIA Sep.	1	Oil Sight Glass Support (See PIN M70-0082)	124	M62-0062	1	Right Cover
51	M26-0168	4	Gasket	125	M27 -8863	8	Screw
52	M29-0154	8	Lockwasher	126	M62-0061	1	Left Cover
53	M27-8194	4	Lockwasher	127	M27-8193	4	Screw
54	~NIA Sep.	1	Oil Drain Plug (See PIN M70-0083)		M70-0001		Oil Seal Kit (Includes 3 each 57)
55	M46-0351	8	Oil Tube Extension		M70-0047		Unloader Assy (Includes 63, 71, 73)
56	M39-0066	1	Oil Fill Cap		M70-0067		Switch Cover (Inc 6-8)
57	~NIA Sep.	3	Oil Seal (See PIN 70-0001 )		M70-0068		Garden Hose Swivel (Inc 80-82)
58	~NIA Sep.	3	O-ring (See PIN M70-0118 or PIN M70-0084)		M70-0081		Oil Tube Assy (Inc 51 & 55)
59	~NIA Sep.	3	Packing Retainer (See PIN M70-0084)		M70-0082		Oil Sight Glass (Inc 46-51 )
60	~NIA Sep.	3	O-ring (See PIN M70-0118 or PIN M70-0084)		M70-0083		Oil Drain Plug (Inc 51 & 54)
61	~NIA Sep.	3	Pressure Seal (See PIN M70-0118 or PIN M70-0084)		M70-0084		Pump Packings (Inc 1 ea 58-61)
62	M27 -8821	2	Screw		M70-0086		Valve Assy (Inc 6 each 63 & 64)
63	~NIA Sep.	7	O-ring (See PIN M70-0086)		M70-0087		Pump Inlet Assy (Inc 51 & 84)
64	~NIA Sep.	6	Valve Complete (Includes 65-68) (See PIN M70-0086)		M70-0088		Manifold Bolts (Inc 4 ea. 52 & 105)
65	~NIA Sep.	6	Valve Cage (See PIN M70-0086)		M70-0089		Manifold Assy (Inc 51, 58-64, 69-90, 103, 104, 106-123)
66	~NIA Sep.	6	Valve Spring (See PIN M70-0086)		M70-0102		Injector Repair Kit (Inc 86-89)
67	~NIA Sep.	6	Valve (See PIN M70-0086)		M70-0105		Capacitor Assy (Inc 9, 10,13-17)
68	~NIA Sep.	6	Valve Seat (See PIN M70-0086)		M70-0108		Unloader Check Check Valve (Inc 71-77)
69	~NIA Sep.	6	O-ring (See PIN M70-0145)		M70-0118		Pump Packing (Inc 3 ea. 58,60,61)
70	~NIA Sep.	6	Valve Plug (See PIN M70-0145)		M70-0145		Valve Cap Assy (Inc 69-70)
71	~NIA Sep.	1	O-ring (See PIN M70-0108)				
72	~NIA Sep.	1	Check Valve (See PIN M70-0108)				
73	~NIA Sep.	1	Check Valve Spring (See PIN M70-0108)				

# GUN ASSEMBLY FOR KW-1015-W

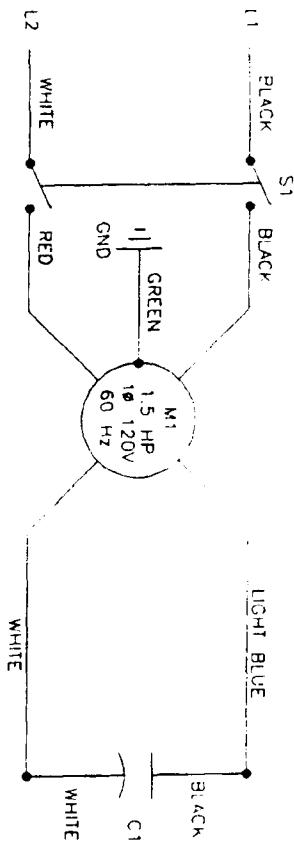
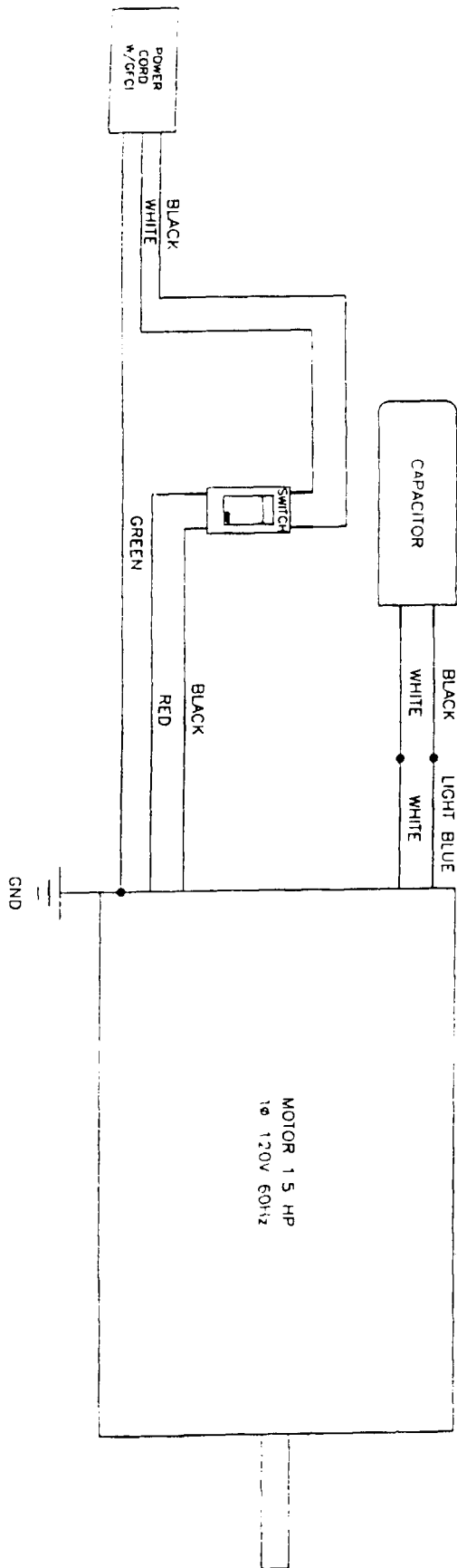


**M16-0167**  
**GUN (M16-0166) & WAND (M16-0173) ASSEMBLY FOR KW-1015-W**

REF. #	DESCRIPTION	PART #	QTY.	REF. #	DESCRIPTION	PART #	QTY.
1	Screw	M27-8382	7	24	Plastic Screw Connector-Male	M16-0181	1
2	Plastic Housing (Left side)	M16-0189	1	25	Quick Connect-Female	M17-0031	1
3	Housing-Brass	M23-0183	1	26	O-ring	M25-0259	1
4	Pipe	M21-0095	1	27	Quick Connect-Male	M17-0032	1
5	Coupler	M23-0173	1	28	Plastic Screw Connector-Female	M16-0183	1
6	Trigger Safety Lock	M16-0188	1	29	Pipe	M21-0096	1
7	Trigger Rest	M16-0186	1	30	Wand Protector	M62-0092	1
8	Trigger	M16-0187	1	31	Collar	M16-0326	1
9	Trigger Pin	M43-0069	1	32	Nozzle Body	M18-0300	1
10	Plastic Housing with Warning (Right Side)	M16-0185	1	33	O-ring	M25-0345	1
11	Plug (See Kit M70-0057)	N/A Sep.	1	34	Back-up Ring	M25-0344	1
12	O-ring (See Kit M70-0057)	N/A Sep.	1	35	O-ring	M25-0343	1
13	Spring (See Kit M70-0057)	N/A Sep.	1	36	Nozzle 1.40 mm	M18-0227	1
14	Ball (See Kit M70-0057)	N/A Sep.	1	37	Pin	M43-0083	1
15	Seat (See Kit M70-0057)	N/A Sep.	1	38	Housing	N/A	1
16	O-ring (See Kit M70-0057)	N/A Sep.	1	39	O-ring	M25-0342	1
17	Pin (See Kit M70-0057)	N/A Sep.	1	40	Nozzle Angle Plate	M18-0283	1
18	Washer (See Kit M70-0057)	N/A Sep.	1	41	Nozzle Protector	M18-0301	1
19	O-ring (See Kit M70-0057)	N/A Sep.	1	42	Identification Pin	M18-0290	1
20	Back-up Ring (See Kit M70-0057)	N/A Sep.	1		Gun w/Screw Lance (Includes items 1-25)	M16-0166	1
21	Gun/Wand Connector	M16-0182	1		Gun Repair Kit (Includes items 11-20)	M70-0057	1
22	Pipe	M21-0089	1		Variable Nozzle Assy. (Includes 26-43)	M16-0173	1
23	Wand Protector	M62-0063	1	Must order M16-0166 & M16-0173 for complete Gun & Wand Assembly			



# WIRING DIAGRAM



# THE KENT LIMITED WARRANTY

Your Kent equipment which has been manufactured, tested and inspected in accordance with carefully specified engineering requirements, is warranted to be free from defects in material and workmanship. This warranty is, however, subject to the following qualifications, conditions and limitations which are set forth to provide you and all users of the Kent equipment with information concerning the duration, extent, availability and applicability of this Kent limited warranty, the procedure to be taken to obtain its performance and other information concerning the Kent warranty policy.

The Kent Limited Warranty is extended to the original end user as follows:

KW Series pressure washers 1 year parts replacement and service labor warranty. Normal wear parts including hoses, gaskets, pump seals and nozzles guaranteed against defects for a period of 90 days from date of sale. Honda engines are warranted by American Honda Co., Inc. for a period of 1 year.

Replacement parts guaranteed for 90 days from date of installation against defects in material and workmanship.

The 10 year poly component replacement warranty with 1 year service labor extends for a period of ten (10) years from the date of the original purchase of the Kent equipment by the original purchaser. This warranty will not cover damage attributable to the following:

- (1) Improper, unreasonable or negligent use or abuse of the equipment.
- (2) Use of equipment with hot water or high temperature above 130 degrees Fahrenheit (54 degrees Centigrade).
- (3) "Warping", "Creeping", or "Distortion" of part so long as the same does not interfere with normal operation.
- (4) Abrasions or punctures of the equipment.

The start date of the warranty coverage shall be the purchase date of the original end user or 1 year from the date the machine was shipped from the factory, whichever come first. Proof of purchase will be required.

## PARTS OF KENT EQUIPMENT NOT COVERED BY WARRANTY

Certain parts of Kent equipment require replacement in the ordinary course of use due to normal wear by reason of their characteristics. These are normal wear items such as cords, gaskets, switches, bumpers, carbon brushes, handle grips, bags, hoses, bearings, etc.

## EXCEPTIONS AND EXCLUSIONS FROM WARRANTY

This equipment is required to be used on electric current as indicated on the data plate. Otherwise damage, defects, malfunctions or other failures of the equipment arising from use on electric current not as indicated are excepted and excluded from this warranty. Defects, malfunctions, failure or damage of the equipment caused by improper, unreasonable or negligent use or abuse other than those designated as authorized to perform such work without first having obtained factory instructions, The Kent Company, at its sole option, may determine that this warranty will not apply and that reimbursement for such repair will not be made because of the failure to comply with such factory specified instructions.

## PROCEDURE TO BE TAKEN TO OBTAIN PERFORMANCE OF WARRANTY REPAIR

To secure repair of the equipment or any warranted parts under this warranty, the following procedure should be taken. The inoperative equipment or warranted parts, together with satisfactory evidence of the purchase date, must be delivered, with shipping and delivery charges prepaid, to one of the following:

- (1) The dealer from whom purchased;
- (2) Any Kent distributor's service department in the United States;
- (3) Any Kent authorized service station in the United States.

If you are unable to locate any of the foregoing, you may write or otherwise communicate with The Kent Company for instructions before repair service is performed by anyone else. In such event, The Kent Company will provide either the location of a closely available Kent distributor service department or Kent authorized service station or other factory instructions. Upon compliance with the above procedure, all warranted defects will be repaired, at no additional charge or costs to the customer, and the repaired product returned to the customer, with all shipping and delivery charges prepaid. In following the procedures above set forth, PLEASE MAKE CERTAIN to state the Kent model, type and serial number as shown on the data plate of the equipment.

## REPLACEMENT

In the event of a defect, malfunction or failure of your Kent equipment or any warranted part to conform with this warranty, The Kent Company may, at its sole option and own expense, replace the equipment or any warranted part with another new identical or reasonably equivalent model or part in lieu of repairing the defect.

## NO REFUND OF PURCHASE PRICE

The Kent Company will not, as a matter of its warranty policy, refund the customer's purchase price.

## WARRANTY REGISTRATION CARD FOR YOUR KENT EQUIPMENT AND INFORMATION REQUEST

Your Kent Company distributor from whom you purchased your equipment is responsible for the registration of your warranty with the factory. We ask that you cooperate with your distributor in supplying the necessary information on the warranty card so that we may better serve you. Any information or questions you may have concerning your Kent equipment or this warranty may likewise be secured from the factory. This warranty gives you specific legal rights, and you may also have other rights which vary from state to state.

THE KENT COMPANY  
P.O. BOX 1665 ELKHART, INDIANA 46515