



Spare parts list

(10492010) KM 75/40 W Bp

(10492020) KM 75/40 W Bp Pack

 **CLICK TO ORDER PARTS**

DE HINWEISE

Weitere Sprachen:

Diese Ersatzteilliste ist in weiteren Sprachen erhältlich. Sie erhalten diese unter www.kaercher.com im Bereich Service.

Die Schreibweise der Teilenummer, z.B. 75456380, entspricht der Teilenummer 7.545-638.0.

Mengenangaben:

Die Mengenangaben in der Ersatzteilliste entsprechen den in der Baugruppe verbauten Stückzahlen der Bauteile.

Meterware:

Ersatzteile welche als Meterware geliefert werden sind auf Einbaulänge selbst zu kürzen. Die Stückzahlen sind als Mindestbestellmenge =1m angegeben und müssen je nach Bedarf auf weitere volle Meterzahlen erhöht werden.

Versionen/ Werknummern:

Sind Versionen oder Werknummern in der Ersatzteilliste angegeben, ist anhand dieser vor Bestellung zu prüfen, welches Bauteil für ihr Gerät verwendet werden muss.

Lackierte Teile:

Bei Bestellungen von lackierten Teilen welche in der Ersatzteilliste nicht in verschiedenen Farben ausgewiesen sind, ist zusätzlich die Farbnummer oder Farbe mit anzugeben.

Technische Änderungen:

Technische Änderungen sowie das Recht der ausschließlichen Auswertung unseres geistigen Eigentums behalten wir uns vor.

EN INSTRUCTIONS

Other languages:

This list of spare parts is also available in other languages. You can get this list from www.kaercher.com in the Service division.

The designation of the part number e.g. 75456380 is equal to 7.545-638.0.

Quantity details:

The quantity details in the spare parts list correspond to the number of pieces of the component installed in the assembly group.

Piece goods:

Spare parts that are sold as piece goods are to be cut to the desired length. The quantities have been indicated as minimum order quantity =1m and must be rounded off to the full meter figure depending on your requirements.

Version/ Plant numbers:

If version or plant numbers are mentioned in the spare parts list, then use the same to check before ordering which spare part needs to be used for your appliance.

Painted parts:

While ordering painted parts that are not mentioned in the spare parts list in their colour variations, please mention the colour number or the colour you require.

Technical changes:

We reserve the right to make technical changes as well as the right to exclusive use of our intellectual property.

FR REMARQUES

Autres langues:

Cette liste de pièces de rechange est disponible en autres langues. Cela est disponible sous www.kaercher.com dans le menu Service.

La désignation du numéro de pièce, par ex. 75456380, correspond au numéro de pièce 7.545-638.0.

Indications de quantité:

Les indications de quantité dans la liste de pièces de rechange correspondre aux nombres de pièces des composants utilisées dans la construction.

Matériel au mètre:

Les pièces de rechange qui sont livrées au mètre doivent être raccourcies à longueur souhaitée par l'acheteur même. Les nombres des pièces sont indiquées en quantité de commande minimale = 1m et doivent être augmentés selon le besoin à une chiffre de mètre complète.

Versions/ Numéros d'usine:

Lorsqu'il sont indiquées des versions ou des numéros d'usine dans la liste de pièces de rechange, vous devez vérifier que composant doit être utilisé pour votre appareil.

Pièces laquées:

Pour commander des pièces laquées, où les différentes couleurs ne sont pas indiquées dans la liste des pièces de rechange, vous devez indiquer en plus le numéro de la couleur ou seulement la couleur.

Modifications techniques:

Nous nous réservons la possibilité des modifications techniques ainsi le droit d'exploitation exclusive de notre propriété intellectuelle.

IT AVVERTENZE

Altre lingue:

Il presente elenco di parti di ricambio è disponibile sul nostro sito Web anche in altre lingue: sotto www.kaercher.com alla voce "Service".

L'indicazione del codice pezzo, ad es. 75456380, corrisponde al codice pezzo 7.545-638.0

Indicazioni di quantità:

Le indicazioni di quantità riportate dall'elenco "parti di ricambio" corrispondono al numero delle singole componenti contenute nella rispettiva unità.

Merce a metro:

Le parti di ricambio fornite come "merce a metro" devono venire in seguito accorciate alla lunghezza necessaria per il montaggio. La quantità unitaria è indicata come "quantità minima di ordinazione = 1m" e deve all'occorrenza venire moltiplicata per il numero intero di metri necessari.

Versioni / Numeri di fabbricazione:

Quando l'elenco "parti di ricambio" riporta diverse versioni o numeri di fabbricazione, confrontare la versione o il numero di fabbricazione del ricambio desiderato con quelle/i presenti nell'elenco e indicarla/o al momento dell'ordinazione.

Parti di ricambio verniciate:

Nel caso di ricambi verniciati, se l'elenco parti di ricambio non ne riporta espressamente i diversi colori, al momento dell'ordinazione è necessario indicare anche il colore o il numero del colore desiderato.

Modifiche tecniche:

Ci riserviamo il diritto di apportare modifiche tecniche così come il diritto di utilizzo esclusivo della nostra proprietà intellettuale.

ES INDICACIONES

Otros idiomas:

La lista de piezas de repuesto se puede adquirir en otros idiomas. La puede adquirir en www.kaercher.com en el área de servicios.

La notación de los números de las piezas, p.ej. 75456380 corresponde al número de pieza 7.545-638.0.

Cantidades:

Las indicaciones de cantidades de la lista de piezas de repuesto corresponden al número de piezas montadas en el componente.

Mercancía por metros:

Las piezas de repuesto que se suministran por metros se pueden cortar al largo deseado. La unidad mínima de pedido es de = 1 m y el número de metros completos se puede aumentar según necesidad.

Versiones/números de fábrica:

Si se indica la versión o número de fábrica en la lista de piezas de repuesto, se debe comprobar en ella la pieza a usar para su aparato antes de realizar el pedido.

Piezas lacadas:

Al realizar pedidos de piezas lacadas que no estén indicadas en los diferentes colores en la lista de piezas de repuesto, se debe indicar también la referencia del color o el color.

Modificaciones técnicas:

Reservados los derechos de realizar modificaciones técnicas y aprovechar nuestra propiedad intelectual.

PL WSKAZÓWKI

Pozostałe języki:

Ta lista części zamiennych jest dostępna w także w innych językach. Mogą ją Państwo pobrać ze strony www.kaercher.com w dziale Serwis.

Sposób zapisywania numeru części, np. 75456380, odpowiada numerowi części 7.545-638.0.

Dane ilości:

Dane ilości podane w liście części zamiennych odpowiadają liczbie sztuk podzespołów tworzących dany moduł.

Towar sprzedawany na metry:

Części zamienne dostarczane jako towar sprzedawany na metry po zamontowaniu należy samodzielnie skrócić do potrzebnej długości. Liczba sztuk podana jest jako minimalna ilość zamówienia = 1m i w zależności od potrzeb zwiększa się ją o kolejne pełne metry.

Wersje/ Numer zakładu:

Jeżeli w liście części zamiennych podane są wersje lub numery zakładu, przed zamówieniem na ich podstawie należy sprawdzić, który podzespół stosuje się w Państwa urządzeniu.

Części lakierowane:

W przypadku zamówień części lakierowanych, które w liście części zamiennych nie podano w wielu kolorach, należy dodatkowo zaznaczyć nr koloru lub kolor.

Zmiany techniczne:

Zastrzegamy sobie prawo do zmian technicznych oraz wyłącznego wykorzystywania naszej własności intelektualnej.

RU УКАЗАНИЯ:

Другие языки:

Данный список запасных частей также доступен на других языках. Вы найдете его на сайте www.kaercher.com в разделе Service
Маркировка номера детали, например, 75456380, соответствует номеру детали 7.545-638.0.

Указание количества:

Количественные данные в списке запасных частей соответствуют числу компонентов, входящих в состав узлов.

Товар, продаваемый на метры:

Запасные части, продающиеся на метры, необходимо обрезать до нужной длины. Число изделий указано в виде минимального объема заказа = 1м и их количество можно округлить до требуемого по мере необходимости.

Варианты исполнения/заводские номера:

Если варианты исполнения или заводские номера указаны в списке запасных частей, то перед заказом необходимо проверить, какая деталь подходит для вашего устройства.

Лакированные детали:

При заказе лакированных деталей, варианты расцветки которых не указаны в списке запасных частей, необходимо дополнительно указать номер цвета или необходимый для вас цвет.

Технические изменения:

Мы оставляем за собой право на технические изменения, а также право на исключительное использование нашей интеллектуальной собственности.

CONTENT LIST

1.0 Basic machinery

2.0 Sweep tank

3.0 Sweep roller chest

4.0 Transmission completely

5.0 Side broom

6.1 Side broom

[Version 1](#)

6.2 Side broom

[Version 2](#)

6.0 Filter box

7.0 Operating unit battery

[1.049-201/-202 BAT](#)

8.0 Battery transmission

[1.049-201/-202 BAT](#)

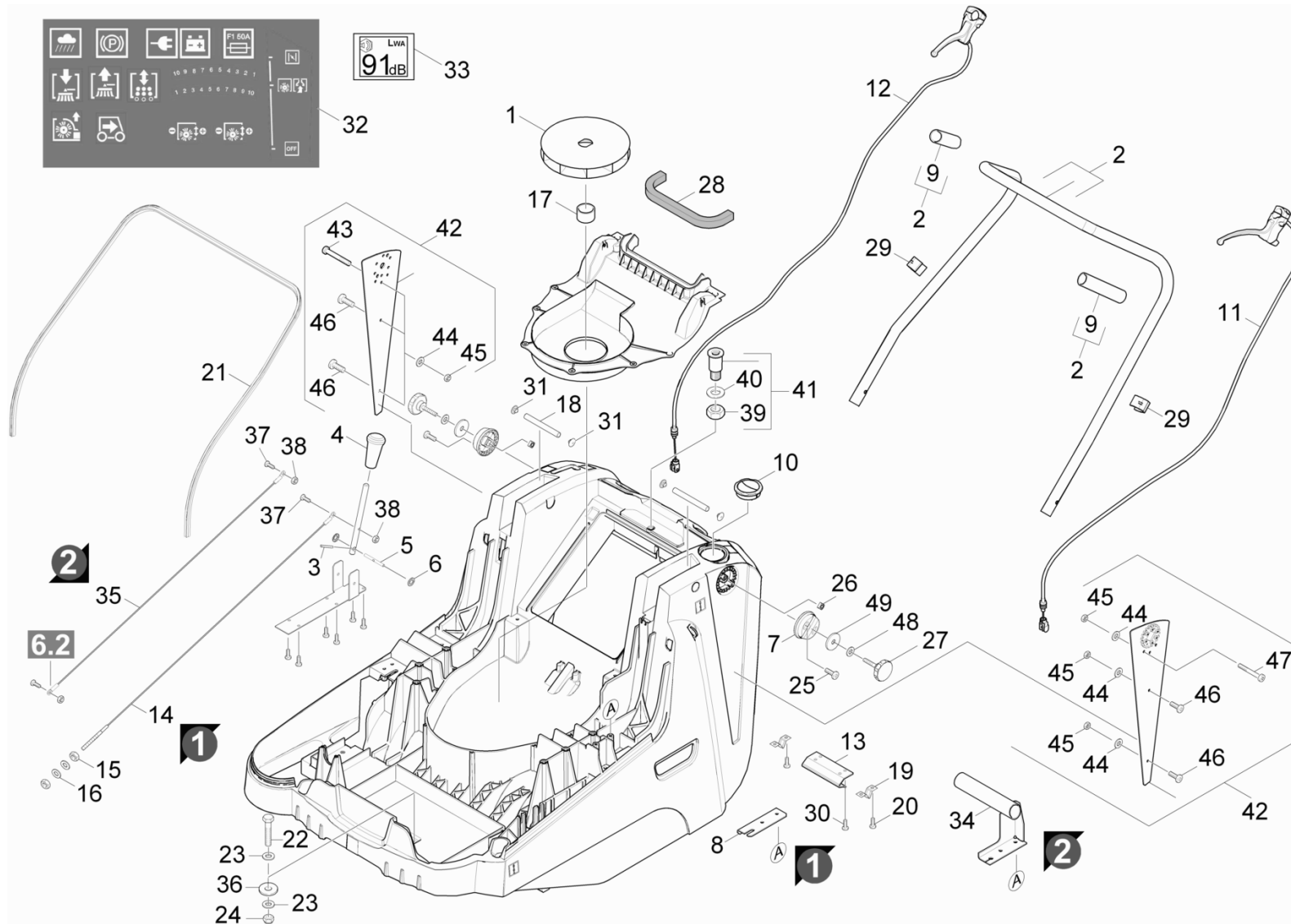
9.0 Battery

[1.049-201/-202 BAT](#)

10.0 ABS carpet sweep unit

[1.049-201/-202](#)

1.0 Basic machinery



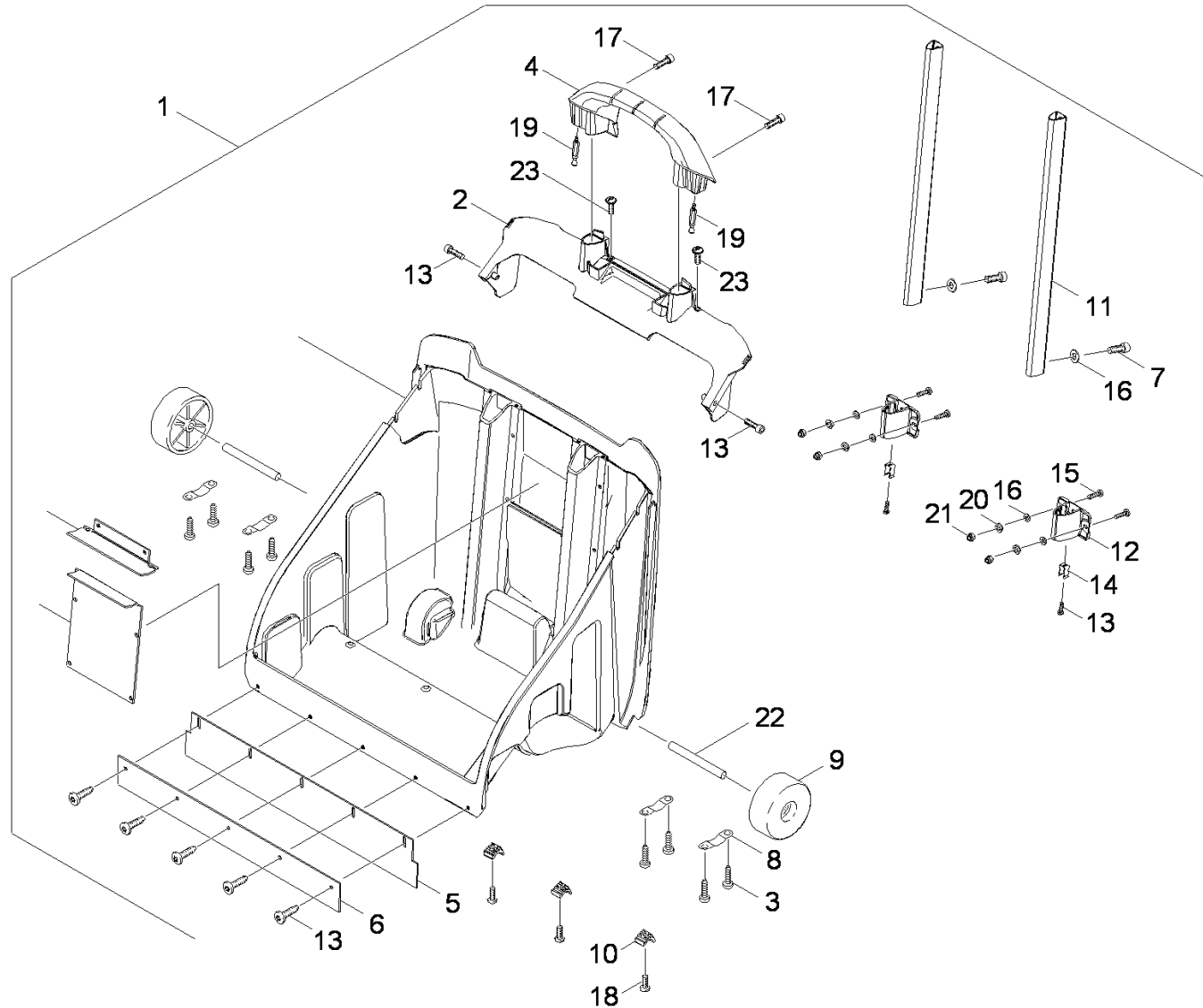
1.0 Basic machinery

POS	DESCRIPTION ADDITIONAL INFORMATIONS	PART NO	QTY.	FROM SER.NR.	UP TO SER. NR.
1	Blower wheel	56000860	1		
2	Shearing shackle	50347970	1		
3	Spring pin 2,5x12-St ISO 8752	73149530	1		
4	Hand grip	53216060	1		
5	Bolt adjustment side broom	53172210	1		
6	Lock washer	63431190	2		
7	Fixing retaining bracket	50933240	2		
8	Plate bowden wire gear	50093370	1		
	Version 1				
9	Hose	63902690	1		
10	Air flap	64158960	1		
11	Bowden wire gear	64312580	1		
12	Bowden wire bulk waste flap	64312570	1		
13	Plate frame retainer	50094850	1		
14	Tackle	64312590	1		
	Version 1				
15	Hexagon nut M8 -8-A3E ISO 4032	73110040	2		
16	Hexagon nut M6 -8-A2E ISO 4032	73110030	2		
17	Sleeve blower wheel	51163370	1		
18	Sleeve cover	51163190	2		
19	Spring	63301490	2		
20	Screw 4x12 -10.9-R2R (In6RD)	73031060	4		
21	Sealing profile	63655110	1		
22	Hexagonal head screw M 8x50-8.8-A2E IS	73044610	4		
23	Washer 8 -200HV-A3E ISO 7090	73120040	8		
24	Hexagon nut M8 -04-A2E ISO 10511	73114270	4		
25	Screw 5x20 -10.9-R2R (In6Rd)	73031080	4		
26	Square nut M8 -05-A2E DIN 557	73115700	2		
27	Star grip	63211790	2		
28	Cellular rubber profile	62732710	1		
29	Cable clip	58394080	2		
30	Screw 6x20 -10.9-R2R (In6Rd)	73031120	21		

1.0 Basic machinery

POS	DESCRIPTION ADDITIONAL INFORMATIONS	PART NO	QTY.	FROM SER.NR.	UP TO SER. NR.
31	Plug	63859350	4		
32	Adhesive label safety instructions KM 75	53918510	1		
33	DECAL 91DB	53873610	1		
34	Exhaust complete Version 2	40407490	1		
35	Tackle side broom Version 2	64312820	1		
36	Washer 8-200HV-A2E ISO7093-1	73122770	4		
37	Screw M5x20 -8.8-R2R (In6Rd)	73060780	1		
38	Hexagon nut M 5-04-A2E ISO 10511	73114210	1		
39	Hexagon nut M10 -8-A3E ISO 4032	73110060	1		
40	Washer 10-200HV-A3E ISO 7090	73120050	1		
41	Conversion kit insert screw connector	26419680	1		
42	Conversion kit shearing shackle KM 75/40	26419650	1		
43	Screw M 5x40-ST- 8.8-A2R (IN6RD)	73060840	1		
44	Washer 5-100HV-A3E ISO 7094	73122640	7		
45	Hexagon nut M 5-04-A2E ISO 10511	73114210	7		
46	Screw M5x20 -8.8-R2R (In6Rd)	73060780	8		
47	Screw M5x50 -A2-70 (In6Rd)	73061870	2		
48	Spring washer B 8-FSt-A3E DIN 127	73130040	2		
49	Washer 8-200HV-A2E ISO7093-1	73122770	2		

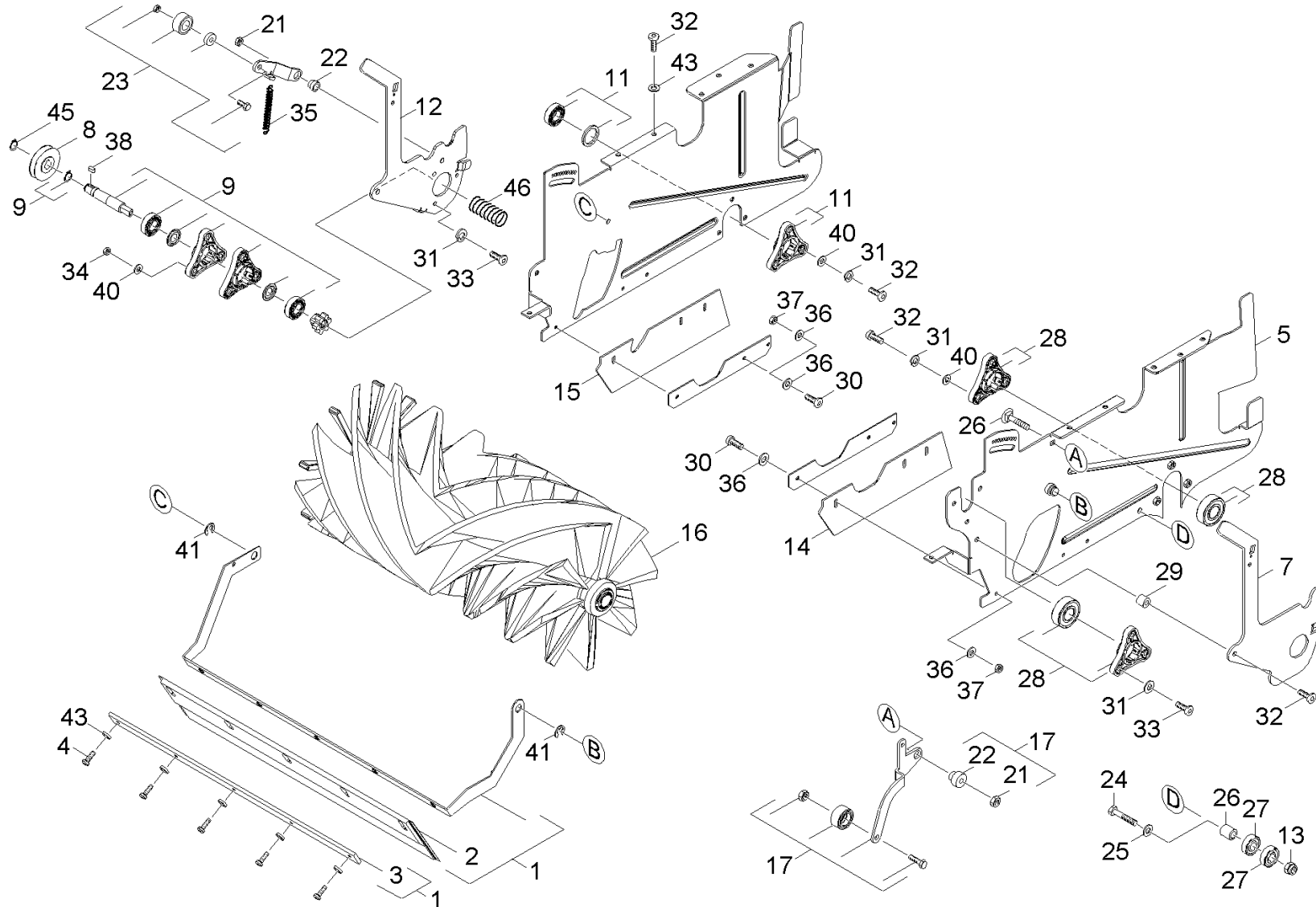
2.0 Sweep tank



2.0 Sweep tank

POS	DESCRIPTION ADDITIONAL INFORMATIONS	PART NO	QTY.	FROM SER.NR.	UP TO SER. NR.
1	Sweep tank complete	28508180	1		
2	Reinforcement sweep tank	50642510	1		
3	Screw 4x12 -10.9-R2R (In6RD)	73031060	10		
4	Trolley handhold	53218580	1		
5	Skirting rear	53948160	1		
6	Plate skirting rear	50092640	1		
7	Cylinder head screw M 6X 12-8.8-A2R	63031930	2		
8	Clamp clip	69032410	4		
9	Wheel	55150680	2		
10	Slide part sweep tank KSM 750	50311570	3		
11	Bar sweep tank	51072850	2		
12	Guide Trolley	50642500	2		
13	Screw 6x20 -10.9-R2R (In6Rd) 1.049-200 <10159, /-201 <10019, /-202 <10075	73031120	9		
14	Spring clip	63304070	2		
15	Screw M6x25 -8.8-R3R (In6Rd)	73060940	4		
16	Washer 6 -200HV-A3E ISO 7090	73120030	8		
17	Screw M6x12 -St-R3R (In6Rd)	73030460	2		
18	Countersunk screw 5,0X 16-ST-A2R	63030570	3		
19	Locking plug long	51081970	2		
20	Spring washer B 6-FST-A2E DIN 137	73123050	4		
21	Hexagon nut M 6-8-A2E ISO 7040	73115120	4		
22	Pin	53140690	2		
23	Screw 5x16 -10.9-P2R (K-In6Rd)	73031070	4		

3.0 Sweep roller chest



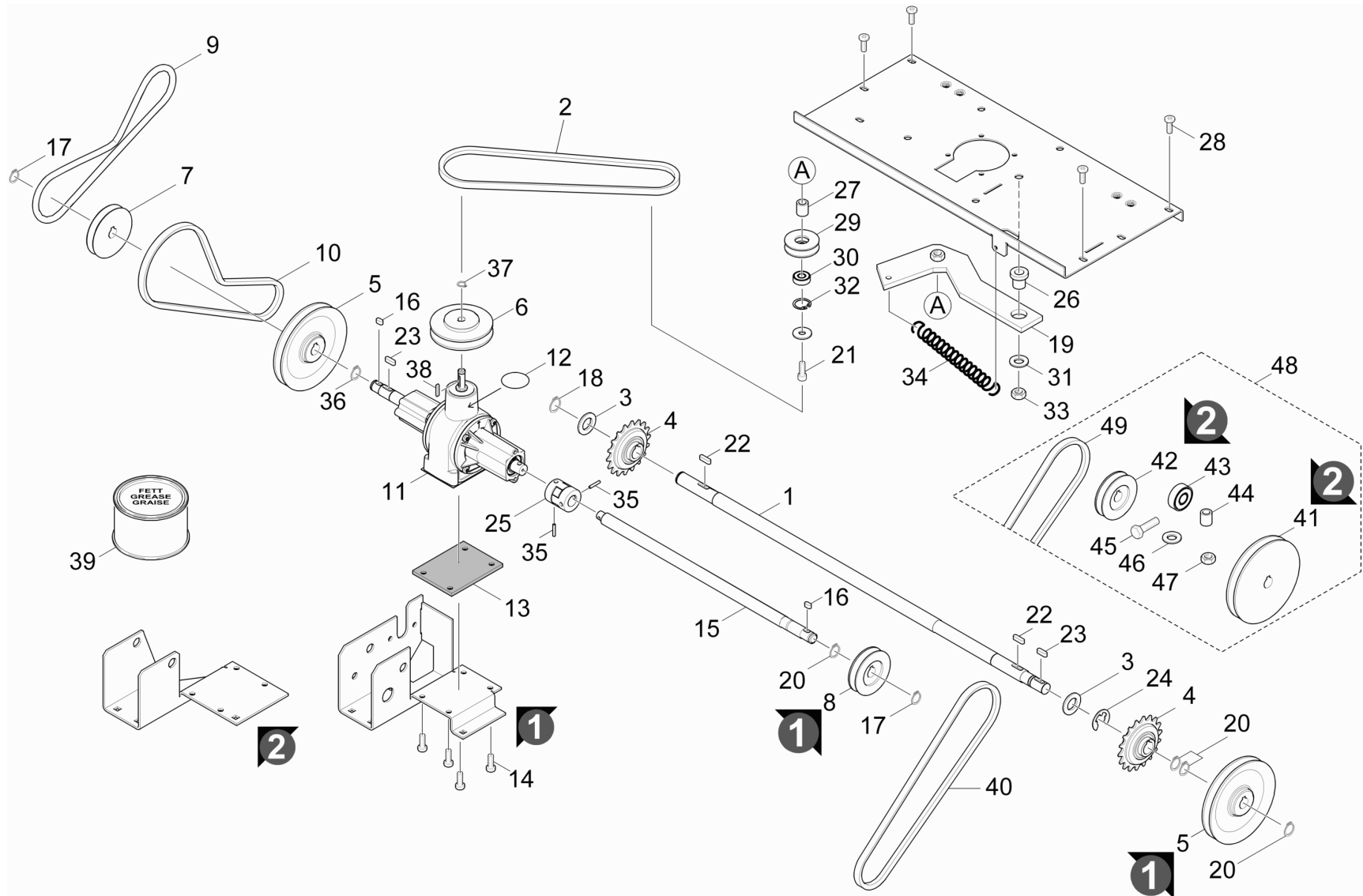
3.0 Sweep roller chest

POS	DESCRIPTION ADDITIONAL INFORMATIONS	PART NO	QTY.	FROM SER.NR.	UP TO SER. NR.
1	Bulk waste flap complete	40406330	1		
2	Skirting front	53948150	1		
3	Plate skirting front	50092650	1		
4	Screw M6x16 -8.8-R3R (In6Rd)	73060900	5		
5	Side plate left complete	40406890	1		
6	Side plate right complete	40406880	1		
7	Sheet metal component lever left	40406690	1		
8	Belt pulley D 56,5	56254800	1		
9	Bearing flange shaft complete	42530010	5		
10	Ball bearing	64013310	1		
11	Bearing flange complete D 17	42530020	1		
12	Sheet metal component lever right	40406380	1		
13	Hexagon nut M 6-8-A2E ISO 7040	73115120	1		
14	Skirting side left	53948170	1		
15	Skirting side right	53948180	1		
16	Reversing rolling mill standard	69068840	1		
16	Reversing rolling mill hard	69068850	1		
16	Reversing rolling mill soft	69068860	1		
16	Reversing rolling mill antistatic	69069500	1		
17	Belt stretcher gear	40406990	1		
21	Hexagon nut M8 -04-A2E ISO 10511	73114270	1		
22	Sleeve belt stretcher	51163360	1		
23	Belt stretcher reversing rolling mill	40406980	1		
24	Hexagonal head screw M 6x35-A4-70 ISO 4	73041200	1		
25	Washer 6-200HV-P4E ISO 7089	73120450	1		
26	Sleeve	51164080	1		
27	Ball bearing 626-2RS -Wälzl.St. DIN 625	74010470	2		
28	Bearing flange complete D 15	42530030	1		
29	Sleeve	51101770	4		
30	Screw M5x25 -8.8-R2R (In6Rd)	73060790	6		
31	Spring washer B 6-FST-A2E DIN 137	73123050	16		
32	Screw M6x20-ST- 8.8-A3R (IN6RD)	73060920	20		

3.0 Sweep roller chest

POS	DESCRIPTION ADDITIONAL INFORMATIONS	PART NO	QTY.	FROM SER.NR.	UP TO SER. NR.
33	Screw M6x30 -8.8-R3R (In6Rd)	73061050	6		
34	Hexagon nut M6 -04-A2E ISO 10511	73114250	7		
35	Extension spring	63301030	1		
36	Washer 5 -A2 ISO 7093-1	73122820	12		
37	Hexagon nut M 5-04-A2E ISO 10511	73114210	6		
38	Parallel key 5x5x12 -C45R DIN 6885-1	73180840	1		
40	Washer 6-200HV-P4E ISO 7089	73120450	18		
41	Lock washer 10-FST-A2E DIN 6799	73430470	2		
42	Screw 6x20 -10.9-R2R (In6Rd)	73031120	1		
43	Washer 6 -200HV-A2E ISO7093-1	73122760	6		
45	Locking ring 14x1-FST-PHR DIN 471	73430310	1		
46	Helical spring	53321140	1		

4.0 Transmission completely



4.0 Transmission completely

POS	DESCRIPTION ADDITIONAL INFORMATIONS	PART NO	QTY.	FROM SER.NR.	UP TO SER. NR.
1	Shaft wheel axle	51005230	1		
2	Large V-belt motor	63484380	1		
3	Washer 16-200HV-A3E ISO7090	73120190	3		
4	Sprag clutch	64014130	2		
5	Belt pulley	56252770	2		
6	Belt pulley	56254230	1		
7	Belt pulley SB	56254810	1		
8	Belt pulley gear	56254820	1		
9	Round belt D10	63484360	1		
10	Large V-belt reversing rolling mill	63484370	1		
11	Gear replacement	40607810	1		
12	O-Ring seal 57x1,5	63633940	1		
13	Plate rubber	62732700	1		
14	Screw M5x16 -8.8-R2R (In6Rd)	73060770	4		
15	Shaft gear long	51005310	1		
16	Parallel key A5x5x10-C45R DIN 6885	73180900	2		
17	Locking ring 14x1-FST-PHR DIN 471	73430310	2		
18	Locking ring 17x1-FST-RF DIN 471	73430290	1		
19	Belt stretcher motor	40406420	1		
20	Locking ring 15x1-FST-RF DIN 471	73430150	4		
21	Cylinder head screw M 8x25-8.8-A2E DIN	73065210	1		
22	Parallel key 5X 5X 18-C45R DIN 6885	73180030	2		
23	Parallel key 5x5x16 -C45R DIN 6885-1	73180020	2		
24	Lock washer 15 -A2 DIN 6799	73433040	1		
25	Coupler	64650270	1		
26	Sleeve belt stretcher	51163360	1		
27	Bush	53170690	1		
28	Screw M6x20-ST- 8.8-A3R (IN6RD) 1.049-202.0	73060920	4	10143	
29	Belt pulley belt stretcher 750 HO	56253750	1		
30	Ball bearing 608-2RS -Wälzl.St DIN 625	74011490	1		
31	Washer 8-200HV-A2E ISO7093-1	73122770	1		

4.0 Transmission completely

POS	DESCRIPTION ADDITIONAL INFORMATIONS	PART NO	QTY.	FROM SER.NR.	UP TO SER. NR.
32	Locking ring 22x1-FST-PHR DIN 472	73431050	1		
33	Hexagon nut M 8-A2-70 EN 1661	73110600	1		
34	Extension spring	63301830	1		
35	Spring pin	64915570	2		
	Version 1 (l = 25,4mmm)				
35	Spring pin 5,0x28-St ISO 8752	73149450	2		
	Version 2 (l = 28mm)				
36	Locking ring 15x1-FST-PHR DIN 471	73430040	1		
37	Locking ring 9x1-FST-phr DIN 471	73430330	1		
38	Parallel key A3x3x18 -C45R DIN 6885	73181050	1		
39	Viscous oil	62880950	1		
40	Large V-belt 1292 mm	63484540	1		
41	Belt pulley	56255010	1		
42	Belt pulley gear	56255000	1		
43	Ball bearing 626-2RS -Wälzl.St. DIN 625	74010470	2		
44	Sleeve	51164080	1		
45	Hexagonal head screw M 6x35-A4-70 ISO 4	73041200	1		
46	Washer 6-200HV-P4E ISO 7089	73120450	1		
47	Hexagon nut M 6-8-A2E ISO 7040	73115120	1		
48	Conversion kit belt pulley KM 75/40	26419580	1		
49	Large V-belt Z/10	63483550	1		

5.0 Side broom

6.1 Side broom

[Version 1](#)

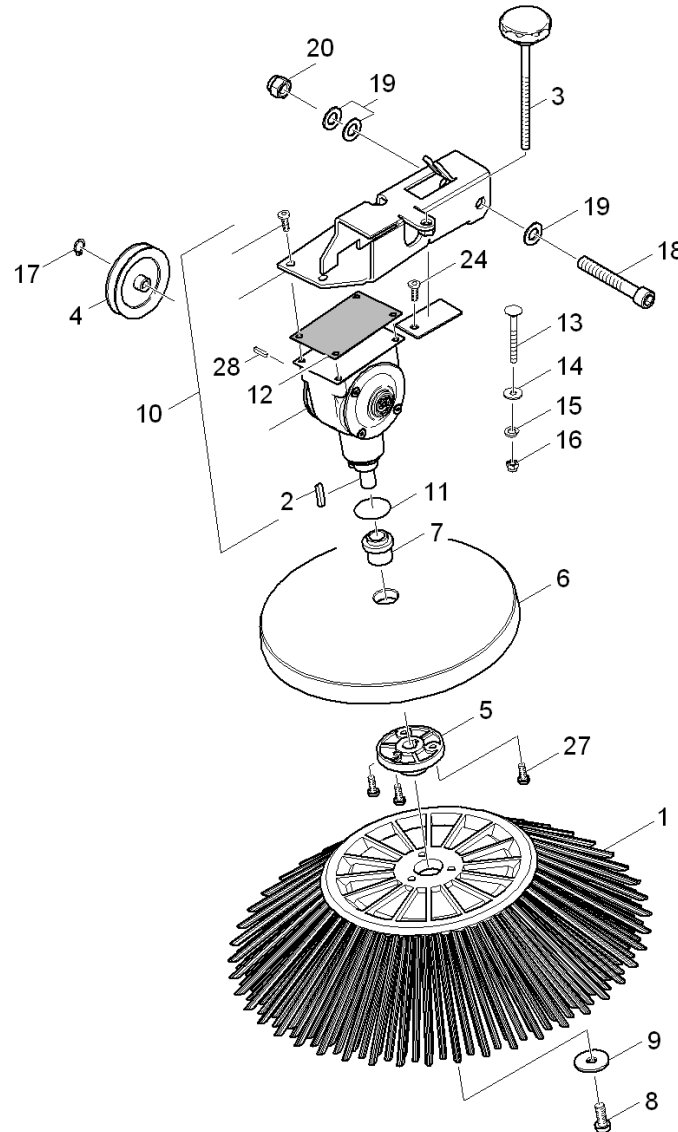
6.2 Side broom

[Version 2](#)



6.1 Side broom

Version 1



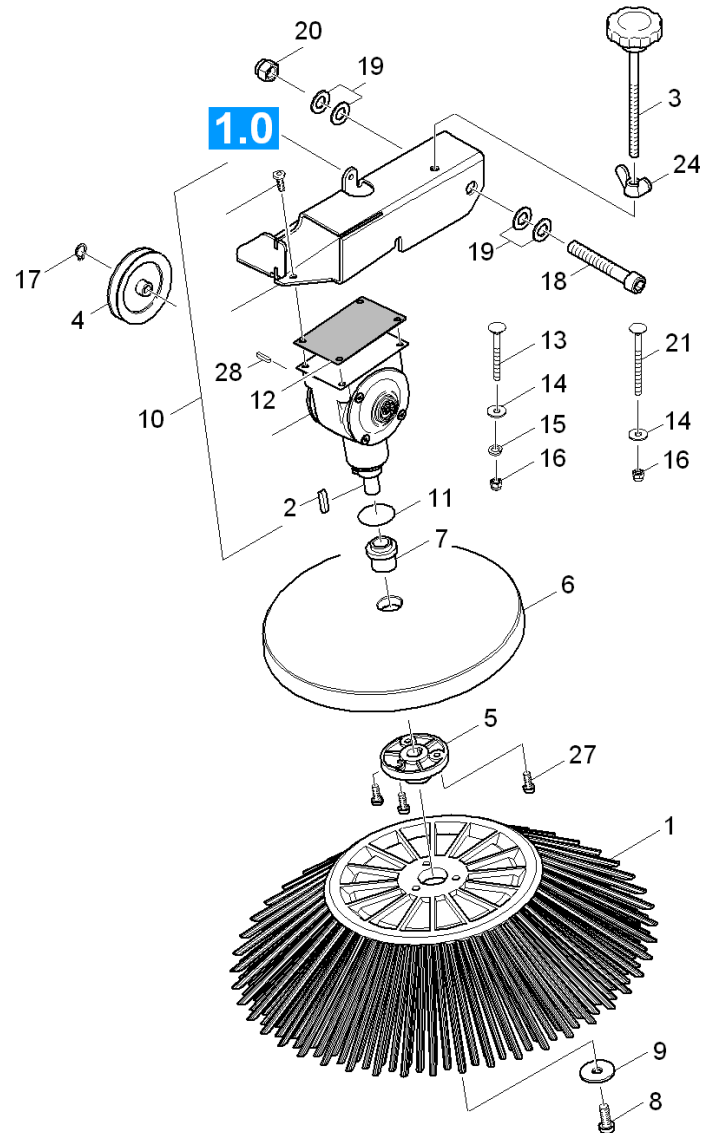
6.1 Side broom

Version 1

POS	DESCRIPTION ADDITIONAL INFORMATIONS	PART NO	QTY.	FROM SER.NR.	UP TO SER. NR.
1	Side broom hard	69056250	1		
1	Side broom soft	69056260	1		
2	Parallel key A 5x5x25-C45R DIN 6885	73180790	1		
3	Star grip	63212170	1		
4	Belt pulley round belt D10	56254900	1		
5	Hub	51203050	1		
6	Rejecting plate	50642520	1		
7	Sleeve rejecting plate	51163210	1		
8	Screw M6x20-ST- 8.8-A3R (IN6RD)	73060920	1		
9	Washer 6 -100HV-A3E ISO 7094	73122600	1		
10	Housing complete side broom	40607150	1		
11	Joint ring NILOS 6002	63632920	2		
12	Plate rubber	62732700	1		
13	Saucer-head screw M6x60 -St-A0P DIN 603	73032330	5		
14	Washer 6 -200HV-A2E ISO7093-1	73122760	4		
15	Spring washer B 6-FST-A2E DIN 137	73123050	5		
16	Hexagon nut M 6-8-A2E ISO 7040	73115120	5		
17	Locking ring 8x0,8-FST-PHR DIN 471	73430140	1		
18	Cylinder head screw M12x80- 8.8-A3E IS	73061220	1		
19	Washer	51156810	3		
20	Hexagon nut M12-8-A2E ISO 7040	73115150	1		
24	Screw 6x20 -10.9-R2R (In6Rd)	73031120	1		
27	Cylinder head screw M6x12-8.8-A2E DIN 6	73065000	3		
28	Parallel key 3x3x10-C45R DIN 6885	73180060	1		

6.2 Side broom

Version 2

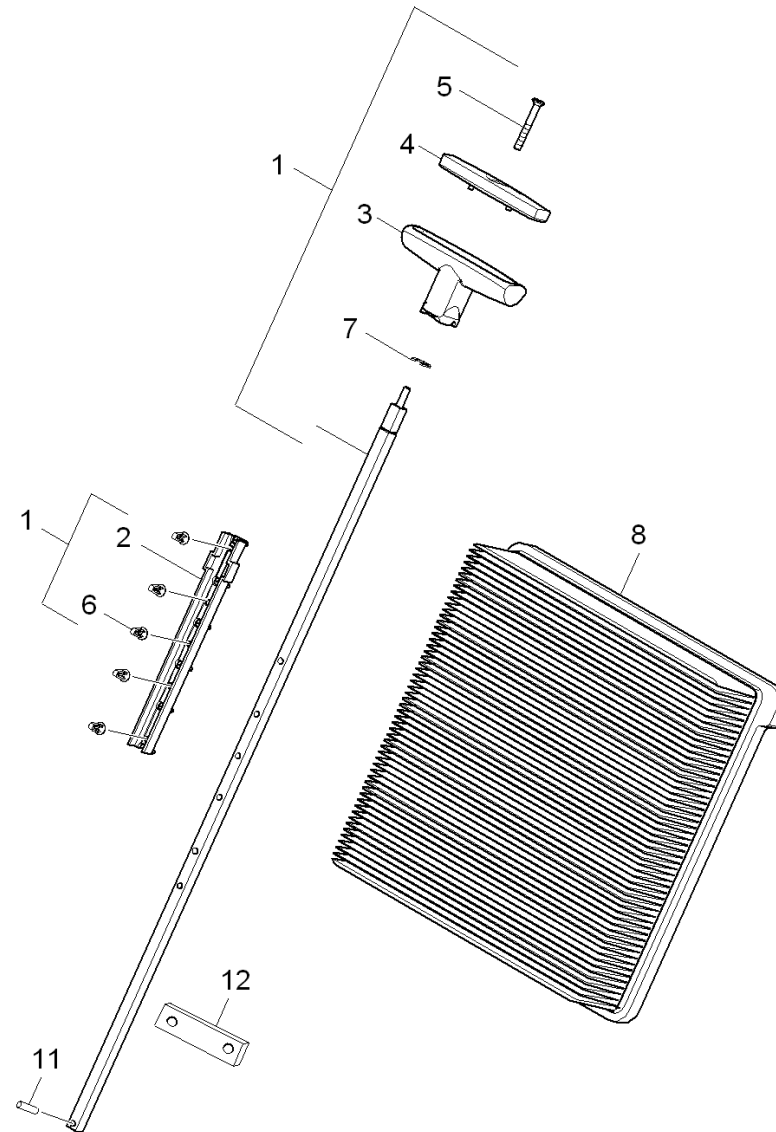


6.2 Side broom

Version 2

POS	DESCRIPTION ADDITIONAL INFORMATIONS	PART NO	QTY.	FROM SER.NR.	UP TO SER. NR.
1	Side broom hard	69056250	1		
1	Side broom soft	69056260	1		
2	Parallel key A 5x5x25-C45R DIN 6885	73180790	1		
3	Star grip	63212170	1		
4	Belt pulley round belt D10	56254900	1		
5	Hub	51203050	1		
6	Rejecting plate	50642520	1		
7	Sleeve rejecting plate	51163210	1		
8	Screw M6x20-ST- 8.8-A3R (IN6RD)	73060920	1		
9	Washer 6 -100HV-A3E ISO 7094	73122600	1		
10	Housing complete side broom	40607150	1		
11	Joint ring NILOS 6002	63632920	2		
12	Plate rubber	62732700	1		
13	Saucer-head screw M6x60 -St-A0P DIN 603	73032330	4		
14	Washer 6 -200HV-A2E ISO7093-1	73122760	4		
15	Spring washer B 6-FST-A2E DIN 137	73123050	5		
16	Hexagon nut M 6-8-A2E ISO 7040	73115120	5		
17	Locking ring 8x0,8-FST-PHR DIN 471	73430140	1		
18	Cylinder head screw M12x80- 8.8-A3E IS	73061220	1		
19	Washer	51156810	4		
20	Hexagon nut M12-8-A2E ISO 7040	73115150	1		
21	Saucer-head screw M6x80 -St-A0P DIN 603	73032650	1		
24	Wing nut M 8-A DIN 315	73100080	1		
27	Cylinder head screw M6x12-8.8-A2E DIN 6	73065000	3		
28	Parallel key 3x3x10-C45R DIN 6885	73180060	1		

6.0 Filter box

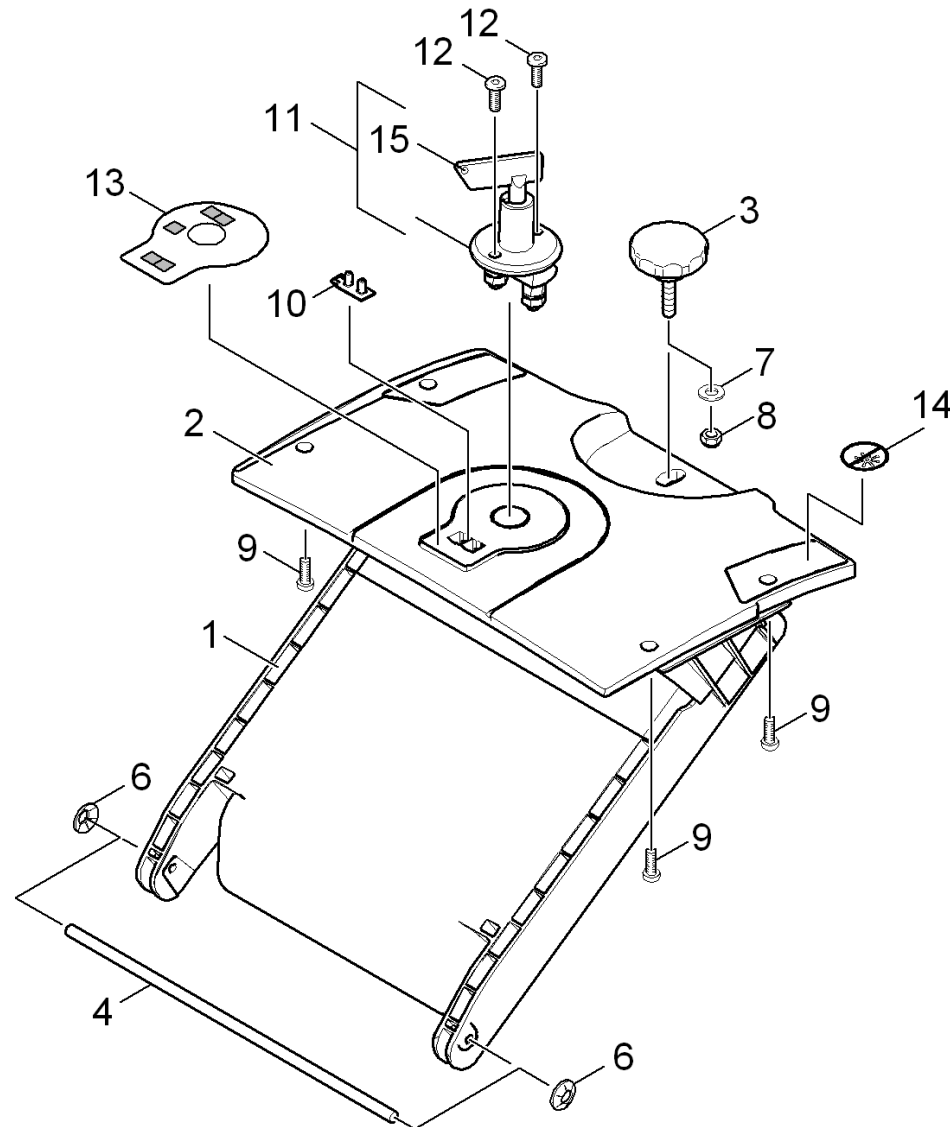


6.0 Filter box

POS	DESCRIPTION ADDITIONAL INFORMATIONS	PART NO	QTY.	FROM SER.NR.	UP TO SER. NR.
1	Filter vibrator complete	40406430	1		
2	Stripper	50309000	1		
3	Handhold	53217360	1		
4	Button	53260280	1		
5	Countersunk screw M5x40 -A2-70 (IN6RD)	73050940	1		
6	Rivet	63150680	5		
7	Locking ring 8-A2 DIN 6799	73433030	1		
8	Filter cartridge without groove KM 75/40	57316350	1		
11	Spring pin 5,0x28-St ISO 8752	73149450	1		
12	Sheet metal component guide	50093520	1		

7.0 Operating unit battery

1.049-201/-202 BAT



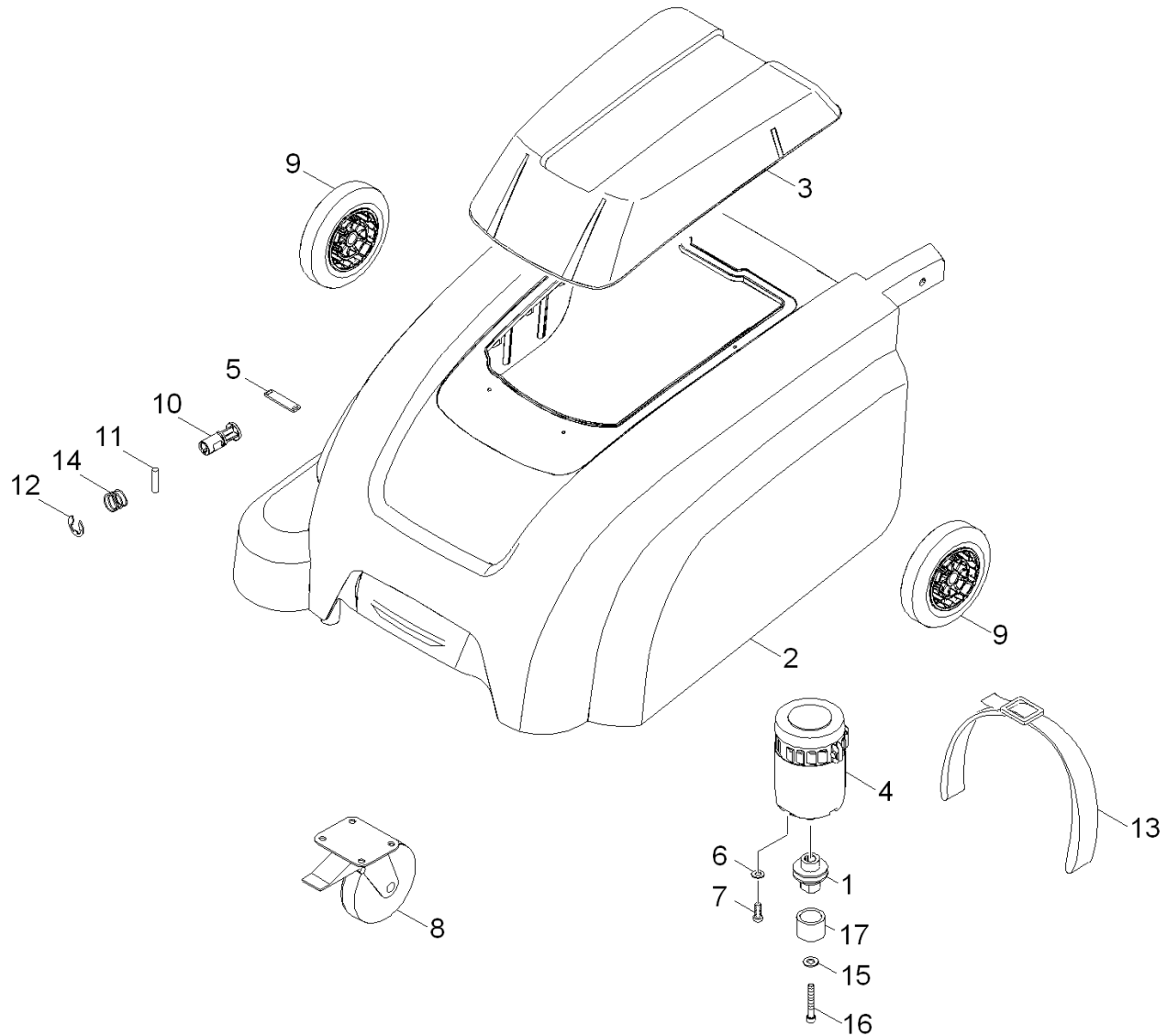
7.0 Operating unit battery

1.049-201/-202 BAT

POS	DESCRIPTION ADDITIONAL INFORMATIONS	PART NO	QTY.	FROM SER.NR.	UP TO SER. NR.
1	Cover filter	50642490	1		
2	Operating unit battery	50933260	1		
3	Star grip	63212160	1		
4	Axle	51056280	1		
6	Lock washer	63431190	2		
7	Washer 8 -200HV-A3E ISO 7090	73120040	1		
8	Hexagon nut M8 -04-A2E ISO 10511	73114270	1		
9	Screw 5x16 -10.9-P2R (K-In6Rd)	73031070	4		
10	Circuit board LED KM 75/40 W	66829570	1		
11	Key switch	66341960	1		
12	Screw 6x20 -10.9-R2R (In6Rd)	73031120	2		
13	Foil control panel KM 75/40 W BAT	53918810	1		
14	Label	53908530	1		
15	Key	66342010	1		

8.0 Battery transmission

1.049-201/-202 BAT



8.0 Battery transmission

1.049-201/-202 BAT

POS	DESCRIPTION ADDITIONAL INFORMATIONS	PART NO	QTY.	FROM SER.NR.	UP TO SER. NR.
1	Shaft motor battery	51005280	1		
2	Cover battery	50681970	1		
3	Flap service battery	50642630	1		
4	Direct current motor 400 W	66131110	1		
5	Plate closure cover	50943280	1		
6	Washer 6 -200HV-A3E ISO 7090	73120030	4		
7	Screw M6x20-ST- 8.8-A3R (IN6RD)	73060920	4		
8	Castor	64353220	1		
9	Wheel complete traceless	64357670	2		
10	Bolt closure	51163220	1		
11	Straight pin 5m6x35-A1 ISO 2338	73141530	1		
12	Lock washer 15 -A2 DIN 6799	73433040	1		
13	Retaining belt 1x25x1700	62776070	2		
14	Helical spring	53322360	1		
15	Washer 8-200HV-A2E ISO7093-1	73122770	1		
16	Cylinder head screw M8x55 -A4-70 ISO 47	73062220	1		
17	Sleeve blower wheel BAT	51163690	1		

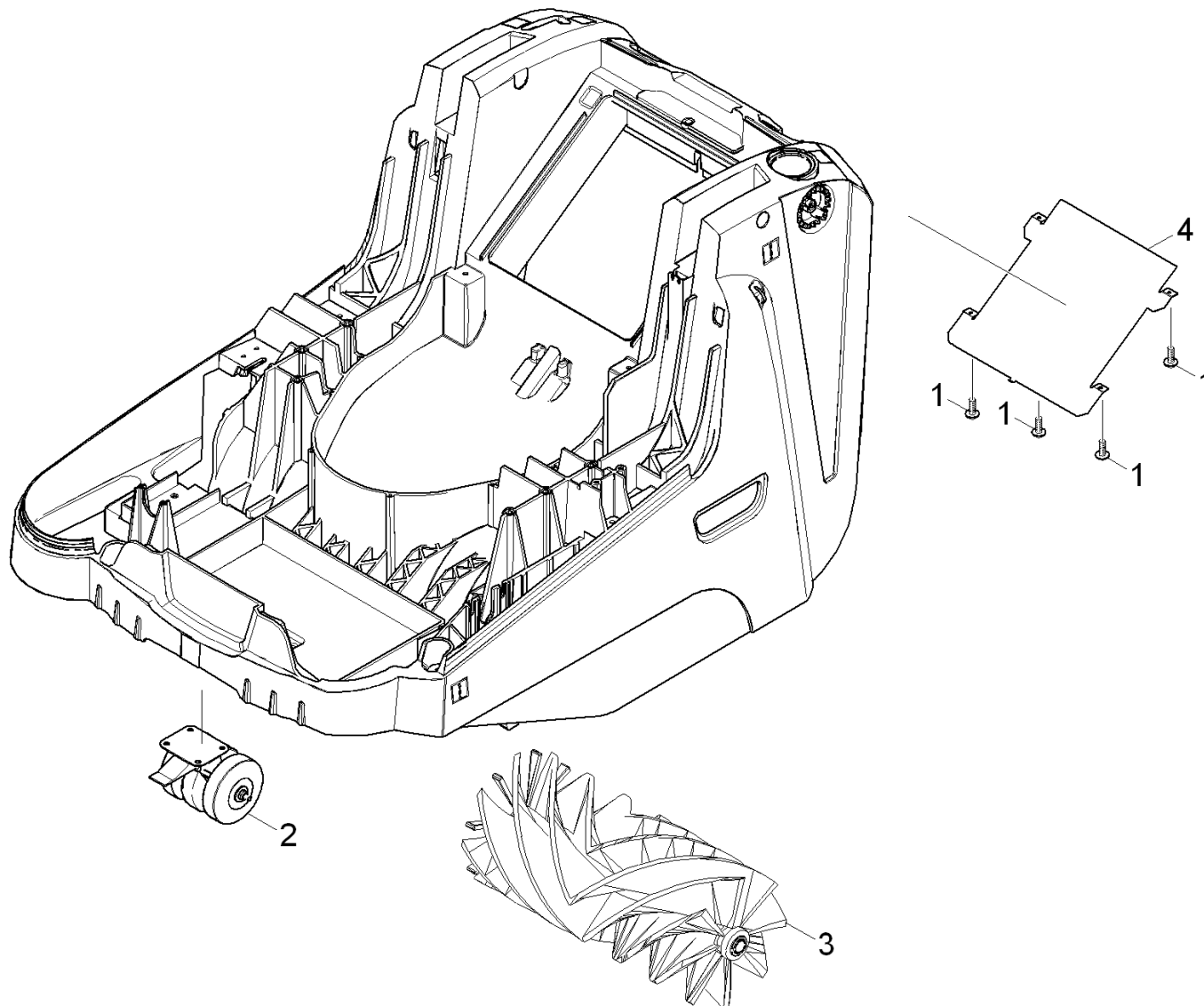
9.0 Battery

1.049-201/-202 BAT

POS	DESCRIPTION ADDITIONAL INFORMATIONS	PART NO	QTY.	FROM SER.NR.	UP TO SER. NR.
1	Battery charger Onboard 1.049-202.0	66542250	1		
2	Drive battery maintenance free 60Ah 1.049-202.0	66542260	2		
3	Cable complete 1.049-202.0	66478740	1		
4	Power relay 1.049-201.0	66333890	1		
5	Battery monitoring BAT	66829020	1		
6	Cable set complete KM 75/40 W Bat	48225290	1		
7	Blade type fuse MEGA 50A	66442720	1		

10.0 ABS carpet sweep unit

1.049-201/-202



10.0 ABS carpet sweep unit

1.049-201/-202

POS	DESCRIPTION ADDITIONAL INFORMATIONS	PART NO	QTY.	FROM SER.NR.	UP TO SER. NR.
1	Screw 6x20 -10.9-R2R (In6Rd)	73031120	4		
2	Castor complete	45152970	1		
3	Reversing rolling mill antistatic	69069500	1		
4	Perforated plate	50096090	1		