

KÄRCHER

Spare Parts List

Chariot 2 iGloss 20 - Aurora

1.008-092.0

1.008-093.0

1.008-094.0

1.008-095.0

1.008-096.0

1.008-097.0

1.008-098.0

1.008-099.0

1.008-100.0

1.008-101.0

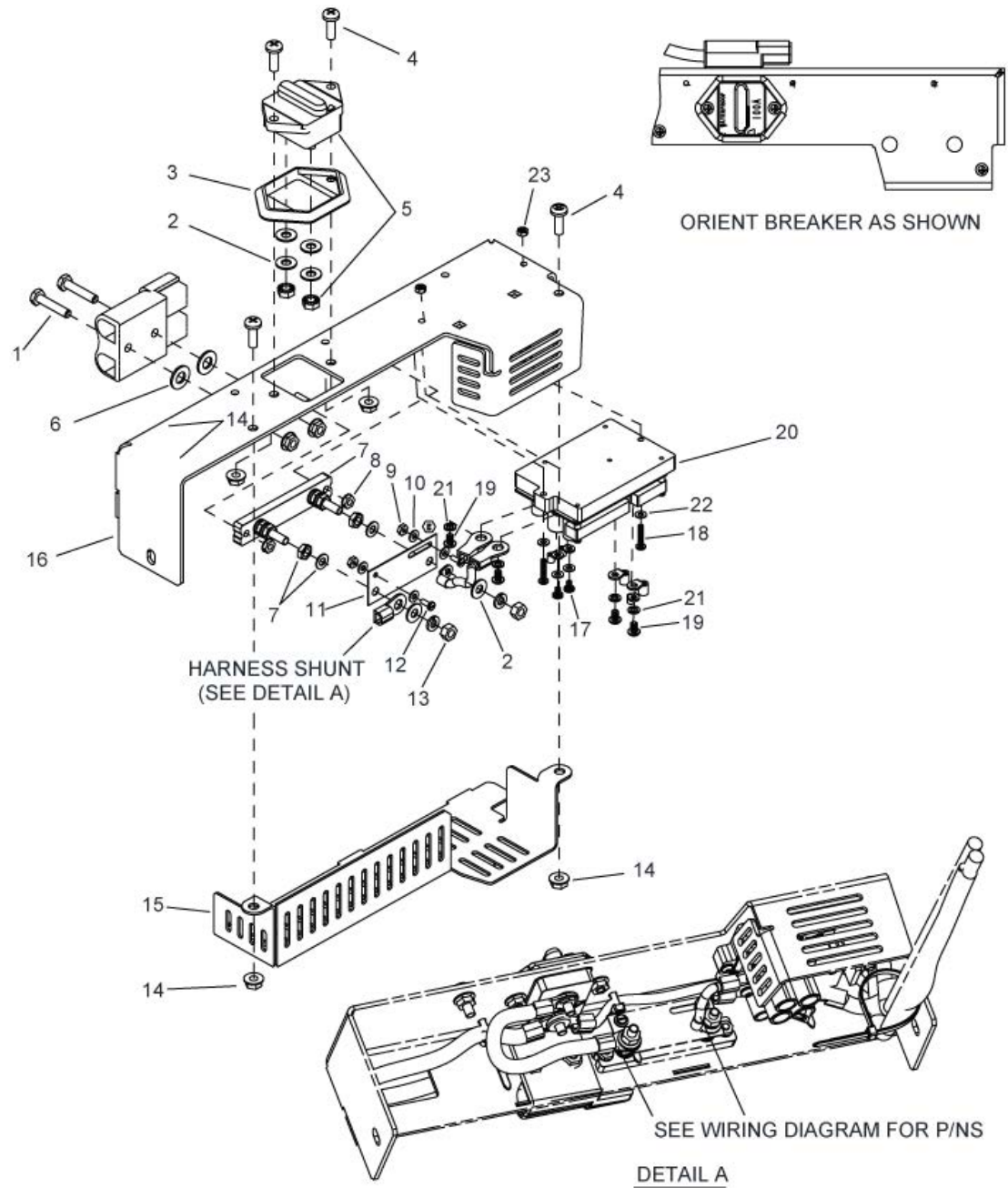
Table of contents

All Models iGloss 20 - Aurora (0.175-370.0)	2
10 BODY BRACE	3
20 BODY LOWER	5
30 BODY LOWER MOUNTING	7
40 BUMPER	9
50 BURNISHING DECK	11
60 BURNISHING DECK MOUNTING	13
70 BURNISHING DECK LIFT	15
80 BURNISHING DECK - PAD DRIVER	17
90 CONSOLE - BAG ENCLOSURE	19
100 CONSOLE - HINGE	21
110 CONTROL PANEL 1	23
120 CONTROL PANEL 2	25
130 CHARGER - ON BOARD	27
140 DECALS	29
150 SLEW/STEERING	31
160 DRIVE LOWER	33
1 Traction motor C2 (8.641-117.0)	36
170 FRAME & REAR WHEELS	38
180 DRIVE MOUNTING	40
190 PEDAL PLATFORM	42
200 PEDAL PLATFORM MOUNTING	44
210 STEERING	46
220 VACUUM	48
230 BATTERY CABLE ASM, IGLOSS 20	50
240 BATTERY	52
260 BATTERY TRAY, iGLOSS 20	54
260 BATTERY TRAY SM, iGLOSS 20	56

All Models iGloss 20 - Aurora (0.175-370.0)

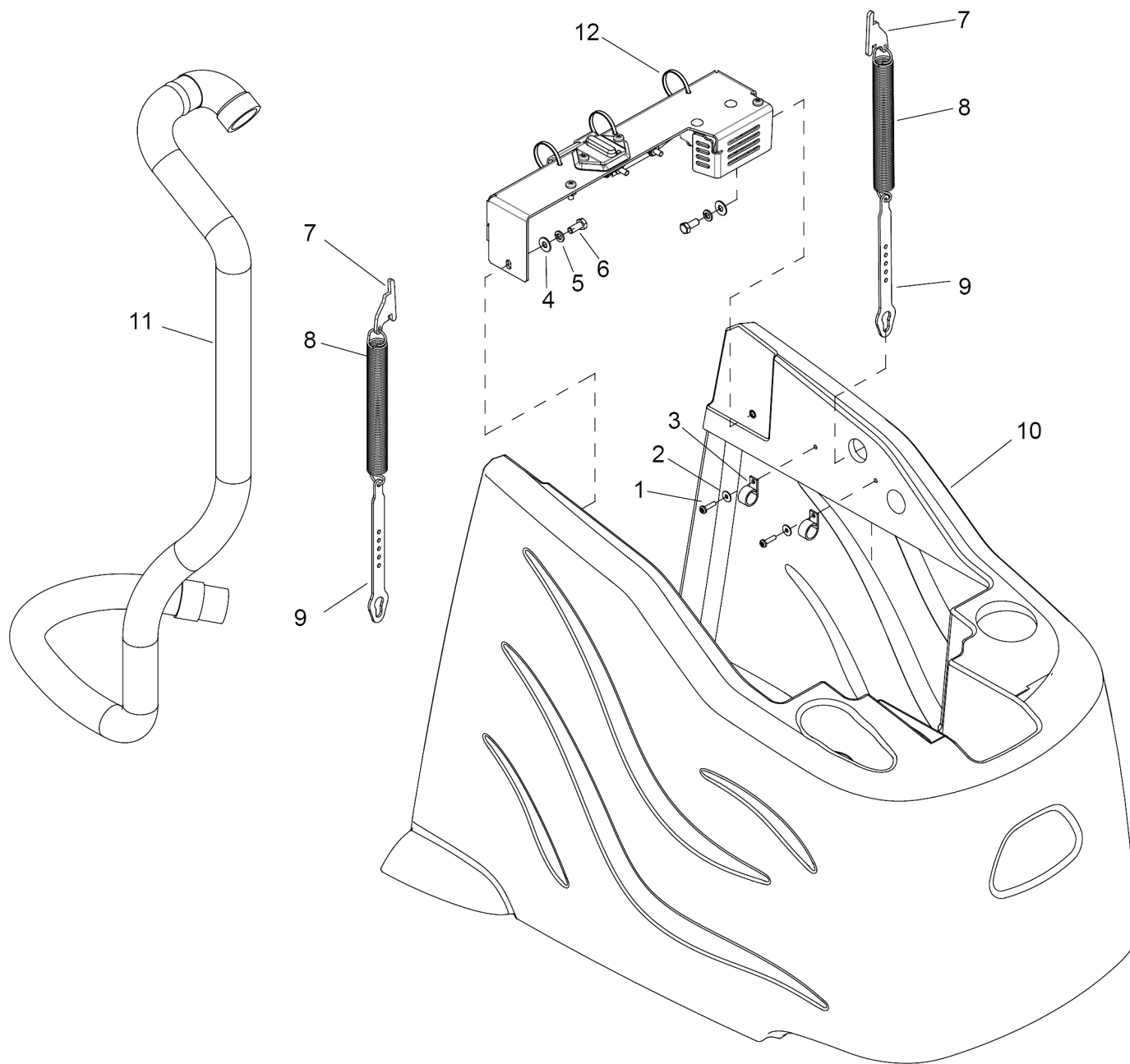
POS	Article no.	Description	Quantity	Unit	Remark
10		BODY BRACE	1	PC	
20		BODY LOWER	1	PC	
30		BODY LOWER MOUNTING	1	PC	
40		BUMPER	1	PC	
50		BURNISHING DECK	1	PC	
60		BURNISHING DECK MOUNTING	1	PC	
70		BURNISHING DECK LIFT	1	PC	
80		BURNISHING DECK - PAD DRIVER	1	PC	
90		CONSOLE - BAG ENCLOSURE	1	PC	
100		CONSOLE - HINGE	1	PC	
110		CONTROL PANEL 1	1	PC	
120		CONTROL PANEL 2	1	PC	
130		CHARGER - ON BOARD	1	PC	1.008-094.0, 096, 097, 101
140		DECALS	1	PC	
150		SLEW/STEERING	1	PC	
160		DRIVE LOWER	1	PC	
170		FRAME & REAR WHEELS	1	PC	
180		DRIVE MOUNTING	1	PC	
190		PEDAL PLATFORM	1	PC	
200		PEDAL PLATFORM MOUNTING	1	PC	
210		STEERING	1	PC	
220		VACUUM	1	PC	1.008-099.0, 100, 101
230		BATTERY CABLE ASM, iGLOSS 20	1	PC	
240		BATTERY	1	PC	
250	8.600-015.0	Battery charger	1	PC	1.008-096.0, 100
250	8.635-631.0	CHRGR, 36V 21A SB175 ALG 42	1	PC	1.008-093.0
250	8.641-487.0	CHRGR, 36V 21A SB175 ALG 3	1	PC	1.008-095.0, 099
250	8.641-493.0	CHRGR, 36V 21A SB175 ALG 62	1	PC	1.008-092.0,
260	8.635-833.0	GRP, BATTERY TRAY, iGLOSS 20	1	PC	1.008-092.0, 093, 094
260	8.636-303.0	GRP, BATTERY TRAY SM, iGLOSS 20	1	PC	1.008-095.0, 096, 097, 098, 099, 100, 101

10 BODY BRACE



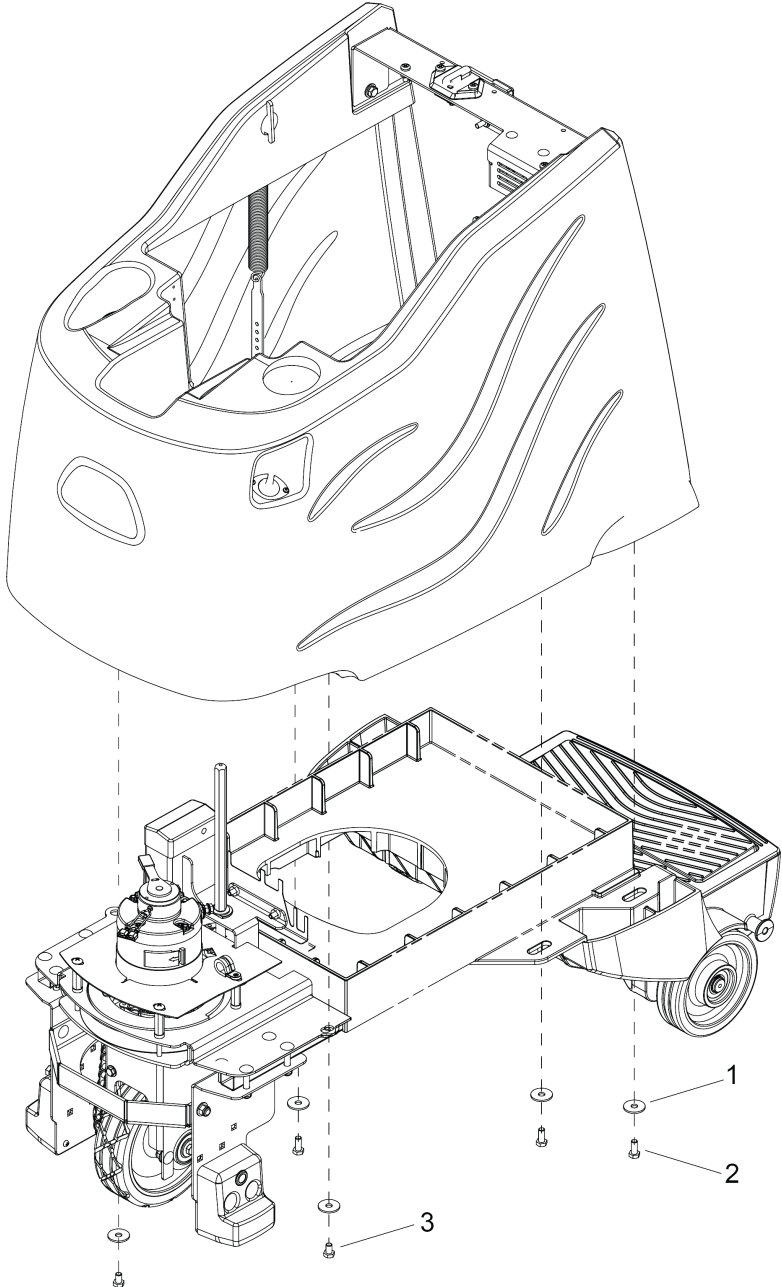
10 BODY BRACE

POS	Article no.	Description	Quantity	Unit
1	8.627-382.0	SCREW, 1/4-20 X 1.25 HHMS SS	2	PC
2	8.601-063.0	WASHER, 1/4 SS	6	PC
3	8.634-002.0	COVER, PANEL MNT BREAKER	1	PC
4	8.627-512.0	SCREW, 1/4-20 X .75 PHPNHMS STL ZNPLT	4	PC
5	8.634-003.0	BREAKER, 100A CIRCUIT	1	PC
6	8.601-068.0	WASHER, 3/8 NYL	2	PC
7	8.622-977.0	BLOCK, SHUNT MOUNT	1	PC
8	8.600-570.0	NUT, 10-32 HEXSTRW LK STL ZNPLT	2	PC
9	8.627-179.0	NUT, 6-32 HEX BRS	2	PC
10	8.627-960.0	WASHER, 6 FLT BRS	4	PC
11	8.625-360.0	SHUNT, 50MV 70AMP	1	PC
12	8.627-625.0	SCREW, 6-32 X .375 SLTDPNHMS BRS	2	PC
13	8.627-077.0	Nut	2	PC
14	8.627-137.0	NUT, 1/4-20 SERFLG STL ZNPLT	6	PC
15	8.635-327.0	BRACKET, CONTACTOR COVER	1	PC
16	8.635-326.0	BRACKET, SOL TANK BRACE	1	PC
17	8.718-779.0	SCREW, 4MM X 6 MM, PAN HEAD	2	PC
18	8.645-425.0	SCREW M4X20 HEX SS	2	PC
19	8.645-424.0	SCREW M5X8 HEX SS	4	PC
20	8.645-286.0	ASSEMBLY HMC AND HEAT SINKS	1	PC
21	8.633-181.0	WASHER, M5 SPL SS	4	PC
22	8.617-332.0	WASHER, M4 FLT SS DIN125	4	PC
23	8.645-423.0	NUT M4 SS	2	PC



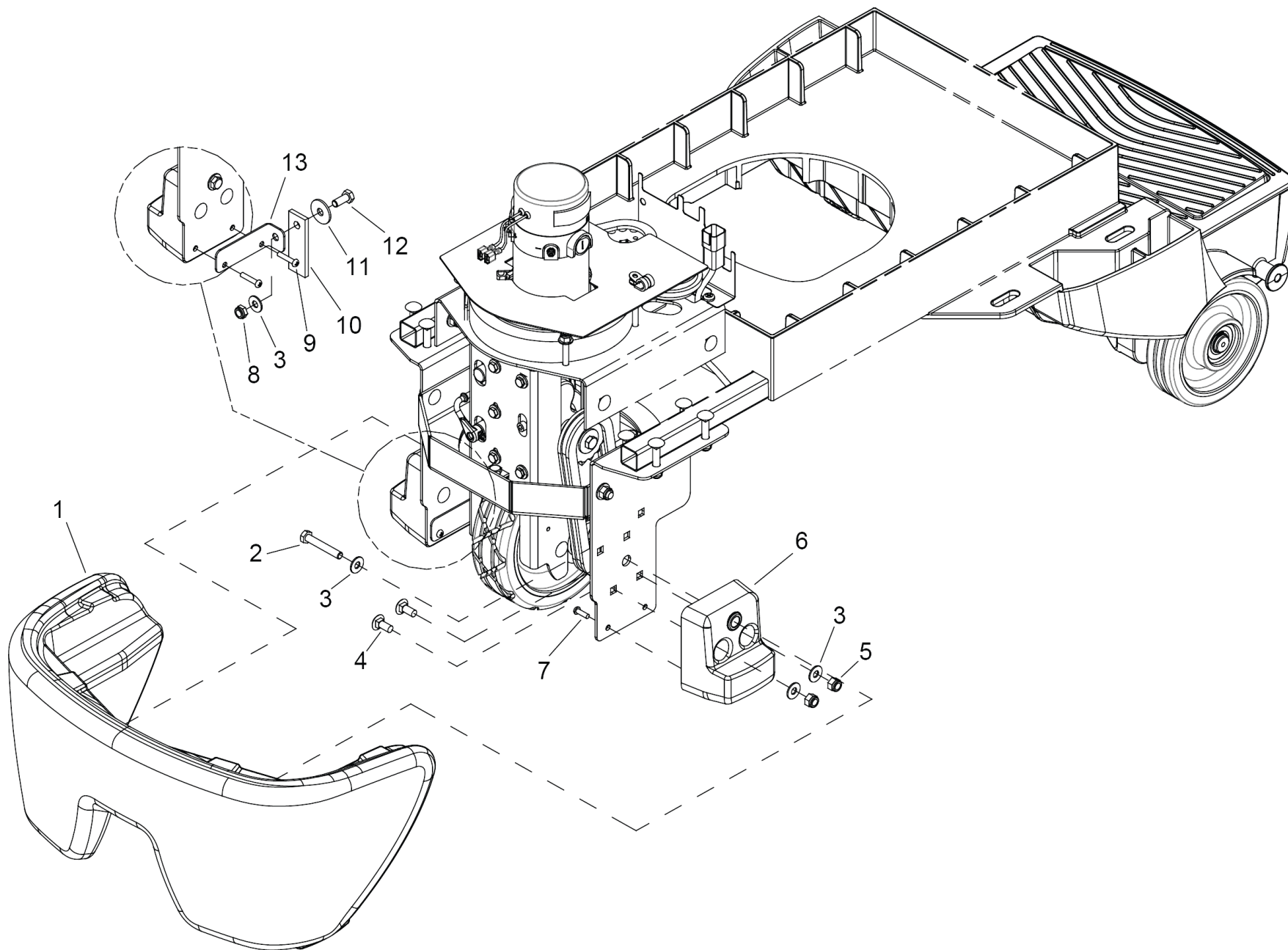
20 BODY LOWER

POS	Article no.	Description	Quantity	Unit	Remark
1	8.627-398.0	SCREW, 10-32 X .75 PHPNHMS SS	2	PC	
2	8.601-065.0	WASHER, .203 X .562 X .040 FLT	2	PC	
3	8.635-499.0	CLAMP, .75 DIA, FLEX LOOP, NYLON	2	PC	
4	8.601-067.0	WASHER, 5/16 FLT SS	2	PC	
5	8.627-913.0	Washer 5/16 SPLIT LOCK PLTD	4	PC	
6	8.627-678.0	SCREW, 5/16-18 X .75 HHCS SS	2	PC	
7	8.635-457.0	BRACKET, SPRING, UPPER	2	PC	
8	8.635-322.0	SPRING, EXTENSION	2	PC	
9	8.635-372.0	BRACKET, SPRING, LOWER	2	PC	
9	8.638-495.0	Bracket spring lower	2	PC	Required for 86384690
10	8.636-841.0	Main body	1	PC	
10	8.637-770.0	MAIN BODY, NO OBC, GRAY, TRIM	1	PC	SHELF CHARGER MODELS ONLY
11	8.635-328.0	Hose	1	PC	
12	8.626-494.0	Cable tie 11.38" UL/CSA	3	PC	



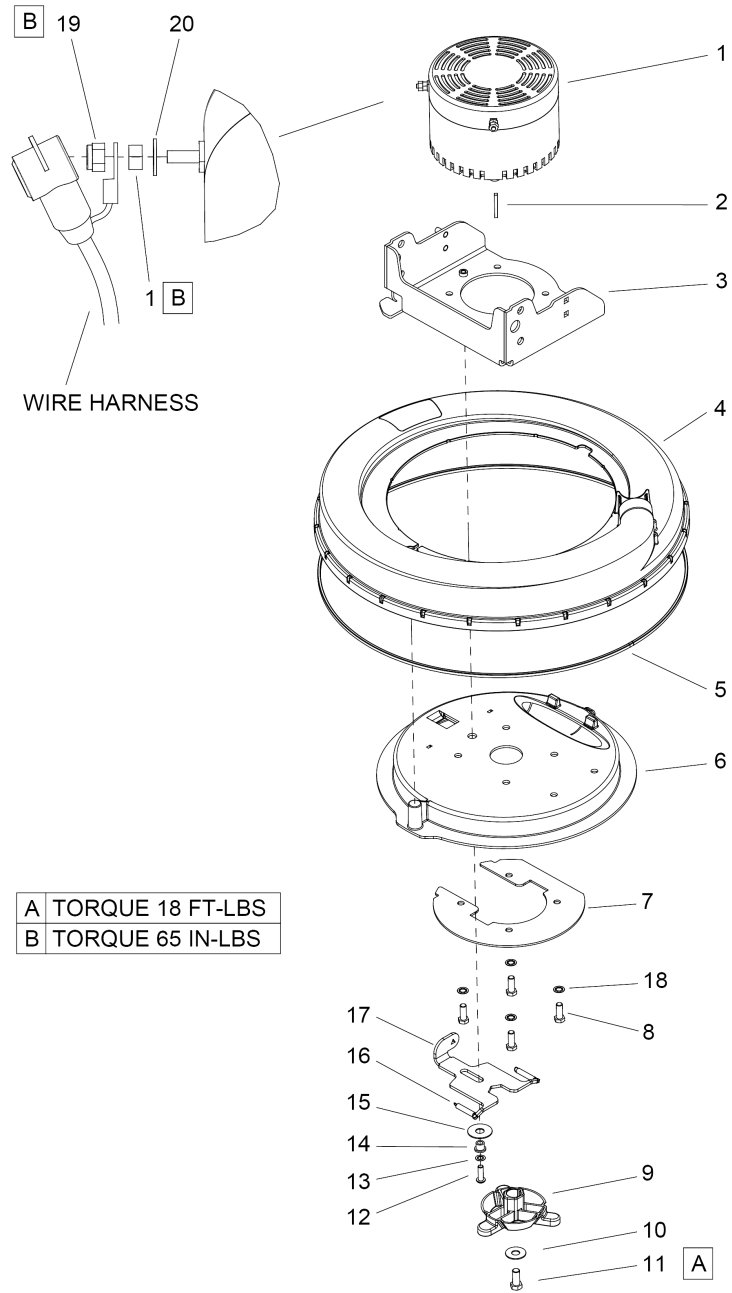
30 BODY LOWER MOUNTING

POS	Article no.	Description	Quantity	Unit
1	8.627-963.0	WASHER, 5/16 X 1.13 X .09 FLT	5	PC
2	8.600-676.0	SCREW, 5/16-18 X .75 HHCS	3	PC
3	8.627-518.0	SCREW, 5/16-18 X .5 STL GR5 ZNPLT	2	PC



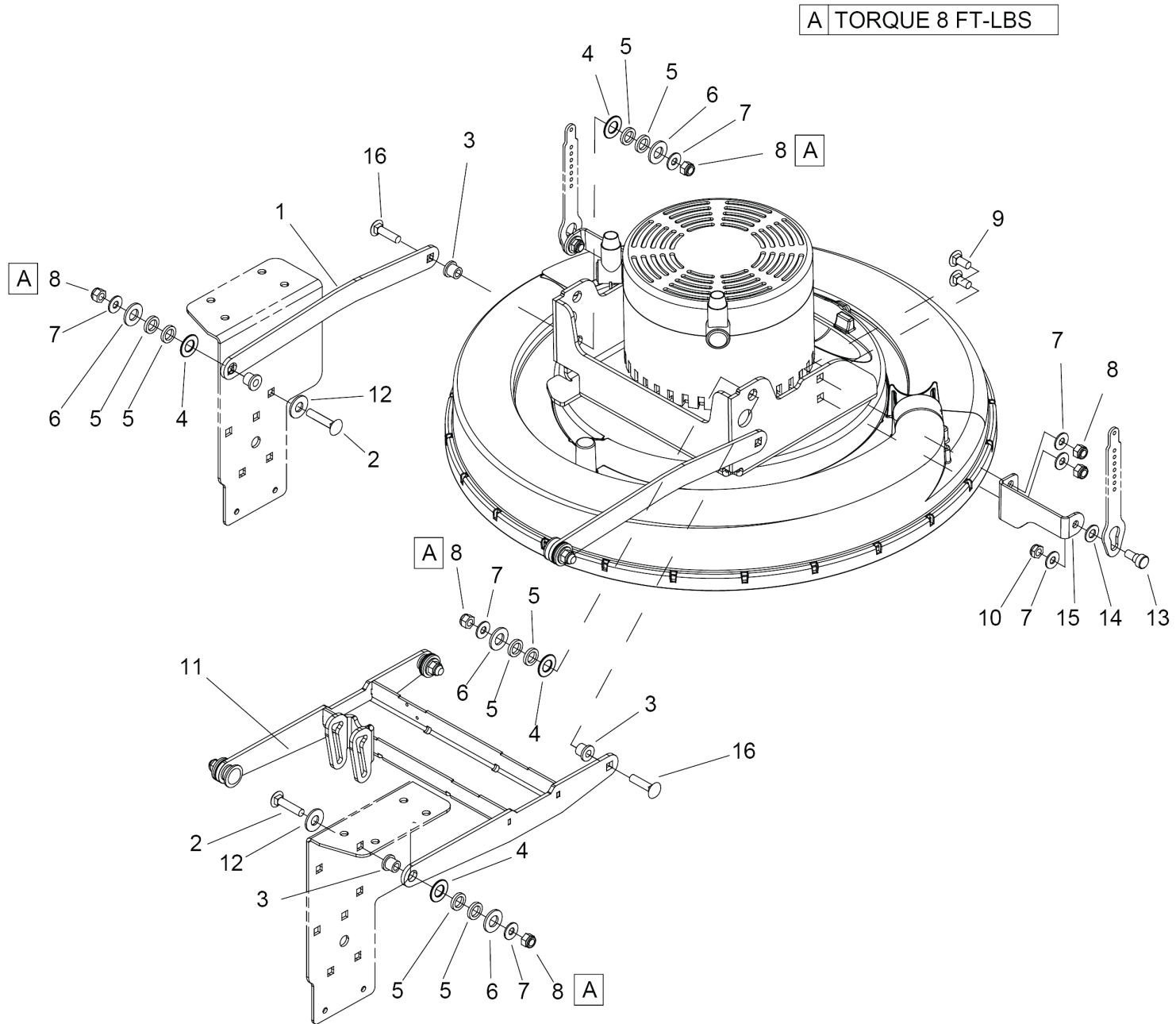
40 BUMPER

POS	Article no.	Description	Quantity	Unit
1	8.636-682.0	BUMPER, TRIM, BLACK	1	PC
2	8.627-698.0	SCREW, 5/16-18 X 2 HHCS SS	2	PC
3	8.601-067.0	WASHER, 5/16 FLT SS	7	PC
4	8.627-607.0	SCREW, 5/16-18 X .75 CARR SS	4	PC
5	8.627-083.0	NUT, 5/16-18 HEX NYLOCK SS	4	PC
6	8.632-395.0	PAD TIP	2	PC
7	7.303-104.0	Screw 5x16 -A2-70 (IN6RD)	2	PC
8	8.627-184.0	NUT, 5/16-18 HEXTHIN NYLOCK SS	1	PC
9	8.632-791.0	SCREW, KA50 X 25 PTOVHS STL WN1412 ZNPLT	2	PC
10	8.625-613.0	STRAP, STATIC, .2T X 1W X 3L	1	PC
11	8.627-963.0	WASHER, 5/16 X 1.13 X .09 FLT	1	PC
12	8.600-676.0	SCREW, 5/16-18 X .75 HHCS	1	PC
13	8.635-951.0	BRKT, STATIC STRAP	1	PC



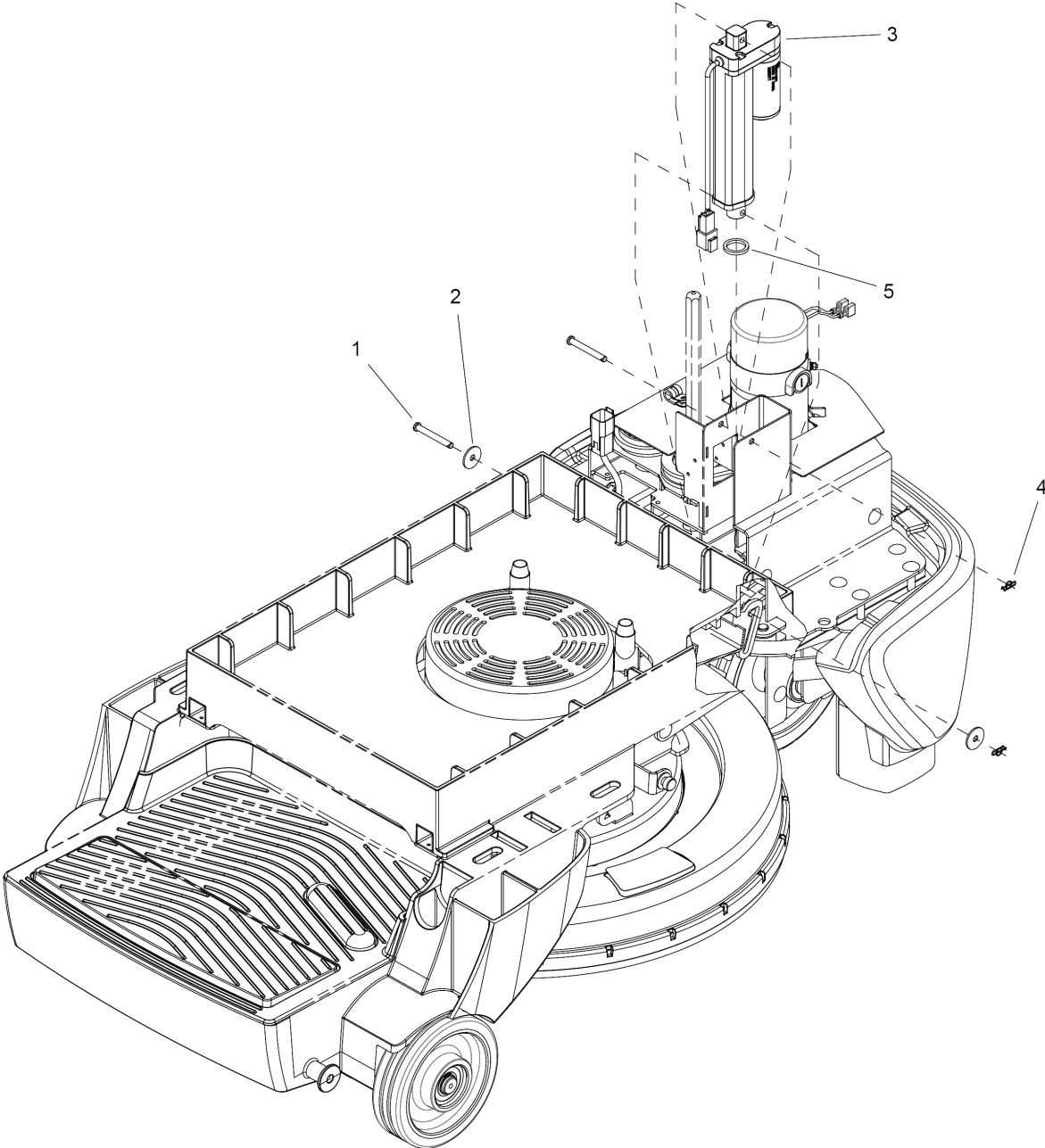
50 BURNISHING DECK

POS	Article no.	Description	Quantity	Unit
-	8.634-801.0	Brush set	1	PC
1	8.638-469.0	Brush motor 2.2 kW	1	PC
2	8.628-685.0	KEY, 3/16 X 3/16 X 1.5 LCST GR1018	1	PC
3	8.635-347.0	BRACKET, MOTOR LIFT	1	PC
4	8.635-291.0	SHROUD, OUTER	1	PC
5	8.635-378.0	Brush	1	PC
6	8.635-290.0	SHROUD, INNER	1	PC
7	8.635-375.0	PLATE, SUPPORT, INNER SHROUD	1	PC
8	8.627-692.0	SCREW, 3/8-16 X 1 HHCS SS NP	4	PC
9	8.637-214.0	HUB, PAD DRIVER	1	PC
10	8.601-071.0	WASHER, 7/16 FLT STL YW ZNPLT	1	PC
11	8.627-754.0	SCREW, 7/16-20 X 1 HHCS STL GR5 ZNPLT	1	PC
12	8.600-693.0	SCREW, 5/16-18 X 1 SCHBTNHCS SS	1	PC
13	8.633-099.0	WASHER, 5/16 INTLK SS	1	PC
14	8.622-884.0	BUSHING, .314 X .502 X .5 FLG	1	PC
15	8.627-903.0	WASHER, .515 X 1.47 X .05 FLT NYL	1	PC
16	8.600-791.0	Spring EXT .31D X 2.0L X .03W	2	PC
17	8.635-376.0	BRACKET, MOTOR LOCK	1	PC
18	8.627-911.0	WASHER, 3/8 INTLK	4	PC
19	8.643-726.0	Nut 5/16-18 HEX LK BRS	2	PC
20	8.601-067.0	WASHER, 5/16 FLT SS	2	PC



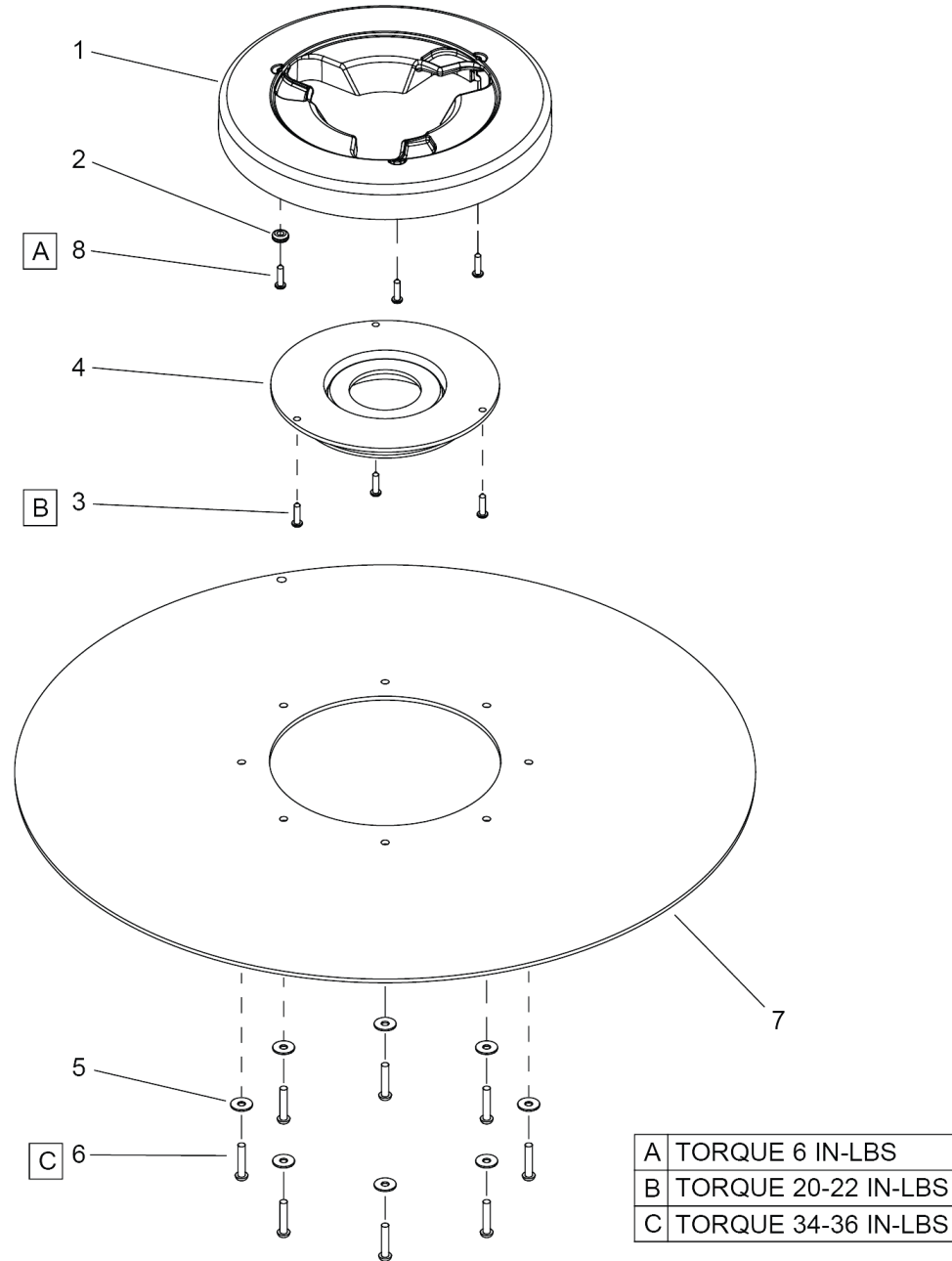
60 BURNISHING DECK MOUNTING

POS	Article no.	Description	Quantity	Unit
1	8.638-852.0	DECK LINKAGE ARM	2	PC
2	8.627-747.0	SCREW, 5/16-18 X 1.5 CARR SS	4	PC
3	8.622-884.0	BUSHING, .314 X .502 X .5 FLG	8	PC
4	8.625-941.0	WASHER, .51 X 10 X .063 THR	8	PC
5	8.627-935.0	WASHER, 1/2 X .771 X .013 WV	16	PC
6	8.625-942.0	WASHER, .510 X 1 THR	8	PC
7	8.601-067.0	WASHER, 5/16 FLT SS	14	PC
8	8.627-083.0	NUT, 5/16-18 HEX NYLOCK SS	12	PC
9	8.627-607.0	SCREW, 5/16-18 X .75 CARR SS	2	PC
10	8.627-184.0	NUT, 5/16-18 HEXTHIN NYLOCK SS	2	PC
11	8.638-850.0	TOP LINK ASSY	1	PC
12	8.601-077.0	WASHER, 7/16 X1 X .08 FLT SS	4	PC
13	8.635-381.0	SHOULDER BOLT, 3/8 X .25L SS	2	PC
14	8.601-068.0	WASHER, 3/8 NYL	2	PC
15	8.635-380.0	Holder	2	PC
16	8.627-703.0	SCREW, 5/16-18 X 1.25 CARR SS	4	PC



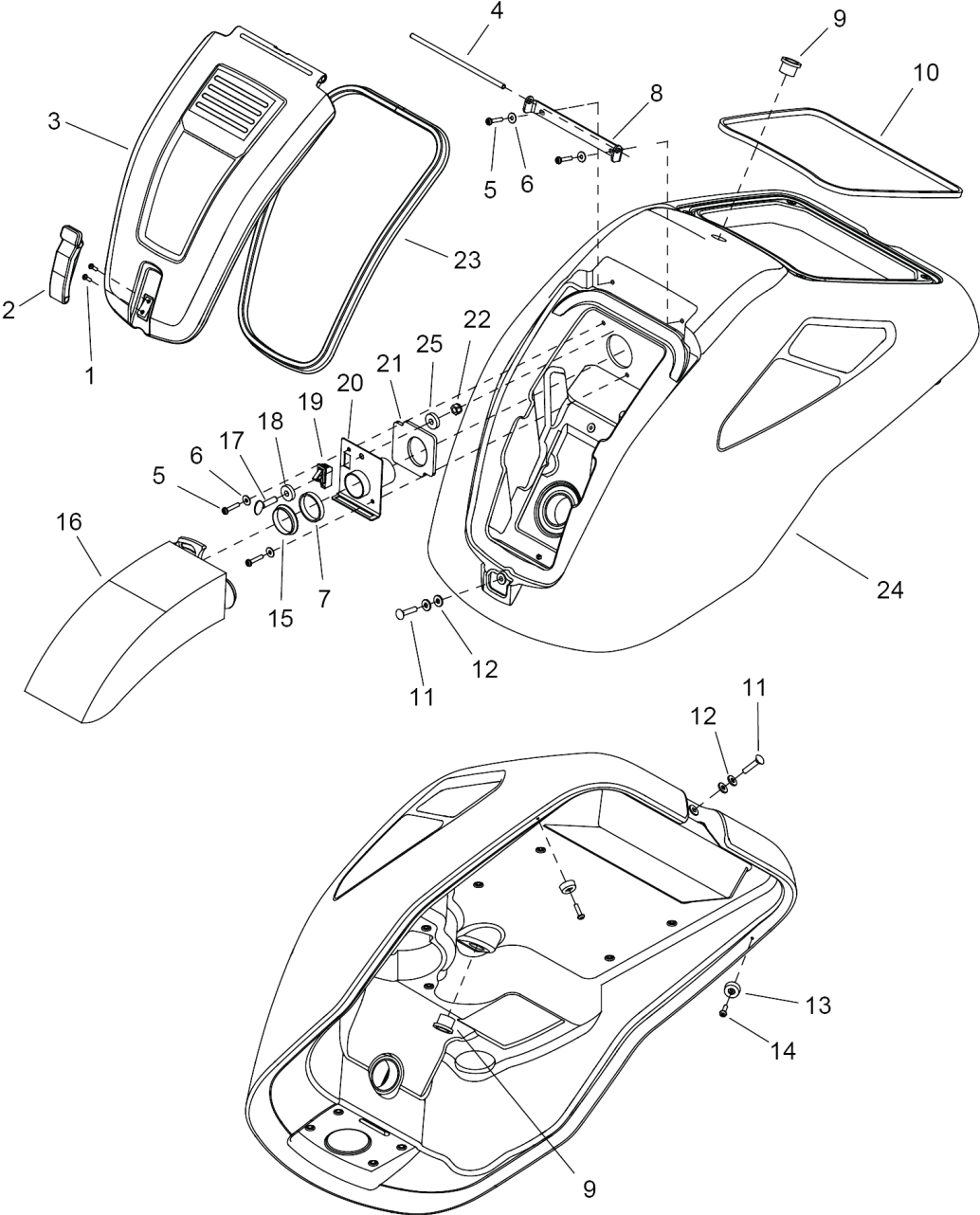
70 BURNISHING DECK LIFT

POS	Article no.	Description	Quantity	Unit
1	8.632-804.0	PIN, CLEVIS 1/4 X 2 STL ZNPLT	2	PC
2	8.635-475.0	WASHER, .264 X 1 X .07 NYL BLK	2	PC
3	8.632-088.0	ACT, 36VDC, 3.0" STK, 8.74 LNG	1	PC
4	8.600-865.0	PIN, COTTER RING 1/4 X .041 X .844	2	PC
5	8.634-224.0	SPACER, .81 X 1.06 X .125	1	PC



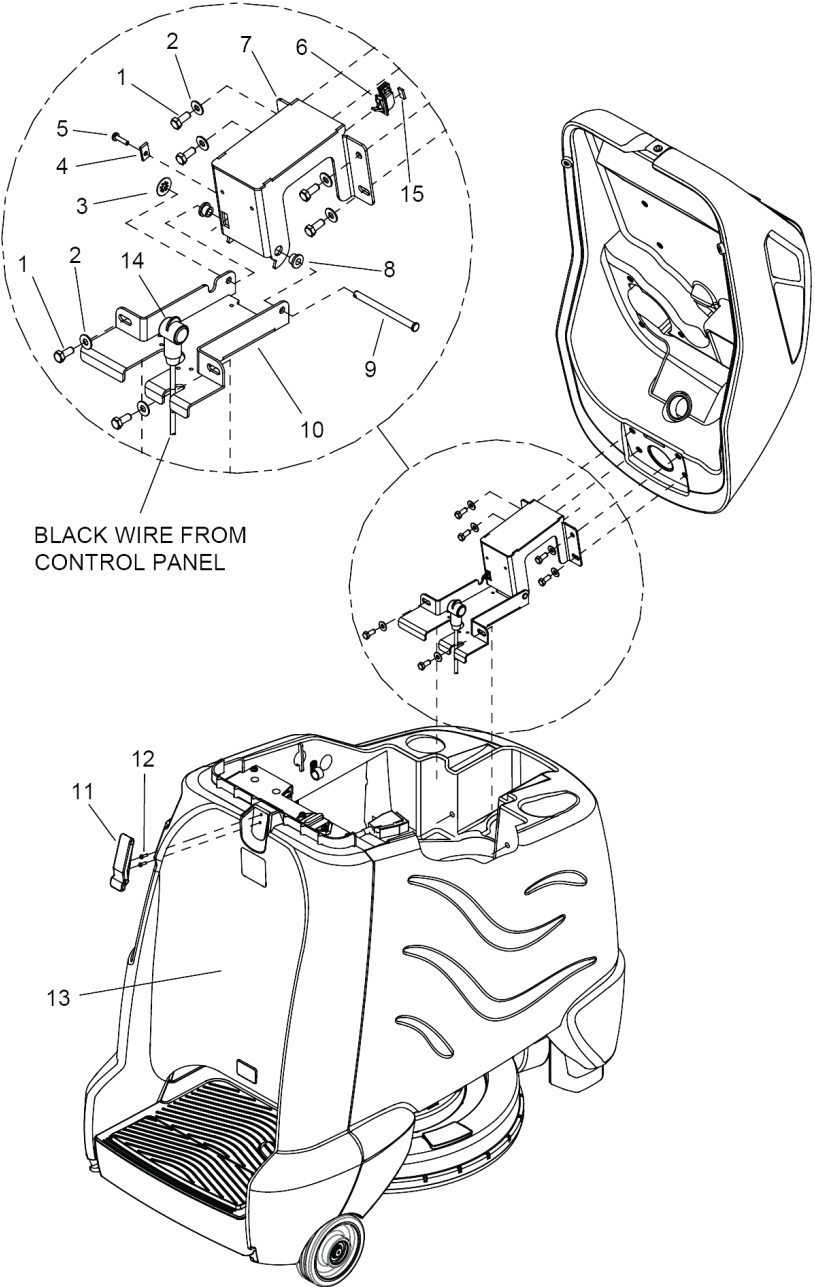
80 BURNISHING DECK - PAD DRIVER

POS	Article no.	Description	Quantity	Unit
1	8.635-246.0	HUB, PAD DRIVER	1	PC
2	8.635-565.0	GROMMET, .155ID X .438OD X .188T	1	PC
3	8.617-314.0	SCREW, KA40 X 10 OVHCS STL WIN1412 ZNPLT	3	PC
4	8.635-562.0	RETAINER, PAD CENTER LOCK	1	PC
5	8.617-333.0	WASHER, M5 SS ISO7093	8	PC
6	8.632-791.0	SCREW, KA50 X 25 PTOVHS STL WN1412 ZNPLT	8	PC
7	8.635-561.0	Pad drive	1	PC
8	8.635-166.0	SCREW, 6-19 X .5 PHPNH SMS HL STL ZNPLT	3	PC
-	8.635-845.0	ASM, PAD DRIVER iGLOSS 20	1	PC



90 CONSOLE - BAG ENCLOSURE

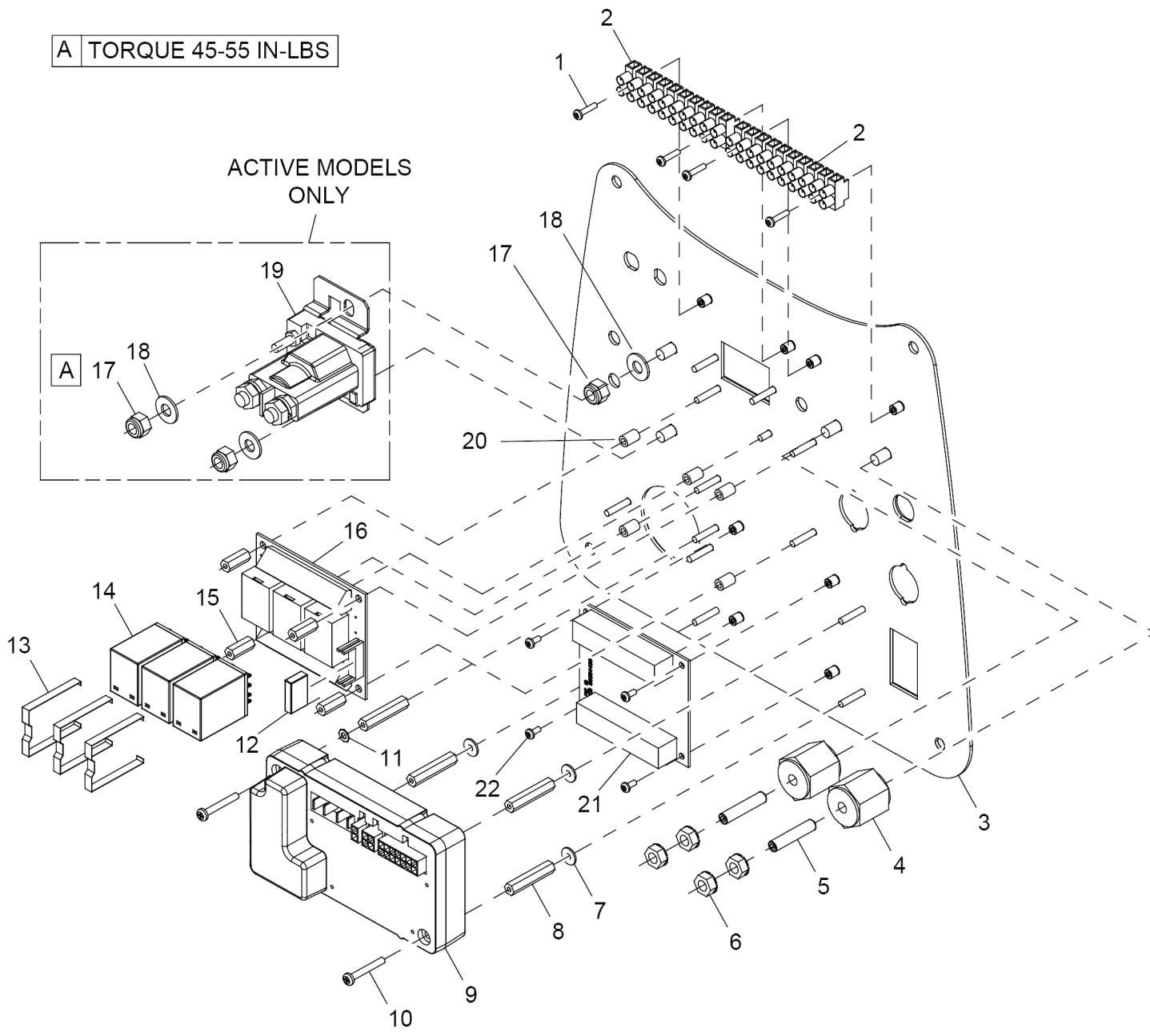
POS	Article no.	Description	Quantity	Unit	Remark
1	8.617-314.0	SCREW, KA40 X 10 OVHCS STL WIN1412 ZNPLT	2	PC	
2	8.616-180.0	Snap fastener	1	PC	
3	8.636-843.0	COVER, BAG ENCL, BLK	1	PC	
4	8.635-365.0	SHAFT, .25 X 7.3, SS	1	PC	
5	8.627-581.0	SCREW, 10-32 X 1 PHPNHMS STL BLKOX	4	PC	
6	8.601-065.0	WASHER, .203 X .562 X .040 FLT	4	PC	
7	8.635-926.0	WASHER, 1.5 X 1.7 X .19 NPRN	1	PC	
8	8.635-317.0	BRKT, HINGE	1	PC	
9	8.622-879.0	BUSHING, .753 X .875 X .75 FLG	2	PC	
10	8.632-783.0	GASKET,.188X.31X41.0	1	PC	
11	8.627-633.0	SCREW, 1/4-20 X 1.25 CARR	2	PC	
12	8.627-952.0	WASHER, 1/4 FLT STL BLK ZNPLT	4	PC	
13	8.635-613.0	BUMPER, 7/8OD X 13/32H, RUBBER	2	PC	
14	8.600-660.0	SCREW, 10-16 X .75 PHPNH HL SS	2	PC	
15	8.635-464.0	WASHER, 1.5ID SINK, RUBBER	1	PC	
16	8.633-398.0	FILTER BAGS (PACK OF10)	1	ZST	
17	8.600-704.0	SCREW, 5/16-18 X 1 THUMB SS	1	PC	
18	8.635-682.0	WASHER, .315 X .89 X .215 NYL	1	PC	
19	8.632-768.0	SWITCH, INTERLOCK	1	PC	
20	8.635-459.0	BRACKET, BAG MOUNT	1	PC	
21	8.635-463.0	GASKET, BAG MOUNT	1	PC	
22	8.627-184.0	NUT, 5/16-18 HEXTHIN NYLOCK SS	1	PC	
23	8.644-817.0	Bag cover gasket 43.6"	1	PC	
24	8.636-680.0	CONSOLE, iGLOSS 20 TRIMMED GRAY	1	PC	ACTIVE DUST CONTROL
24	8.639-950.0	CONSOLE, PASSIVE, TRIMMED	1	PC	PASSIVE DUST CONTROL
25	8.600-832.0	Spacer washer	1	PC	



BLACK WIRE FROM CONTROL PANEL

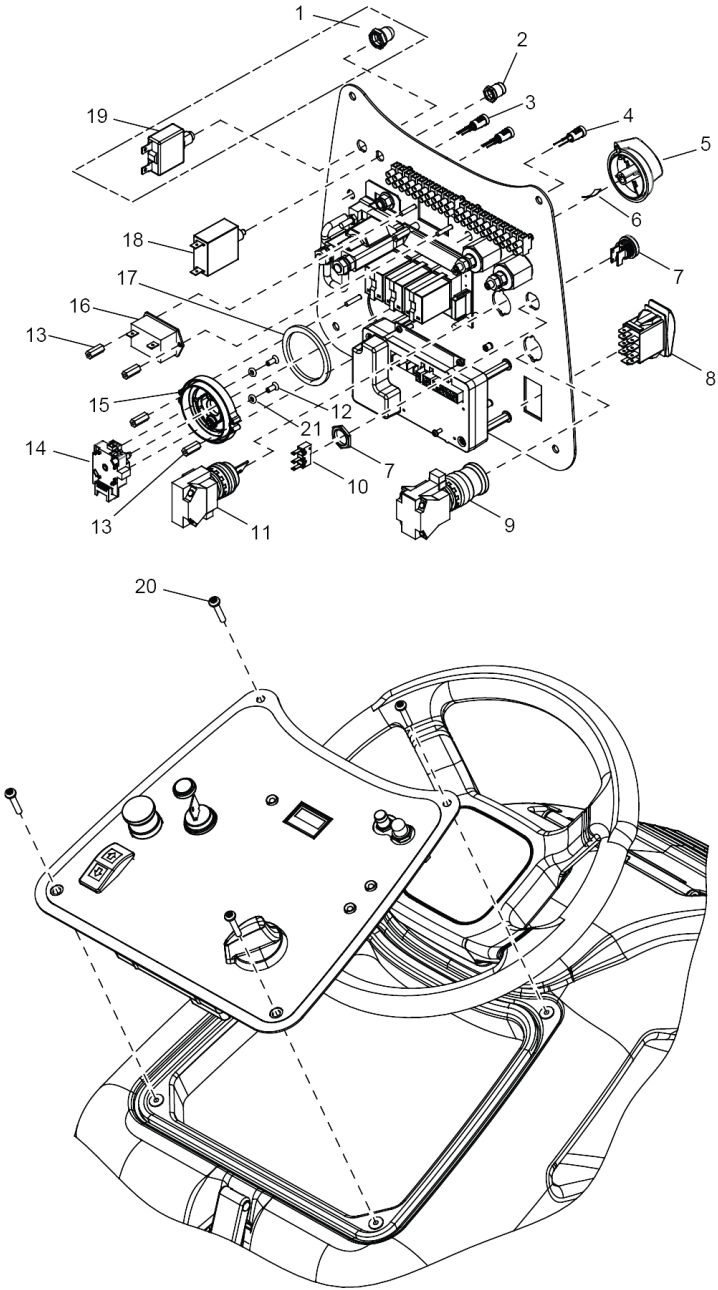
100 CONSOLE - HINGE

POS	Article no.	Description	Quantity	Unit
1	8.627-678.0	SCREW, 5/16-18 X .75 HHCS SS	6	PC
2	8.601-067.0	WASHER, 5/16 FLT SS	6	PC
3	8.632-886.0	NUT, 5/16 PUSH LK STL ZNPLT	1	PC
4	8.627-086.0	NUT, 10-24 TYPEU BLK	1	PC
5	8.627-711.0	SCREW, 10-24 X .75 PHPNHMS SS	1	PC
6	8.632-768.0	SWITCH, INTERLOCK	1	PC
7	8.632-632.0	Holder hinge above	1	PC
8	8.622-899.0	BUSHING, .314 X .502 X .375 FLG BRZ	2	PC
9	8.632-634.0	PIN, CLEVIS 5/16 X 4 STL ZNPLT	1	PC
10	8.635-501.0	BRKT, HINGE LOWER	1	PC
11	8.616-180.0	Snap fastener	1	PC
12	8.617-314.0	SCREW, KA40 X 10 OVHCS STL WIN1412 ZNPLT	2	PC
13	8.636-836.0	PANEL, BACK TRIMMED, BLK	1	PC
14	8.600-892.0	BOOT, RUBBER TERM. ISOLATOR	1	PC



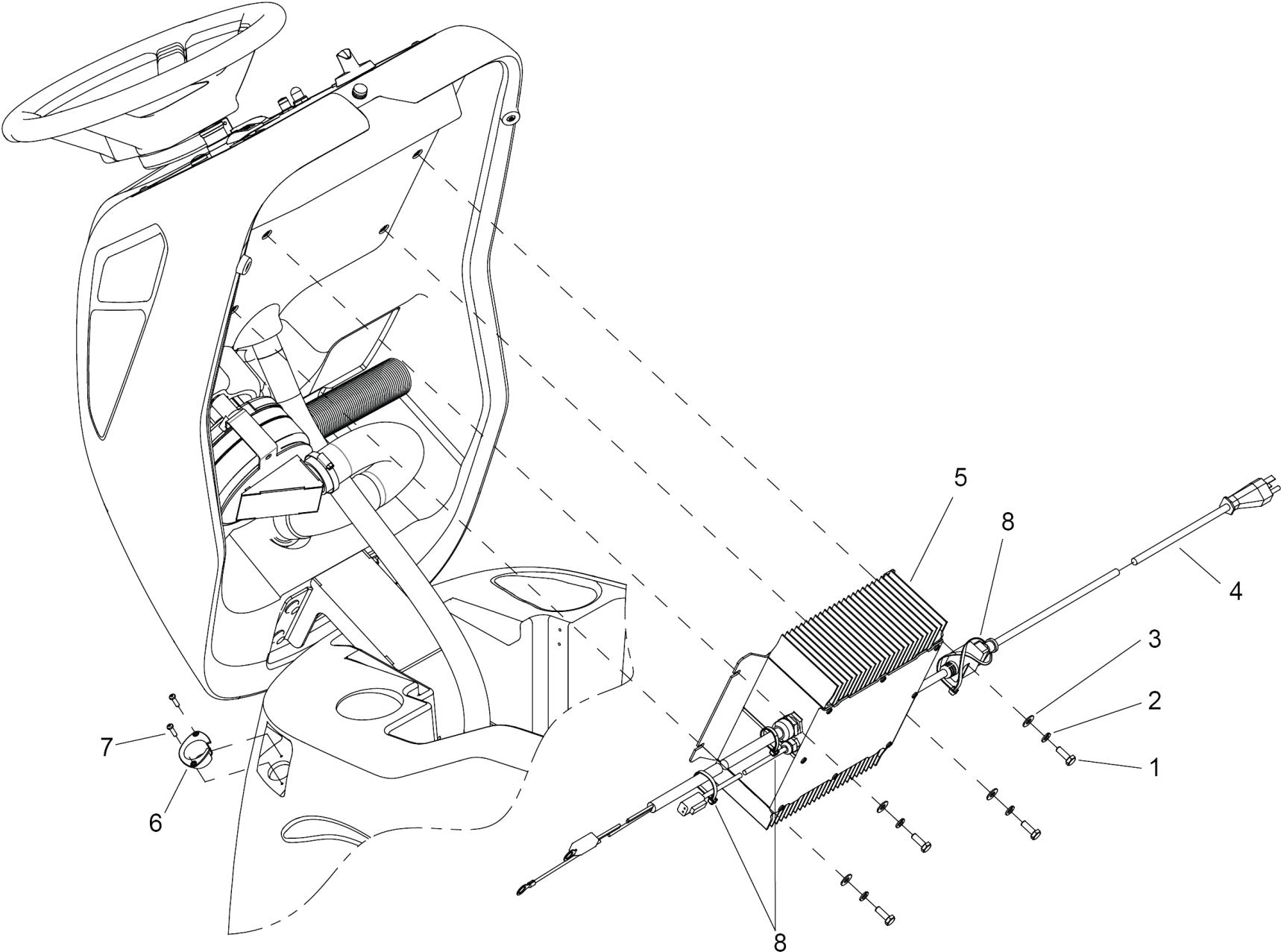
110 CONTROL PANEL 1

POS	Article no.	Description	Quantity	Unit
1	8.627-526.0	SCREW, 4-40 X .5 PHPNHMS STL ZNPLT	4	PC
2	8.632-639.0	CONN, 8MM PITCH, 10 POS	2	PC
3	8.635-249.0	PANEL, CONTROL iGLOSS 20	1	PC
4	8.625-591.0	STANDOFF, 1/4-20 X 1.0 HEX INS	2	PC
5	8.600-685.0	SCREW, 1/4-20 X 1.25 SCHSET CP SS	1	PC
6	8.600-571.0	NUT, 1/4-20 HEXSTRW LK STL ZNPLT	4	PC
7	8.627-945.0	WASHER, 6 FLT STL ZNPLT	3	PC
8	8.635-486.0	Standoff	4	PC
9	8.638-597.0	Controller C2B	1	PC
10	8.627-555.0	SCREW, 6-32 X 1.25 PHPNHMS STL ZNPLT	2	PC
11	8.627-902.0	WASHER, 6 EXTLK SS	1	PC
12	8.633-611.0	Relay two-pole	1	PC
13	8.633-610.0	Clip relay	3	PC
14	8.631-390.0	RELAY, 5A, 24V, 4PDT	3	PC
15	8.625-590.0	Distance pin	4	PC
16	8.633-609.0	CIRCUIT BOARD, 4 RELAY	1	PC
17	8.627-187.0	NUT, 1/4-20 HEXTHIN NYLOCK SS	2	PC
18	8.601-063.0	WASHER, 1/4 SS	2	PC
19	8.625-136.0	Relay 36VDC 100A	1	PC
20	8.633-721.0	SPACER, .14ID X .28OD X .38, NYL	5	PC
21	8.635-443.0	Electronics printed circuit board	1	PC
22	8.627-457.0	SCREW, 4-40 X .25 PHPNHMS STL ZNPLT	4	PC



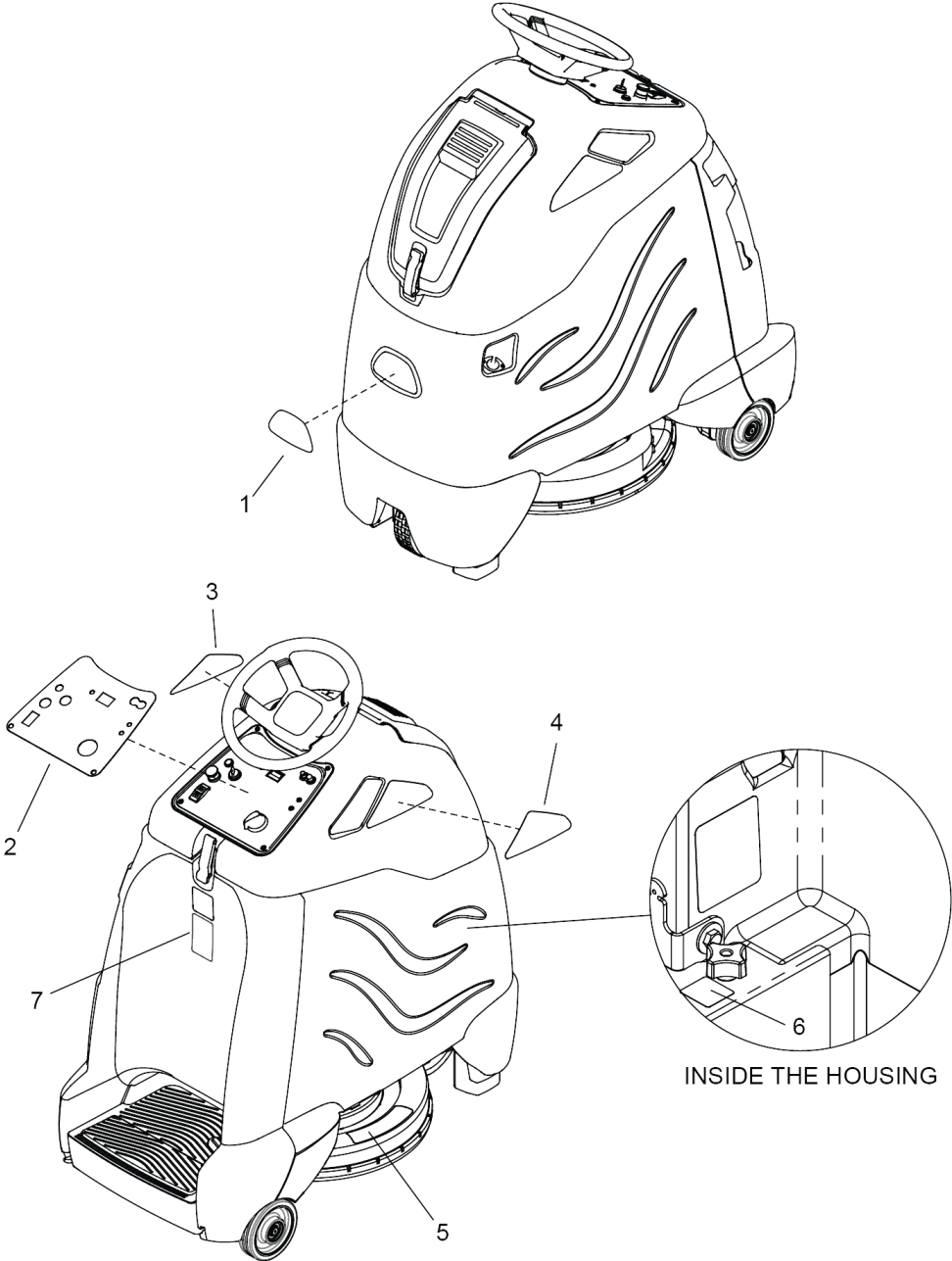
120 CONTROL PANEL 2

POS	Article no.	Description	Quantity	Unit
1	8.633-251.0	BOOT, SEAL PUSH BUTTON 11MM	1	PC
2	8.600-126.0	BOOT, CB 3/8-32 UNS	1	PC
3	8.634-864.0	Pilot lamp LED filter	2	PC
4	8.634-896.0	Pilot lamp LED battery	1	PC
5	5.321-738.0	Handhold operational concept	1	PC
6	6.313-014.0	Spring element	1	PC
7	8.629-520.0	ASM, BUTTON, BLACK, W/BEZEL	1	PC
8	8.631-395.0	SWITCH, SPDT 3 POSN MOM, ARROW	1	PC
9	8.629-259.0	SWITCH, E-STOP AKW CHARIOT	1	PC
10	8.629-278.0	SWITCH, MICRO	1	PC
11	8.600-717.0	Switch KEY TWO POSITION	1	PC
-	8.600-486.0	Key	1	PC
12	8.635-843.0	SCREW, M4 X 12 FLHMS SS ISO7046 NP	2	PC
13	8.625-590.0	Distance pin	4	PC
14	8.635-487.0	SWITCH, ROTARY	1	PC
15	8.635-456.0	BEZEL, ROTARY SWITCH	1	PC
16	8.631-547.0	METER, HOUR ICD	1	PC
17	8.635-481.0	GASKET, ROTARY SWITCH	1	PC
18	8.635-368.0	BREAKER, 1.5A CARLING MAGNETIC	1	PC
19	8.631-616.0	BREAKER, 18A, 250VAC, 32VDC	1	PC
20	8.637-141.0	SCREW, 10-32 X .75 TMS SS BLK	4	PC
21	8.635-844.0	O-RING, 4MM ID, 1.5MM THK, BUNA-N	2	PC



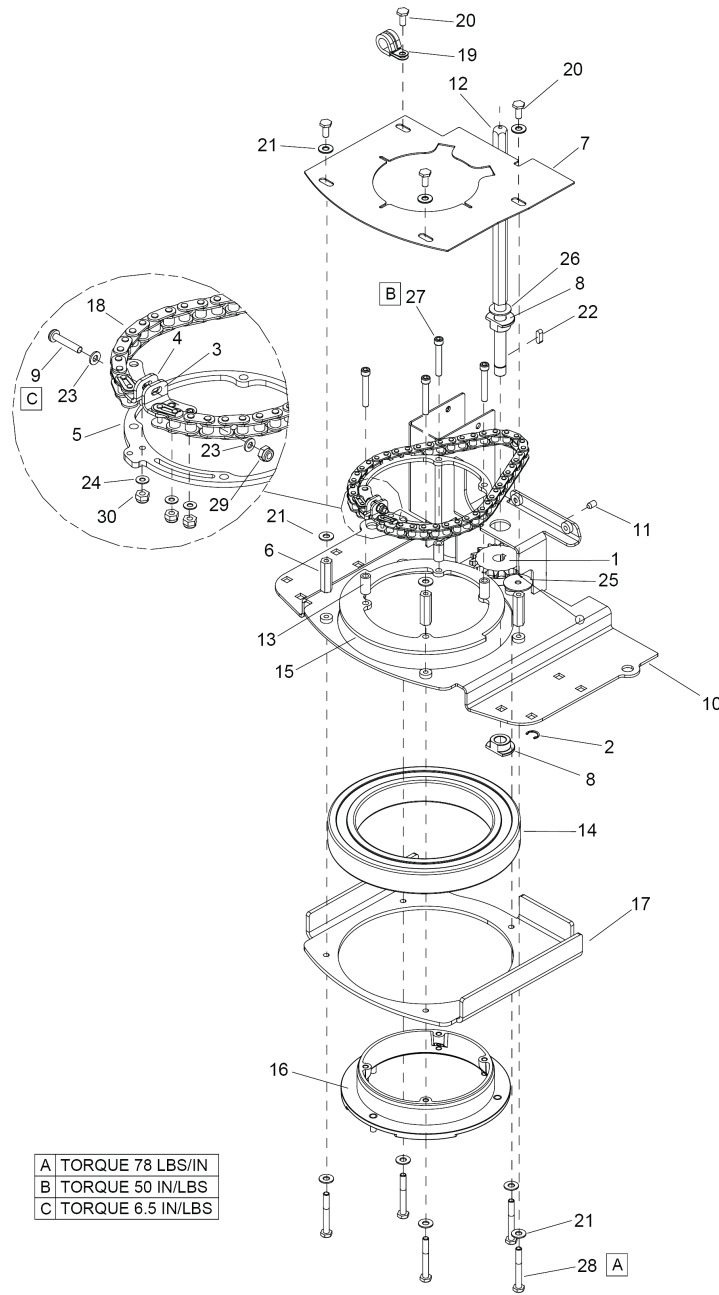
130 CHARGER - ON BOARD

POS	Article no.	Description	Quantity	Unit
1	8.627-378.0	SCREW, 1/4-20 X .75 HHCS SS NP	4	PC
2	8.601-078.0	WASHER, 1/4 SPL STL ZNPLT	4	PC
3	8.601-063.0	WASHER, 1/4 SS	4	PC
4	8.623-439.0	CORD ASM, 16/3 SJTW X 2M IEC	1	PC
5	8.635-330.0	CHRGR, 36V 21A OBC ALG 1	1	PC
6	8.634-443.0	GROMMET, CHARGE PLUG	1	PC
7	8.617-314.0	SCREW, KA40 X 10 OVHCS STL WIN1412 ZNPLT	2	PC
8	8.626-494.0	Cable tie 11.38" UL/CSA	3	PC



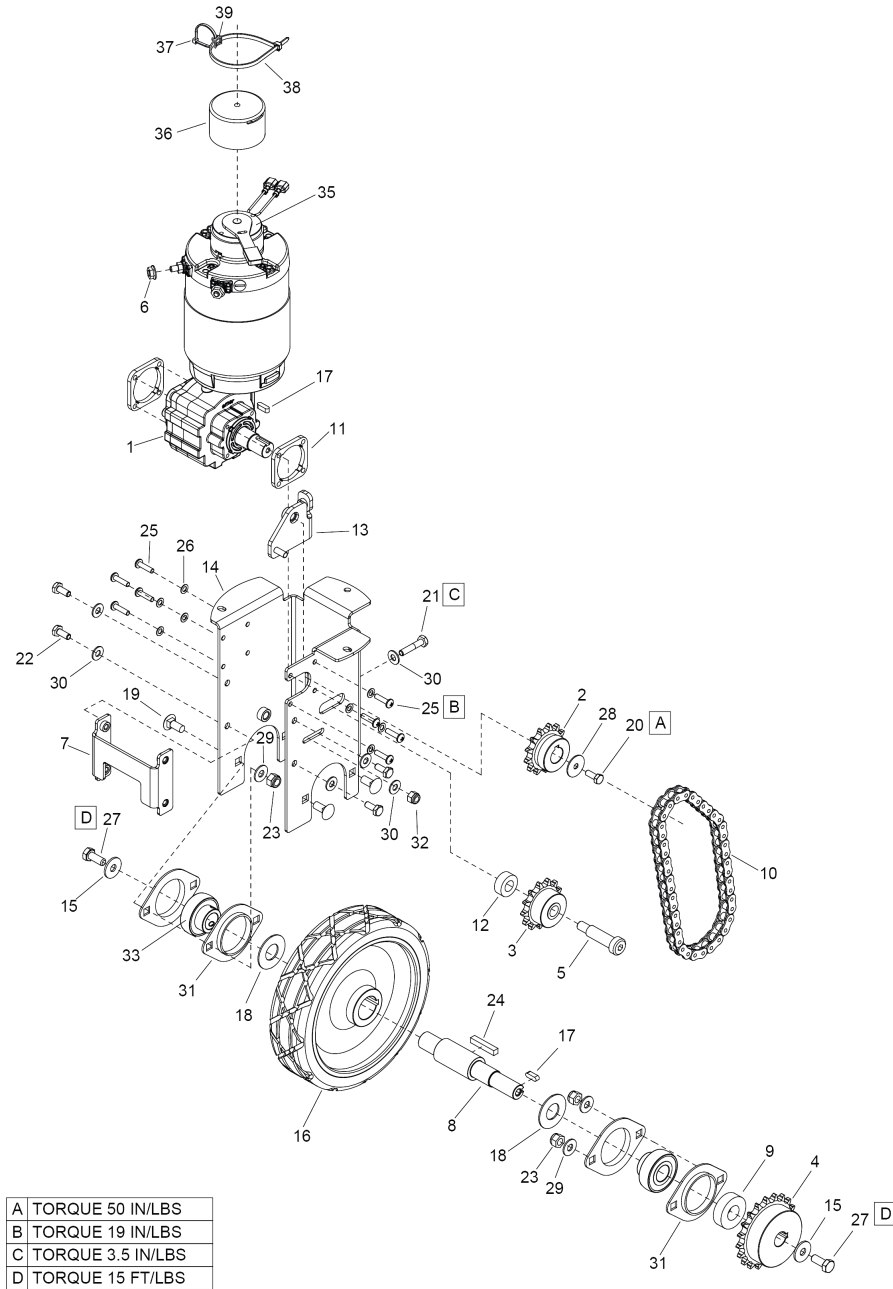
140 DECALS

POS	Article no.	Description	Quantity	Unit
1	8.633-500.0	Label AKW domed logo	1	PC
2	8.639-561.0	LABEL, PANEL, iGLOSS 20, DLX	1	PC
3	8.639-563.0	LABEL, IGLOSS 20 LEFT	1	PC
4	8.639-564.0	LABEL, IGLOSS 20 RIGHT	1	PC
5	8.639-680.0	LABEL, BURNISHER SHROUD	1	PC
6	8.638-508.0	LABEL, MANUAL	1	PC
7	8.643-126.0	Label QR code iGloss 20	1	PC



150 SLEW/STEERING

POS	Article no.	Description	Quantity	Unit
1	8.641-014.0	Gear wheel ANSI 40 14T	1	PC
2	8.640-964.0	Clip .50 SHAFT SIDE RETAIN	1	PC
3	8.640-957.0	Angle joint chain	1	PC
4	8.640-956.0	Angle joint chain	1	PC
5	8.640-955.0	Support plate chain	1	PC
6	8.640-952.0	Nut 1/4-20 X 1.5 CPL SS	4	PC
7	8.640-882.0	Plate chain guide C2	1	PC
8	8.640-864.0	Flanged bushing .503X1.25X.470 FLG 'D'	2	PC
9	8.640-858.0	Screw 10-32 X 1 TPNHMS SS BLK ZNPLT	1	PC
10	8.640-559.0	Support plate control system	1	PC
11	8.600-661.0	SCREW, 1/4-20 X .25 SCHSET KCP BLKOX	1	PC
12	8.640-556.0	SHAFT, STEERING SPROCKET	1	PC
13	8.640-551.0	Distance holder .25ID X .430OD X.83LG	4	PC
14	8.640-549.0	Bearing control system C2	1	PC
15	8.640-548.0	Plate C2	1	PC
16	8.640-547.0	Bearing screw connector bottom	1	PC
17	8.640-546.0	Plate c2	1	PC
18	8.640-534.0	Chain ANSI#40 X 21.5" W/2 MASTER	1	PC
19	8.636-387.0	CLAMP, 5/8" OD CUSHIONED	1	PC
20	8.627-383.0	SCREW, 1/4-20 X .5 HHCS SS NP	4	PC
21	8.601-063.0	WASHER, 1/4 SS	13	PC
22	8.632-671.0	KEY, 5 X 5 X 16MM CS GR1045	1	PC
23	8.627-919.0	WASHER, 10 FLT STL ZNPLT	2	PC
24	8.627-899.0	WASHER, 8 FLT	3	PC
25	8.627-894.0	WASHER, 1/4 STL ZNPLT	2	PC
26	8.627-885.0	WASHER, .506 X .94 X .06 NYL	1	PC
27	8.627-539.0	Screw 1/4-20 X 1.625 SCHCS STL ZNPLT	4	PC
28	8.627-385.0	SCREW, 1/4-20 X 2 HHCS SS	5	PC
29	8.627-099.0	NUT, 10-32 HEX NYLOCK SS	1	PC
30	8.627-085.0	Lock nut	3	PC

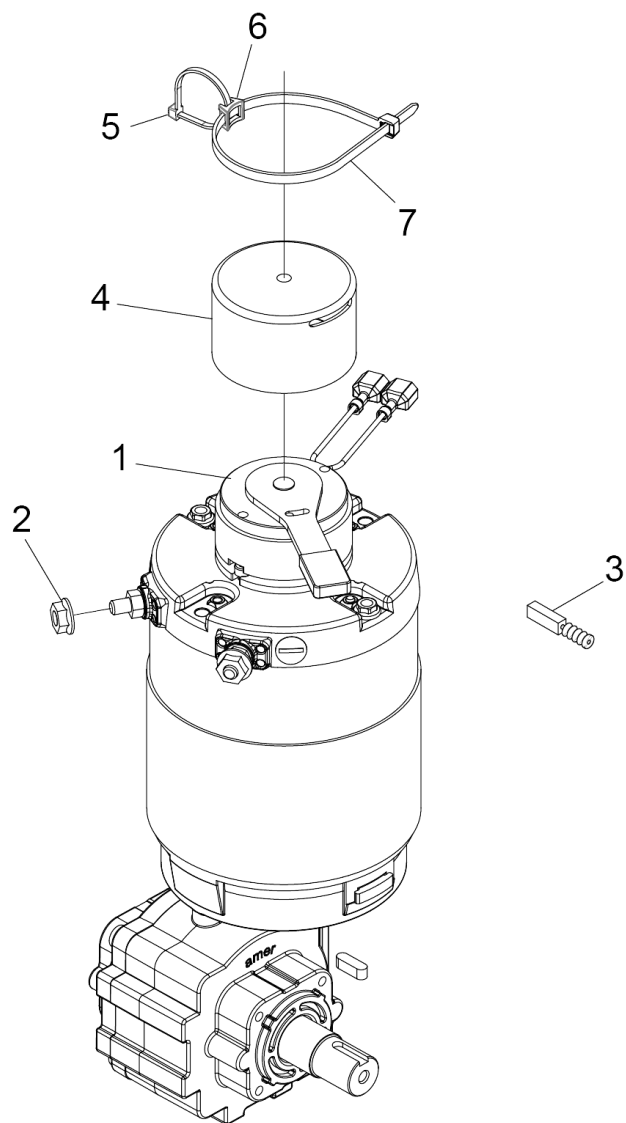


160 DRIVE LOWER

POS	Article no.	Description	Quantity	Unit
1	8.641-117.0	Traction motor C2	1	PC
2	8.640-996.0	Chain wheel transmission ANSI 40 13T	1	PC
3	8.640-995.0	Chain wheel transmission ANSI 40 13T IDLER	1	PC
4	8.640-994.0	Chain wheel transmission ANSI 40 20T	1	PC
5	8.640-591.0	Bolt 1/2 x 1.625	1	PC
6	8.638-411.0	Nut M6-1, HEX, SERFLG, DIN6923	2	PC
7	8.640-539.0	Retaining plate C2	1	PC
8	8.640-538.0	Axle drive wheel	1	PC
9	8.640-537.0	Distance holder C2	1	PC
10	8.640-536.0	Chain ANSI#40 X 21" W/MASTER	1	PC
11	8.640-535.0	Distance holder C2 MTR MNT HOUSING	2	PC
12	8.640-533.0	Distance holder C2	1	PC
13	8.640-532.0	Retaining plate C2	1	PC
14	8.640-531.0	Housing transmission C2	1	PC
15	7.312-289.0	Washer 8 -A2 ISO 7093-1	2	PC
16	8.636-917.0	Wheel 8.00 x 2.00, GRAY X-GRV	1	PC
17	8.632-671.0	KEY, 5 X 5 X 16MM CS GR1045	2	PC
18	8.632-167.0	WASHER, .748 SS	2	PC
19	8.627-607.0	SCREW, 5/16-18 X .75 CARR SS	4	PC
20	8.627-470.0	Screw M6x1,0x16	1	PC
21	8.627-462.0	SCREW, 1/4-20 X 1.25 HHMS STL GR5 ZNPLT	1	PC
22	8.627-375.0	SCREW, 1/4-20 X .625 HHCS SS NP	4	PC
23	8.627-083.0	NUT, 5/16-18 HEX NYLOCK SS	4	PC
24	8.621-964.0	KEY, 1/4 X 1/4 X 1.5 LCSTL GR1018	1	PC
25	8.638-412.0	Screw M5-0.8 X 16, TPNHMSSS	8	PC
26	8.613-733.0	WASHER, M5 SHPRF STL ZNPLT	8	PC
27	8.613-664.0	SCREW, M8-1.25 X 20 HHMS ZNPLT	2	PC
28	8.601-081.0	WASHER, 1/4 FNDR SS	1	PC
29	8.601-067.0	WASHER, 5/16 FLT SS	4	PC
30	8.601-063.0	WASHER, 1/4 SS	6	PC
31	8.600-861.0	Flanged bearing PRESS STEEL	4	PC
32	8.627-187.0	NUT, 1/4-20 HEXTHIN NYLOCK SS	1	PC
33	8.600-103.0	BEARING, 3/4 SPH BALL	2	PC

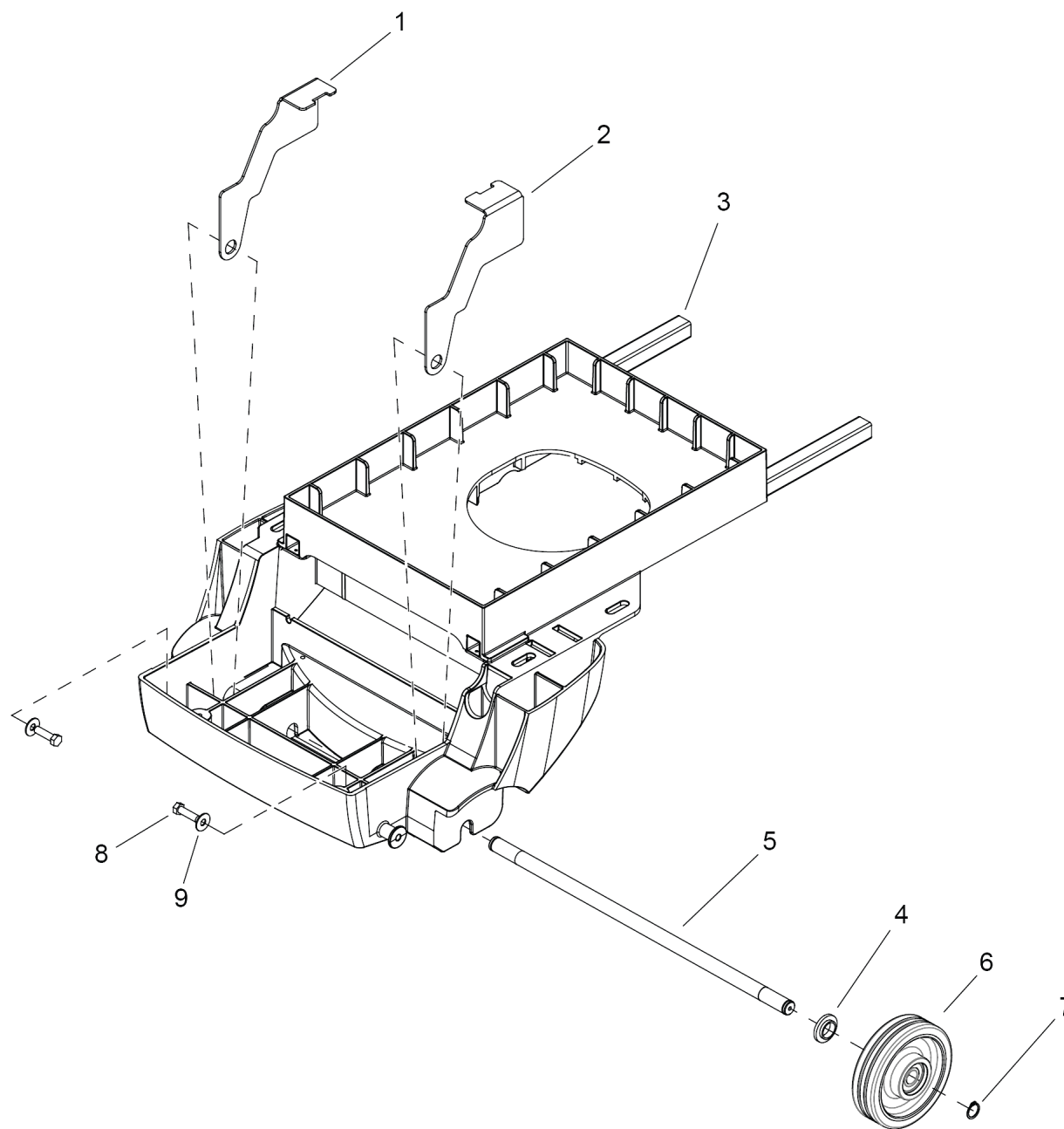
160 DRIVE LOWER

POS	Article no.	Description	Quantity	Unit
34	8.638-441.0	Cable spacer cross	1	PC
35	8.638-691.0	Brake traction motor C2	1	PC
36	8.642-686.0	Environmental brake cover	1	PC
37	8.626-493.0	CABLE TIE, 3.5" UL/CSA	1	PC
38	8.626-494.0	Cable tie 11.38" UL/CSA	1	PC



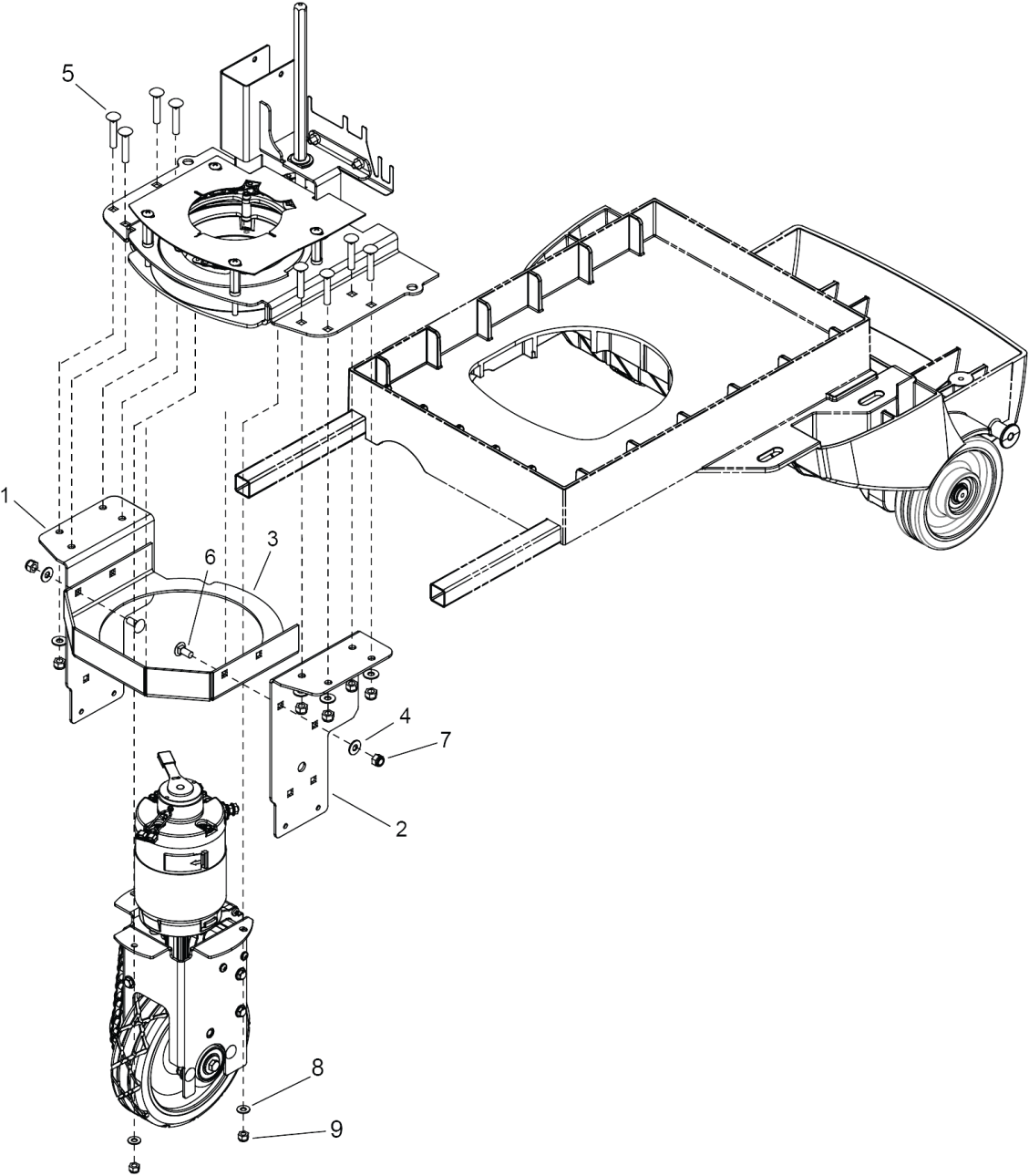
1 Traction motor C2 (8.641-117.0)

POS	Article no.	Description	Quantity	Unit
1	8.638-691.0	Brake traction motor C2	1	PC
2	8.638-411.0	Nut M6-1, HEX, SERFLG, DIN6923	2	PC
3	8.638-409.0	Carbon brush set AOMPI40	1	PC
4	8.642-686.0	Environmental brake cover	1	PC
5	8.626-493.0	CABLE TIE, 3.5" UL/CSA	1	PC
6	8.631-441.0	RELEASE BUTTON	1	PC
7	8.626-494.0	Cable tie 11.38" UL/CSA	1	PC



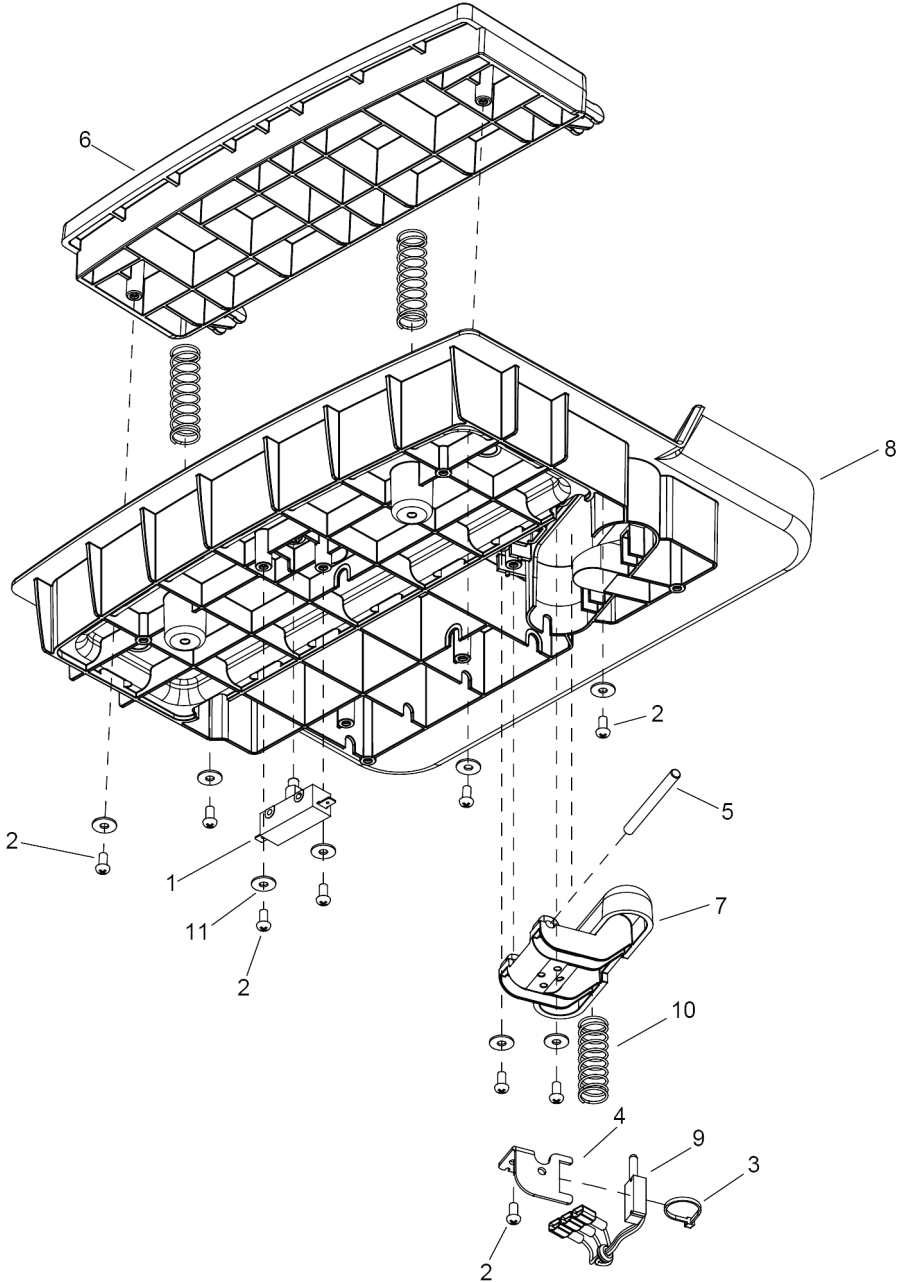
170 FRAME & REAR WHEELS

POS	Article no.	Description	Quantity	Unit
1	8.632-626.0	Holder frame left	1	PC
2	8.632-625.0	Holder frame right	1	PC
3	8.636-850.0	FRAME ASM, BLK	1	PC
4	8.632-622.0	SPACER, FLG, .887ID X 1.055OD X .345LG	2	PC
5	8.631-803.0	AXLE, 20MM X 562MM	1	PC
6	8.636-916.0	WHEEL, 6.00X1.58, GRY W/BEARINGS	2	PC
7	8.622-347.0	RING, 20MM EXTERNAL SNAP	2	PC
8	8.627-891.0	WASHER, 3/8 SS	2	PC
9	8.634-095.0	SCREW, 3/8 X 1.5 HHLS STL ZNPLT	2	PC



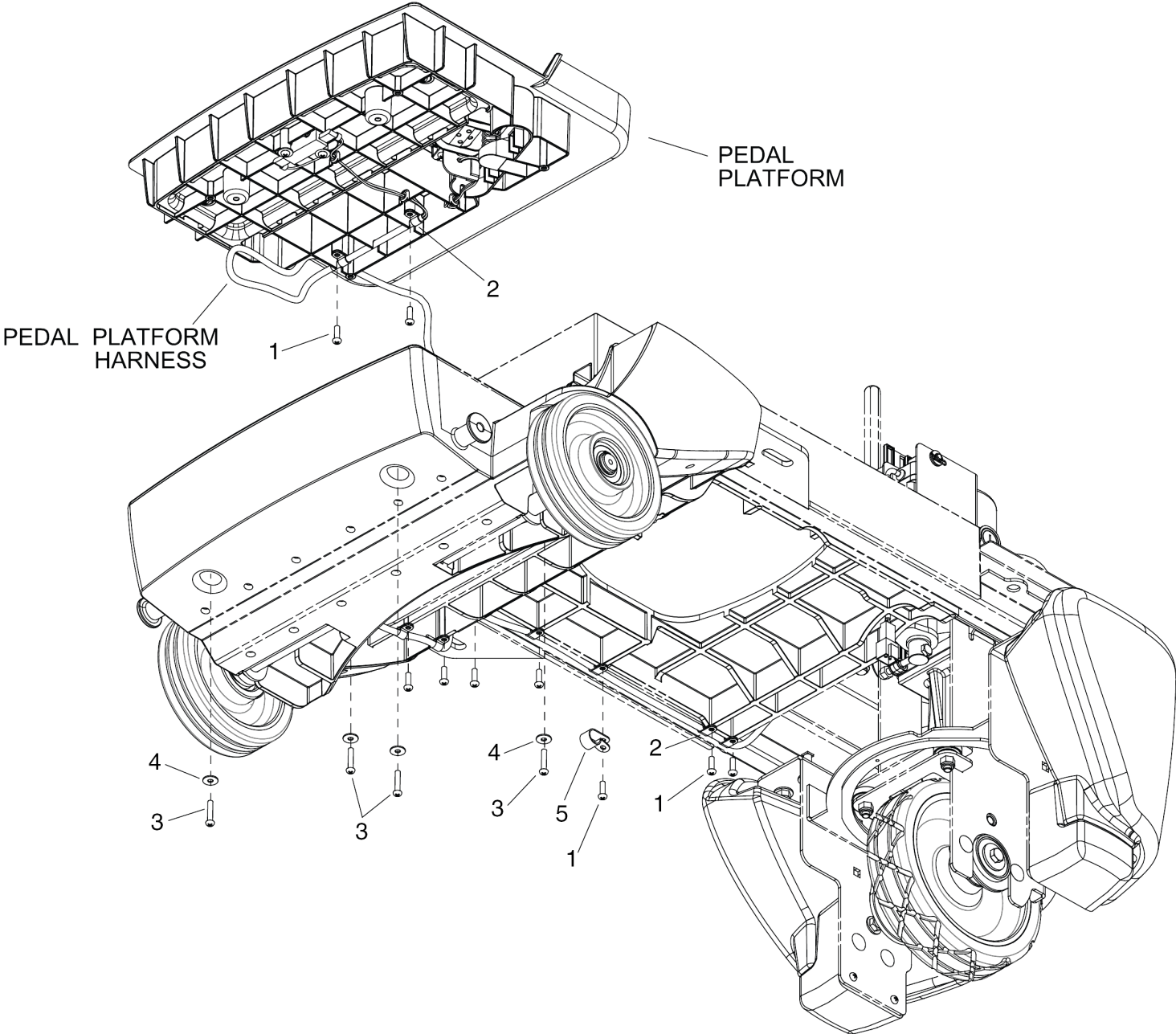
180 DRIVE MOUNTING

POS	Article no.	Description	Quantity	Unit
1	8.634-462.0	BRACKET, LINKAGE MOUNT	1	PC
2	8.631-973.0	Sheet metal component left	1	PC
3	8.640-541.0	BRACKET, C2 LOWER SUPPORT	1	PC
4	8.601-067.0	WASHER, 5/16 FLT SS	10	PC
5	8.627-669.0	SCREW, 5/16-18 X 1.75 CARR SS	8	PC
6	8.627-607.0	SCREW, 5/16-18 X .75 CARR SS	2	PC
7	8.627-083.0	NUT, 5/16-18 HEX NYLOCK SS	10	PC
8	8.601-063.0	WASHER, 1/4 SS	3	PC
9	8.627-187.0	NUT, 1/4-20 HEXTHIN NYLOCK SS	3	PC



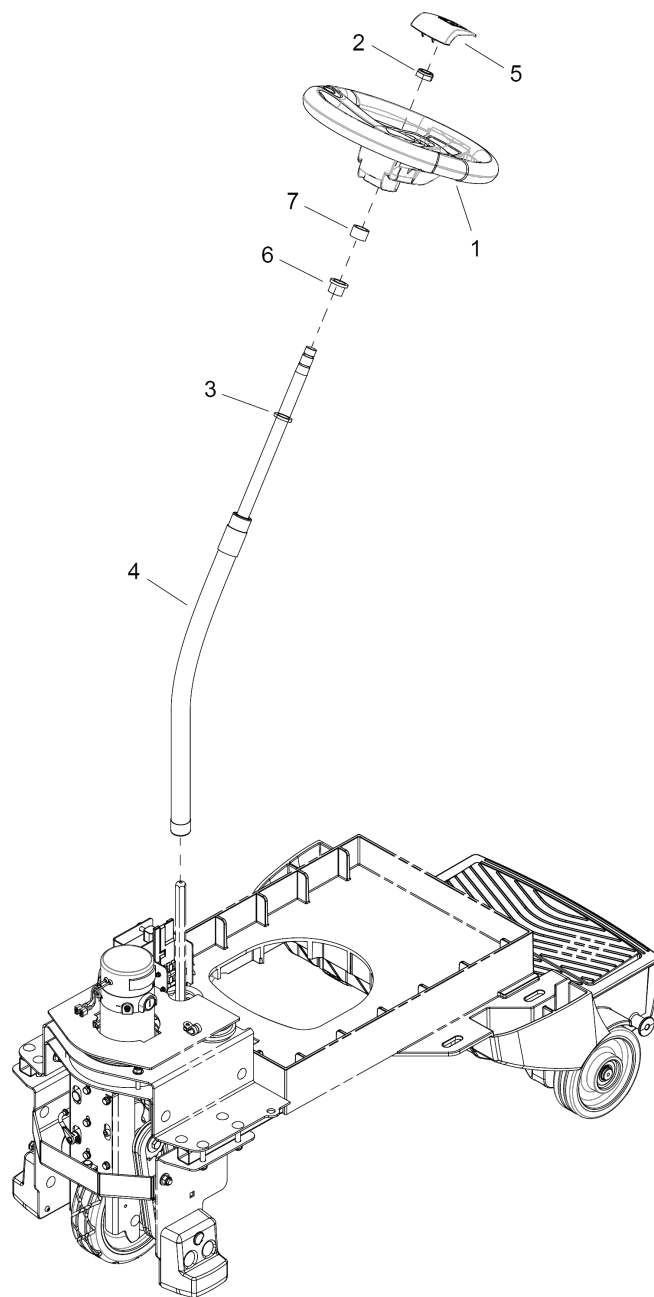
190 PEDAL PLATFORM

POS	Article no.	Description	Quantity	Unit
1	8.600-711.0	Switch 25A SPST 125-250V SNAP	1	PC
2	8.617-298.0	SCREW, KA50 X 10 OVHCS STL WN1412 ZNPLT	9	PC
3	8.626-493.0	CABLE TIE, 3.5" UL/CSA	1	PC
4	8.632-615.0	BRKT, LINEAR POT	1	PC
5	8.632-614.0	PIN, DOWEL 1/4 X 2.75 STL	1	PC
6	8.633-424.0	PEDAL, HEEL, BLK	1	PC
7	8.633-469.0	PEDAL, ACCELERATOR, YEL	1	PC
8	8.633-423.0	Moulded part black	1	PC
9	8.631-156.0	POTENTIOMETER ASM, LINEAR	1	PC
10	8.625-497.0	SPRING, COMP 18MMOD X 83 X 2	3	PC
11	8.617-333.0	WASHER, M5 SS ISO7093	8	PC



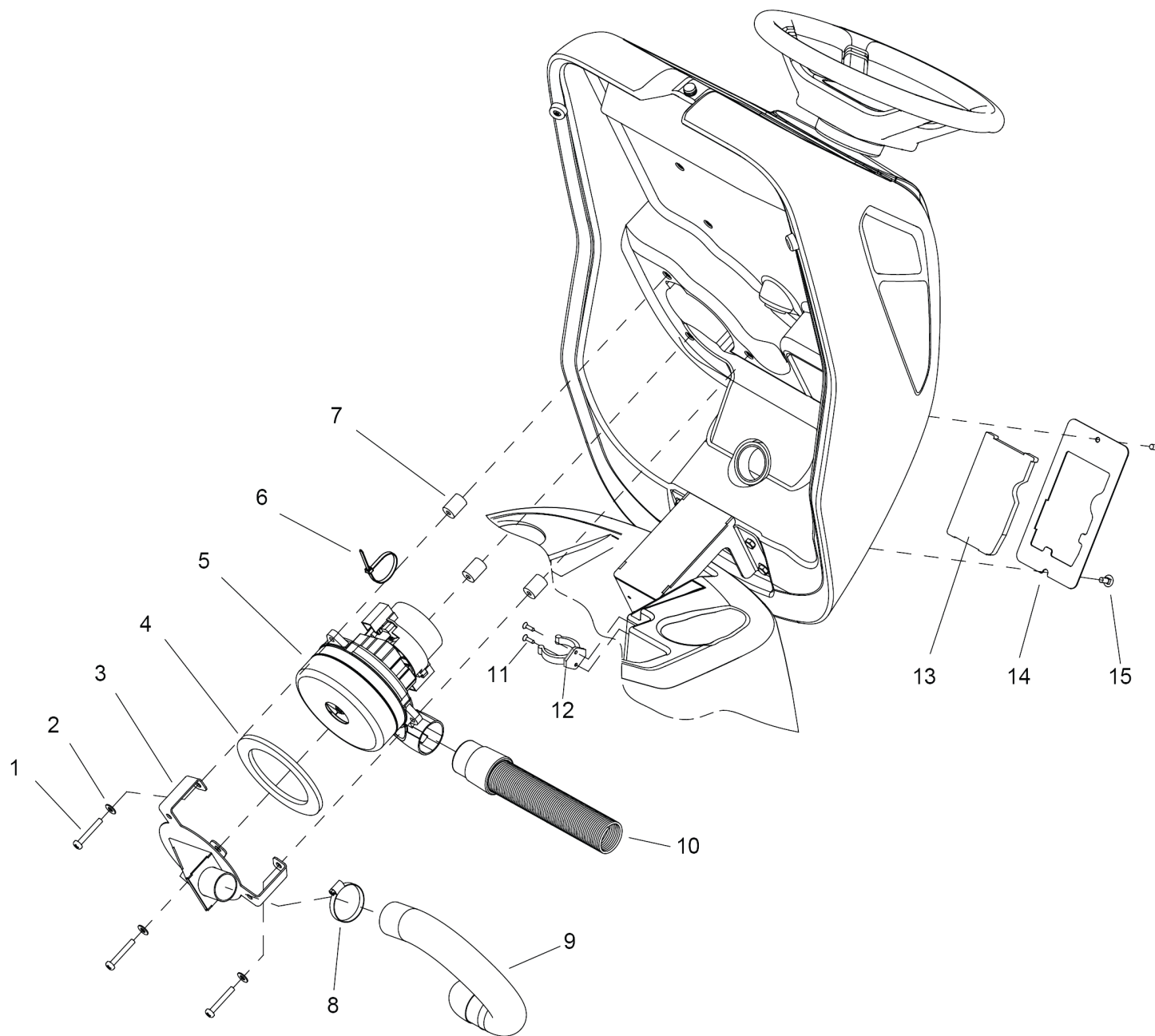
200 PEDAL PLATFORM MOUNTING

POS	Article no.	Description	Quantity	Unit
1	7.303-104.0	Screw 5x16 -A2-70 (IN6RD)	9	PC
2	8.619-844.0	CLAMP, 1/4 PLASTIC CABLE	9	PC
3	8.632-791.0	SCREW, KA50 X 25 PTOVHS STL WN1412 ZNPLT	4	PC
4	8.617-333.0	WASHER, M5 SS ISO7093	4	PC
5	8.619-847.0	Clamp 9/16 DIA NYLON	1	PC



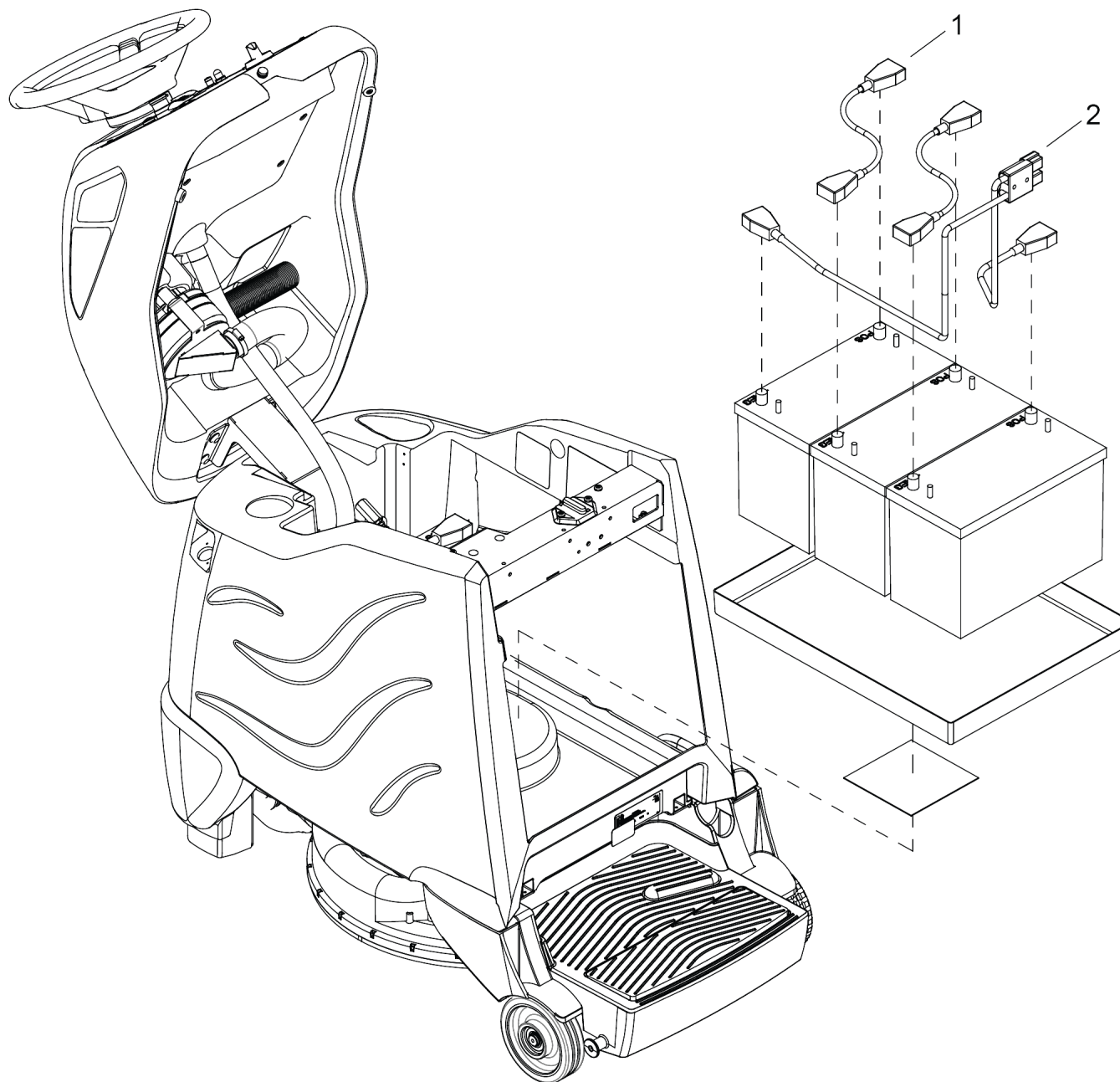
210 STEERING

POS	Article no.	Description	Quantity	Unit
1	6.435-799.0	Steering wheel	1	PC
2	8.627-161.0	NUT, 5/8-18 HEXTHIN NYLOCK STL GR2 ZNPLT	1	PC
3	8.627-942.0	WASHER, .765 X 1.25 X .08 FLT NYL	1	PC
4	8.635-569.0	Steering shaft	1	PC
5	6.640-353.0	Cap steering wheel KÄRCHER	1	PC
6	8.622-879.0	BUSHING, .753 X .875 X .75 FLG	2	PC
7	8.633-395.0	BUSHING, .751 D X 1 X .625 FLG	1	PC



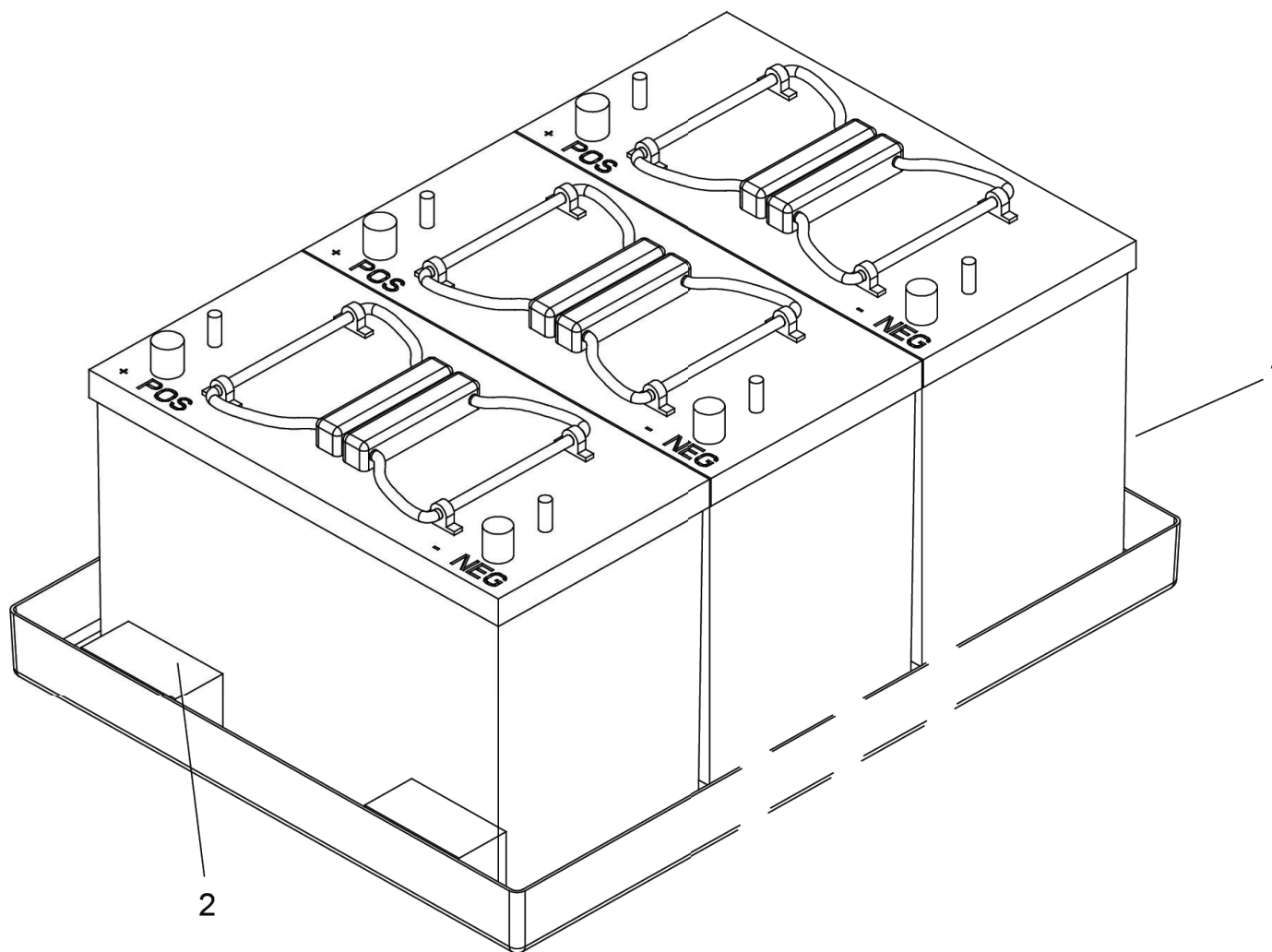
220 VACUUM

POS	Article no.	Description	Quantity	Unit
1	8.627-392.0	SCREW, 1/4-20 X 1.75 PHPNHMS SS	3	PC
2	8.601-063.0	WASHER, 1/4 SS	3	PC
3	8.635-329.0	BRACKET, MOUNTING, VAC MOTOR	1	PC
4	8.631-292.0	GASKET, VAC MOTOR	1	PC
5	6.490-197.3	Turbine 2-level 36V 650W (CCL)	1	PC
6	8.626-494.0	Cable tie 11.38" UL/CSA	1	PC
7	8.632-750.0	BUSHING, .250 X .75 X 1 MOUNT VIBRATION	3	PC
8	8.600-240.0	Clamp 2.0" WORM GEAR X .312W	1	PC
9	8.632-033.0	HOSE ASM, 1.5 BLK VAC X12	1	PC
10	8.635-615.0	HOSE, 1.5" X 7.75", 4:1 STRETCH	1	PC
11	8.629-122.0	SCREW, KA40 X 16 FLT SS WN1413	2	PC
12	8.635-591.0	CLIP, 1-3/4", PLASTIC	1	PC
13	8.614-333.0	MOTOR FILTER U19836	1	PC
14	8.635-465.0	FRAME, FILTER	1	PC
15	8.627-764.0	SCREW, 1/4-20 X .75 PHTRHMS SS	2	PC



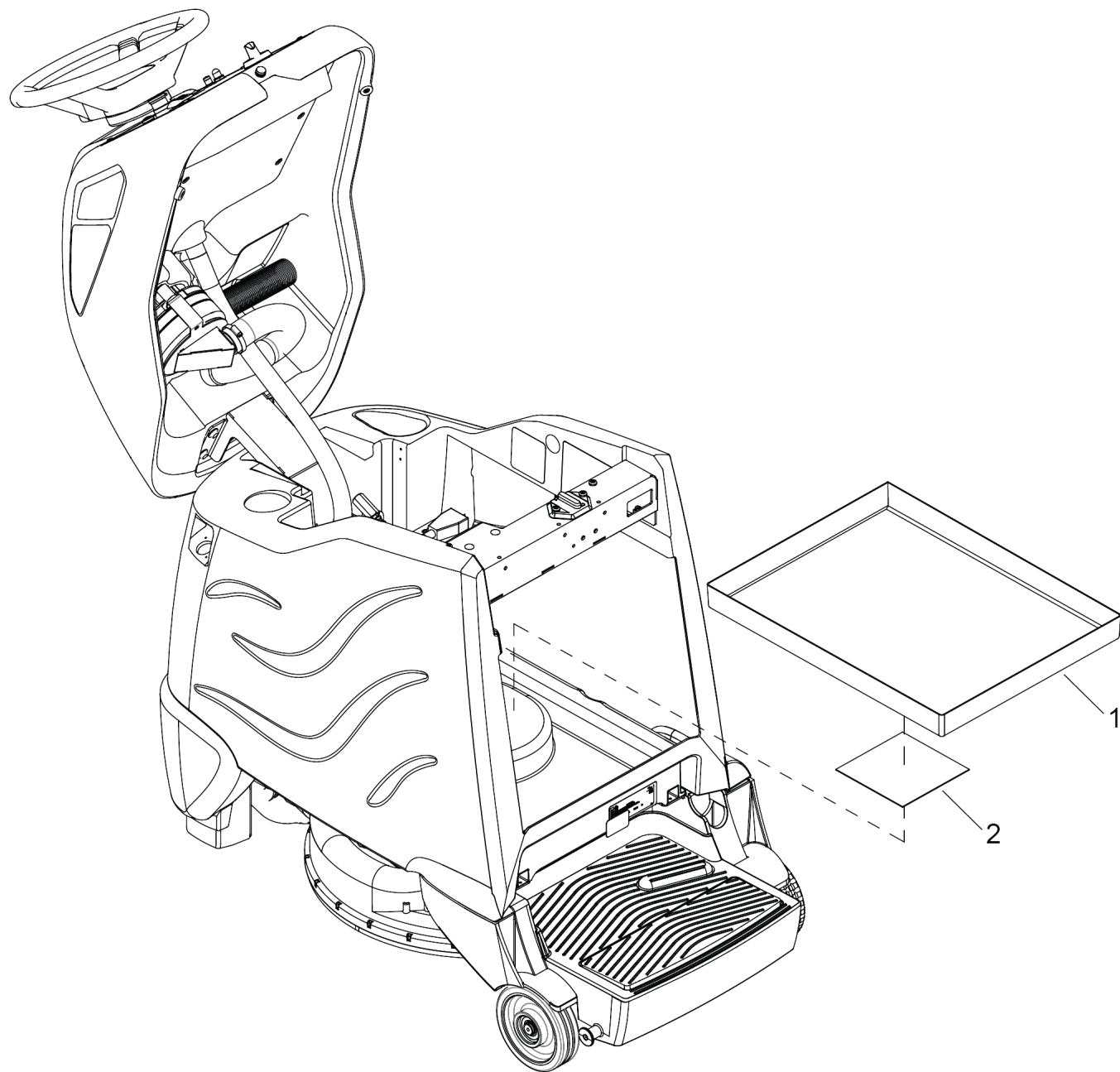
230 BATTERY CABLE ASM, IGLOSS 20

POS	Article no.	Description	Quantity	Unit
1	8.635-612.0	CABLE, ASM, BATTERY	1	PC
2	8.632-972.0	Cable battery	2	PC



240 BATTERY

POS	Article no.	Description	Quantity	Unit	Remark
1	8.622-840.0	BATTERY, 12V 130AH (30XHS)	3	PC	1.008-092.0
1	8.622-843.0	BATTERY, 12V AGM 234AH	3	PC	1.008-096.0, 097.0, 100.0, 101.0
1	8.628-341.0	BATTERY, 12V, 225AH (J185H-AC)	3	PC	1.008-095.0, 099.0
1	8.632-863.0	BATTERY, 12V 114A/H AGM	3	PC	1.008-093.0, 094.0
2	8.622-970.0	BLOCK, 3.0 X 1.5 X 1.5	2	PC	1.008-093.0, 094.0



260 BATTERY TRAY, iGLOSS 20 (8.635-833.0)

POS	Article no.	Description	Quantity	Unit
1	8.639-531.0	Tub battery	1	PC
2	8.635-955.0	TAPE, 1/16" T X 6.0" SQ. 2 SIDE ADH	1	PC



260 BATTERY TRAY SM, iGLOSS 20 (8.636-303.0)

POS	Article no.	Description	Quantity	Unit
1	8.639-815.0	TRAY, BATTERY IGLOSS 20	1	PC
2	8.635-955.0	TAPE, 1/16" T X 6.0" SQ. 2 SIDE ADH	1	PC