

Spare parts list
(5.962-400.0) Spare parts list BR/BD 55/65/75

The logo for Monster Janitorial, featuring a stylized 'M' and 'J' in red and blue, with the word 'MONSTER' in blue and 'JANITORIAL' in red below it.
CLICK TO ORDER PARTS

DE HINWEISE

Weitere Sprachen:

Diese Ersatzteilliste ist in weiteren Sprachen erhältlich. Sie erhalten diese unter www.kaercher.com im Bereich Service.
Die Schreibweise der Teilenummer, z.B. 75456380, entspricht der Teilenummer 7.545-638.0.

Mengenangaben:

Die Mengenangaben in der Ersatzteilliste entsprechen den in der Baugruppe verbauten Stückzahlen der Bauteile.

Meterware:

Ersatzteile welche als Meterware geliefert werden sind auf Einbaulänge selbst zu kürzen. Die Stückzahlen sind als Mindestbestellmenge =1m angegeben und müssen je nach Bedarf auf weitere volle Meterzahlen erhöht werden.

Versionen/ Werknummern:

Sind Versionen oder Werknummern in der Ersatzteilliste angegeben, ist anhand dieser vor Bestellung zu prüfen, welches Bauteil für ihr Gerät verwendet werden muss.

Lackierte Teile:

Bei Bestellungen von lackierten Teilen welche in der Ersatzteilliste nicht in verschiedenen Farben ausgewiesen sind, ist zusätzlich die Farbnummer oder Farbe mit anzugeben.

Technische Änderungen:

Technische Änderungen sowie das Recht der ausschließlichen Auswertung unseres geistigen Eigentums behalten wir uns vor.

EN INSTRUCTIONS

Other languages:

This list of spare parts is also available in other languages. You can get this list from www.kaercher.com in the Service division.
The designation of the part number e.g. 75456380 is equal to 7.545-638.0.

Quantity details:

The quantity details in the spare parts list correspond to the number of pieces of the component installed in the assembly group.

Piece goods:

Spare parts that are sold as piece goods are to be cut to the desired length. The quantities have been indicated as minimum order quantity =1m and must be rounded off to the full meter figure depending on your requirements.

Version/ Plant numbers:

If version or plant numbers are mentioned in the spare parts list, then use the same to check before ordering which spare part needs to be used for your appliance.

Painted parts:

While ordering painted parts that are not mentioned in the spare parts list in their colour variations, please mention the colour number or the colour you require.

Technical changes:

We reserve the right to make technical changes as well as the right to exclusive use of our intellectual property.

FR REMARQUES

Autres langues:

Cette liste de pièces de rechange est disponible en autres langues. Cela est disponible sous www.kaercher.com dans le menu Service.
La désignation du numéro de pièce, par ex. 75456380, correspond au numéro de pièce 7.545-638.0.

Indications de quantité:

Les indications de quantité dans la liste de pièces de rechange correspondre aux nombres de pièces des composant utilisées dans la construction.

Matériel au mètre:

Les pièces de rechange qui sont livrées au mètre doivent être raccourcies à longueur souhaitée par l'acheteur même. Les nombres des pièces sont indiquées en quantité de commande minimale = 1m et doivent être augmentés selon le besoin à une chiffre de mètre complète.

Versions/ Numéros d'usine:

Lorsqu'il sont indiquées des versions ou des numéros d'usine dans la liste de pièces de rechange, vous devez vérifier que composant doit être utilisé pour votre appareil.

Pièces laquées:

Pour commander des pièces laquées, où les différentes couleurs ne sont pas indiquées dans la liste des pièces de rechange, vous devez indiquer en plus le numéro de la couleur ou seulement la couleur.

Modifications techniques:

Nous nous réservons la possibilité des modifications techniques ainsi le droit d'exploitation exclusive de notre propriété intellectuelle.

IT AVVERTENZE

Altre lingue:

Il presente elenco di parti di ricambio è disponibile sul nostro sito Web anche in altre lingue: sotto www.kaercher.com alla voce "Service".

L'indicazione del codice pezzo, ad es. 75456380, corrisponde al codice pezzo 7.545-638.0

Indicazioni di quantità:

Le indicazioni di quantità riportate dall'elenco "parti di ricambio" corrispondono al numero delle singole componenti contenute nella rispettiva unità.

Merce a metro:

Le parti di ricambio fornite come "merce a metro" devono venire in seguito accorciate alla lunghezza necessaria per il montaggio. La quantità unitaria è indicata come "quantità minima di ordinazione = 1m" e deve all'occorrenza venire moltiplicata per il numero intero di metri necessari.

Versioni / Numeri di fabbricazione:

Quando l'elenco "parti di ricambio" riporta diverse versioni o numeri di fabbricazione, confrontare la versione o il numero di fabbricazione del ricambio desiderato con quelle/i presenti nell'elenco e indicarla/o al momento dell'ordinazione.

Parti di ricambio verniciate:

Nel caso di ricambi verniciati, se l'elenco parti di ricambio non ne riporta espressamente i diversi colori, al momento dell'ordinazione è necessario indicare anche il colore o il numero del colore desiderato.

Modifiche tecniche:

Ci riserviamo il diritto di apportare modifiche tecniche così come il diritto di utilizzo esclusivo della nostra proprietà intellettuale.

ES INDICACIONES

Otros idiomas:

La lista de piezas de repuesto se puede adquirir en otros idiomas. La puede adquirir en www.kaercher.com en el área de servicios.

La notación de los números de las piezas, p.ej. 75456380 corresponde al número de pieza 7.545-638.0.

Cantidades:

Las indicaciones de cantidades de la lista de piezas de repuesto corresponden al número de piezas montadas en el componente.

Mercancía por metros:

Las piezas de repuesto que se suministran por metros se pueden cortar al largo deseado. La unidad mínima de pedido es de = 1 m y el número de metros completos se puede aumentar según necesidad.

Versiones/números de fábrica:

Si se indica la versión o número de fábrica en la lista de piezas de repuesto, se debe comprobar en ella la pieza a usar para su aparato antes de realizar el pedido.

Piezas lacadas:

Al realizar pedidos de piezas lacadas que no estén indicadas en los diferentes colores en la lista de piezas de repuesto, se debe indicar también la referencia del color o el color.

Modificaciones técnicas:

Reservados los derechos de realizar modificaciones técnicas y aprovechar nuestra propiedad intelectual.

PL WSKAZÓWKI

Pozostałe języki:

Ta lista części zamiennych jest dostępna w także w innych językach. Mogą ją Państwo pobrać ze strony www.kaercher.com w dziale Serwis.

Sposób zapisywania numeru części, np. 75456380, odpowiada numerowi części 7.545-638.0.

Dane ilości:

Dane ilości podane w liście części zamiennych odpowiadają liczbie sztuk podzespołów tworzących dany moduł.

Towar sprzedawany na metry:

Części zamienne dostarczane jako towar sprzedawany na metry po zamontowaniu należy samodzielnie skrócić do potrzebnej długości. Liczba sztuk podana jest jako minimalna ilość zamówienia = 1m i w zależności od potrzeb zwiększa się ją o kolejne pełne metry.

Wersje/ Numer zakładu:

Jeżeli w liście części zamiennych podane są wersje lub numery zakładu, przed zamówieniem na ich podstawie należy sprawdzić, który podzespół stosuje się w Państwa urządzeniu.

Części lakierowane:

W przypadku zamówień części lakierowanych, które w liście części zamiennych nie podano w wielu kolorach, należy dodatkowo zaznaczyć nr koloru lub kolor.

Zmiany techniczne:

Zastrzegamy sobie prawo do zmian technicznych oraz wyłącznego wykorzystywania naszej własności intelektualnej.

RU УКАЗАНИЯ:

Другие языки:

Данный список запасных частей также доступен на других языках. Вы найдете его на сайте www.kaercher.com в разделе Service
Маркировка номера детали, например, 75456380, соответствует номеру детали 7.545-638.0.

Указание количества:

Количественные данные в списке запасных частей соответствуют числу компонентов, входящих в состав узлов.

Товар, продаваемый на метры:

Запасные части, продающиеся на метры, необходимо обрезать до нужной длины. Число изделий указано в виде минимального объема заказа = 1м и их количество можно округлить до требуемого по мере необходимости.

Варианты исполнения/заводские номера:

Если варианты исполнения или заводские номера указаны в списке запасных частей, то перед заказом необходимо проверить, какая деталь подходит для вашего устройства.

Лакированные детали:

При заказе лакированных деталей, варианты расцветки которых не указаны в списке запасных частей, необходимо дополнительно указать номер цвета или необходимый для вас цвет.

Технические изменения:

Мы оставляем за собой право на технические изменения, а также право на исключительное использование нашей интеллектуальной собственности.

Table of contents

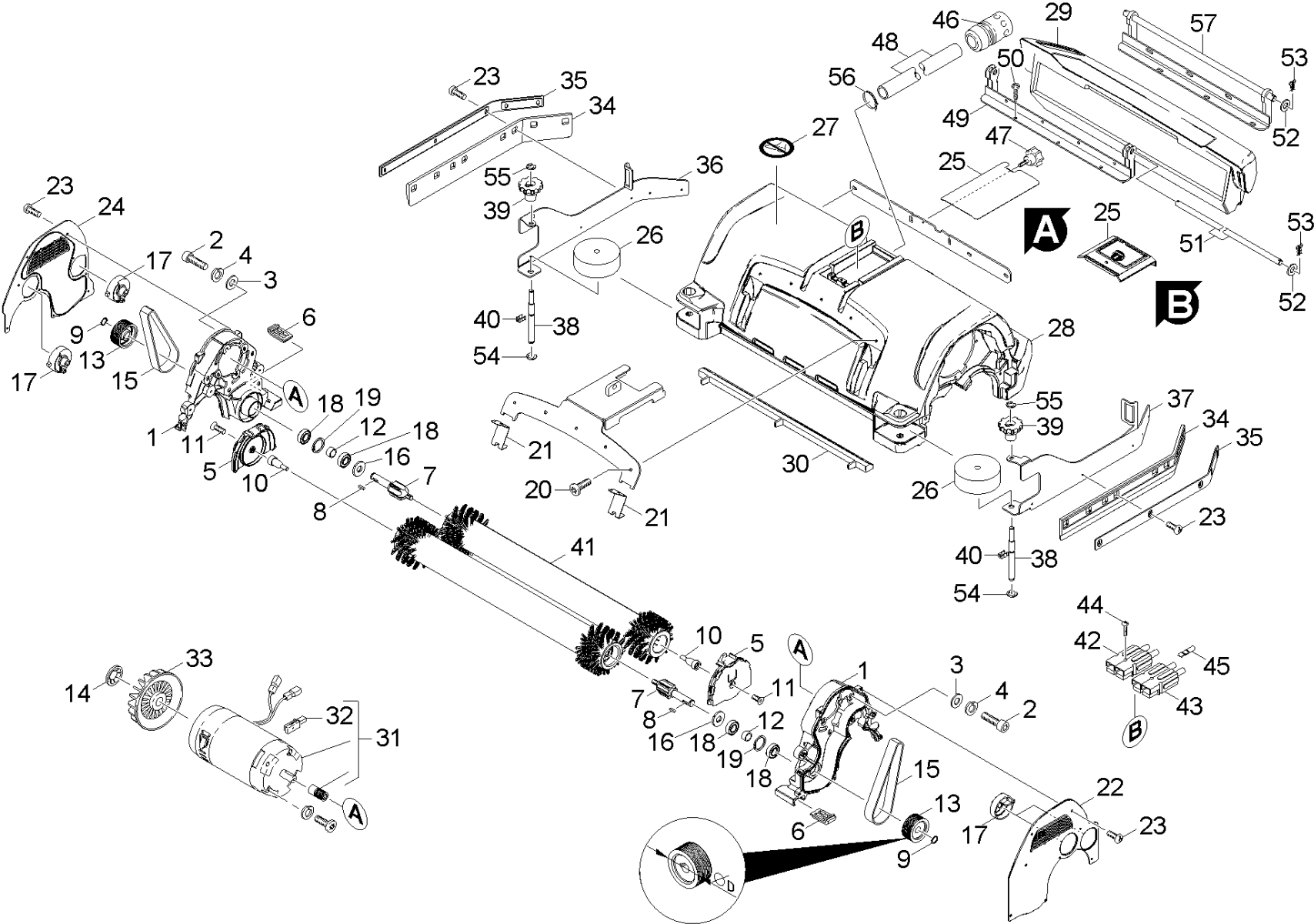
Spare parts list BR/BD 55/65/75 (5.962-400.0)	6
10 Power brush BR (0.147-615.0)	7
11 Power brush BR (0.147-428.0)	8
12 Roll pad BR (0.148-324.0)	14
20 Power brush BD (0.147-443.0)	16

Spare parts list BR/BD 55/65/75 (5.962-400.0)

Pos	Material #	Name
10	0.147-615.0	Power brush BR
20	0.147-443.0	Power brush BD

10 Power brush BR (0.147-615.0)

Pos	Material #	Name	Qty.	Unit
11	0.147-428.0	Power brush BR	1.000	ST
12	0.148-324.0	Roll pad BR	1.000	ST



11 Power brush BR (0.147-428.0)

ET/VT (spare/wear parts)	Pos	Material #	Name	Qty.	Unit	var. information	Footnote text
X-X	1	5.044-866.0	Retainer plate transmission	2.000	ST		
X-X	2	7.306-031.0	Screw M 6x16-A2-70 DIN 7984	10.000	ST		
X-X	3	7.312-026.0	Washer 6 -A2 ISO 7090	10.000	ST		
	4	7.313-003.0	Spring washer B 6-FSt-A3E DIN 127	10.000	ST		
X-X	5	5.044-858.0	Holder-up	2.000	ST		
X-X	6	5.056-010.0	Rocker BR-VS	2.000	ST		
X-X	7	5.100-553.0	Driveshaft BR 65 / 90	2.000	ST		VERSION 1
X-X	7	5.100-611.0	Driveshaft BR	2.000	ST		VERSION 2
X-X	8	7.318-002.0	Parallel key 5x5x16 -C45R DIN 6885-1	2.000	ST		
X-X	9	7.343-015.0	Locking ring 15x1-FST-RF DIN 471	2.000	ST		
X-X	10	5.116-340.0	Bolt holder-up	2.000	ST		
X-X	11	7.305-637.0	Countersunk screw M8x16-A2-70 ISO 10642	2.000	ST		
X-X	12	5.116-413.0	Sleeve	2.000	ST		VERSION 2
X-X	12	5.116-354.0	Bush transmission BR	2.000	ST		VERSION 1
X-X	13	5.625-483.0	Belt pulley 57mm	2.000	ST	D = 57mm	VERSION 1
X-X	13	5.625-494.0	Belt pulley 54mm	2.000	ST	D = 54mm	VERSION 2
X-X	14	6.343-149.0	Quick-fastener	2.000	ST		
X-X	15	6.348-456.0	Ribbed v-belt	2.000	ST		VERSION 2
X-X	15	6.348-442.0	Ribbed v-belt	2.000	ST		VERSION 1
X-X	16	6.363-158.0	Joint ring Nilosring	2.000	ST		
X-X	17	5.033-206.0	Locking part	4.000	ST		YELLOW
X	17	5.033-665.0	Locking part	4.000	ST		GREY
X-X	18	7.401-115.0	Ball bearing 6002-2RS -WÄLZLAGST DIN 62	4.000	ST		VERSION 1
	18	7.401-128.0	Ball bearing 6202-2RS -Wälzl.St DIN 625	4.000	ST		VERSION 2
X-X	19	7.343-017.0	Locking ring 35x1,5-FST-PHR DIN 472	2.000	ST		VERSION 2

11 Power brush BR (0.147-428.0)

ET/VT (spare/wear parts)	Pos	Material #	Name	Qty.	Unit	var. information	Footnote text
X-X	19	7.343-231.0	Locking ring 32x1,2 -St-ph DIN 472	2.000	ST		VERSION 1
	20	7.303-047.0	Screw M6x16 -St-R3R (In6Rd)	5.000	ST		
	21	5.033-664.0	Locking part tension rod	2.000	ST		GREY
X-X	21	5.033-394.0	Locking part	2.000	ST		YELLOW
X-X	22	5.033-241.0	Covering cap left	1.000	ST		
X-X	23	7.303-037.0	Screw M5x10 -St-P2R (In6Rd)	28.000	ST		
X	24	5.033-242.0	Covering cap right	1.000	ST		
X	25	5.033-403.0	Cover BR	1.000	ST	VERSION B	
	25	5.009-380.0	Cover plate	1.000	ST	VERSION A	
X-X	26	5.515-267.0	Deflector roll suction bar	2.000	ST		
	27	5.383-097.0	Label	1.000	ST		
X	28	5.061-577.0	Brush housing BR 75	1.000	ST		
	28	5.061-580.0	Brush housing BR 65	1.000	ST		
	28	5.061-576.0	Brush housing BR 55	1.000	ST		
X	28	5.061-983.0	Brush housing R 90	1.000	ST		
	29	5.070-753.0	Tank refuse 65	1.000	ST		
	29	5.070-804.0	Tank refuse R 90	1.000	ST		
	29	5.070-756.0	Tank refuse BR 75	1.000	ST		
	29	5.070-755.0	Tank refuse BR 55	1.000	ST		
	30	5.190-261.0	Strip water distributor	1.000	ST	R 65	GREY
X	30	5.190-291.0	Strip water distributor R 90	1.000	ST	R 90	GREY
	30	5.190-261.0	Strip water distributor	1.000	ST	R 65	YELLOW
	30	5.190-288.0	Strip water distributor BR 55	1.000	ST	R 55	YELLOW
	30	5.190-288.0	Strip water distributor BR 55	1.000	ST	R 55	GREY
	30	5.190-289.0	Strip water distributor BR 75	1.000	ST	R 75	YELLOW

11 Power brush BR (0.147-428.0)

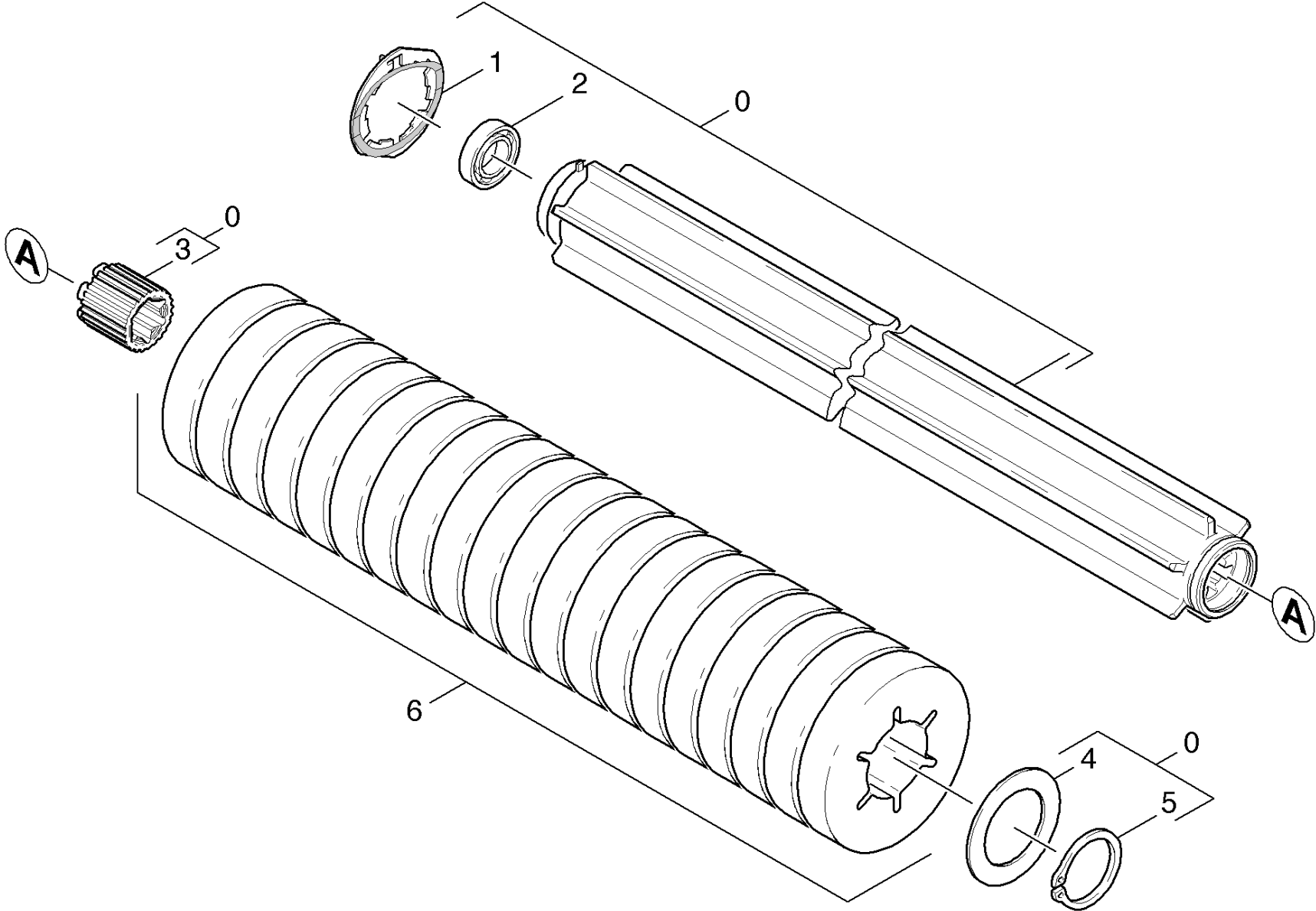
ET/VT (spare/wear parts)	Pos	Material #	Name	Qty.	Unit	var. information	Footnote text
X	30	5.190-291.0	Strip water distributor R 90	1.000	ST	R 90	YELLOW
X	31	4.623-927.0	Motor complete only for replacement	2.000	ST	24V//750W - B 140 R	VERSION 2
X	31	4.623-920.0	Motor complete nur fuer Ersatz	2.000	ST	24V//600W	VERSION 1
X	31	4.623-993.0	Motor complete	2.000	ST	24V//600W	VERSION 2
X	32	6.610-216.0	Carbon brush set	1.000	ZSA	(AMER)	
X-X	32	6.610-239.0	Carbon brush set ATAS	1.000	ST	(ATAS)	
X-X	33	6.613-025.0	Blower wheel	2.000	ST		
X-X	34	5.394-823.0	Splash guard	2.000	ST		
X-X	35	5.044-867.0	Retainer strip splash guard	2.000	ST		
X-X	36	5.009-401.0	Bracket right scraper lip	1.000	ST		
X-X	37	5.009-402.0	Bracket left scraper lip	1.000	ST		
X-X	38	5.116-339.0	Threaded bolt	2.000	ST		
X-X	39	5.033-240.0	Hand wheel	2.000	ST		
X-X	40	6.330-407.0	Spring clip	2.000	ST		
X-X	41	6.906-989.0	Roller brush white - BR 90	2.000	ST		
X-X	41	6.906-988.0	Roller brush black - BR 75	2.000	ST		
X-X	41	6.906-986.0	Roller brush orange - BR 75	2.000	ST		
X-X	41	6.906-990.0	Roller brush orange - BR 90	2.000	ST		
X-X	41	6.906-987.0	Roller brush green - BR 75	2.000	ST		
X-X	41	4.114-007.0	Microfibre roll complete BR 75	2.000	ST		
X-X	41	4.114-005.0	Microfibre roll complete BR 55	2.000	ST		
X-X	41	6.906-985.0	Roller brush white - BR 75	2.000	ST		
X-X	41	6.906-992.0	Roller brush black - BR 90	2.000	ST		
X-X	41	6.906-991.0	Roller brush green - BR 90	2.000	ST		
X-X	41	6.906-984.0	Roller brush black - BR 65	2.000	ST		

11 Power brush BR (0.147-428.0)

ET/VT (spare/wear parts)	Pos	Material #	Name	Qty.	Unit	var. information	Footnote text
X-X	41	6.906-936.0	Roller brush red - BR 75	2.000	ST		
	41	6.906-937.0	Roller brush red - BR 90	2.000	ST		
X-X	41	6.906-935.0	Roller brush red - BR 65	2.000	ST		
X-X	41	6.906-934.0	Roller brush red - BR 55	2.000	ST		
X-X	41	4.114-008.0	Microfibre roll complete BR 90	2.000	ST		
X-X	41	6.906-977.0	Roller brush white - BR 55	2.000	ST		
X-X	41	6.906-978.0	Roller brush orange - BR 55	2.000	ST		
X-X	41	6.906-982.0	Roller brush orange - BR 65	2.000	ST		
X-X	41	6.906-983.0	Roller brush green - BR 65	2.000	ST		
X-X	41	6.906-981.0	Roller brush white - BR 65	2.000	ST		
X-X	41	6.906-980.0	Roller brush black - BR 55	2.000	ST		
X-X	41	6.906-979.0	Roller brush green - BR 55	2.000	ST		
X-X	41	4.114-006.0	Microfibre roll complete BR 65	2.000	ST		
X-X	42	6.646-329.0	Plug red 75A	2.000	ST		
X-X	43	6.646-330.0	Plug blue 75A	2.000	ST		
X-X	44	7.303-107.0	Screw 5x16 -10.9-P2R (K-In6Rd)	3.000	ST		
X-X	45	6.646-979.0	Switch contact	4.000	ST		
	46	6.388-482.0	Hose coupling	1.000	ST		
	47	6.321-196.0	Star grip M5x10	1.000	ST		
X-X	48	6.390-892.0	Spiral hose NW12	1.000	M		TO ORDER AS CUT GOODS
X-X	49	4.481-258.0	Holder pivot point head R 55 / R 65	1.000	ST	L = 406mm	
	49	4.481-239.0	Holder brush-head	1.000	ST	L = 446mm	
X-X	50	7.303-112.0	Screw 6x20 -10.9-R2R (In6Rd)	6.000	ST		
X-X	51	5.107-290.0	Bar brush-head	1.000	ST		
	52	7.312-008.0	Washer 12-200HV-A3E ISO 7090	2.000	ST		

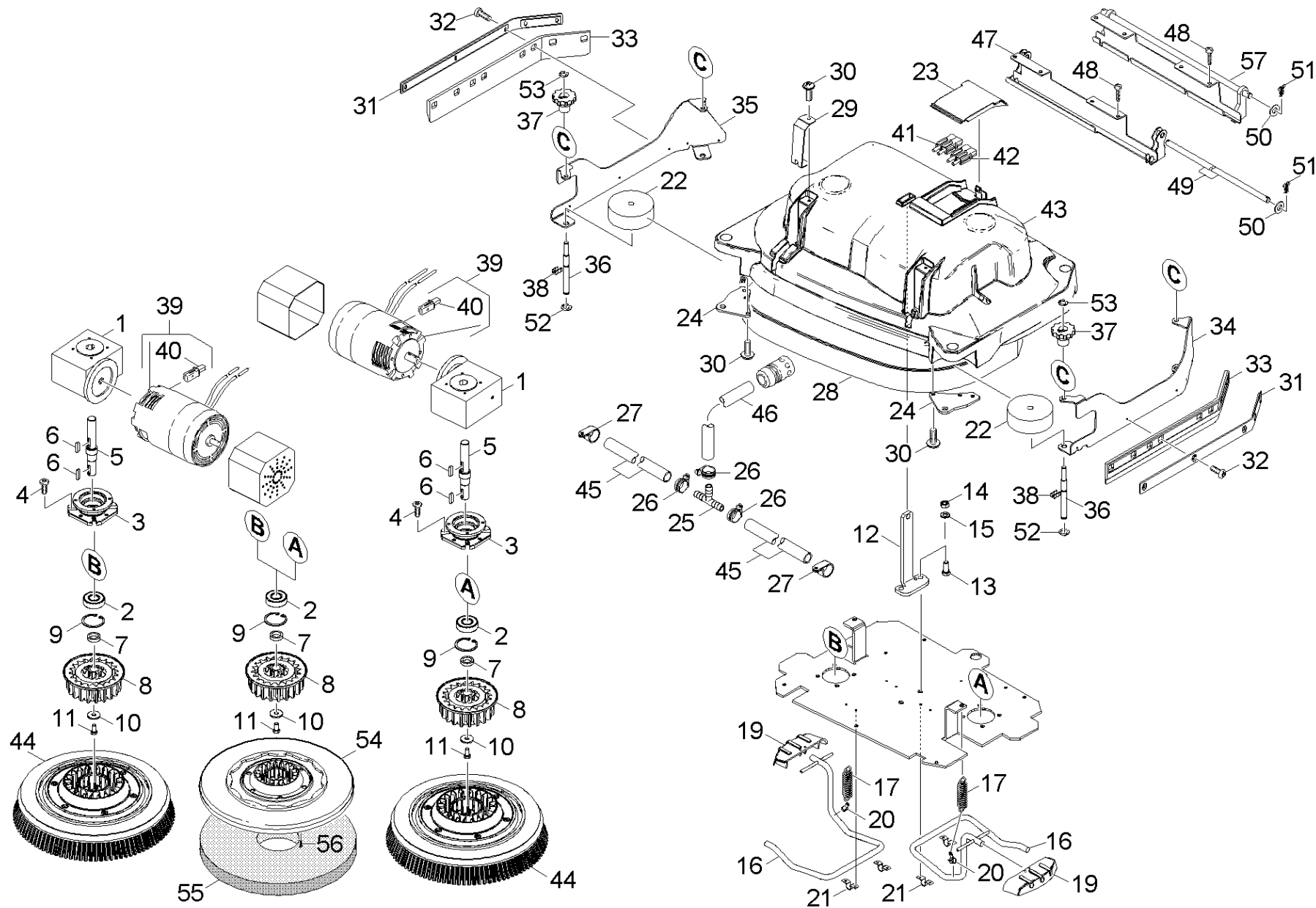
11 Power brush BR (0.147-428.0)

ET/VT (spare/wear parts)	Pos	Material #	Name	Qty.	Unit	var. information	Footnote text
X-X	53	6.313-022.0	Spring clip	2.000	ST		
X-X	54	7.343-047.0	Lock washer 10-FST-A2E DIN 6799	2.000	ST		
X-X	55	7.343-302.0	Lock washer 8 -St-ph DIN 6799	2.000	ST		
X-X	56	6.388-545.0	Hose clip	1.000	ST		
	57	4.481-261.0	Holder pivot point complete BR	1.000	ST	L = 406mm	



12 Roll pad BR (0.148-324.0)

ET/VT (spare/wear parts)	Pos	Material #	Name	Qty.	Unit
X-X	0	4.762-436.0	Roll pad BR 100	2.000	ST
X-X	0	4.762-435.0	Roll pad BR 90	2.000	ST
X-X	0	4.762-434.0	Roll pad BR 75	2.000	ST
X-X	0	4.762-432.0	Roll pad BR 55	2.000	ST
X-X	0	4.762-433.0	Roll pad BR 65	2.000	ST
	1	4.115-004.0	Washer closure	1.000	ST
X-X	2	7.401-005.0	Ball bearing 6302-2RS- DIN 6	1.000	ST
	3	5.112-823.0	Bush Torx	2.000	ST
	4	5.005-267.0	Ronde	1.000	ST
X-X	5	7.343-037.0	Locking ring 50x2-FST-RF DIN 471	1.000	ST
X-X	6	6.369-456.0	Pad red 105-20ST	2.000	ZSA
X-X	6	6.369-455.0	Pad green 105-20ST	2.000	ZSA
X-X	6	6.369-389.0	Pad white 105-20ST	2.000	ZSA
X-X	6	6.369-454.0	Pad yellow 105-20ST	2.000	ZSA



20 Power brush BD (0.147-443.0)

ET/VT (spare/wear parts)	Pos	Material #	Name	Qty.	Unit	var. information	Footnote text
X-X	1	6.454-198.0	Worm gearing i=20	2.000	ST		
X-X	2	7.401-173.0	Ball bearing 6204-2RS-WAELZLAGST DIN 625	2.000	ST		
X-X	3	5.122-470.0	Flange worked	2.000	ST		
X	4	7.303-067.0	Screw M8x16-ST-A3R (IN6RD)	8.000	ST		
	5	5.100-566.0	Shaft	2.000	ST		
X-X	6	7.318-030.0	Parallel key 6x6x25 -C45R DIN 6885-1	4.000	ST		
X-X	7	5.116-359.0	Sleeve	2.000	ST		
X-X	8	5.122-462.0	Retainer transmission die casting	2.000	ST		
X-X	9	7.343-115.0	Locking ring 47x1,75 -St-ph DIN 472	2.000	ST		
X-X	10	7.312-268.0	Washer 8 -A2 ISO 7094	2.000	ST		
X-X	11	7.304-538.0	Hexagonal head screw M8x16-A4-70 ISO 40	2.000	ST		
	12	5.009-666.0	Plate Aufhaengung	1.000	ST		
X-X	13	7.304-801.0	Hexagonal head screw M10x25-A4-70 ISO 4	2.000	ST		
X-X	14	7.311-066.0	Hexagon nut M10-A2-70 ISO 4032	2.000	ST		
X-X	15	7.312-066.0	Washer 10 -A2 ISO 7090	2.000	ST		
	16	4.058-162.0	Lever complete BD 75	2.000	ST	BD 75	
	16	4.058-161.0	Lever complete BD 55+65	2.000	ST	BD 55+65+90	
X	17	6.330-093.0	Extension spring	2.000	ST		
	19	5.481-431.0	Pedal lever notch	2.000	ST		GREY
X-X	19	5.481-370.0	Pedal lever notch	2.000	ST		YELLOW
X-X	20	6.388-559.0	Hose clip	2.000	ST		
	21	6.373-689.0	Pipe clamp	4.000	ST		
X-X	22	5.515-326.0	Roller	2.000	ST		
X-X	23	5.033-400.0	Cover BD	1.000	ST		
X-X	24	5.009-662.0	Bracket deflector roll	2.000	ST		

20 Power brush BD (0.147-443.0)

ET/VT (spare/wear parts)	Pos	Material #	Name	Qty.	Unit	var. information	Footnote text
	25	6.388-408.0	T-Hose nozzle 1/2"	1.000	ST		
X-X	26	6.388-546.0	Hose clip	3.000	ST		
	27	6.641-460.0	Cable clamp	2.000	ST		
X-X	28	5.365-308.0	Sealing profile	1.000	ST	BD 65	
	28	5.365-309.0	Sealing profile	1.000	ST	BD 55	
	28	5.365-319.0	Sealing profile	1.000	ST	BD 90	
X-X	28	5.365-311.0	Sealing profile	1.000	ST	BD 75	
X-X	29	5.009-660.0	Bracket tension rod	2.000	ST		YELLOW
X-X	29	5.062-277.0	Bracket tension rod	2.000	ST		GREY
X-X	30	7.303-113.0	Screw 6x25 -10.9-A2R (In6Rd)	8.000	ST		
X-X	31	5.044-867.0	Retainer strip splash guard	2.000	ST		
X-X	32	7.303-037.0	Screw M5x10 -St-P2R (In6Rd)	10.000	ST		
X-X	33	5.394-823.0	Splash guard	2.000	ST		
X-X	34	5.009-668.0	Bracket left scraper lip	1.000	ST		
X-X	35	5.009-667.0	Bracket right scraper lip	1.000	ST		
X-X	36	5.116-339.0	Threaded bolt	4.000	ST		
X-X	37	5.033-666.0	Hand wheel	4.000	ST		GREY
X-X	37	5.033-240.0	Hand wheel	4.000	ST		YELLOW
X-X	38	6.330-407.0	Spring clip	4.000	ST		
X	39	4.623-920.0	Motor complete nur fuer Ersatz	2.000	ST		
X-X	40	6.610-239.0	Carbon brush set ATAS	1.000	ST	(ATAS)	
X	40	6.610-216.0	Carbon brush set	1.000	ZSA	(AMER)	
X-X	41	6.646-329.0	Plug red 75A	2.000	ST		
X-X	42	6.646-330.0	Plug blue 75A	2.000	ST		
X-X	43	5.064-269.0	Cover BD 750	1.000	ST		

20 Power brush BD (0.147-443.0)

ET/VT (spare/wear parts)	Pos	Material #	Name	Qty.	Unit	var. information	Footnote text
X-X	43	5.064-308.0	Cover D 90	1.000	ST		
	43	5.064-267.0	Cover BD 550	1.000	ST		
X-X	43	5.064-268.0	Cover BD 650	1.000	ST		
X-X	44	4.905-018.0	Disc brushes complete red BD75	2.000	ST		
X	44	4.905-019.0	Disc brushes complete white BD75	2.000	ST		
X-X	44	4.905-021.0	Disc brushes complete black BD75	2.000	ST		
X-X	44	4.905-017.0	Disc brushes complete black BD55	2.000	ST		
	44	4.905-020.0	Disc brushes complete nature BD75	2.000	ST		
X	44	4.905-012.0	Disc brushes complete nature BD65	2.000	ST		
X	44	4.905-016.0	Disc brushes complete nature BD55	2.000	ST		
X-X	44	4.905-006.0	Disc brushes complete black BD 45/40	2.000	ST		
X-X	44	4.905-005.0	Disc brushes complete white BD 45/40	2.000	ST		
X-X	44	4.905-003.0	Disc brush complete red 45	2.000	ST		
X-X	44	4.905-010.0	Disc brush complete red BD 65	2.000	ST		
X-X	44	4.905-011.0	Disc brushes complete white D65	2.000	ST		
X-X	44	4.905-015.0	Disc brushes complete white BD55	2.000	ST		
X-X	44	4.905-014.0	Disc brush complete red BD55	2.000	ST		
X-X	44	4.905-013.0	Disc brushes complete black BD65	2.000	ST		
X-X	44	4.905-004.0	Disc brushes complete nature BD 45/40	2.000	ST		
X-X	45	6.388-248.0	Hose DN12,5	1.000	M		TO ORDER AS CUT GOODS
X-X	46	6.390-892.0	Spiral hose NW12	1.000	M		TO ORDER AS CUT GOODS
	47	4.481-246.0	Holder pivot point head BD	1.000	ST	L = 446mm	
X-X	47	4.481-257.0	Holder pivot point head D 55 / D 65	1.000	ST	L = 406mm	
X-X	48	7.303-112.0	Screw 6x20 -10.9-R2R (In6Rd)	4.000	ST		
X-X	49	5.107-290.0	Bar brush-head	1.000	ST		

20 Power brush BD (0.147-443.0)

ET/VT (spare/wear parts)	Pos	Material #	Name	Qty.	Unit	var. information	Footnote text
	50	7.312-008.0	Washer 12-200HV-A3E ISO 7090	2.000	ST		
X-X	51	6.313-022.0	Spring clip	2.000	ST		
X-X	52	7.343-047.0	Lock washer 10-FST-A2E DIN 6799	4.000	ST		
X-X	53	7.343-302.0	Lock washer 8 -St-ph DIN 6799	4.000	ST		
X-X	54	4.762-445.0	Disk pad BD55	2.000	ST		
X-X	54	4.762-493.0	Disk pad D 90	2.000	ST		
X-X	54	4.762-446.0	Disk pad BD 65	2.000	ST		
X-X	54	4.762-447.0	Disk pad BD 75	2.000	ST		
X	55	6.371-250.0	Diamond pad white set 5x Ø356	2.000	ST		WHITE
	55	6.371-249.0	Diamond pad yellow set 5x Ø306	2.000	ST		YELLOW
	55	6.371-247.0	Diamond pad yellow set 5x Ø280	2.000	ST		YELLOW
X	55	6.371-251.0	Diamond pad yellow set 5x Ø356	2.000	ST		YELLOW
	55	6.371-248.0	Diamond pad white set 5x Ø306	2.000	ST		WHITE
	55	6.371-253.0	Diamond pad yellow set 5x Ø385	2.000	ST		YELLOW
X	55	6.371-259.0	Diamond pad yellow set 5x Ø457	2.000	ST		YELLOW
	55	6.371-246.0	Diamond pad white set 5x Ø280	2.000	ST		WHITE
	55	6.371-258.0	Diamond pad white set 5x Ø457	2.000	ST		WHITE
	55	6.371-252.0	Diamond pad white set 5x Ø385	2.000	ST		WHITE
X	55	6.371-186.0	Diamond pad violet set 5x Ø355	2.000	ST		VIOLET
X	55	6.371-185.0	Diamond pad brown set 5x Ø355	2.000	ST		BROWN
X	55	6.371-187.0	Diamond pad brown set 5x Ø380	2.000	ST		BROWN
X	55	6.371-184.0	Diamond pad violet set 5x Ø310	2.000	ST		VIOLET
X	55	6.371-183.0	Diamond pad brown set 5x Ø310	2.000	ST		BROWN
X	55	6.371-181.0	Diamond pad brown set 5x Ø280	2.000	ST		BROWN
X	55	6.371-182.0	Diamond pad violet set 5x Ø280	2.000	ST		VIOLET

20 Power brush BD (0.147-443.0)

ET/VT (spare/wear parts)	Pos	Material #	Name	Qty.	Unit	var. information	Footnote text
X	55	6.371-239.0	Diamond pad green set 5x Ø457	2.000	ST		GREEN
X	55	6.371-188.0	Diamond pad violet set 5x Ø380	2.000	ST		VIOLET
X	55	6.371-234.0	Diamond pad green set 5x Ø306	2.000	ST		GREEN
X	55	6.371-235.0	Diamond pad green set 5x Ø356	2.000	ST		GREEN
X	55	6.371-233.0	Diamond pad green set 5x Ø280	2.000	ST		GREEN
X	55	6.371-193.0	Diamond pad brown set 5x Ø460	2.000	ST		BROWN
X	55	6.371-236.0	Diamond pad green set 5x Ø385	2.000	ST		GREEN
X	55	6.371-194.0	Diamond pad violet set 5x Ø460	2.000	ST		VIOLET
	56	7.303-096.0	Screw 4x22 -ST-10.9-R2R (IN6RD)	3.000	ST		
X-X	57	4.481-262.0	Holder pivot point complete BD	1.000	ST	L = 406mm	