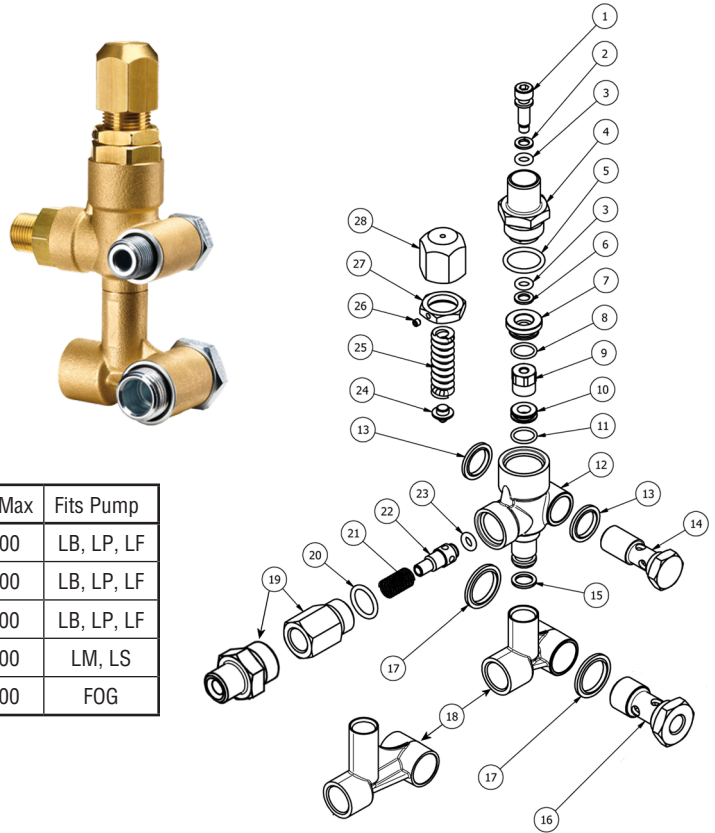


VBT UNLOADER VALVE EXPLODED VIEW AND PARTS LIST

A trapped pressure direct mount unloader valve.

SPECIFICATIONS

Maximum Volume	6.6 GPM
Maximum Discharge Pressure	1000-4000 PSI
Maximum Temperature	195°F
Port Size	Inlet 1/2" FPT Outlet 3/8" FPT or MPT
Dimensions	87mm x 52mm x 155mm
Weight	1.95 lb.
Material	Brass, Stainless, Buna-N



Part No	Description	Inlet	Outlet	PSI Max	Fits Pump
8.754-696.0	Unloader, VBT Direct Mount	1/2" FPT	3/8" MPT	3000	LB, LP, LF
8.754-700.0	Unloader, VBT Direct Mount	1/2" FPT	3/8" MPT	4000	LB, LP, LF
8.754-701.0	Unloader, VBT Direct Mount	1/2" FPT	3/8" FPT	4000	LB, LP, LF
8.754-702.0	Unloader, VBT Direct Mount	1/2" FPT	3/8" FPT	4000	LM, LS
8.754-703.0	Unloader, VBT Direct Mount	3/8" FPT	3/8" MPT	1500	FOG

ITEM	PART NO.	DESCRIPTION	QTY
1*	8.754-929.0	Stem	1
2*	9.803-912.0	Backup Ring	1
3*	8.754-930.0	O-ring, Ø2.62 x 6.02	2
4	8.730-882.0	Stem Connector (696.0, 703.0)	1
	9.803-911.0	Stem Connector (700.0, 701.0, 702.0)	1
5*	9.803-193.0	O-ring, Ø2.62 x 20.24	1
6*	9.803-908.0	Backup Ring	1
7	9.803-907.0	Guide Bushing	1
8*	9.803-906.0	O-ring, Ø1.78 x 14	1
9*	8.754-959.0	Ball SubAssembly (696.0, 703.0)	1
	8.754-932.0	Ball Subassembly (700.0, 701.0, 702.0)	1
10*	8.754-933.0	Seat	1
11*	8.754-934.0	O-ring, Ø1.78 x 12.42	1
12	8.754-935.0	Valve Body	1
13	9.802-893.0	Seal Washer 3/8	1
14	9.803-919.0	Banjo Bolt 3/8	1
15*	8.754-936.0	O-ring, Ø2.62 x 10.78	1
16	9.803-920.0	Banjo Bolt, 1/2, w/1/4" Port	1
	8.754-960.0	Banjo Bolt, 3/8 w/1/4" Port (703.0)	1

ITEM	PART NO.	DESCRIPTION	QTY
17	9.803-921.0	Seal Washer 1/2 (696.0, 700.0, 701.0, 702.0)	1
	9.802-893.0	Seal Washer, 3/8 (703.0)	1
18	8.754-937.0	Bypass Manifold (696.0, 700.0, 702.0)	1
	8.754-938.0	Bypass Manifold (701.0)	1
	8.754-958.0	Bypass Manifold (703.0)	1
19	9.802-892.0	Outlet Connector 3/8 MPT (696.0, 700.0, 703.0)	1
	9.803-914.0	Outlet Connector 3/8 FPT (701.0, 702.0)	1
20*	9.803-191.0	O-ring, Ø2.62 X 17.13	1
21*	8.933-017.0	Poppet Spring	1
22*	8.754-939.0	Poppet	1
23*	8.754-940.0	O-ring, Ø3 x 6	1
24*	8.754-961.0	Plate (696.0, 703.0)	1
	9.803-922.0	Plate (700.0, 701.0, 702.0)	1
25*	8.730-870.0	Spring 1500-3000 PSI (700.0, 701.0 702.0)	1
	8.933-018.0	Spring 1500-4000 PSI (696.0, 703.0)	1
26	8.933-021.0	Set Screw	1
27	9.803-925.0	Nut	1
28	9.803-926.0	Knob, Brass, Unloader	1

* Included in Kit

REPAIR KITS

KIT NUMBERS	8.754-941.0	8.754-954.0	8.754-942.0	8.754-955.0	8.754-957.0	8.750-019.0	8.754-956.0
DESCRIPTION	O-Ring Repair Kit	O-Ring Repair Kit	Outlet Repair Kit	Outlet Repair Kit	Stem Repair Kit	Stem Repair Kit	Stem Repair Kit
ITEM NUMBERS INCLUDED	2, 3, 5, 6, 8, 11, 15, 20, 23	2, 3, 5, 6, 8, 11, 15, 20, 23	20, 21, 22, 23	20, 21, 22, 23	1, 9, 10, 11, 24, 25	1, 9, 10, 11, 24, 25	1, 9, 10, 11, 24, 25
Fits Unloader	696.0, 700.0, 701.0, 702.0	703.0	696.0, 700.0, 701.0, 702.0	703.0	696.0	700.0, 701.0, 702.0	703.0