

KÄRCHER® *KP1 Pump Series*

FEATURES

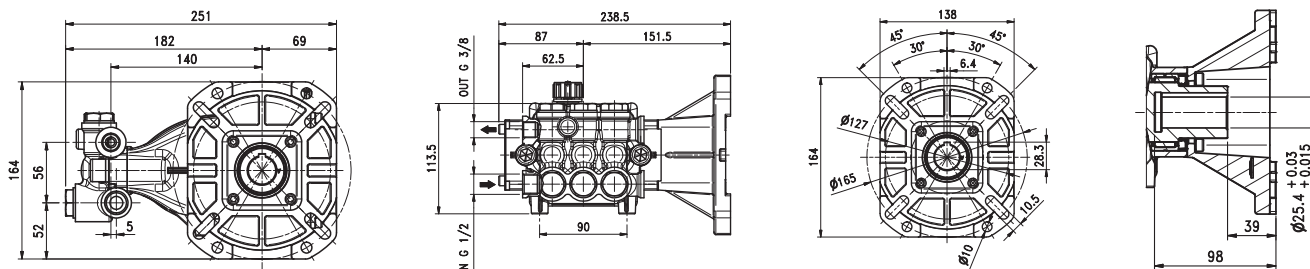
- Designed and engineered exclusively for Kärcher pressure washers.
- Seven year limited warranty.
- NEW** • Forged brass manifold with FEA computer enhanced design to increase strength in critical areas.
- NEW** • Die cast aluminum crackcase with extended piston rod guides for long seal life.
- NEW** • Die cast aluminum connecting rods with extended length and size.
- NEW** • Mirror finish ceramic plungers with increased thickness to resist thermal shock and corrosion.
- Industrial duty ball bearings.
- Stainless steel inlet and discharge valve assemblies.
- Forged valve caps with recessed O-rings to withstand leakage at high pressures.
- Dacromet® coated manifold bolts for extra corrosion resistance.
- U-Seal packing assembly for long life and temperature resistance.
- Flanged for direct coupling to a gasoline engine with 1" shaft (SAE J609)



SPECIFICATIONS

PUMP MODEL	KP3035G1	KP3535G1	KP4035G1
Part Number	8.923-787.0	8.923-788.0	8.923-789.0
Maximum Volume (GPM)	3	3.5	4
Max. Discharge Pressure (PSI)	3500		
Maximum Pump Speed	3400		
Maximum Inlet Pressure	125 PSI		
Maximum Inlet Vacuum	Flooded		
Bore	14 mm		
Stroke	9.2 mm	10.8 mm	11.6 mm
Crankcase Oil Capacity	13.5 oz		
Maximum Fluid Temperature	185° F		
Inlet Port Thread	1/2 - 14 BSPP-F		
Discharge Port Thread	3/8-19 BSPP-F		
Shaft Diameter x Shaft Length	1" Hollow		
Weight	18 lbs		
Dimensions (L x W x H)	9.88 x 9.39 x 6.46 in.		

DIMENSIONS

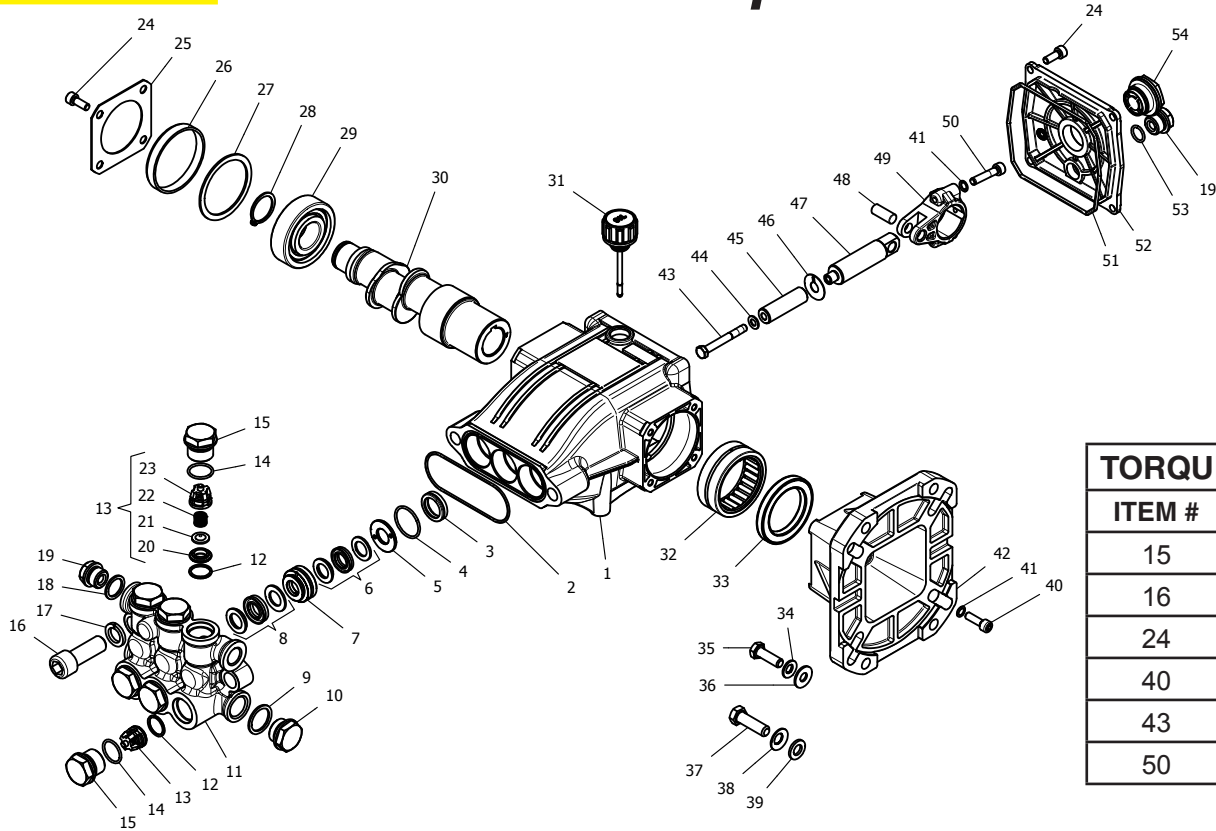


KÄRCHER • USA

Phone: 1-888-805-9852 or visit our web page at www.karcher.com

9.803-426.0 • Rev. 2/17

KÄRCHER® KP1 Series Pump



TORQUE SPECS	
ITEM #	FT. LBS.
15	65
16	66
24	8
40	10
43	10
50	10

PARTS LIST

ITEM	PART NO.	DESCRIPTION	QTY	ITEM	PART NO.	DESCRIPTION	QTY	ITEM	PART NO.	DESCRIPTION	QTY
1	8.754-841.0	Crankcase	1	19	8.707-262.0	Plug, Brass G3/8	2	37	9.803-244.0	Screw	4
2	8.754-846.0	O-ring Ø1.78 X 72.75	1	20*	See Kits Below	Valve Seat	6	38	9.803-217.0	Washer	4
3*	See Kits Below	Plunger Oil Seal	3	21*	See Kits Below	Valve Plate	6	39	9.803-216.0	Washer	4
4*	See Kits Below	O-ring Ø1.78 X 26.7	3	22*	See Kits Below	Valve Spring	6	40	8.752-824.0	Screw, M6 x 20	4
5*	See Kits Below	Washer, Pressure Ring 14 mm	3	23*	See Kits Below	Valve Cage	6	41	9.803-218.0	Washer, 6 mm	10
6*	See Kits Below	U-Seal, 14 mm	3	24	9.802-939.0	Screw, M6 X 16	8	42	8.754-864.0	Flange, Engine	1
7*	See Kits Below	Pressure Ring, 14 mm	3	25	8.717-137.0	Bearing Cover	2	43*	8.754-855.0	Bolt, Plunger	3
8*	See Kits Below	U-Seal, 14 mm	3	26	9.803-954.0	Bearing Seal	1	44*	8.754-092.0	Spacer, Copper	3
9	9.803-199.0	Washer, Copper G1/2	1	27	8.754-843.0	Seal Spacer, Crankshaft	1	45*	8.754-849.0	Plunger, 14 mm	3
10	9.802-926.0	Plug, Brass G1/2	1	28	9.802-914.0	Snap Ring, 25 mm	1	46*	9.803-962.0	Spacer, Copper	3
11	8.754-853.0	Manifold	1	29	9.803-955.0	Bearing, Ball	1	47	8.754-827.0	Plunger Rod	3
12*	8.717-233.0	O-ring Ø1.78 X 15.6	6	30	8.754-828.0	Shaft, 1" Hollow 3035G1	1	48	9.803-965.0	Connecting Rod Pin	3
13*	See Kits Below	Valve Assembly	6		8.754-832.0	Shaft, 1" Hollow 3535G1	1	49	9.803-966.0	Connecting Rod	3
14*	9.803-948.0	O-ring Ø1.78 X 18.77	6		8.754-833.0	Shaft, 1" Hollow 4035G1	1	50	8.933-020.0	Screw, Connecting Rod	6
15	9.803-949.0	Valve Plug	6	31	8.754-219.0	Oil Dipstick	1	51	8.754-847.0	O-ring Ø2.62 X 111.62	1
16	8.754-854.0	Bolt, Manifold M14 x 40	2	32	8.754-840.0	Bearing Needle	1	52	8.754-842.0	Cover, Crankcase	1
17	8.754-850.0	Washer, Lock	2	33	8.754-826.0	Seal, Crankshaft	1	53	9.803-906.0	O-ring Ø1.78 X 14	1
18	9.803-198.0	Washer, Copper G3/8	1	34	9.802-889.0	Washer	4	54	9.803-202.0	Sight Glass, G3/4	1
				35	9.803-243.0	Screw	4				
				36	9.803-215.0	Washer 6 mm	4				

* Available in kit (See below)

REPAIR KITS

KIT NUMBERS	8.754-860.0	8.754-861.0	8.754-862.0	8.754-859.0	9.803-937.0
KIT DESCRIPTION	Plunger Seals 14 mm	Seal Packing 14 mm	Plunger 14 mm	Complete Valve	Plunger Oil Seals
ITEM NUMBERS INCLUDED	4, 6, 8	4, 5, 6, 7, 8	43, 44, 45, 46	12, 13, 14	3
NUMBER OF CYLINDERS KIT WILL SERVICE	3	1	1	6	3