

EX3S

ORDER #85506

3 Gallon Carpet Spotter Machine

FEATURES

- 3 Gallon Solution Capacity
- 2.5 Gallon Recovery Capacity
- Built In Transport Handle
- 15' Power Cord
- Float Shut Off
- Easy To Clean Recovery Tank
- 10' Vacuum & Solution Hose, 3" Hand Tool Included

The Betco Carpet Spotter Machine is designed for quick spot removal. It's lightweight compact design and built in transport handle make it easy to go from job to job. A 30 psi pump delicately flushes out spots and spills. Included with the unit is a 3" hand tool and 10' of Vacuum & solution hose.

WARRANTY

Tank: 10 Year

Other components: 3 Year*

*Please refer to Betco Equipment Price/Product Guide for complete equipment warranty information.



SPECIFICATIONS

- Vacuum Motor: Bypass 2 Stage
- Pump: 30 psi
- Amp Draw: 11 amps
- Volts: 115 AC
- Waterlift: 80"
- Power Cord: 30' 14/3 Gauge
- Weight: 25 Lbs.

APPLICATIONS

- Residential/Commercial Spot Extraction
- Hard To Reach Places Such As Stairs, etc...
- Upholstery Cleaning

OPTIONS

10' Stainless Steel Wand #85524



CLICK TO ORDER PARTS

shop.monsterjanitorial.com

Better Solutions Come From...



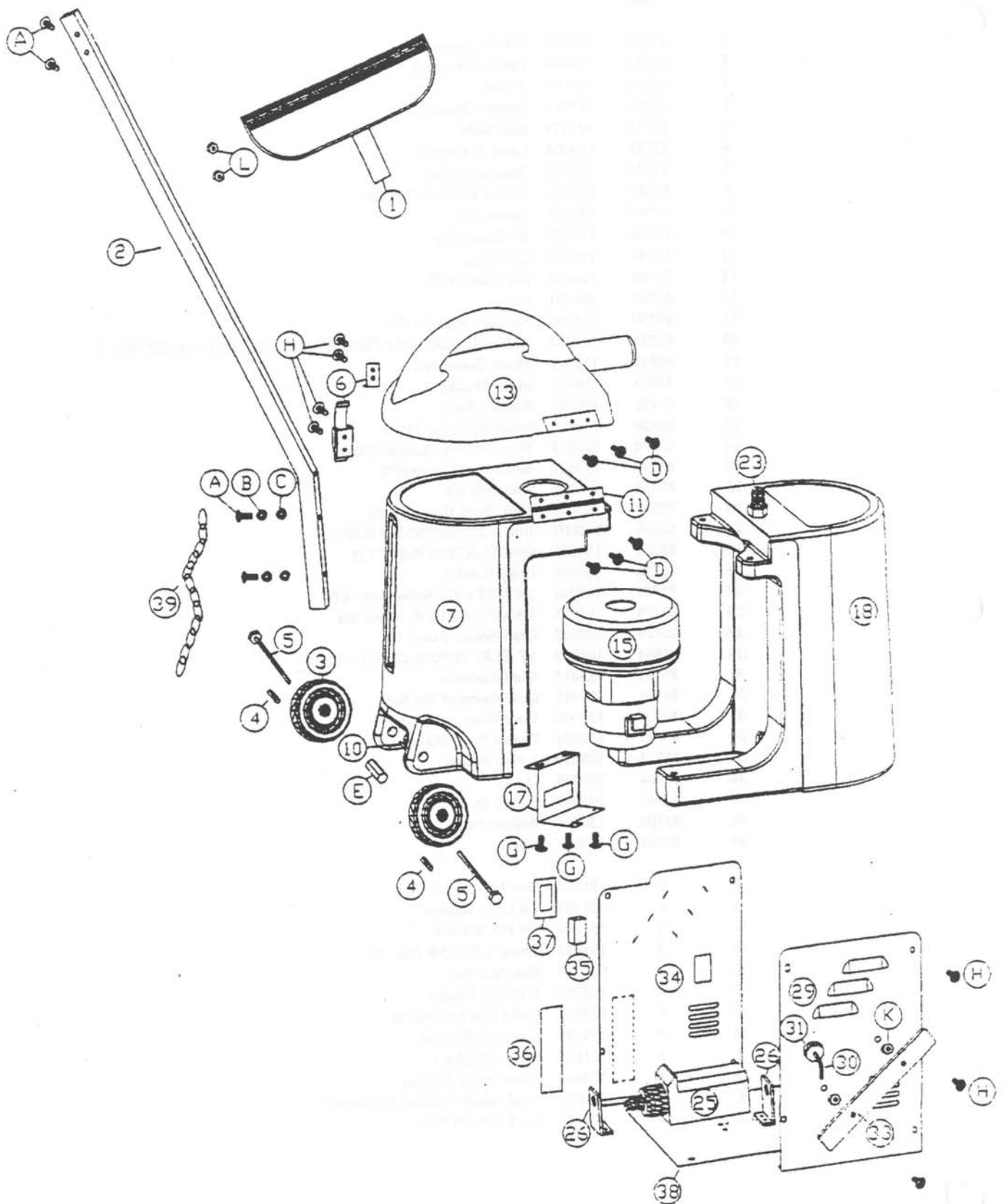
1001 Brown Avenue • P.O. Box 3127 • Toledo, Ohio 43607-0127

©All Rights Reserved 6/98 • Reorder #85506

Betco EX3S Spotter Machine Parts List

#85506

Item	Betco Part#	Description
1	85738	130608 Handle Assembly
2	85739	130604 Handle Extension
3	85740	123004 Wheel
4	85741	123065 Spanner Bushing
5	85742	101175 Axle Bolts
6	85743	113004 Latch & Keeper
7	85744	106502 Recovery Tank
8	85633	114033 FOAM FILTER (RSH24)
9	85745	130094 Screen N/S
10	85746	114052 3/4 Drain Plug
11	85747	130606 Lid Hinge
12	85748	114053 Lid Gasket N/S
13	85749	106501 Lid
14	85750	321000 Flapper Assembly N/S
15	85541	104008 2 STAGE PERF. DISCHARGE VAC MOTOR 115 & 230 VOLT
16	85545	112017 Motor Gasket N/S
17	85751	130602 Motor Bracket
18	85752	106503 Solution Tank
19	85636	114024 Solution Strainer N/S
20	85734	115017 1/4 x 1/4 Male Adapter N/S
21	85730	113012 Small Hose Clamp N/S
22	85753	105015 Hose N/S 1/4
23	85754	115002 Male Quick Connect (48)
24	85755	115007 1/4B x 1/8 MPT 90 deg B N/S
25	85553	117008 OSCILLATING PUMP 115
26	85756	117009 Pump Bracket
27	85757	115004 1/8 MPT x 1/4 Nylon Barb N/S
28	85758	115005 1/8 MPT x 1/4B 90 Nylon N/s
29	85759	130803 Cord Access Panel
30	85564	103040 15' ELECTRICAL CORD - 18/3
31	85760	123017 Cord Restraint
32	85761	123019 Cord Restraint Nut N/S
33	85762	130060 Cord Wrap
34	85763	130801 Switch Pump Plate
35	85571	103039 3 Way Switch
36	85764	107008 Decal
37	85765	107009 Switch Decal
38	85766	130804 Bottom Plate
39	85767	130807 Chain
A	#	101005 Bolt 1/4 - 20 x 1 1/4
B	#	101103 1/4 Lock Washer
C	#	101107 1/4 Flat Washer
D	#	101036 Screw 8-32 x 3/8 PHL PA
E	#	101176 Coupling Nut
F	#	101109 5/16 Flat Washer
G	#	101049 Bolt #10 x 3/4 Hex Hd
H	#	101173 Screw 10-32 x 1/4
I	#	101055 Screw 10-32 x 1
J	#	101046 Screw Pump Bracket
K	#	106007 Cord Handle Spacers Schedule80
L	#	101080 Lock Nut 1/4 N/S



Betco Equipment Division

OPERATING INSTRUCTIONS FOR EX 3 SPOTTER

1. Filling the EX 3 Spotter:
 - A. Add water and chemicals to the solution tank in the front of the machine.
2. Operating the EX 3 Spotter:
 - A. Attach the solution feed line to the quick disconnect at the top of the machine.
 - B. Attach the vacuum hose to the vacuum inlet on the recovery tank lid.
 - C. Turn the 3-way switch to use either the pump and vacuum or the vacuum alone. (Allow approximately 30 seconds for the pump to prime.)
 - D. Use the hand tool to spray and recover the solution.
 - E. When the vacuum motor sound changes or the vacuum suction stops, turn off the machine and empty the recovery tank.
3. Cleaning the Recovery Tank:
 - A. To drain the tank, remove the plug at the back of the machine and tilt on wheels with the handle.
 - B. Make sure the foam filter at the top of the recovery tank is clean and dry.
4. Basic Troubleshooting:
 - A. If the pump does not prime, depress the lever on the hand tool to release the air lock, or "power prime" the pump by detaching the vacuum hose from the hand tool and using the vacuum to draw suction through the solution jet while depressing the lever on the hand tool.
 - B. If solution flow is reduced or spray is weak:
 1. Check for low solution level in the solution tank.
 2. Check the screen on the hose in the solution tank for blockage.
 3. Check the spray jet from the hand tool for blockage.
 - C. If suction is low:
 1. Check the recovery tank to see if it is full.
 2. Check the foam filter at the top of the recovery tank for debris.
 3. Check for blockage in the hand tool or the hose.