



SPARE PART LIST

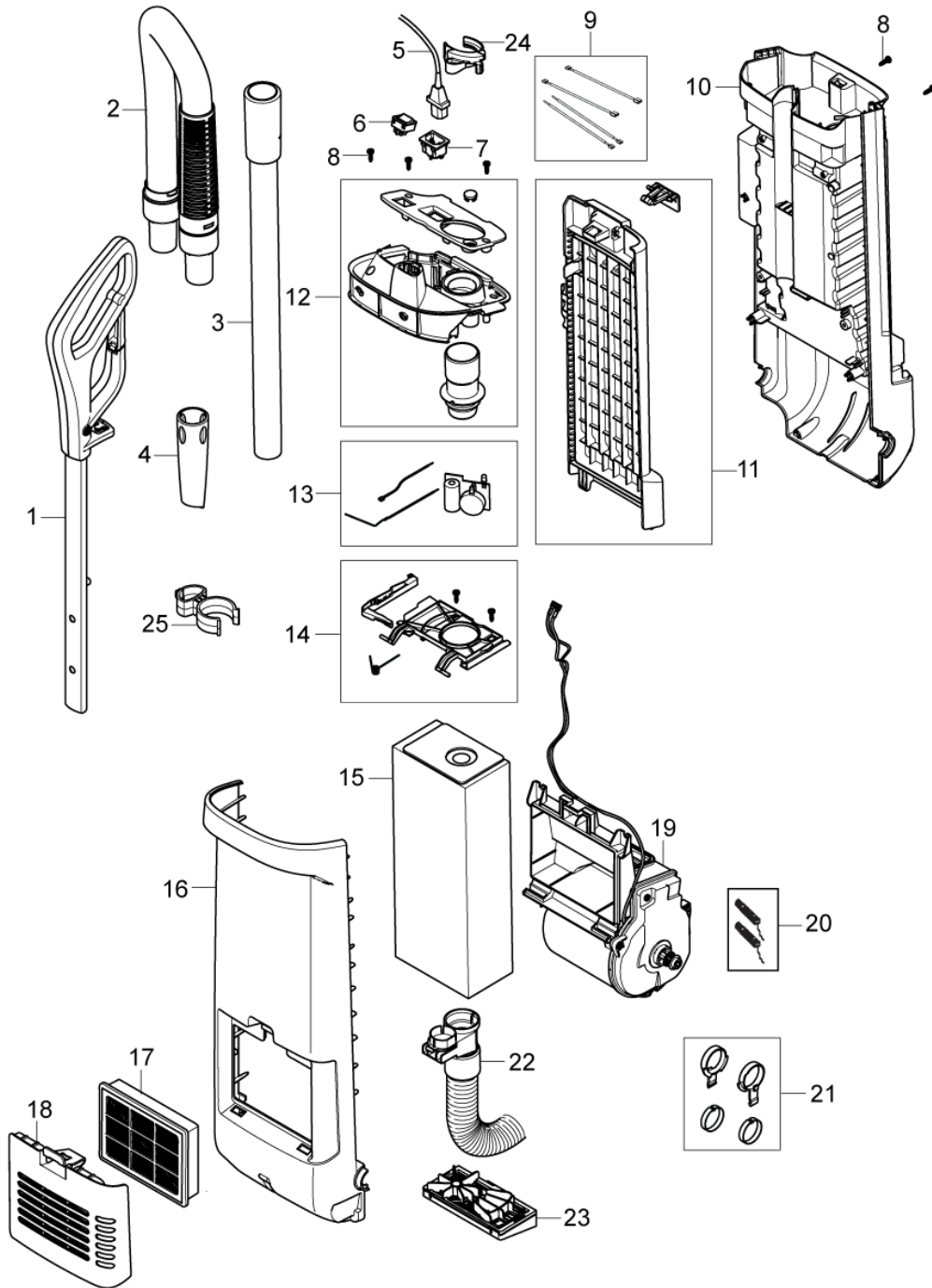
VU500 12 INCH SMU US

VU500 15 INCH SMU US

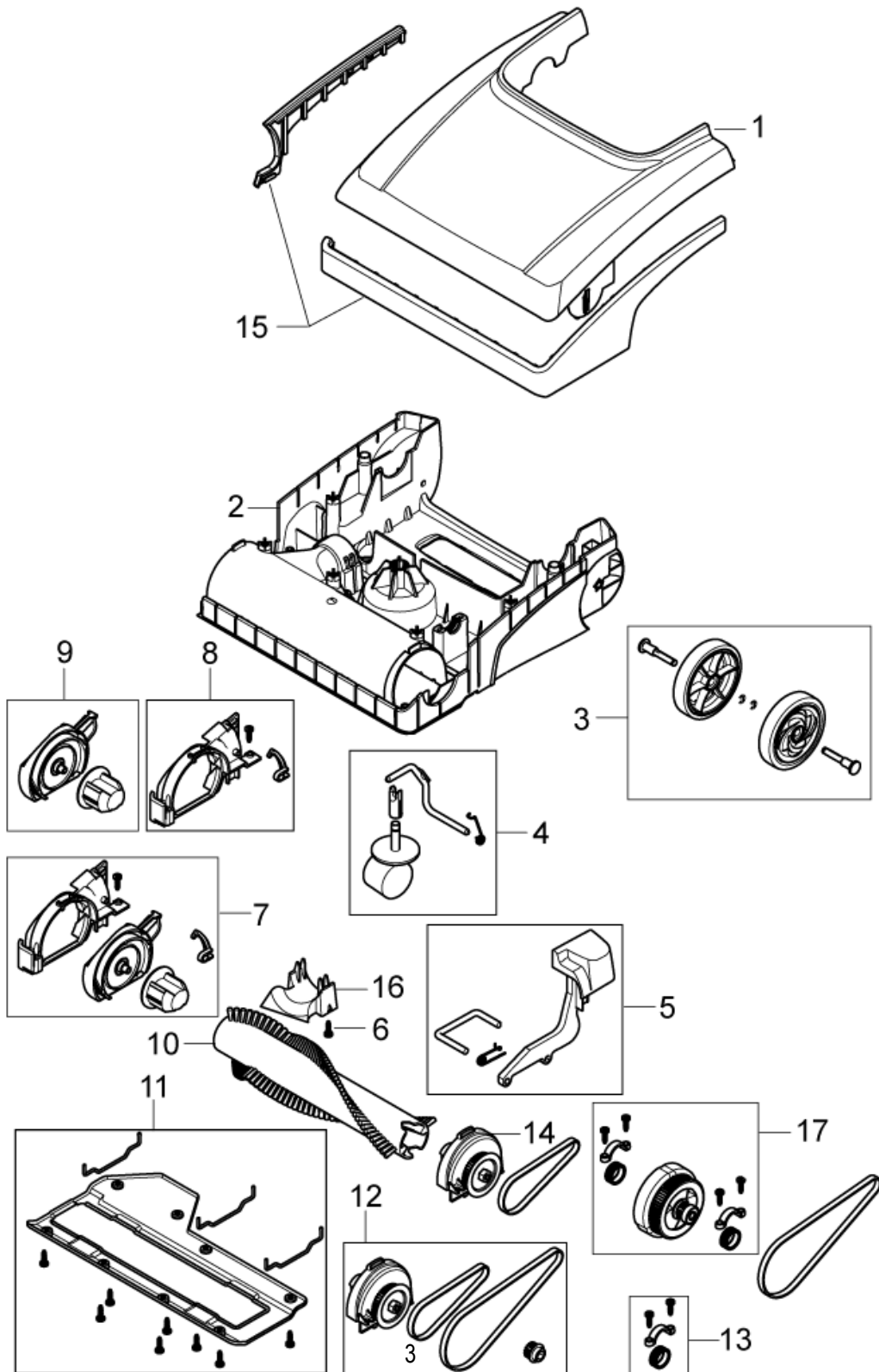
”

TABLE OF CONTENTS

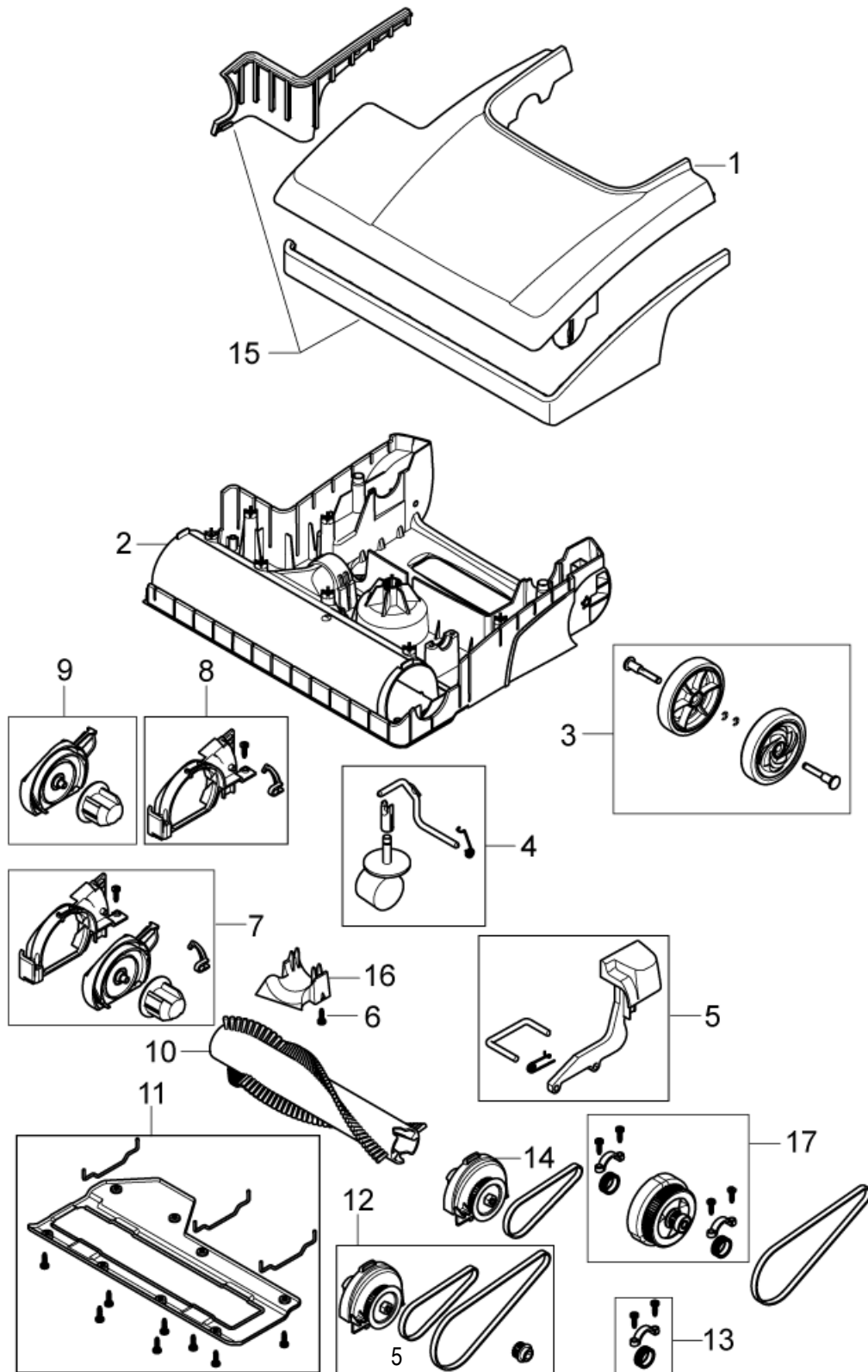
Body 1
Base 12" 3
Base 15" 5



No.	Part No.	Qty.	Description	Part Note
1	107407581	1	HANDLE CPL	
2	147 0950 500	1	HOSE STRETCHABLE	
3	147 0851 500	1	EXTENSION TUBE 35MM	
4	147 1203 500	1	CREVICE NOZZLE D32	
5	107407582	1	DATACHABLE CORD SET	
5	107407713	1	DETACHABLE CORD 50FT	
6	140 5496 510	1	SWITCH UL KIT	
7	107407583	1	APPLIANCE INLET	
8	140 9214 040	1	SCREW PTK TORX 40X14 MM FZB	
9	107407590	1	WIRE SET	
10	107407584	1	BODY COVER REAR	
11	107407585	1	LID CPL.	
12	107407586	1	COVER TOP CPL	
13	147 0987 500	1	BAG FULL DEVICE	
14	147 0854 500	1	HOLDER DUST BAG KIT	
15	107413586	1	DUST BAG 10PCS FOR VU500	
16	107407588	1	COVER BODY FRONT	
17	147 1250 600	1	HEPA FILTER	
18	107407589	1	COVER EXHAUST FILTER	
19	147 0864 510	1	MOTOR CASSETTE 110-120V	
20	147 1326 500	1	CARBON BRUSH KIT	
21	147 0927 500	1	JOINT BASE TO BODY W RING	
22	147 0919 500	1	ADAPTER BASE TO TUBE W.HOSE	
23	147 0958 500	1	HOLDER PRE FILTER KIT	
24	107407717	1	TUBE HOLDER	
25	107407699	1	ACCESSORY HOLDER	



No.	Part No.	Qty.	Description	Part Note
1	107407569	1	COVER BASE	
2	107407571	1	CHASSIS 12INCH	
3	107416451	1	WHEEL SHAFT KIT	
4	107407573	1	CASTOR KIT	
5	107407574	1	PEDAL WITH SHAFT AND SPRING	
6	140 9214 040	1	SCREW PTK TORX 40X14 MM FZB	
7	107407575	1	BRUSH COVER AND FRAME CPL	
8	107407576	1	BRUSH FRAME WITH CLIP	
9	107407577	1	BRUSH COVER WITH BEARING	
10	107407697	1	BRUSH 12INCH RED	
11	107407578	1	BRUSH SHOE 12INCH 305	
12	107407698	1	BLOCK W. BELT AND DRIVE PULLEY	
13	107407580	1	CLAMP AND GASKET KIT	
14	147 0913 500	1	END CAP BRUSCH LEFT W BEARING	
15	107407718	1	BUMPER 12INCH	
16	107407723	1	LOWER HOSE CLAMP	
17	107407722	1	END CAP BRUSH LEFT W BEARING	



No.	Part No.	Qty.	Description	Part Note
1	107407570	1	COVER CPL.15INCH	
2	107407572	1	CHASSIS 15INCH	
3	107416451	1	WHEEL SHAFT KIT	
4	107407573	1	CASTOR KIT	
5	107407574	1	PEDAL WITH SHAFT AND SPRING	
6	140 9214 040	1	SCREW PTK TORX 40X14 MM FZB	
7	107407575	1	BRUSH COVER AND FRAME CPL	
8	107407576	1	BRUSH FRAME WITH CLIP	
9	107407577	1	BRUSH COVER WITH BEARING	
10	107408004	1	BRUSH 15INCH 68MM	
11	107407579	1	BRUSH SHOE 15INCH	
12	107407698	1	BLOCK W. BELT AND DRIVE PULLEY	
13	107407580	1	CLAMP AND GASKET KIT	
14	147 0913 500	1	END CAP BRUSCH LEFT W BEARING	
15	107407719	1	BUMPER RIGHT 15INCH	
16	107407723	1	LOWER HOSE CLAMP	
17	107407722	1	END CAP BRUSH LEFT W BEARING	

USA
Nilfisk-Advance Inc.
14600 21st Avenue North
Plymouth, MN 55447-3408
Tel.: (763) 745 3500
Fax : (763) 745 3718

Canada
Nilfisk-Advance Canada
240 Superior Boulevard Mississauga,
ON L5T 2L2
Tel.: 905-564-1149
Fax: 905-564-1030



Advance

www.advance-us.com